

WORKPLACE GALLERY

JENNIFER DOUGLAS

Jennifer Douglas

23 November – 21 December 2019

Wednesday - Saturday, 12 - 5pm

WORKPLACE

First Floor, The Old Posthouse

Gateshead, UK

Workplace is pleased to present a new body of paintings by Jennifer Douglas in the first-floor gallery at The Old Posthouse, Gateshead.

Jennifer Douglas uses proletarian materials such as industrial floor paint, layered with elemental materials creating serene monochromatic canvases which she then works on 'blind' - repeatedly puncturing and scratching the surface to create works that are both violent and painterly. The works shown here at WORKPLACE employ precious metals such as silver and copper. These are materials that signify currency, assets, wealth, and aspiration, but also the inverse: the loose change in one's pocket, shrapnel, coppers, 10p for cup of tea mate, 50p for the bus fare home. Left to tarnish and change these paintings are unstable and permanently in flux as they slowly discolour.

Through their reductive, minimal aesthetic and their entropic materiality these works allude to the romantic sublime yet they also take on more human associations. Left wrapped in plastic for a year before exhibiting one of the paintings has begun to turn both the golden hue of a corn-field sunset and the straw yellow of a fading bruise. Through these works there is a growing association with the moribund. Pink acrylic over silver leaf has dispersed and coagulated like oil on water, creating a bright rash-like bloom across a surface. Burnished silver welts up like a faded scar. Douglas's punctures and scratches begin to allude as much to the pitted, agonised flesh depicted by Matthias Grunewald as to the spatial concepts of Lucio Fontana.

For full details and larger images, please see the end of this document.



Jennifer Douglas

Super Entropy, 2019

Floor paint and silver leaf on canvas (punctured and scratched)

100 x 80 cm

39 3/8 x 31 1/2 in

(JD0223)

[View detail](#)



Jennifer Douglas

[View detail](#)

Entropic Cosmos (Silver I), 2019

Floor paint and silver leaf on canvas (punctured and scratched)

50 x 40 cm

19 3/4 x 15 3/4 in

(JD0217)



Jennifer Douglas

[View detail](#)

Under the Line, 2019

Industrial floor paint, tarnished silver leaf, varnish (pierced and scratched)

50 x 40 cm

(JD0225)



Jennifer Douglas

[View detail](#)

Entropic Paradise, 2018

Silver leaf, industrial floor paint on linen, punctured and scratched

150 x 120 cm

59 1/8 x 47 1/4 in

(JD0200)



Jennifer Douglas

[View detail](#)

Super Flux, 2019

Floor paint, copper leaf and graphite on canvas (punctured and scratched)

100 x 80 cm

39 3/8 x 31 1/2 in

(JD0222)



Jennifer Douglas

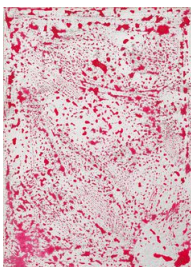
[View detail](#)

Burn, 2019

Industrial floor paint, silver leaf, acrylic and household paint on canvas (pierced and scratched)

30 x 21 cm

(JD0224)



Jennifer Douglas

[View detail](#)

Bloom, 2019

Industrial floor paint, silver leaf, acrylic paint on canvas (scratched)

30 x 21 cm

(JD0226)



Jennifer Douglas

Silver Nova II, 2019

Floor paint and silver leaf on canvas (punctured and scratched)

70 x 60 cm

27 1/2 x 23 5/8 in

(JD0221)

[View detail](#)

JENNIFER DOUGLAS
Super Entropy, 2019



Floor paint and silver leaf on canvas (punctured and scratched)
100 x 80 cm
39 3/8 x 31 1/2 in
(JD0223)

Image 1/2

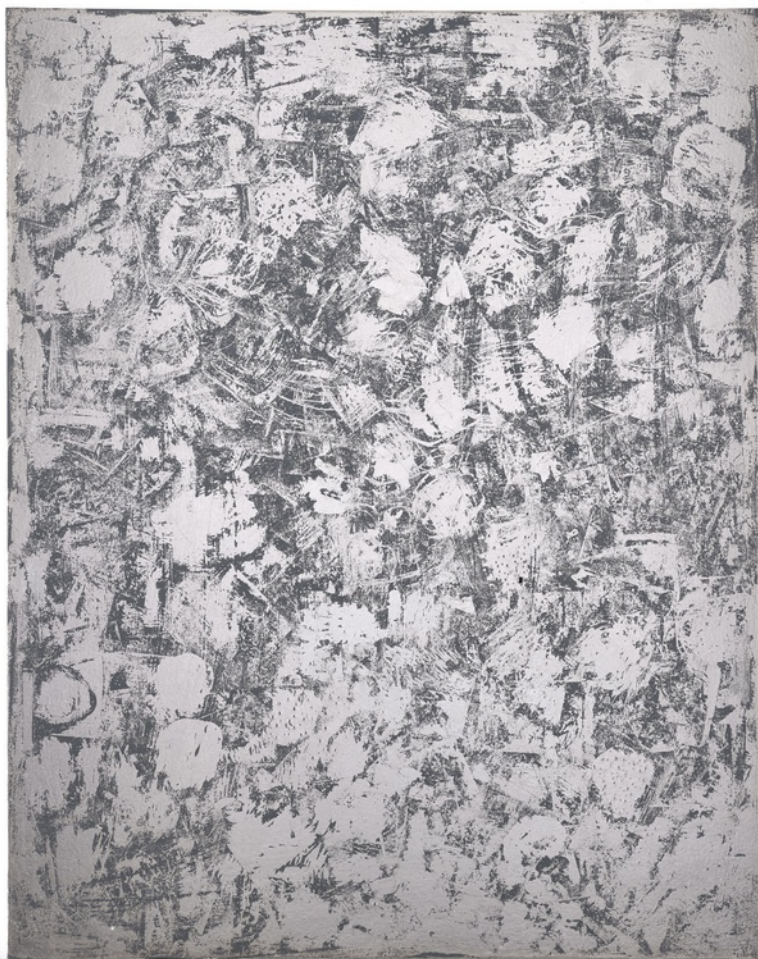


Image 2/2

JENNIFER DOUGLAS
Entropic Cosmos (Silver I), 2019



Floor paint and silver leaf on canvas (punctured and scratched)
50 x 40 cm
19 3/4 x 15 3/4 in
(JD0217)

Image 1/2



Image 2/2

JENNIFER DOUGLAS
Under the Line, 2019



Industrial floor paint, tarnished silver leaf, varnish (pierced and scratched)
50 x 40 cm
(JD0225)

Image 1/2



Image 2/2

JENNIFER DOUGLAS
Entropic Paradise, 2018



Silver leaf, industrial floor paint on linen, punctured and scratched
150 x 120 cm
59 1/8 x 47 1/4 in
(JD0200)

Image 1/4

Description

Jennifer Douglas brings together contrasting materials to create a serene and monochromatic painting that reference global economics and luxury, as well as the working environments of heavy and light industry. In this series of works Douglas draws influence from her research into industrial buildings in Northern England. Using proletarian materials such as factory floor paint as underpainting, she then covers the surface with silver leaf - a precious metal. Resisting an easy symbolism of wealth and power, Douglas allows natural chemical reactions to slowly destabilise

and tarnish the surface to create paintings that point back, earth-bound, to the elemental properties of materials and their entropic nature. Other works from this series have recently been acquired by The Government Art Collection, and Simmons and Simmons Art Collection.

Jennifer Douglas was born in 1975, in Amersham, Buckinghamshire, UK. She studied at Newcastle University and Glasgow School of Art. Recent exhibitions include Artissima, Turin, Italy; So, Workplace London; Confusion in her eyes says it all, Maria Stenfors, London; Laing Art Gallery, Newcastle, UK; Exit Strategy, Tramway, Glasgow, UK; The Short Score DLI Museum and Durham Art Gallery, UK; You Shall Know Our Velocity Baltic Centre for Contemporary Art, Gateshead, UK; ROTATE Contemporary Art Society, London; She was the winner of Salon Art Prize 2012, and Northern Futures 2010. Douglas lives and works in Gateshead, UK.



Image 2/4



Image 3/4



Image 4/4

JENNIFER DOUGLAS
Super Flux, 2019



Floor paint, copper leaf and graphite on canvas (punctured and scratched)
100 x 80 cm
39 3/8 x 31 1/2 in
(JD0222)

Image 1/2



Image 2/2

JENNIFER DOUGLAS
Burn, 2019



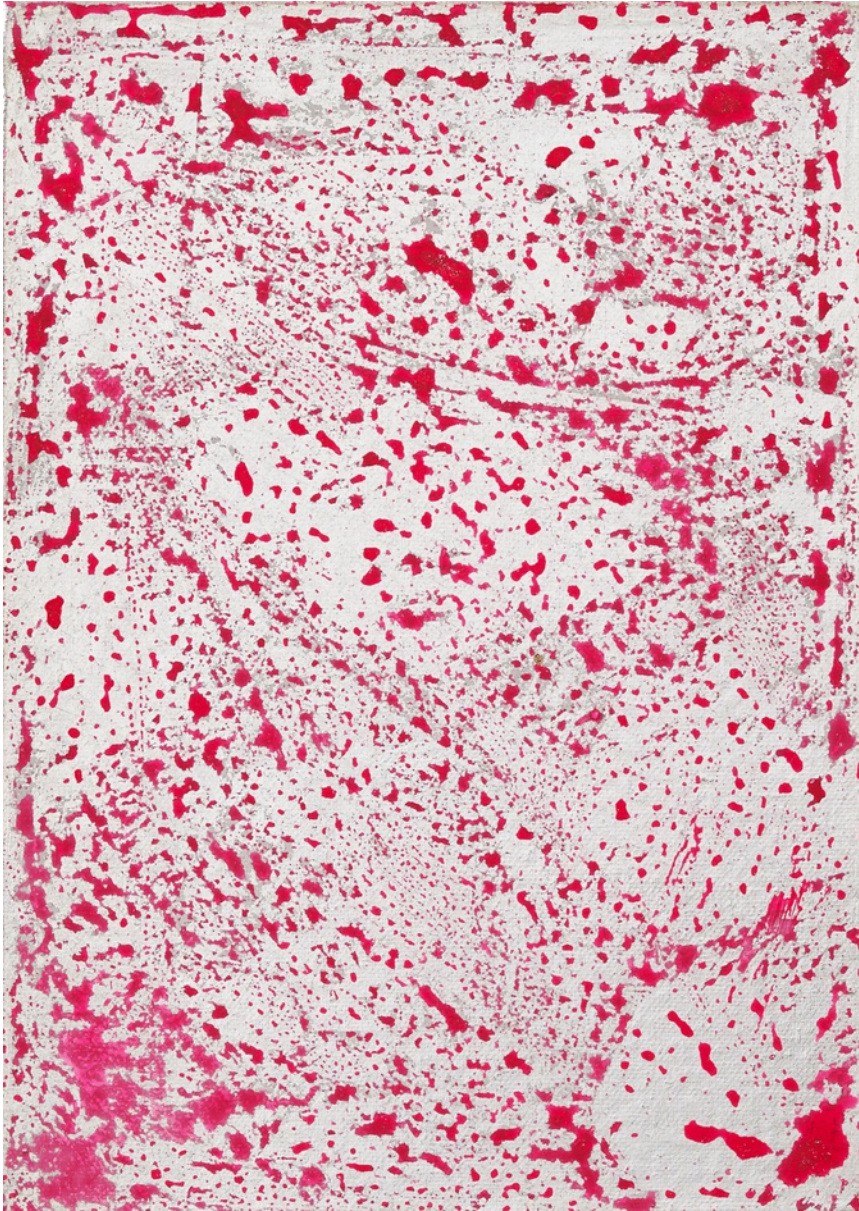
Industrial floor paint, silver leaf, acrylic and household paint on canvas (pierced and scratched)
30 x 21 cm
(JD0224)

Image 1/2



Image 2/2

JENNIFER DOUGLAS
Bloom, 2019



Industrial floor paint, silver leaf, acrylic paint on canvas (scratched)
30 x 21 cm
(JD0226)

Image 1/2



Image 2/2

JENNIFER DOUGLAS
Silver Nova II, 2019



Floor paint and silver leaf on canvas (punctured and scratched)
70 x 60 cm
27 1/2 x 23 5/8 in
(JD0221)

Image 1/2



Image 2/2

Jennifer Douglas was born in 1975 in Amersham, UK. She studied Fine Art at Newcastle University and completed her MFA at Glasgow School of Art in 2005. Exhibitions include Crab Walk, NGCA, Northern Gallery for Contemporary Art, Sunderland, UK; Confusion in her eyes that says it all, Maria Stenfors, London, UK; Tip of the Iceberg, Contemporary Art Society, London, UK; From Acanthus to Zebrawood Cooper Gallery, University of Dundee, UK; Beijing/Glasgow, Museum of the Central Academy of Fine Arts, Beijing; Exit Strategy, Tramway, Glasgow, UK; The Games we Play, Barcsay Sala, Budapest; VANE Export, Tensta Konsthall, Stockholm, Sweden; You Shall Know Our Velocity, Baltic Centre for Contemporary Art, Gateshead, UK. Jennifer Douglas lives and works in Gateshead, UK