

# WORKPLACE GALLERY

## 'ARTICLE' WORKPLACE FOUNDATION AT THE CONDUIT, LONDON

Cath Campbell  
Joe Clark  
Rachel Lancaster  
Paul Merrick  
Richard Rigg

(works in descending order)

For full details and larger images, please see the end of this document.



**Cath Campbell**

*Spa Suites, Caesars Palace, Las Vegas, 2012*

Collage on paper

20.7 x 14.3 cm

8 1/8 x 5 5/8 in

(CC0040)

[View detail](#)



**Cath Campbell**

*Suite 105, Art Hotel Corona D'oro, Bologna, 2012*

Collage on paper

20.7 x 14.3 cm

8 1/8 x 5 5/8 in

(CC0042)

[View detail](#)



**Rachel Lancaster**

*Li-lo, 2016*

oil on canvas

70 x 80cm

(RL0207)

[View detail](#)



**Joe Clark**

*Low Gravity*, 2012  
C-print, MDF, Poster  
84 x 59 cm  
33 1/8 x 23 1/4 in  
edition of 1 plus 1 artist's proofs  
(JCL0084)

[View detail](#)



**Cath Campbell**

*Untitled (Horse)*, 2014  
Ink on UV print on aluminium  
44 x 34 cm  
17 3/8 x 13 3/8 in  
(CC0083)

[View detail](#)



**Paul Merrick**

*Untitled (Cockerel)*, 2015  
Plasterboard, found image, pink grip and masking tape  
63 x 63 cm  
24 3/4 x 24 3/4 in  
(PME0198)

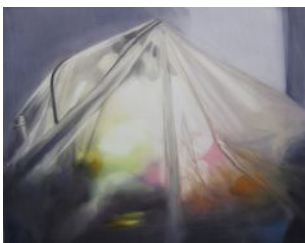
[View detail](#)



**Joe Clark**

*Sunset Sequence 2*, 2013  
C-type print on aluminium  
55 x 41.5 cm  
21 5/8 x 16 3/8 in  
edition of 1 plus 1 artist's proof  
(JCL0102)

[View detail](#)



**Rachel Lancaster**

*Untitled*, 2019  
oil on canvas  
80 x 100cm  
(RL0208)

[View detail](#)



**Cath Campbell**

*Suite 501, Hotel Gabelshus, Oslo*, 2012  
Collage on paper  
20.7 x 14.3 cm  
8 1/8 x 5 5/8 in  
(CC0036)

[View detail](#)



**Cath Campbell**

*Superior Room, Melrose Arch Hotel, Johannesburg, 2012*

Collage on paper

20.7 x 14.3 cm

8 1/8 x 5 5/8 in

(CC0038)

[View detail](#)



**Joe Clark**

*Sunset Sequence 1, 2013*

C-type print on aluminium

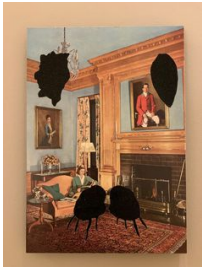
55 x 41.5 cm

21 5/8 x 16 3/8 in

edition of 1 plus 1 artist's proof

(JCL0101)

[View detail](#)



**Paul Merrick**

*In The Dance Of The Skeletons*

Found Image on Black Glossy Perspex

(PME0206)

[View detail](#)



**Paul Merrick**

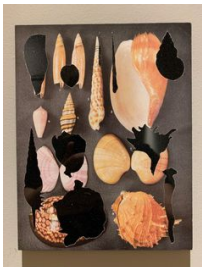
*In The Dance Of The Skeletons #12, 2019*

Found Image on Black Glossy Perspex

209mm x 163mm

(PME0210)

[View detail](#)



**Paul Merrick**

*In The Dance Of The Skeletons*

Found Image on Black Glossy Perspex

(PME0207)

[View detail](#)



**Paul Merrick**

*In The Dance Of The Skeletons #7, 2019*

Found Image on Copper

210mm x 165mm

(PME0203)

[View detail](#)



**Paul Merrick**  
*In The Dance Of The Skeletons #4*, 2019  
 Found Image on Copper  
 250mm x 164mm  
 (PME0209)

[View detail](#)



**Paul Merrick**  
*In The Dance Of The Skeletons*  
 Found Image on Copper  
 (PME0208)

[View detail](#)



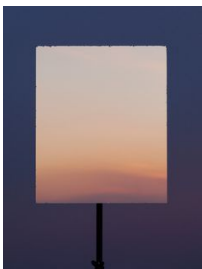
**Paul Merrick**  
*In The Dance Of The Skeletons #3*, 2019  
 Found Image on Copper  
 219mm x 166mm  
 (PME0201)

[View detail](#)



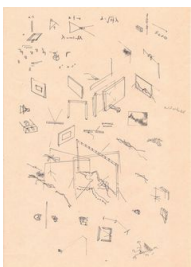
**Paul Merrick**  
*In The Dance Of The Skeletons #2*, 2019  
 Found Image on Copper  
 210mm x 164mm  
 (PME0200)

[View detail](#)



**Joe Clark**  
*Sunset Sequence 3*, 2013  
 C-type print on aluminium  
 55 x 41.5 cm  
 21 5/8 x 16 3/8 in  
 edition of 1 plus 1 artist's proof  
 (JCL0103)

[View detail](#)



**Richard Rigg**  
 Untitled, 2015  
 Ink on Paper  
 29.7 x 21 cm  
 11 3/4 x 8 1/4 in  
 (RR0077)

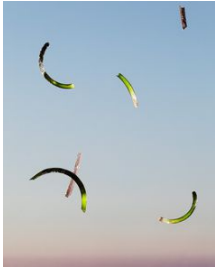
[View detail](#)





**Joe Clark**  
*Seagrass #3*, 2013  
 Giclée print mounted on aluminium  
 42.5 x 34 cm  
 16 3/4 x 13 3/8 in  
 edition of 1 plus 1 artist's proofs  
 (JCL0106)

[View detail](#)



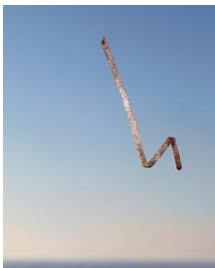
**Joe Clark**  
*Seagrass #7*, 2013  
 Giclée print mounted on aluminium  
 42.5 x 34 cm  
 16 3/4 x 13 3/8 in  
 edition of 1 plus 1 artist's proofs  
 (JCL0110)

[View detail](#)



**Joe Clark**  
*Seagrass #8*, 2013  
 Giclée print mounted on aluminium  
 42.5 x 34 cm  
 16 3/4 x 13 3/8 in  
 edition of 1 plus 1 artist's proofs  
 (JCL0111)

[View detail](#)



**Joe Clark**  
*Seagrass #6*, 2013  
 Giclée print mounted on aluminium  
 42.5 x 34 cm  
 16 3/4 x 13 3/8 in  
 edition of 1 plus 1 artist's proofs  
 (JCL0109)

[View detail](#)



**Joe Clark**  
*Seagrass #5*, 2013  
 Giclée print mounted on aluminium  
 42.5 x 34 cm  
 16 3/4 x 13 3/8 in  
 edition of 1 plus 1 artist's proofs  
 (JCL0108)

[View detail](#)



**Joe Clark**  
*Seagrass #4*, 2013  
 Giclée print mounted on aluminium  
 42.5 x 34 cm  
 16 3/4 x 13 3/8 in  
 edition of 1 plus 1 artist's proofs  
 (JCL0107)

[View detail](#)



**Rachel Lancaster**

*Hair*, 2019  
oil on canvas  
50 x 40cm  
(RL0211)

[View detail](#)



**Rachel Lancaster**

Untitled, 2018  
oil on canvas  
50 x 40cm  
(RL0213)

[View detail](#)



**Joe Clark**

*Transcode*, 2012  
C-print, MDF, walnut veneer  
40.5 x 34 cm  
16 x 13 3/8 in  
edition of 1 plus 1 artist's proofs  
(JCL0078)

[View detail](#)



**Joe Clark**

*flat\_final*, 2012  
C-print, MDF, walnut veneer  
40.5 x 34 cm  
16 x 13 3/8 in  
edition of 1 plus 1 artist's proofs  
(JCL0085)

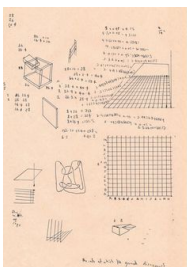
[View detail](#)



**Paul Merrick**

*In The Dance Of The Skeletons*, 2019  
Found Image on Aluminium  
(PME0205)

[View detail](#)



**Richard Rigg**

Untitled, 2015  
Ink on Paper  
29.7 x 21 cm  
11 3/4 x 8 1/4 in  
(RR0083)

[View detail](#)



**Rachel Lancaster**

Untitled, 2015  
Oil on canvas  
150 x 120 cm  
59 1/8 x 47 1/4 in  
(RL0193)

[View detail](#)



**Cath Campbell**

*Minimalist, Bo Bo, Buenos Aires, 2012*  
Collage on paper  
20.7 x 14.3 cm  
8 1/8 x 5 5/8 in  
(CC0041)

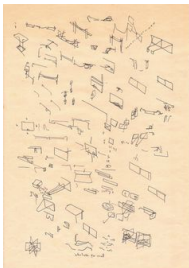
[View detail](#)



**Cath Campbell**

*Junior Suite, Grand Hotel Baglioni, Bologna, 2012*  
Collage on paper  
20.7 x 14.3 cm  
8 1/8 x 5 5/8 in  
(CC0043)

[View detail](#)



**Richard Rigg**

Untitled, 2015  
Ink on Paper  
29.7 x 21 cm  
11 3/4 x 8 1/4 in  
(RR0081)

[View detail](#)



**Paul Merrick**

*Untitled (Warrior), 2015*  
Plasterboard, mastic sealant, found image  
63 x 63 cm  
24 3/4 x 24 3/4 in  
(PME0194)

[View detail](#)



**Cath Campbell**

*The Hotel at Mandelay Bay, Las Vegas, 2012*  
Collage on paper  
20.7 x 14.3 cm  
8 1/8 x 5 5/8 in  
(CC0039)

[View detail](#)



**Cath Campbell**  
*The Skylofts, MGM, Las Vegas, 2012*  
 Collage on paper  
 20.7 x 14.3 cm  
 8 1/8 x 5 5/8 in  
 (CC0037)

[View detail](#)



**Rachel Lancaster**  
*Hands, 2018*  
 oil on canvas  
 60 x 70cm  
 (RL0209)

[View detail](#)



**Cath Campbell**  
*Possibly Maybe Study No.3, 2006*  
 pencil on hand cut paper  
 85 x 62 cms  
 33.49 x 24.43 inches  
 (CC0016)

[View detail](#)



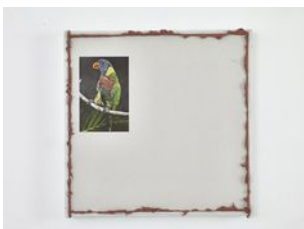
**Rachel Lancaster**  
*Jacket, 2019*  
 oil on canvas  
 60 x 70cm  
 (RL0210)

[View detail](#)



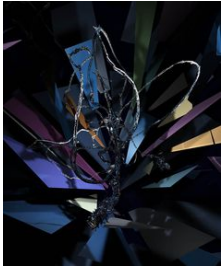
**Cath Campbell**  
*You Fill Up My Senses Part 1, 2007*  
 Pencil on hand cut paper  
 (CC0020)

[View detail](#)



**Paul Merrick**  
*Untitled (Parrot), 2015*  
 Plasterboard, mastic sealant, found image  
 63 x 63 cm  
 24 3/4 x 24 3/4 in  
 (PME0195)

[View detail](#)



**Joe Clark**  
*Seraph 2*, 2010  
 Matt C-type on Aluminium  
 116.8 x 116.8 cm  
 46 x 46 in  
 edition of 3 plus 1 artist's proofs  
 (JCL0070)

[View detail](#)



**Rachel Lancaster**  
 Untitled, 2015  
 Oil on canvas  
 150 x 120 cm  
 59 1/8 x 47 1/4 in  
 (RL0195)

[View detail](#)



**Rachel Lancaster**  
*White Fabric*, 2018  
 oil on canvas  
 60 x 70cm  
 (RL0212)

[View detail](#)



**Joe Clark**  
*Black Box*, 2012  
 2 x C-prints, kappamount, mountboard (framed)  
 68 x 53 cm  
 26 3/4 x 20 7/8 in  
 edition of 1 plus 1 artist's proofs  
 (JCL0082)

[View detail](#)

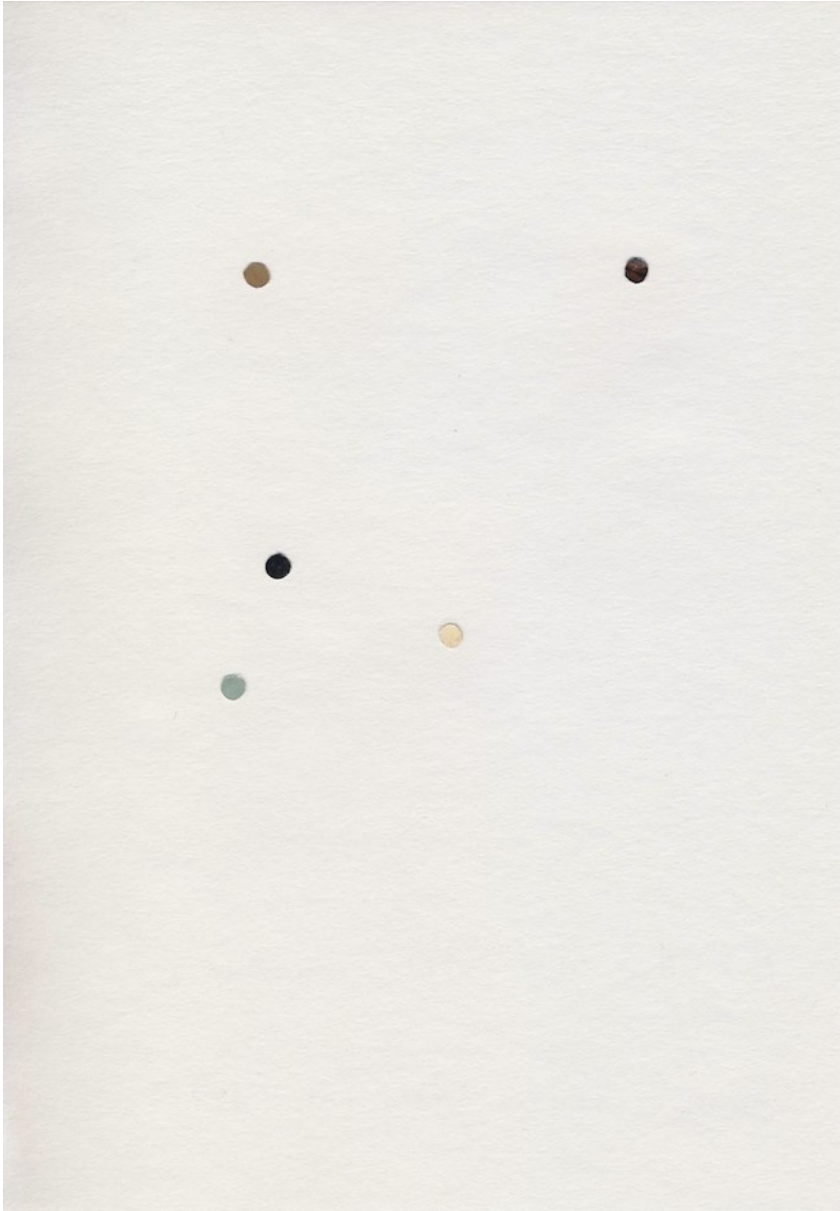


**Paul Merrick**  
*Untitled (Hummingbird#1)*, 2015  
 Plasterboard, pink grip, found image  
 63 x 63 cm  
 24 3/4 x 24 3/4 in  
 (PME0182)

[View detail](#)

CATH CAMPBELL

*Spa Suites, Caesars Palace, Las Vegas, 2012*



Collage on paper

20.7 x 14.3 cm

8 1/8 x 5 5/8 in

(CC0040)

CATH CAMPBELL

*Suite 105, Art Hotel Corona D'oro, Bologna, 2012*



Collage on paper

20.7 x 14.3 cm

8 1/8 x 5 5/8 in

(CC0042)



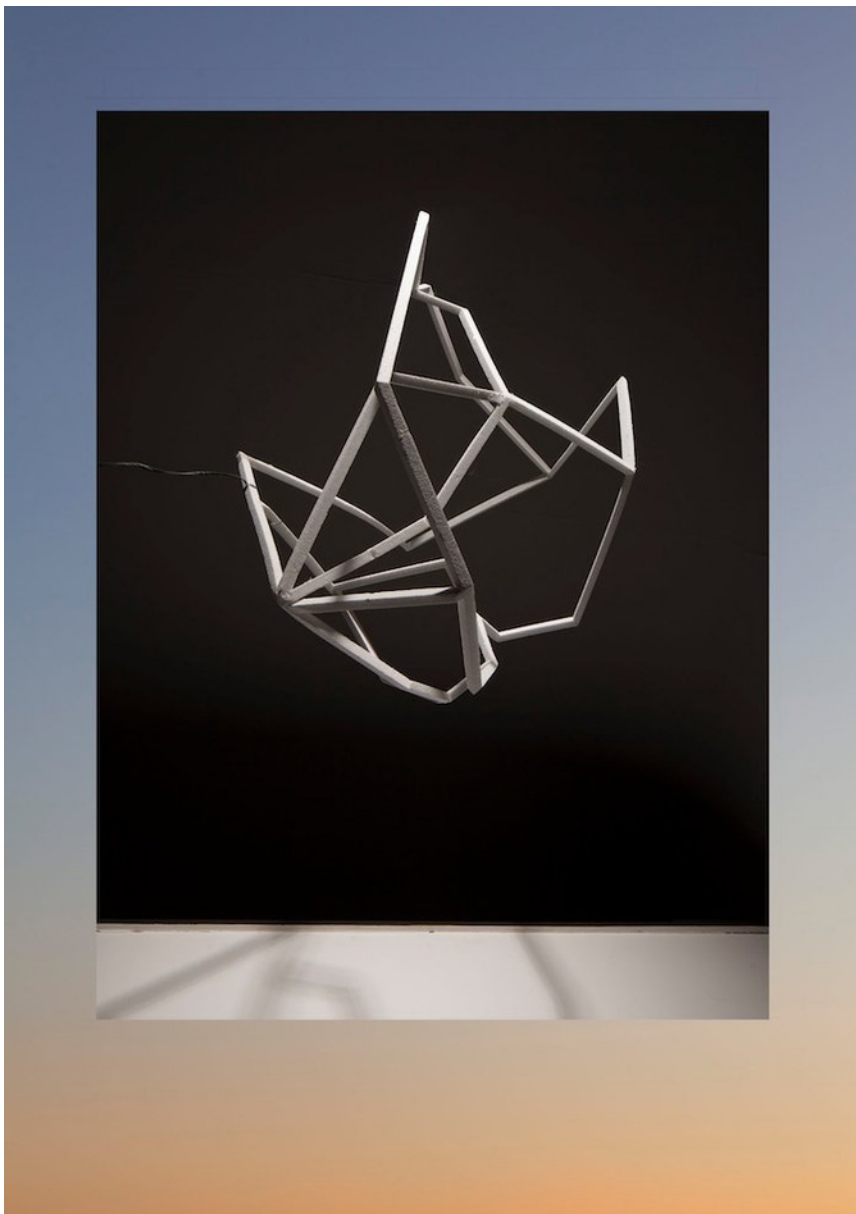
RACHEL LANCASTER  
*Li-lo*, 2016



oil on canvas  
70 x 80cm  
(RL0207)



JOE CLARK  
*Low Gravity*, 2012



C-print, MDF, Poster  
84 x 59 cm  
33 1/8 x 23 1/4 in  
edition of 1 plus 1 artist's proofs  
(JCL0084)

CATH CAMPBELL  
*Untitled (Horse)*, 2014



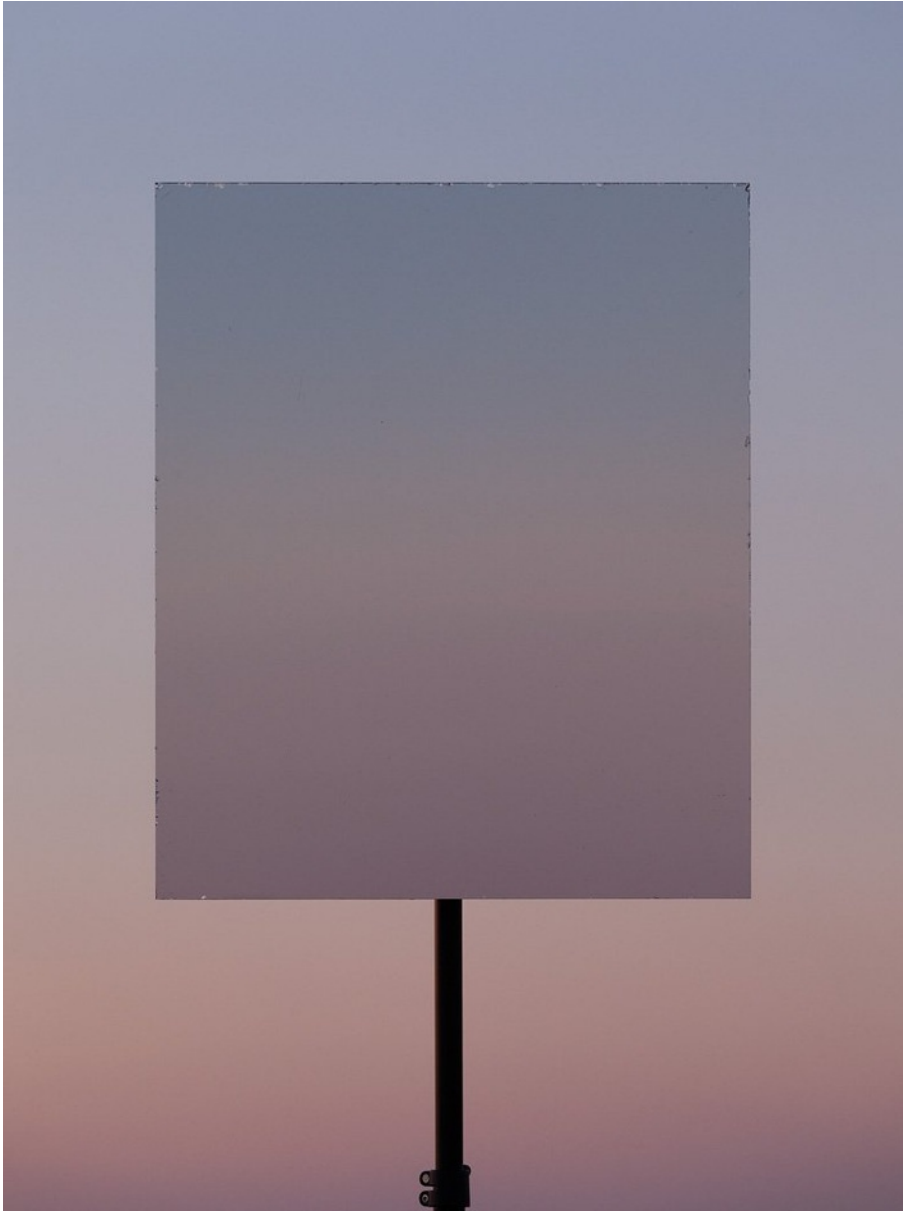
Ink on UV print on aluminium  
44 x 34 cm  
17 3/8 x 13 3/8 in  
(CC0083)

PAUL MERRICK  
*Untitled (Cockerel)*, 2015



Plasterboard, found image, pink grip and masking tape  
63 x 63 cm  
24 3/4 x 24 3/4 in  
(PME0198)

JOE CLARK  
*Sunset Sequence 2, 2013*



C-type print on aluminium  
55 x 41.5 cm  
21 5/8 x 16 3/8 in  
edition of 1 plus 1 artist's proof  
(JCL0102)

**Description**

Taken facing west, north west and east over a half hour period as the sun was setting in a clear sky. The view of the camera is interrupted by a mirror held in position by a lighting stand- juxtaposing the colours from opposing sides of the hemisphere of the sky



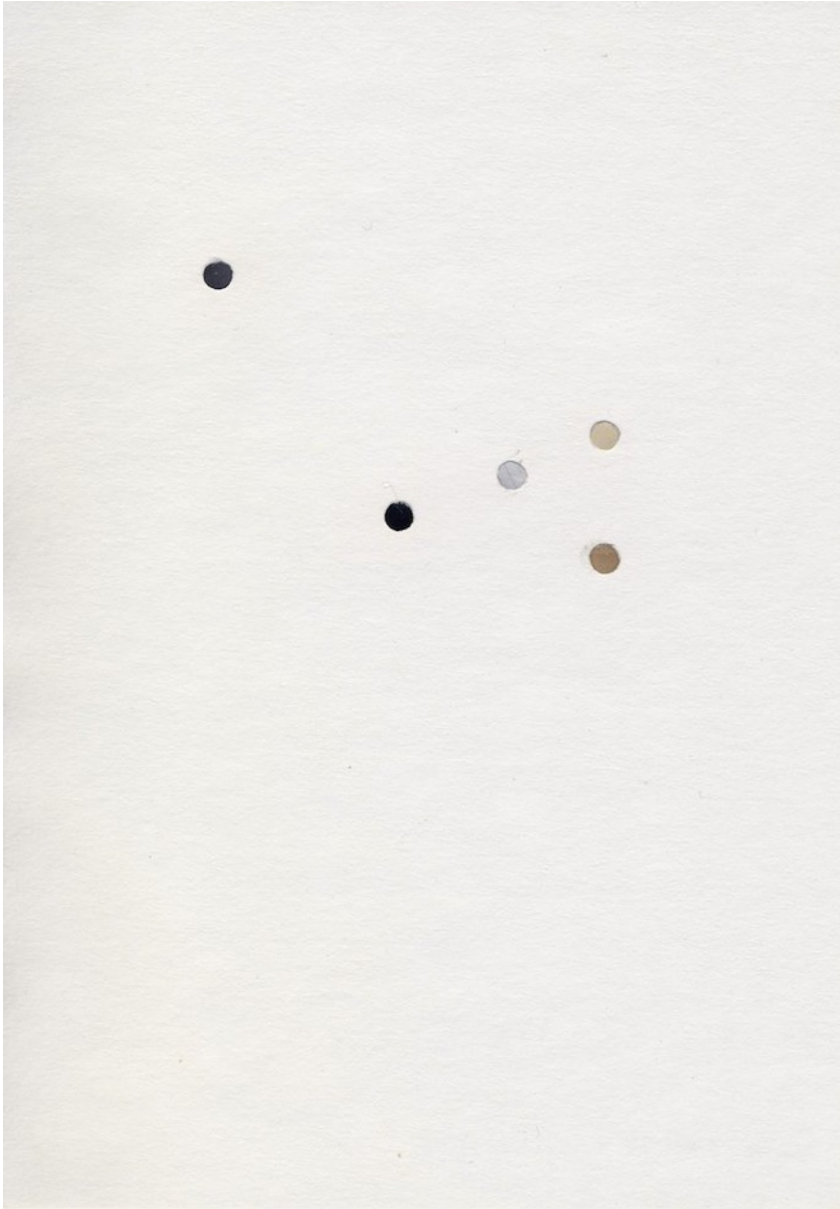
RACHEL LANCASTER  
*Untitled*, 2019



oil on canvas  
80 x 100cm  
(RL0208)

CATH CAMPBELL

*Suite 501, Hotel Gabelshus, Oslo, 2012*



Collage on paper

20.7 x 14.3 cm

8 1/8 x 5 5/8 in

(CC0036)

CATH CAMPBELL

*Superior Room, Melrose Arch Hotel, Johannesburg, 2012*



Collage on paper

20.7 x 14.3 cm

8 1/8 x 5 5/8 in

(CC0038)

JOE CLARK  
*Sunset Sequence 1, 2013*



C-type print on aluminium  
55 x 41.5 cm  
21 5/8 x 16 3/8 in  
edition of 1 plus 1 artist's proof  
(JCL0101)

**Description**

Taken facing west, north west and east over a half hour period as the sun was setting in a clear sky. The view of the camera is interrupted by a mirror held in position by a lighting stand- juxtaposing the colours from opposing sides of the hemisphere of the sky



PAUL MERRICK  
*In The Dance Of The Skeletons*



Found Image on Black Glossy Perspex  
(PME0206)

PAUL MERRICK

*In The Dance Of The Skeletons #12, 2019*



Found Image on Black Glossy Perspex

209mm x 163mm

(PME0210)



PAUL MERRICK  
*In The Dance Of The Skeletons*



Found Image on Black Glossy Perspex  
(PME0207)

PAUL MERRICK

*In The Dance Of The Skeletons #7, 2019*



Found Image on Copper

210mm x 165mm

(PME0203)



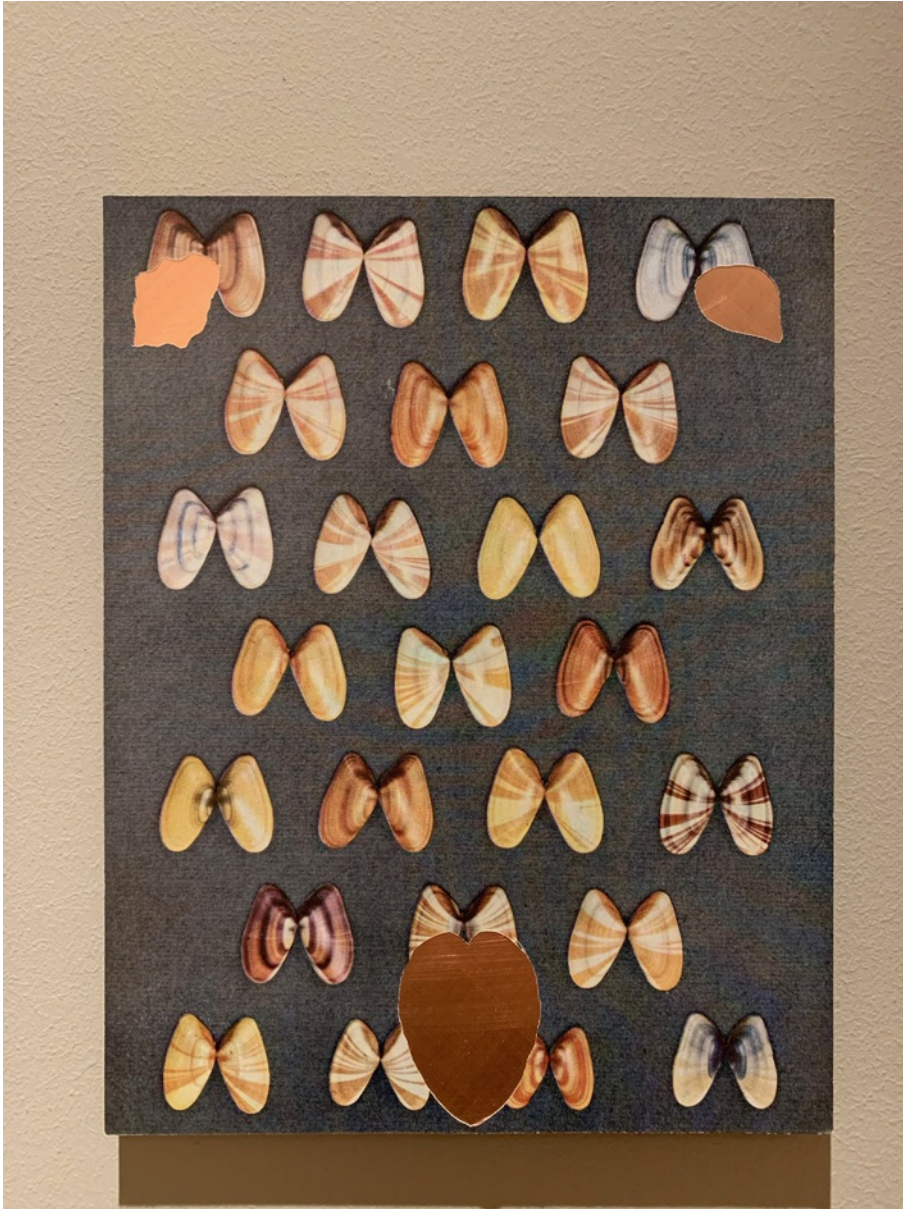
PAUL MERRICK

*In The Dance Of The Skeletons #4, 2019*



Found Image on Copper  
250mm x 164mm  
(PME0209)

PAUL MERRICK  
*In The Dance Of The Skeletons*



Found Image on Copper  
(PME0208)



PAUL MERRICK

*In The Dance Of The Skeletons #3, 2019*



Found Image on Copper

219mm x 166mm

(PME0201)

PAUL MERRICK

*In The Dance Of The Skeletons #2, 2019*



Found Image on Copper

210mm x 164mm

(PME0200)



JOE CLARK  
*Sunset Sequence 3, 2013*

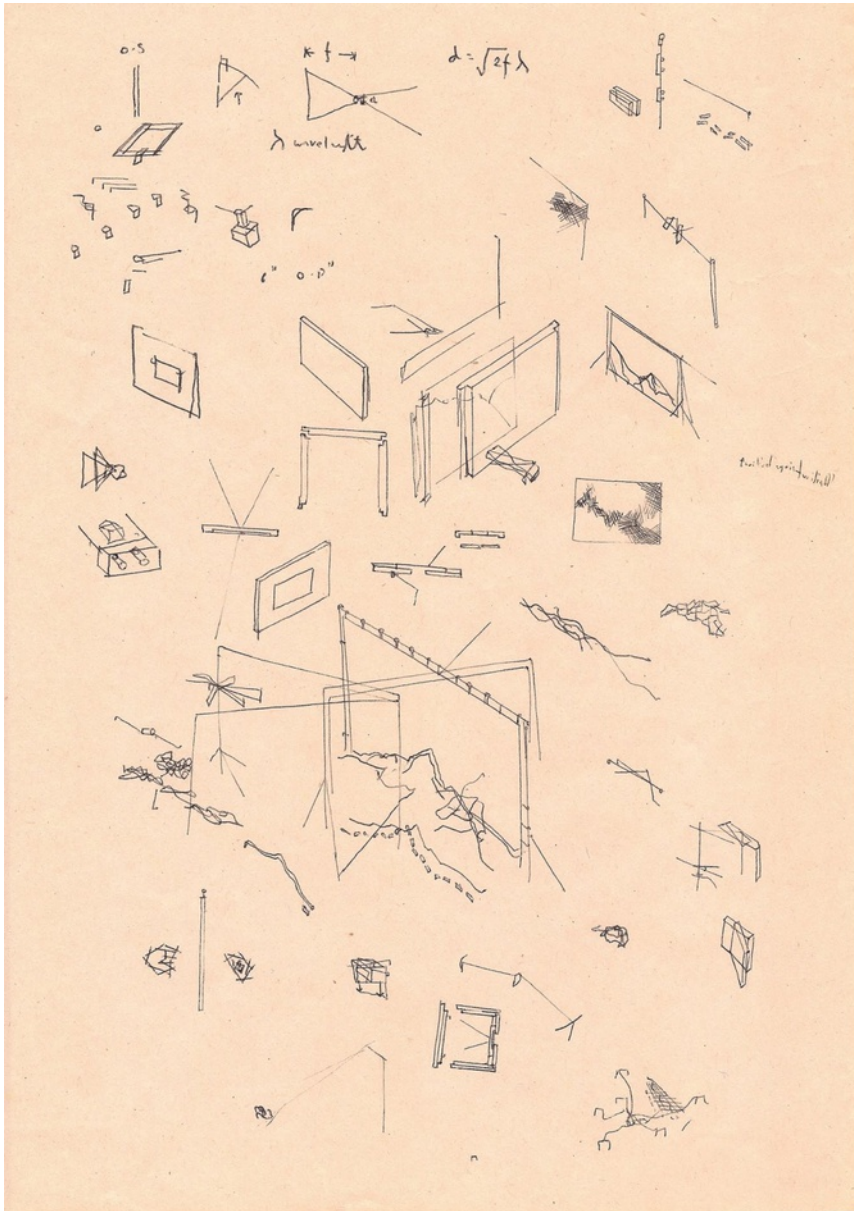


C-type print on aluminium  
55 x 41.5 cm  
21 5/8 x 16 3/8 in  
edition of 1 plus 1 artist's proof  
(JCL0103)

**Description**

Taken facing west, north west and east over a half hour period as the sun was setting in a clear sky. The view of the camera is interrupted by a mirror held in position by a lighting stand- juxtaposing the colours from opposing sides of the hemisphere of the sky

RICHARD RIGG  
*Untitled*, 2015



Ink on Paper  
 29.7 x 21 cm  
 11 3/4 x 8 1/4 in  
 (RR0077)

JOE CLARK  
*Seagrass #3*, 2013



Giclée print mounted on aluminium  
42.5 x 34 cm  
16 3/4 x 13 3/8 in  
edition of 1 plus 1 artist's proofs  
(JCL0106)

JOE CLARK  
*Seagrass #7*, 2013



Giclée print mounted on aluminium  
42.5 x 34 cm  
16 3/4 x 13 3/8 in  
edition of 1 plus 1 artist's proofs  
(JCL0110)

JOE CLARK  
*Seagrass #8*, 2013



Giclée print mounted on aluminium  
42.5 x 34 cm  
16 3/4 x 13 3/8 in  
edition of 1 plus 1 artist's proofs  
(JCL0111)



JOE CLARK  
*Seagrass #6*, 2013



Giclée print mounted on aluminium  
42.5 x 34 cm  
16 3/4 x 13 3/8 in  
edition of 1 plus 1 artist's proofs  
(JCL0109)

JOE CLARK  
*Seagrass #5*, 2013



Giclée print mounted on aluminium  
42.5 x 34 cm  
16 3/4 x 13 3/8 in  
edition of 1 plus 1 artist's proofs  
(JCL0108)

JOE CLARK  
*Seagrass #4*, 2013



Giclée print mounted on aluminium  
42.5 x 34 cm  
16 3/4 x 13 3/8 in  
edition of 1 plus 1 artist's proofs  
(JCL0107)

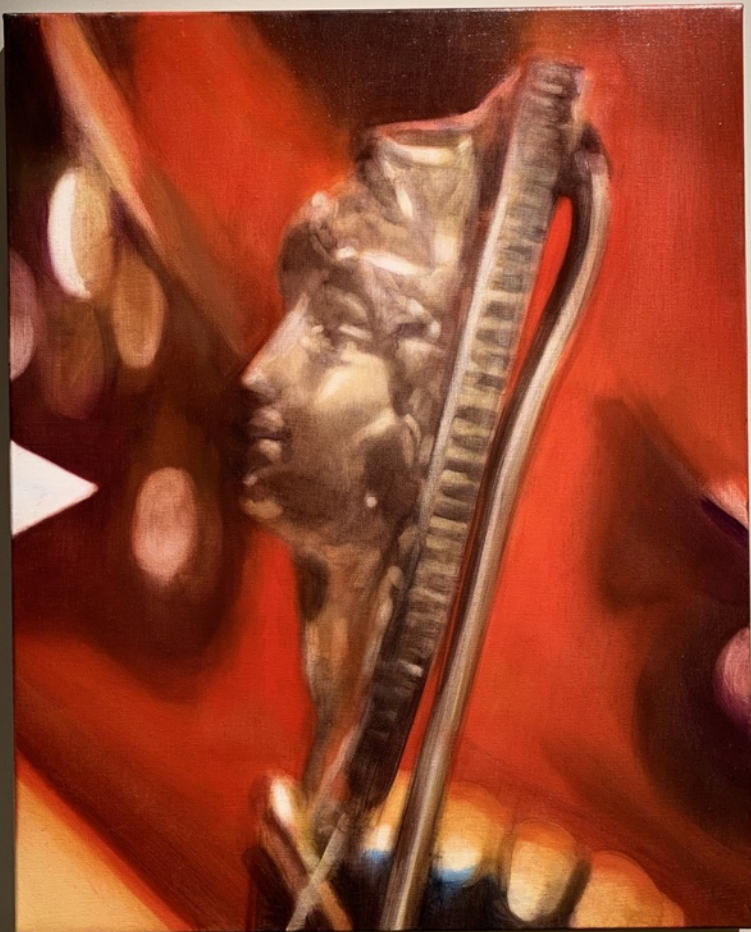


RACHEL LANCASTER  
*Hair*, 2019



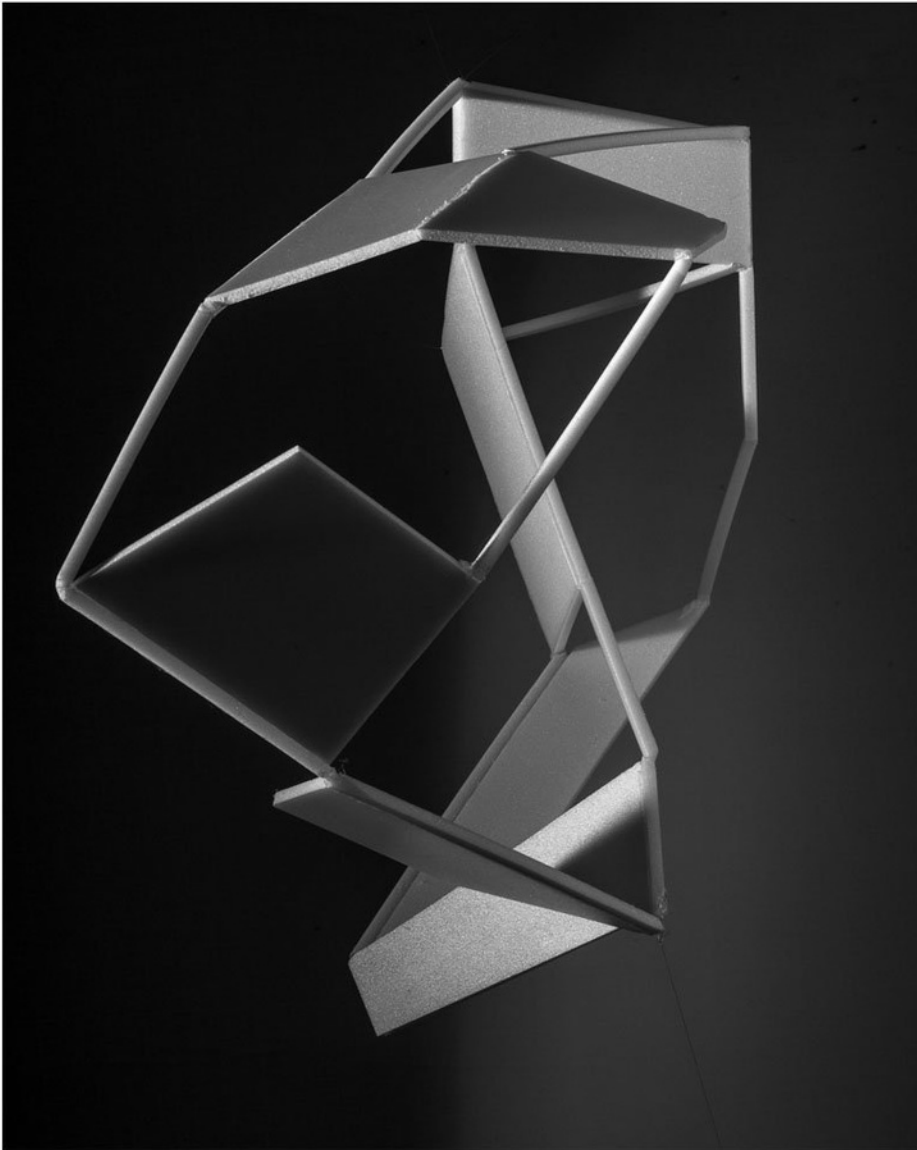
oil on canvas  
50 x 40cm  
(RL0211)

RACHEL LANCASTER  
*Untitled*, 2018



oil on canvas  
50 x 40cm  
(RL0213)

JOE CLARK  
*Transcode*, 2012



C-print, MDF, walnut veneer  
40.5 x 34 cm  
16 x 13 3/8 in  
edition of 1 plus 1 artist's proofs  
(JCL0078)

JOE CLARK  
*flat\_final*, 2012



C-print, MDF, walnut veneer  
40.5 x 34 cm  
16 x 13 3/8 in  
edition of 1 plus 1 artist's proofs  
(JCL0085)



PAUL MERRICK

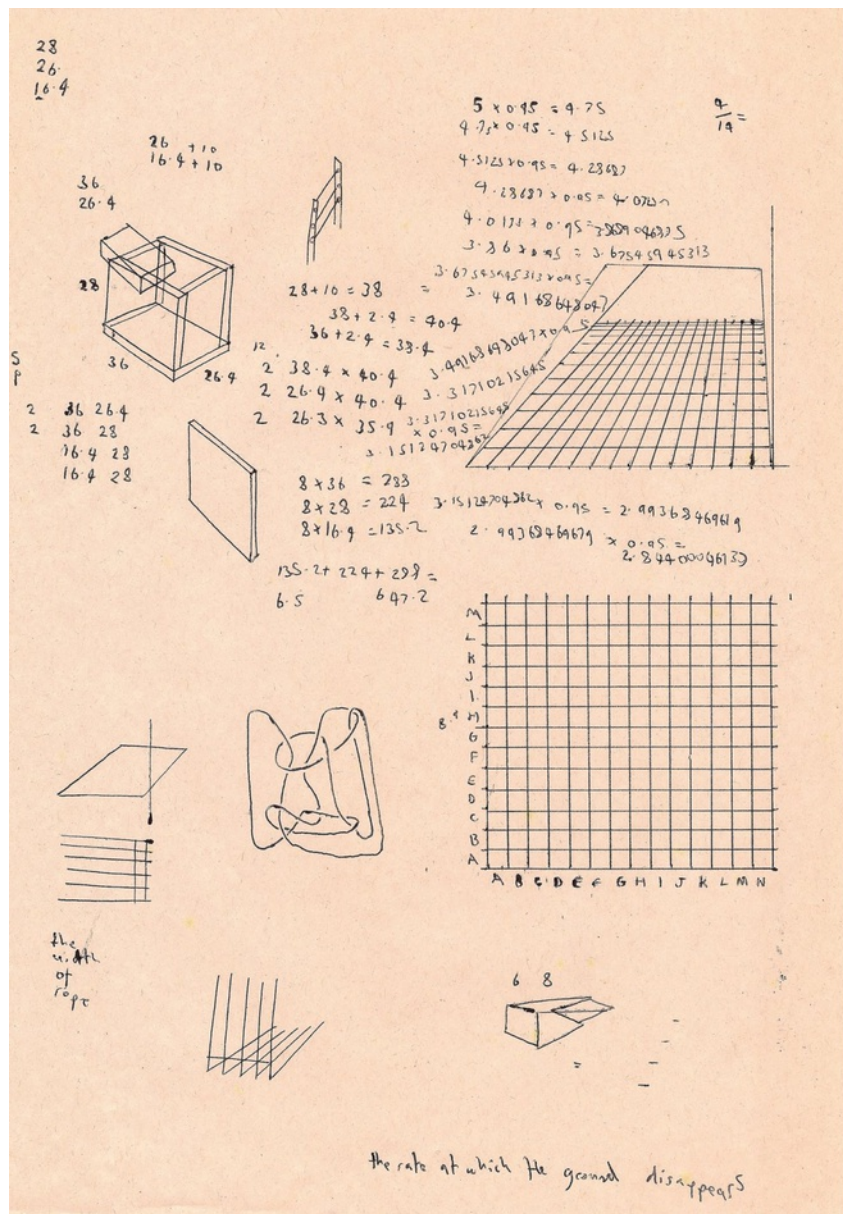
*In The Dance Of The Skeletons*, 2019



Found Image on Aluminium  
(PME0205)

RICHARD RIGG

Untitled, 2015



Ink on Paper

29.7 x 21 cm

11 3/4 x 8 1/4 in

(RR0083)

RACHEL LANCASTER  
*Untitled*, 2015



Oil on canvas  
150 x 120 cm  
59 1/8 x 47 1/4 in  
(RL0193)



CATH CAMPBELL  
*Minimalist, Bo Bo, Buenos Aires, 2012*



Collage on paper  
20.7 x 14.3 cm  
8 1/8 x 5 5/8 in  
(CC0041)



CATH CAMPBELL

*Junior Suite, Grand Hotel Baglioni, Bologna, 2012*



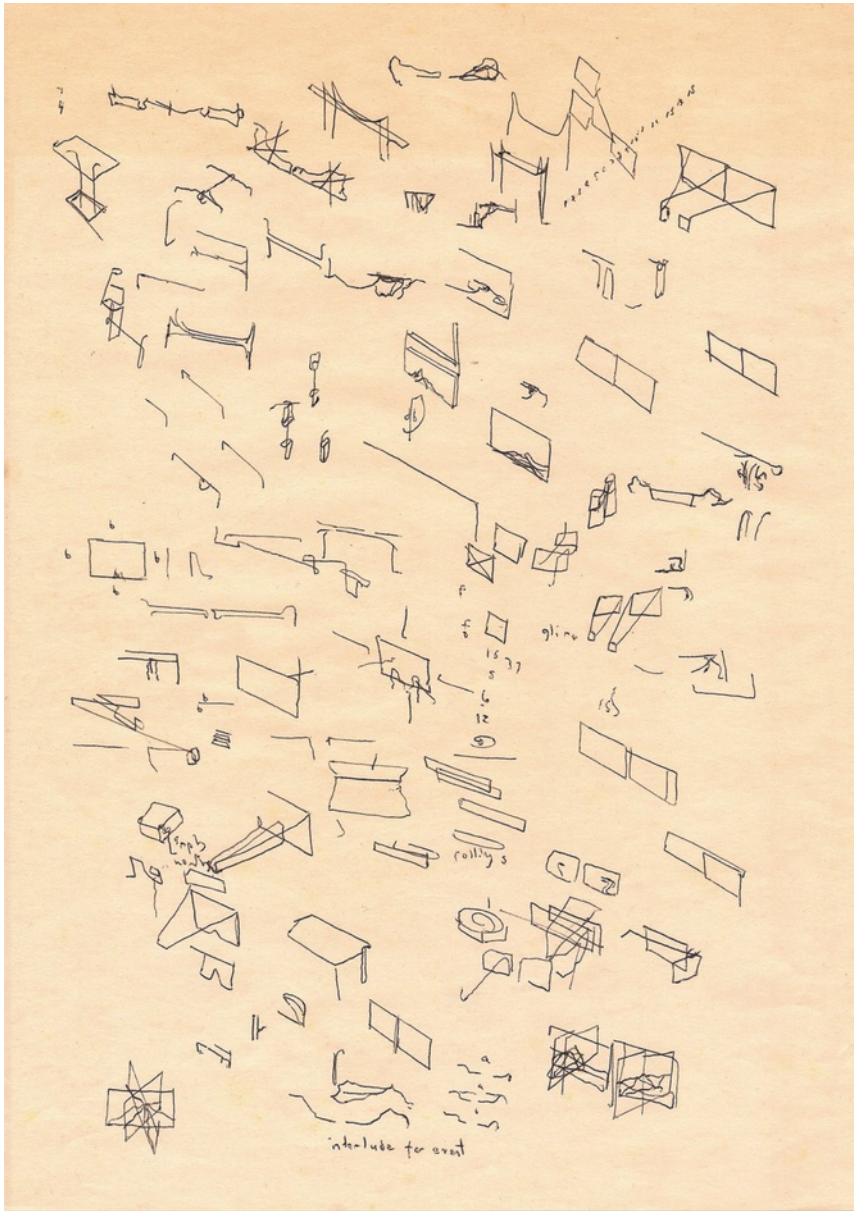
Collage on paper

20.7 x 14.3 cm

8 1/8 x 5 5/8 in

(CC0043)

RICHARD RIGG  
*Untitled*, 2015



Ink on Paper  
29.7 x 21 cm  
11 3/4 x 8 1/4 in  
(RR0081)

PAUL MERRICK  
*Untitled (Warrior)*, 2015



Plasterboard, mastic sealant, found image  
63 x 63 cm  
24 3/4 x 24 3/4 in  
(PME0194)

CATH CAMPBELL

*The Hotel at Mandelay Bay, Las Vegas, 2012*



Collage on paper

20.7 x 14.3 cm

8 1/8 x 5 5/8 in

(CC0039)



CATH CAMPBELL

*The Skylofts, MGM, Las Vegas, 2012*



Collage on paper

20.7 x 14.3 cm

8 1/8 x 5 5/8 in

(CC0037)

RACHEL LANCASTER  
*Hands*, 2018



oil on canvas  
60 x 70cm  
(RL0209)

CATH CAMPBELL  
*Possibly Maybe Study No.3, 2006*



pencil on hand cut paper  
85 x 62 cms  
33.49 x 24.43 inches  
(CC0016)

### **Description**

Cath Campbell makes sculpture, drawing and large scale architectural interventions, which attempt to reinvent our associations with the built environment. Working with engineers, architects, and fabricators, Campbell's public interventions often subtly re-order existing materials within urban space and buildings to create works that are visually tense and deliberately disorientating. This area of Campbell's practice extends to working collaboratively with other artists, creating text works that question their own social and political environment, and architectural structures that deliberately cross a line into design. This strategy is complemented by a series of drawings on paper and in steel of real and invented architectural spaces. The works on paper are palimpsest-like and are often inspired by plans for buildings that are inaccessible. The drawings

borrow their titles from sentimental pop songs such as All I Need Is The Air That You Breathe... or If You Leave Me Now and imply that architecture could be used as a metaphor for states of being. This tenuous relationship between object and subject locates Campbell's practice in an ambiguous territory between profundity and self-parody.



RACHEL LANCASTER

*Jacket*, 2019



oil on canvas

60 x 70cm

(RL0210)

CATH CAMPBELL  
*You Fill Up My Senses Part 1*, 2007



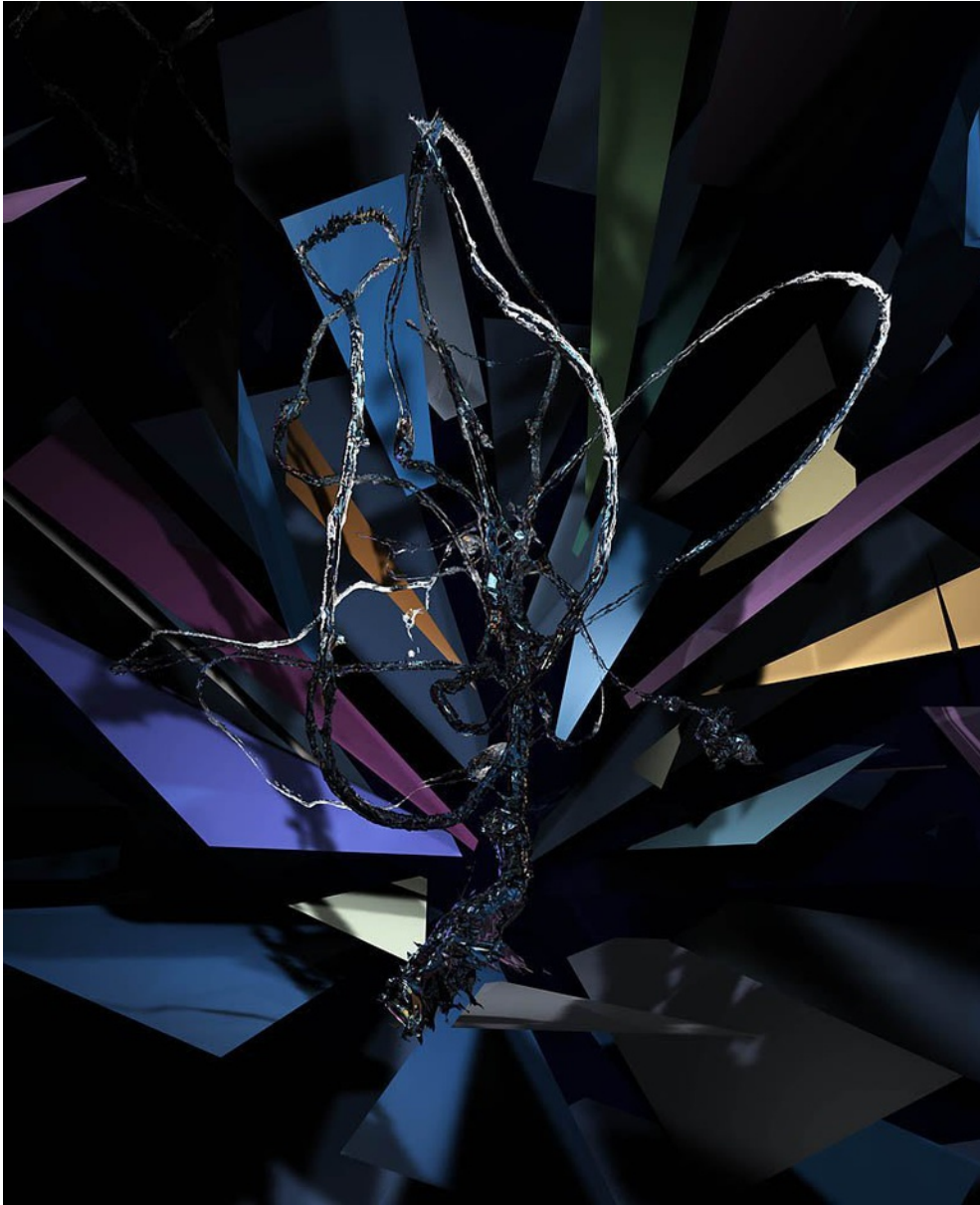
Pencil on hand cut paper  
(CC0020)

PAUL MERRICK  
*Untitled (Parrot)*, 2015



Plasterboard, mastic sealant, found image  
63 x 63 cm  
24 3/4 x 24 3/4 in  
(PME0195)

JOE CLARK  
*Seraph 2*, 2010



Matt C-type on Aluminium  
116.8 x 116.8 cm  
46 x 46 in  
edition of 3 plus 1 artist's proofs  
(JCL0070)

#### **Description**

Balancing a curiosity about the nature of the indexical image- its power and authority in contemporary visual culture- with what he calls 'ritualistic singularities' Clark's work operates on the threshold between a number of ideas. Working across photography (in its broadest sense), Installation and Sculpture, formally speaking the work is an investigation of images and image making in culture and its relationship to lived experience. More broadly, the work is located at the intersection of a romantic spiritualism and an enlightenment rationalism; an urgent truth and a sly contrivance; ideological certainty and an atomised society. He is communicating a vision that is romantic and hopeful but sadly ambivalent about its

relationship to reality.



RACHEL LANCASTER  
*Untitled*, 2015



Oil on canvas  
150 x 120 cm  
59 1/8 x 47 1/4 in  
(RL0195)

RACHEL LANCASTER  
*White Fabric*, 2018



oil on canvas  
60 x 70cm  
(RL0212)

JOE CLARK  
*Black Box*, 2012



2 x C-prints, kappamount, mountboard (framed)  
68 x 53 cm  
26 3/4 x 20 7/8 in  
edition of 1 plus 1 artist's proofs  
(JCL0082)

#### **Description**

I made the work during March and April 2012 in Brazil, the front image derives from my studio investigations there, while the background comes from a research trip for the Marrakech Biennale in winter 2011. The work was fabricated in London, June 2012.

The title simultaneously refers both to Willem Flusser's conception of the camera and associated systems as a 'black box' - an amalgam of technical systems that escape the comprehension of the end user - and a more magical kind of black box. I think I was thinking perhaps of Islam's

Kaaba as I had seen and photographed a derelict copy of it made for a film in the Anti-Atlas plain while I was doing research for the Asset Management series.

The image in front is a simple exercise in studio photography (creating tone and volume from a white styrene form via the careful placement of a single light and reflector), but also results in an iconic motif of sorts. This floats above a marble museum floor that I photographed in Marrakech. The specific juxtaposition of these elements was an intuitive one. The perspective of the two separately photographed pieces of floor converge as they have been flipped, contriving an infinitely receding space that the styrene form floats over. The framing completes the work as it provides a 'vitrine' to contain the spaces and lays on an additional allusion to the presentation of religious artifacts.

Joe Clark (Jun 2012)



PAUL MERRICK  
*Untitled (Hummingbird#1)*, 2015



Plasterboard, pink grip, found image  
63 x 63 cm  
24 3/4 x 24 3/4 in  
(PME0182)