

Stephen Friedman Gallery

Yinka Shonibare CBE RA
Free The Wind, The Spirit,
and The Sun

Friday 6 October – Saturday 11 November 2023

5-6 Cork Street, London



“I started to think about the question of authenticity. What makes an artist an authentic artist? That’s how I ended up in Brixton market, looking at the African textiles. And then I found out that actually, a fabric I always considered authentic had these Indonesian origins, are then produced by the Dutch and sold in West Africa. I thought that was fascinating, that the fabric is also about a relationship with Europe and Indonesia and Africa.”

– Yinka Shonibare CBE RA



Yinka Shonibare CBE RA
Sun Dance Kids (Boy and Girl),
2023

Fibreglass mannequins, Dutch wax
printed cotton textile, wooden
masks, brass, and steel
Each: 133 x 148.5 x 75.5 cm
(52 ³/₈ x 58 ¹/₂ x 29 ³/₄ in)
Plinth: 10 x 130 x 80 cm
(4 x 51 ¹/₈ x 31 ¹/₂ in)



Detail view
Sun Dance Kids (Boy and Girl), 2023



Alternate view
Sun Dance Kids (Boy and Girl), 2023



Detail view
Sun Dance Kids (Boy and Girl), 2023



Yinka Shonibare CBE RA
Feeling Free Like a Bird,
2023

Fibreglass sculpture, hand
painted Dutch wax pattern,
Fibreglass mannequin, Dutch
wax printed cotton textile,
globe, brass, steel, faux
birds, wood, leather, and
metal wires

Sculpture, approx:
280 x 251 x 70 cm
(110 ¼ x 98 7/8 x 27 ½ in)
Plinth: 15 x 105 x 244 cm
(5 7/8 x 41 3/8 x 96 in)
(SHO 1162)



Detail view
Feeling Free Like a Bird, 2023





Alternate view
Feeling Free Like a Bird, 2023





Yinka Shonibare CBE RA
Hybrid Sculpture (Faun on Stilts),
2023

Fibreglass sculpture,
hand-painted with Dutch
wax pattern, hand-carved
wooden mask, leather,
wooden stilts
Sculpture: 266.5 x 64 x 57 cm
(104 ⁷/₈ x 25 ¹/₄ x 22 ¹/₂ in)
Plinth: 10 x 85 cm
(4 x 33 ¹/₂ in)



Detail view
Hybrid Sculpture
(Faun on Stilts), 2023



Alternate view
Hybrid Sculpture
(Faun on Stilts), 2023



Detail view
Hybrid Sculpture
(Faun on Stilts), 2023



Yinka Shonibare CBE RA

Wind Sculpture in Bronze (SG) I, 2023

Hand-painted bronze

Sculpture: 200 x 137 x 147 cm

(78 ³/₄ x 54 x 57 ⁷/₈ in)

Plinth: 15 x 165 cm

(5 ⁷/₈ x 65 in)

Unique in a series of 9

“The idea is to produce something which is hard but to make it look soft, and weightless...I like the relationship between the different cultures, as the fabric is a metaphor for the movement of people and global relationships.”

— Yinka Shonibare CBE RA





Alternate view
Wind Sculpture in Bronze (SG) I, 2023



Scale view
Wind Sculpture in Bronze (SG) I, 2023

An installation view of five African masks by Yinka Shonibare. The masks are displayed on black pedestals of varying heights against a warm, yellowish-brown wall. The central mask is the tallest and most prominent, featuring a large, colorful, abstract face with a prominent, curved, pink and white horn-like structure on top. To its left, a smaller mask with a green and red patterned face sits on a medium-height pedestal. To the right of the central mask, another smaller mask with a colorful, patterned face sits on a medium-height pedestal. Further to the right, a mask with a pink and blue patterned face sits on a medium-height pedestal. The floor is dark and reflective, showing the silhouettes of the pedestals and masks. The lighting is focused on the masks, creating a dramatic effect.

Masks

Installation view

Yinka Shonibare CBE RA: African Spirits of Modernism, Stephen Friedman Gallery, 2021, London, UK



Yinka Shonibare CBE RA
Hybrid Mask (Nwantantay),
2023

Wood, acrylic paint and brass
Mask: 191 x 31 x 35 cm
(75 ¼ x 12 ¼ x 13 ¾ in)
Overall: 203 x 50 x 50 cm
(79 ⅞ x 19 ¾ x 19 ¾ in)



Detail view
Hybrid Mask
(Nwantantay), 2023



Detail view
Hybrid Mask (Nwantantay), 2023



Alternate view
Hybrid Mask (Nwantantay), 2023



Yinka Shonibare CBE RA
Hybrid Mask (Ndeemba),
2023

Wood, acrylic paint,
raffia and brass
Mask: 78 x 50 x 50 cm
(30 ³/₄ x 19 ³/₄ x 19 ³/₄ in)
Overall: 148 x 50 x 50 cm
(58 ¹/₄ x 19 ³/₄ x 19 ³/₄ in)



Alternate view
Hybrid Mask
(Ndeemba), 2023





Alternate view
Hybrid Mask
(Ndeemba), 2023

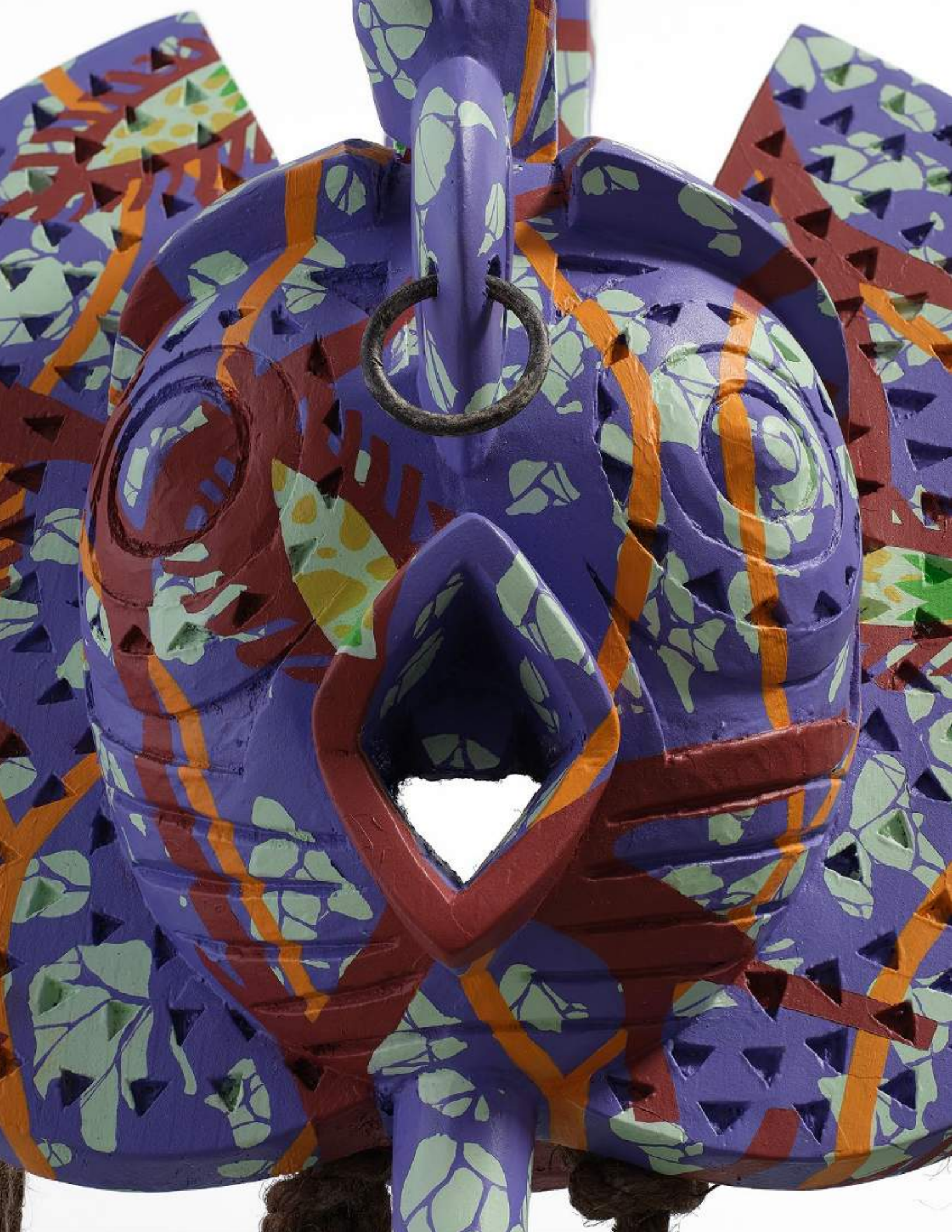


Yinka Shonibare CBE RA
Hybrid Mask (Gurunsi), 2023

Wood, acrylic paint and brass
Mask: 50 x 29 x 22.5 cm
(19 ³/₄ x 11 ³/₈ x 8 ⁷/₈ in)
Overall: 143 x 29 x 23 cm
(56 ¹/₄ x 11 ³/₈ x 9 in)



Alternate view
Hybrid Mask
(Gurunsi), 2023





Alternate view
Hybrid Mask (Gurunsi), 2023



Yinka Shonibare CBE RA

Hybrid Mask (Tsekedi),
2023

Wood, acrylic paint, raffia and brass

Mask: 90 x 90 x 50 cm
(35 ³/₈ x 35 ³/₈ x 19 ³/₄ in)

Overall: 190 x 90 x 50 cm
(74 ³/₄ x 35 ³/₈ x 19 ³/₄ in)



Alternate view
Hybrid Mask
(Tsekedi), 2023





Detail view
Hybrid Mask
(Tsekedi), 2023



Yinka Shonibare CBE RA
Hybrid Mask (Guro), 2023

Wood, acrylic paint and brass
Mask: 48.5 x 23 x 20 cm
(19 $\frac{1}{8}$ x 9 x 7 $\frac{7}{8}$ in)
Overall: 160.5 x 23 x 21 cm
(63 $\frac{1}{4}$ x 9 x 8 $\frac{1}{4}$ in)



Detail view
Hybrid Mask
(Guro), 2023



Alternate view
Hybrid Mask
(Guro), 2023



Detail view
Hybrid Mask (Guro), 2023





Quilts

Installation view

Yinka Shonibare CBE RA: End of Empire, Museum der Moderne Salzburg, Austria, 2021



Yinka Shonibare CBE RA
African Bird Magic (Crested Lark),
2023

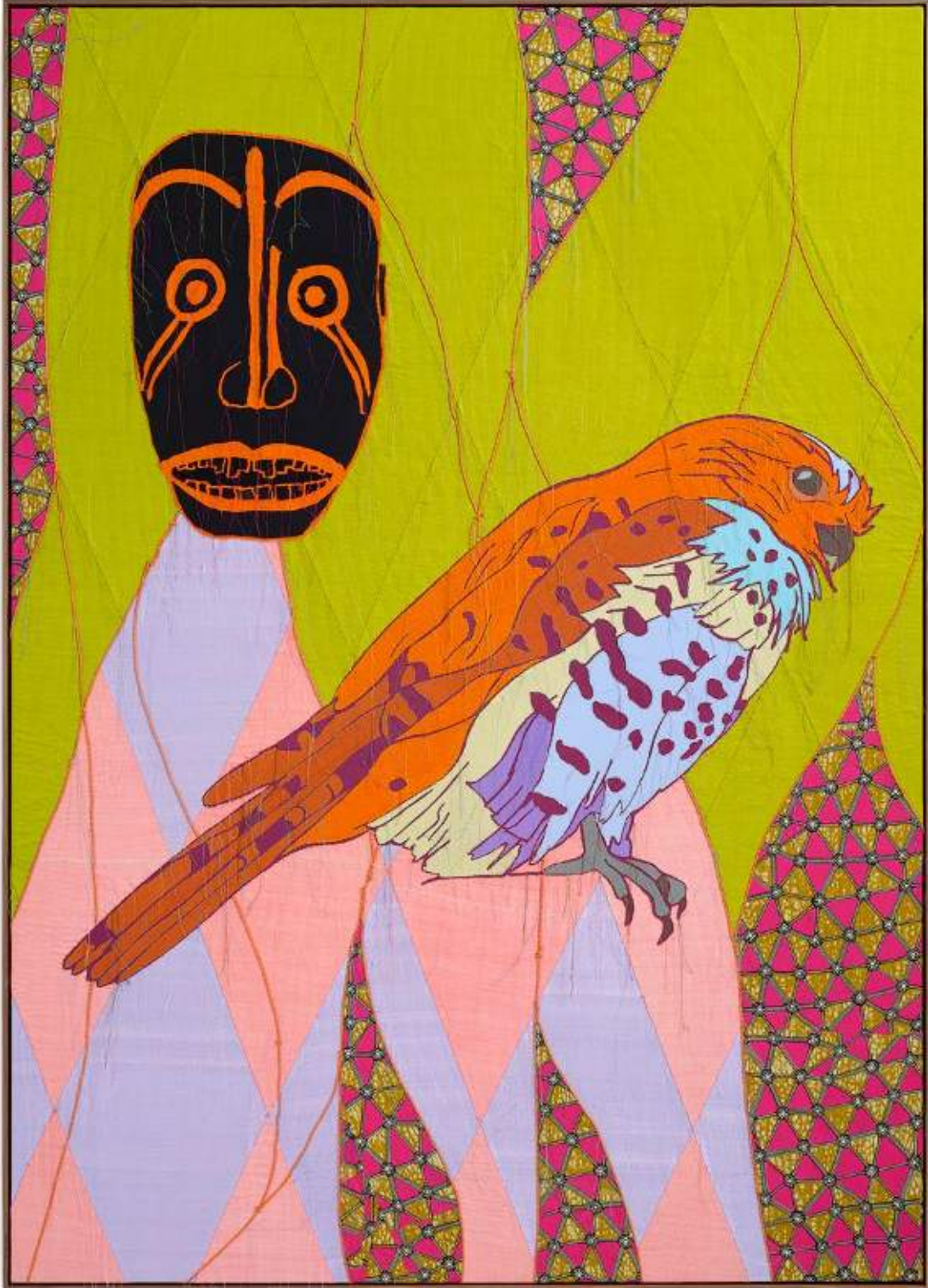
Patchwork, appliqué, embroidery
and Dutch wax printed cotton textile
179 x 250 cm (70 ½ x 98 ¾ in)
Framed: 182.5 x 254 cm (71 ⅞ x 100 in)





Scale view
African Bird Magic (Crested Lark), 2023

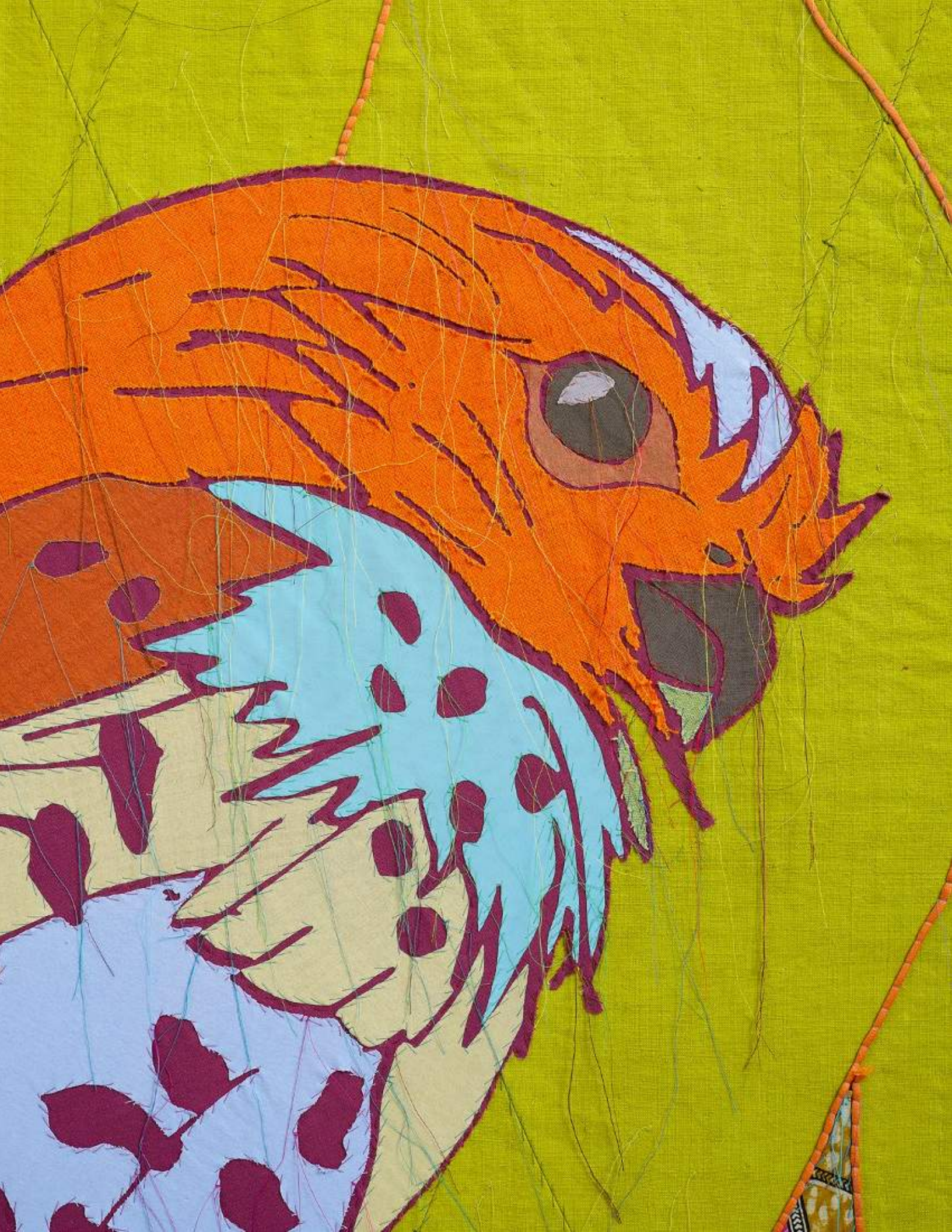


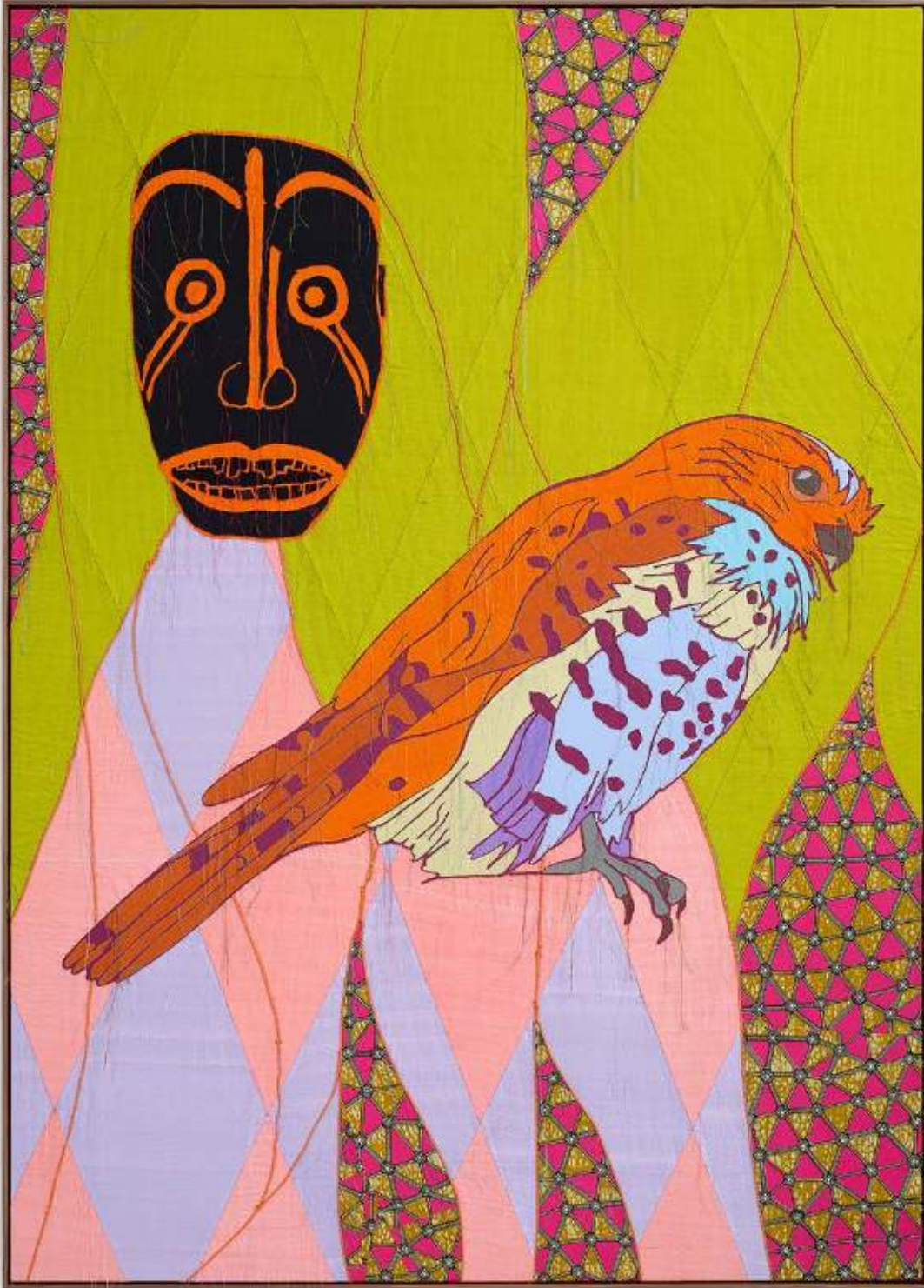


Yinka Shonibare CBE RA

African Bird Magic (Saker Falcon) I,
2023

Patchwork, appliqué, embroidery
and Dutch wax printed cotton textile
250 x 179 cm (98 ³/₈ x 70 ¹/₂ in)
Framed: 253.5 x 182.5 cm (99 ³/₄ x 71 ⁷/₈ in)





Scale view
African Bird Magic (Saker Falcon) I, 2023





Yinka Shonibare CBE RA

African Bird Magic

(Yellow Breasted Bunting) II, 2023

Patchwork, appliqué, embroidery
and Dutch wax printed cotton textile

250 x 179 cm (98 ³/₈ x 70 ¹/₂ in)

Framed: 253.5 x 182.5 cm (99 ³/₄ x 71 ⁷/₈ in)





Scale view
African Bird Magic
(Yellow Breasted Bunting) II, 2023



Stephen Friedman Gallery

Material (SG) IV, 2023

Wednesday 20 September - Sunday 29 October 2023

Frieze Sculpture
Regent's Park, London



Yinka Shonibare CBE RA
Material (SG) IV, 2023

Steel armature with hand
painted fibreglass resin cast
400 x 235 x 200 cm
(157 ½ x 92 ½ x 78 ¾ in)
Unique in a series of 9

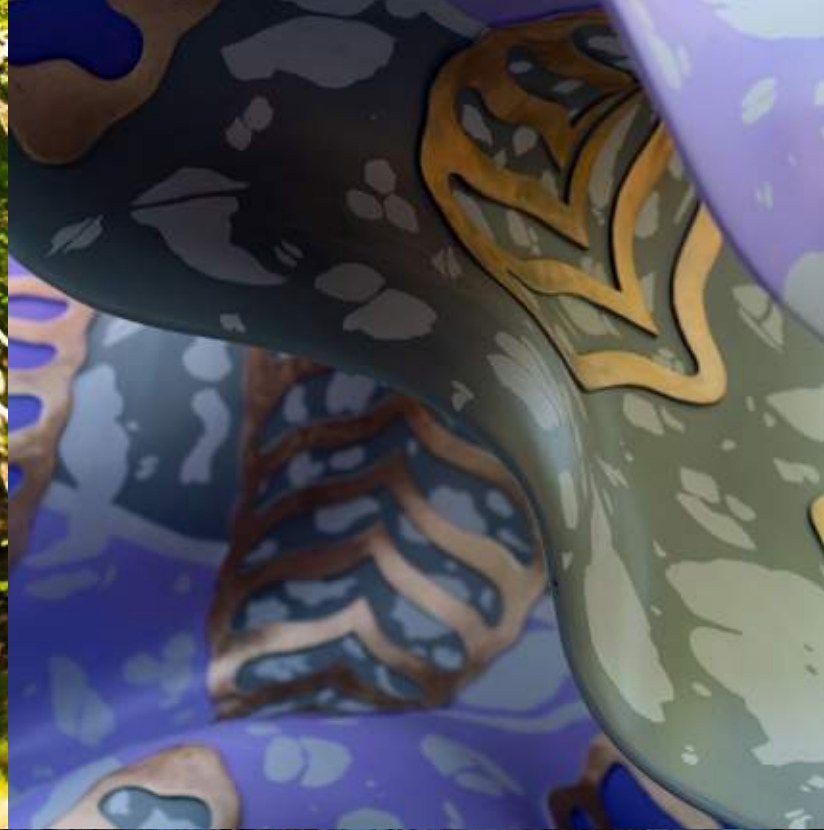


Installation view
Frieze Sculpture, Regent's Park, London, 2023





Installation view
Frieze Sculpture, Regent's Park, London, 2023



Works List



Yinka Shonibare CBE RA
Sun Dance Kids (Boy and Girl), 2023

Fibreglass mannequins, Dutch wax printed cotton textile, wooden masks, brass, and steel
Each: 133 x 148.5 x 75.5 cm
(52 ³/₈ x 58 ¹/₂ x 29 ³/₄ in)
Plinth: 10 x 130 x 80 cm
(4 x 51 ¹/₈ x 31 ¹/₂ in)
(SHO 1171)

For further information, please click [here](#).



Yinka Shonibare CBE RA
Wind Sculpture in Bronze (SG) I, 2023

Hand-painted bronze
Sculpture: 200 x 137 x 147 cm
(78 ³/₄ x 54 x 57 ⁷/₈ in)
Plinth: 15 x 165 cm
(5 ⁷/₈ x 65 in)
Unique in a series of 9
(SHO 1161)

For further information, please click [here](#).



Yinka Shonibare CBE RA
Feeling Free Like a Bird, 2023

Fibreglass sculpture, hand-painted with Dutch wax pattern, Fibreglass mannequin, Dutch wax printed cotton textile, globe, brass, steel, faux birds, wood, leather, and metal wires
Sculpture, approx: 280 x 251 x 70 cm (110 ¹/₄ x 98 ⁷/₈ x 27 ¹/₂ in)
Plinth: 15 x 105 x 244 cm
(5 ⁷/₈ x 41 ³/₈ x 96 in)
(SHO 1162)

For further information, please click [here](#).



Yinka Shonibare CBE RA
Hybrid Mask (Nwantantay), 2023

Wood, acrylic paint and brass
Mask: 191 x 31 x 35 cm
(75 ¹/₄ x 12 ¹/₄ x 13 ³/₄ in)
Overall: 203 x 50 x 50 cm
(79 ⁷/₈ x 19 ³/₄ x 19 ³/₄ in)
(SHO 1165)

For further information, please click [here](#).



Yinka Shonibare CBE RA
Hybrid Sculpture (Faun on Stilts), 2023

Fibreglass sculpture, hand-painted with Dutch wax pattern, hand-carved wooden mask, leather, wooden stilts
Sculpture: 266.5 x 64 x 57 cm
(104 ⁷/₈ x 25 ¹/₄ x 22 ¹/₂ in)
Plinth: 10 x 85 cm
(4 x 33 ¹/₂ in)
(SHO 1163)

For further information, please click [here](#).



Yinka Shonibare CBE RA
Hybrid Mask (Ndeemba), 2023

Wood, acrylic paint, raffia and brass
Mask: 78 x 50 x 50 cm
(30 ³/₄ x 19 ³/₄ x 19 ³/₄ in)
Overall: 148 x 50 x 50 cm
(58 ¹/₄ x 19 ³/₄ x 19 ³/₄ in)
(SHO 1164)

For further information, please click [here](#).

Works List



Yinka Shonibare CBE RA
Hybrid Mask (Gurunsi), 2023

Wood, acrylic paint and brass
Mask: 50 x 29 x 22.5 cm
(19 ¾ x 11 ⅜ x 8 ⅞ in) Overall:
143 x 29 x 23 cm
(56 ¼ x 11 ⅜ x 9 in)
(SHO 1166)

For further information, please
click [here](#).



Yinka Shonibare CBE RA
Hybrid Mask (Tsekedi), 2023

Wood, acrylic paint, raffia and
brass
Mask: 90 x 90 x 50 cm
(35 ⅜ x 35 ⅜ x 19 ¾ in)
Overall: 190 x 90 x 50 cm
(74 ¾ x 35 ⅜ x 19 ¾ in)
(SHO 1167)

For further information, please
click [here](#).



Yinka Shonibare CBE RA
Hybrid Mask (Guro), 2023

Wood, acrylic paint and brass
Mask: 48.5 x 23 x 20 cm
(19 ⅛ x 9 x 7 ⅞ in)
Overall: 160.5 x 23 x 21 cm
(63 ¼ x 9 x 8 ¼ in)
(SHO 1168)

For further information, please
click [here](#).



Yinka Shonibare CBE RA
African Bird Magic (Crested Lark), 2023

Patchwork, appliqué, embroidery and
Dutch wax printed cotton textile 179 x
250 cm
(70 ½ x 98 ⅜ in)
Framed: 182.5 x 254 cm
(71 ⅞ x 100 in)
(SHO 1169)

For further information,
please click [here](#).



Yinka Shonibare CBE RA
African Bird Magic (Saker Falcon) I,
2023

Patchwork, appliqué, embroidery and
Dutch wax printed cotton textile 250 x
179 cm
(98 ⅜ x 70 ½ in)
Framed: 253.5 x 182.5 cm
(99 ¾ x 71 ⅞ in)
(SHO 1170)

For further information,
please click [here](#).



Yinka Shonibare CBE RA
African Bird Magic
(Yellow Breasted Bunting) II, 2023

Patchwork, appliqué, embroidery and
Dutch wax printed cotton textile 250 x
179 cm
(98 ⅜ x 70 ½ in)
Framed: 253.5 x 182.5 cm
(99 ¾ x 71 ⅞ in)
(SHO 1174)

For further information,
please click [here](#).

Works List



Yinka Shonibare CBE RA
Material (SG) IV, 2023

Steel armature with hand
painted fibreglass resin cast
400 x 235 x 200 cm
(157 ½ x 92 ½ x 78 ¾ in)
Unique in a series of 9
(SHO 1039)

For further information, please
click [here](#).

Yinka Shonibare

CBE RA

Free The Wind, The Spirit, and The Sun

6 October – 11 November 2023

Contact Us

For **press enquiries** please contact
press@stephenfriedman.com

For **sales enquiries** please contact
sales@stephenfriedman.com

For further details please contact
info@stephenfriedman.com

Stephen Friedman Gallery presents *Free The Wind, The Spirit, and The Sun* – a new exhibition by British-Nigerian artist Yinka Shonibare CBE RA – and the first to take place at its new London home on Cork Street, Mayfair. Having joined in 1996, Shonibare is one of the gallery's longest represented artists.

The exhibition includes a group presentation of African artists, and artists from the African diaspora, curated by Shonibare. Some of these artists participated in Shonibare's residency program at Guest Artists Space Foundation in Lagos, Nigeria. Paintings, sculptures, mixed media pieces and works on paper are exhibited.

Described as a “celebration of nature” by Shonibare, the first two rooms of the exhibition comprise a vibrant body of sculptures, masks and quilts. The show takes inspiration from the dada spirit; formed in Zurich during the First World War at Cabaret Voltaire by Hugo Ball and Emmy Hennings, the movement challenged the bourgeois values and traditions of Western art, from the Renaissance to naturalism and impressionism. Throughout the war, dada artists often staged performances in bewildered, trance-like states, evoking

African and Oceanic cultures to express animalism, originality, and freedom.

Shonibare makes references to the leisure activities of the aristocracy and westernised interpretations of African spirituality. A life-size sculpture, *Feeling Free Like a Bird*, is based on a portrait of a privileged equestrian painted by George Stubbs, whose studies of the anatomy of animals led him to naturalistic paintings of horses. The woman in the installation is riding side-saddle, reflecting society's demand for female modesty in both dress and behaviour. She is riding away from such restrictions, carrying native African birds in turn freeing themselves from their cages. These three-dimensional birds come to life from the pictorial quilts in the exhibition, which depict various species made critically endangered by climate change and pollution. The seemingly whimsical becomes an expression of the desire to escape from a world faced with economic challenges and impending environmental catastrophes.

Wind Sculpture in Bronze (SG) echoes the movement of wind as if it is about to dance or move away.

It combines explorations into the physical effect wind has on African textiles and reflects the role it has played in the story of the movement of the African diaspora.

The dada spirit of the exhibition disrupts the notion of geographically determined traditions. Shonibare's Hybrid Masks are a group of zoomorphic masks combining human and animal features that focus on the transformational qualities and spiritual meaning of masquerades in West African regions. They stem from ritualistic practices marking initiation and celebrating harvest and fertility. Dadaists considered these masquerades as a rejection of the whole of Western civilisation as well as an anti-war protest.

The exhibition is an expression of freedom in the creative community, and this is explored in the final room by the nine artists. G.A.S Foundation is a non-profit dedicated to facilitating international cultural exchange, developing creative and research practices through residencies and collaborations.

About the artist

Yinka Shonibare CBE RA lives and works in London. In Spring 2024, he will have a solo exhibition at Serpentine, London, UK. He will also participate in Nigeria's Pavilion at La Biennale di Venezia, the 60th International Art Exhibition in Venice, Italy. Shonibare's new public work includes two outdoor sculptures; Material (SG) IV is a striking four metre work for Frieze Sculpture unveiled in September 2023, and a work commissioned by the David Oluwale Memorial Association will be unveiled in Aire Park as part of Leeds 2023.

To mark Sharjah Biennial's 30th anniversary in February 2023, Shonibare was commissioned to create a series of new works for the exhibition. A major solo show by Shonibare opened at Frederik Meijer Gardens & Sculpture Park in April 2022, spanning three decades of his practice. The artist was commissioned to transform the Gallery at sketch, London as part of a long-term programme of artist-conceived restaurants, which opened to the public in March 2022. The artist's largest European survey exhibition End of Empire, opened at Museum der Moderne, Salzburg, Austria in May 2021.

Shonibare was a Turner Prize nominee in 2004 and was elected as a Royal Academician by the Royal Academy, London in 2013. He was awarded the decoration of Most Excellent Order of the British Empire or MBE in 2004 and Commander of the Most Excellent Order of the British Empire or CBE in 2019. Shonibare received the prestigious Art Icon Award from Whitechapel Gallery, London and an honorary degree from The Courtauld Institute, London in 2021.

Stephen Friedman Gallery

Stephen Friedman Gallery represents exceptional artists from around the world. Since its inauguration in 1995, the gallery has been based in London on Old Burlington Street, Mayfair. In Autumn 2023, Stephen Friedman Gallery will expand and relocate to Cork Street, Mayfair. The new location will be designed by award-winning London architectural firm David Kohn Architects. Later in the year, the gallery will open its first space outside the UK in Tribeca, New York. It will be designed by Trimble Architecture.



Portrait of Yinka Shonibare CBE RA