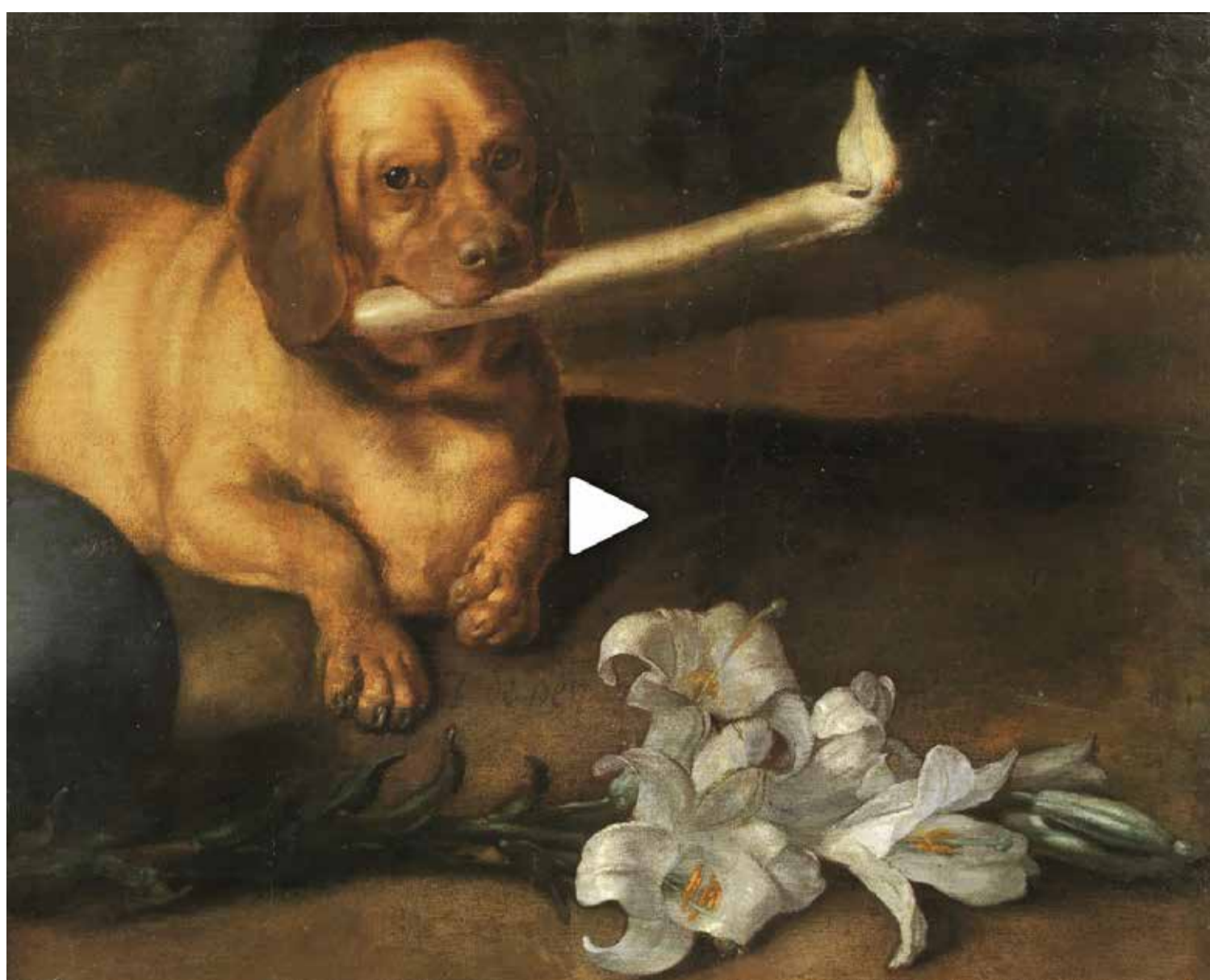


LOOKING
CLOSELY



Juan de Pareja (Antequera 1606 - 1670 Madrid), *Dog with a Candle and Lilies*, ca. 1660s, oil on canvas, 47 x 57 cm

JUAN DE PAREJA (1606-1670): From Slave to Painter of the King



Velázquez (Diego Rodríguez de Silva y Velázquez) (Seville 1599–1660 Madrid), *Juan de Pareja*, 1650, oil on canvas, 32 x 27 1/2 in. (81.3 x 69.9 cm), Metropolitan Museum of Art, Purchase, Fletcher and Rogers Funds, and Bequest of Miss Adelaide Milton de Groot (1876-1967), by exchange, supplemented by gifts from friends of the Museum, 1971, no. 1971.86

A recently discovered canvas of a hound holding a candle in its mouth is by Juan de Pareja, a painter who led an extraordinary life. He began as a slave in the studio of Diego Velázquez, secured his freedom, and forged a successful career as an artist in seventeenth-century Spain. Born in 1606 in the province of Malaga, Pareja was of mixed race: his mother was a Moor, his father Spanish. Spain was a prolific slave-trading nation, and most artists owned slaves. While grinding colours and stretching canvases in the workshop of Velázquez, Pareja formed his ambition to become a painter.

WATCH

Our new video on Juan de Pareja and his painting of a hound.

READ

Virginia Brilliant's recent publication for a discussion of the artist and the rediscovered painting.

VISIT

The Metropolitan Museum of Art's website to explore Velázquez's portrait of Juan de Pareja.

LEARN

*More about the portrait of Juan de Pareja from contemporary artist Julie Mehretu, as part of the Metropolitan Museum of Art's series *The Artist Project*.*