

# KASMIN

## DALLAS ART FAIR ONLINE VIEWING ROOM

Kasmin is pleased to participate in Dallas Art Fair Online, accessible via the fair's digital portal between April 14–23, 2020. The gallery will present a selection of modern and contemporary work by artists including: Alma Allen, Ali Banisadr, Tina Barney, Saint Clair Cemin, William N. Copley, Ian Davenport, Max Ernst, Barry Flanagan, Jane Freilicher, Alison Hall, Robert Indiana, Alex Katz, Claude Lalanne, Matvey Levenstein, Robert Motherwell, James Nares, Roxy Paine, Robert Polidori, Elliott Puckette, Mark Ryden, Jan-Ole Schieman, Joel Shapiro, Bosco Sodi, Keith Sonnier, Naama Tsabar, Bernar Venet, Andy Warhol, and David Wiseman.

For full details and larger images, please see the end of this document.



**Alma Allen**

*Not Yet Titled*, 2019

bronze

35 3/8 x 16 7/8 x 15 3/4 inches

90 x 43 x 40 cm

(PK 25676)

\$ 35,000.00

[View detail](#)



**Ali Banisadr**

*Nocturne*, 2019

hand-coloured aquatint with photogravure, spitbite, drypoint, and burnishing on Hahnemuhle Copperplate Bright White 300 gsm paper

19 1/8 x 25 inches, image

48.3 x 63.5 cm

26 3/4 x 31 1/2 inches, paper

68 x 80 cm

Edition of 25

(PKE 25642)

\$ 7,000.00

[View detail](#)



**Tina Barney**

*Family Commission with Snake*, 2007

chromogenic color print

48 x 60 inches

121.9 x 152.4 cm

Edition of 10 (#2/10)

(PKE 25545)

\$ 35,000.00

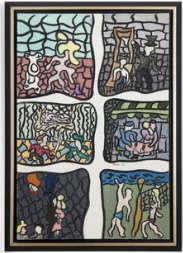
[View detail](#)



**Saint Clair Cemin**  
*Love and Mathematics*, 2014  
stainless steel  
76 x 50 x 29 inches  
193 x 127 x 73.7 cm  
Edition of 3 + 1 AP (#3/3)  
(PKE 18649)

[View detail](#)

\$ 250,000.00



**William N. Copley**  
Untitled, 1956  
oil on canvas  
31 7/8 x 21 1/4 inches  
81 x 54 cm  
(PK 22209)

[View detail](#)

\$ 165,000.00



**Ian Davenport**  
*La Mer (After Bonnard)*, 2018  
acrylic on aluminum mounted onto aluminum panel (with  
additional floor section)  
118 1/8 x 118 1/8 x 39 3/8 inches  
300 x 300 x 100 cm  
(PK 24748)

[View detail](#)

\$ 200,000.00



**Max Ernst**  
*Le Génie de la Bastille, Huismes*, 1960  
bronze with black patina  
122 x 22 7/8 x 13 inches  
309.9 x 57.9 x 33 cm  
inscribed and dated 'max ernst 2/5' and 'Susse Fondeur Paris  
2006'  
(PKE 18140)

[View detail](#)

\$ 1,400,000.00



**Max Ernst**  
*Lettrine D*, 1958  
pen, ink and collage on paper  
4 1/4 x 4 1/4 inches  
10.8 x 10.8 cm  
10 x 10 x 1 1/4 inches, framed  
25.4 x 25.4 x 3.2 cm  
(PK 25620)

[View detail](#)

\$ 15,000.00



**Barry Flanagan**

*Figure in the Trees*, 1993  
bronze  
70 x 36 1/2 x 26 1/2 inches  
177.8 x 92.7 x 67.3 cm  
Edition of 8 + 1 AP (#2/8)  
(PKE 6764)

[View detail](#)

\$ 325,000.00



**Jane Freilicher**

*Adirondack Landscape*, 1972  
oil on linen  
44 x 52 inches  
111.8 x 132.1 cm  
(PK 25526)

[View detail](#)

\$ 135,000.00



**Alison Hall**

*On the Borderline, IV*, 2020  
oil, graphite and plaster on panel  
9 1/2 x 7 1/2 inches  
24.1 x 19.1 cm  
(PK 26127)

[View detail](#)

\$ 2,000.00



**Robert Indiana**

*LOVE*, 1966-1996  
cor-ten steel  
24 x 24 inches  
61 x 61 cm  
Edition of 6 + 2 APs (AP 2/2)  
(PKE 24180)

[View detail](#)

\$ 575,000.00



**Alex Katz**

*Park Avenue Departure*, 2019  
porcelain enamel on shaped steel with steel core  
96 x 31 x 1 1/2 inches  
243.8 x 78.7 x 3.8 cm  
Edition of 6 + 2 APs (#1/6)  
(PKE 25483)

[View detail](#)

\$ 350,000.00



**Claude Lalanne**  
*Lapin Debout I*, 2012  
bronze  
12 x 5 x 7 inches  
30.5 x 12.7 x 17.8 cm  
Unique (#1/1)  
(PKX 12061)

[View detail](#)

\$ 385,000.00



**Matvey Levenstein**  
*Evening*, 2020  
oil on copper  
16 x 12 inches  
40.6 x 30.5 cm  
(PK 25718)

[View detail](#)

\$ 24,000.00



**Robert Motherwell**  
Untitled, 1973  
pasted papers on paper  
38 x 26 inches  
96.5 x 66 cm  
(PK 21991)

[View detail](#)

\$ 275,000.00



**James Nares**  
*Broome*, 2019  
22k gold leaf on Evolon  
55 1/4 x 48 3/4 x 2 1/2 inches  
140.3 x 123.8 x 6.3 cm  
(PK 25358)

[View detail](#)

\$ 85,000.00



**James Nares**  
*Where I Been*, 2008  
oil on linen  
80 1/4 x 30 1/2 inches  
203.8 x 77.5 cm  
(PK 11670)

[View detail](#)

\$ 110,000.00



**Roxy Paine**  
*Caption*, 2017  
stainless steel  
63 1/2 x 33 x 29 1/2 inches  
161.3 x 83.8 x 74.9 cm  
(PK 23446)

[View detail](#)

\$ 275,000.00





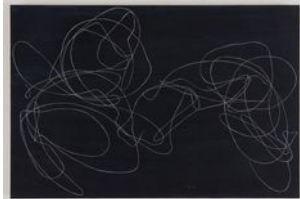
**Robert Polidori**

[View detail](#)

*L'Orangerie interior, green carpet #1, Château de Versailles, France, 2007*

fujicolor crystal archive print mounted to dibond  
50 x 60 inches  
127 x 152.4 cm  
Edition of 10 + 2 APs (#1/10)  
(PKE 24787)

\$ 30,000.00



**Elliott Puckette**

[View detail](#)

Untitled, 2018  
signed and dated 'Elliott Puckette 2018' (verso)  
gesso, kaolin and ink on board  
24 x 36 inches  
61 x 91.4 cm  
(PK 25590)

\$ 45,000.00



**Mark Ryden**

[View detail](#)

Untitled, 2011  
graphite on paper  
16 x 12 1/2 inches  
40.6 x 31.8 cm  
23 3/4 x 20 1/2 x 1, framed  
60.3 x 52.1 x 2.5 cm  
(PK 15214)



**Jan-Ole Schiemann**

[View detail](#)

*Kavex 6, 2019*  
oil stick, charcoal, ink and acrylic on canvas  
43 1/4 x 35 3/8 inches  
110 x 90 cm  
(PK 25087)

\$ 20,000.00



**Joel Shapiro**

[View detail](#)

Untitled, 2014  
bronze  
120 x 100 x 50 inches  
304.8 x 254 x 127 cm  
Edition of 2 + 1 AP (#2/2)  
(PKE 24661)

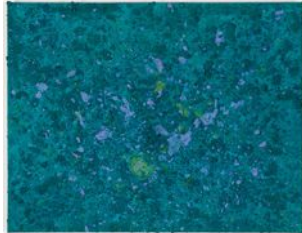
\$ 750,000.00



**Bosco Sodi**  
Untitled, 2017  
clay cubes  
59 x 14 3/4 x 14 3/4 inches  
150 x 37.5 x 37.5 cm  
(PK 23737)

[View detail](#)

\$ 55,000.00



**Bosco Sodi**  
Untitled, 2019  
mixed media on canvas  
55 1/8 x 70 7/8 inches  
140 x 180 cm  
(PK 25698)

[View detail](#)

\$ 75,000.00



**Keith Sonnier**  
*Sel Ger*, 1978  
neon, wire, transformer  
83 x 51 x 3 inches  
210.8 x 129.5 x 7.6 cm  
(PK 25530)

[View detail](#)

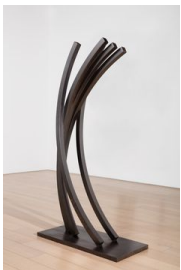
\$ 275,000.00



**Naama Tsabar**  
Untitled, 2015  
inkjet print  
35 3/8 x 24 inches  
90 x 60.88 cm  
Edition of 3 + 1 AP (#1/3)  
(PKE 24584)

[View detail](#)

\$ 4,500.00



**Bernar Venet**  
*86.5 Arc x 5*, 2017  
rolled steel with patina  
71 1/4 x 36 3/4 x 17 5/8 inches  
181 x 93.3 x 44.8 cm  
(PK 23313)

[View detail](#)

\$ 220,000.00



**Andy Warhol**  
*Unidentified Woman*, 1980  
silkscreen ink, diamond dust and synthetic polymer paint on  
canvas  
40 x 40 inches  
101.6 x 101.6 cm  
(PKX 9383)

[View detail](#)

\$ 675,000.00



**David Wiseman**

*Lost Valley Wall Mirror*, 2019

bronze and mirrored glass

77 x 48 x 8 inches

195.6 x 121.9 x 20.3 cm

Edition of 6 (#1/6)

(PKE 25840)

\$ 125,000.00

[View detail](#)

ALMA ALLEN  
*Not Yet Titled*, 2019



bronze  
35 3/8 x 16 7/8 x 15 3/4 inches  
90 x 43 x 40 cm  
(PK 25676)

\$ 35,000.00

Image 1/4



Image 2/4





Image 3/4



Image 4/4



ALI BANISADR  
*Nocturne*, 2019



hand-coloured aquatint with photogravure, spitbite, drypoint, and burnishing on Hahnemuhle Copperplate Bright White 300 gsm paper

19 1/8 x 25 inches, image

48.3 x 63.5 cm

26 3/4 x 31 1/2 inches, paper

68 x 80 cm

Edition of 25

(PKE 25642)

\$ 7,000.00



TINA BARNEY

*Family Commission with Snake, 2007*



chromogenic color print

48 x 60 inches

121.9 x 152.4 cm

Edition of 10 (#2/10)

(PKE 25545)

\$ 35,000.00

SAINT CLAIR CEMIN  
*Love and Mathematics*, 2014



stainless steel  
76 x 50 x 29 inches  
193 x 127 x 73.7 cm  
Edition of 3 + 1 AP (#3/3)  
(PKE 18649)

\$ 250,000.00

WILLIAM N. COPLEY  
*Untitled*, 1956



oil on canvas  
31 7/8 x 21 1/4 inches  
81 x 54 cm  
(PK 22209)

\$ 165,000.00



IAN DAVENPORT  
*La Mer (After Bonnard)*, 2018



acrylic on aluminum mounted onto aluminum panel (with additional floor section)  
118 1/8 x 118 1/8 x 39 3/8 inches  
300 x 300 x 100 cm  
(PK 24748)

\$ 200,000.00

Image 1/2



Image 2/2

MAX ERNST

*Le Génie de la Bastille, Huismes, 1960*



bronze with black patina

122 x 22 7/8 x 13 inches

309.9 x 57.9 x 33 cm

inscribed and dated 'max ernst 2/5' and 'Susse Fondeur Paris 2006'  
(PKE 18140)

\$ 1,400,000.00

Image 1/22





Image 2/22



Image 3/22



Image 4/22



Image 5/22



Image 6/22



Image 7/22



Image 8/22





Image 9/22



Image 10/22



Image 11/22



Image 12/22



Image 13/22



Image 14/22

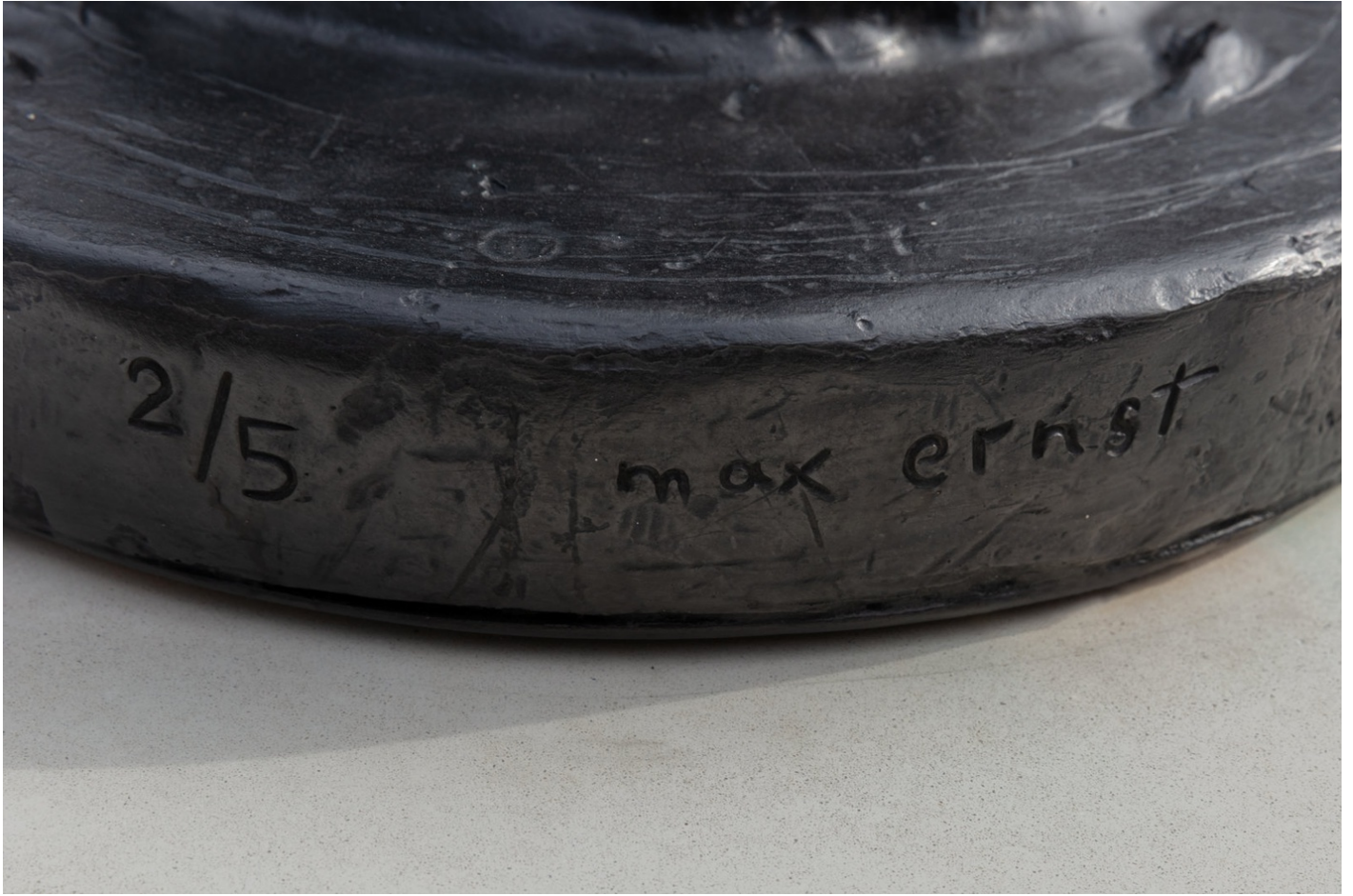


Image 15/22





Image 16/22



Image 17/22



Image 18/22





Image 19/22



Image 20/22





Image 21/22



Image 22/22

MAX ERNST  
*Lettrine D*, 1958



pen, ink and collage on paper  
4 1/4 x 4 1/4 inches  
10.8 x 10.8 cm  
10 x 10 x 1 1/4 inches, framed  
25.4 x 25.4 x 3.2 cm  
(PK 25620)

\$ 15,000.00

Image 1/3





Image 2/3



Image 3/3



BARRY FLANAGAN  
*Figure in the Trees*, 1993



bronze  
70 x 36 1/2 x 26 1/2 inches  
177.8 x 92.7 x 67.3 cm  
Edition of 8 + 1 AP (#2/8)  
(PKE 6764)

\$ 325,000.00

Image 1/6



Image 2/6



Image 3/6



Image 4/6



Image 5/6





Image 6/6

JANE FREILICHER  
*Adirondack Landscape*, 1972



oil on linen  
44 x 52 inches  
111.8 x 132.1 cm  
(PK 25526)

\$ 135,000.00

Image 1/8



Image 2/8



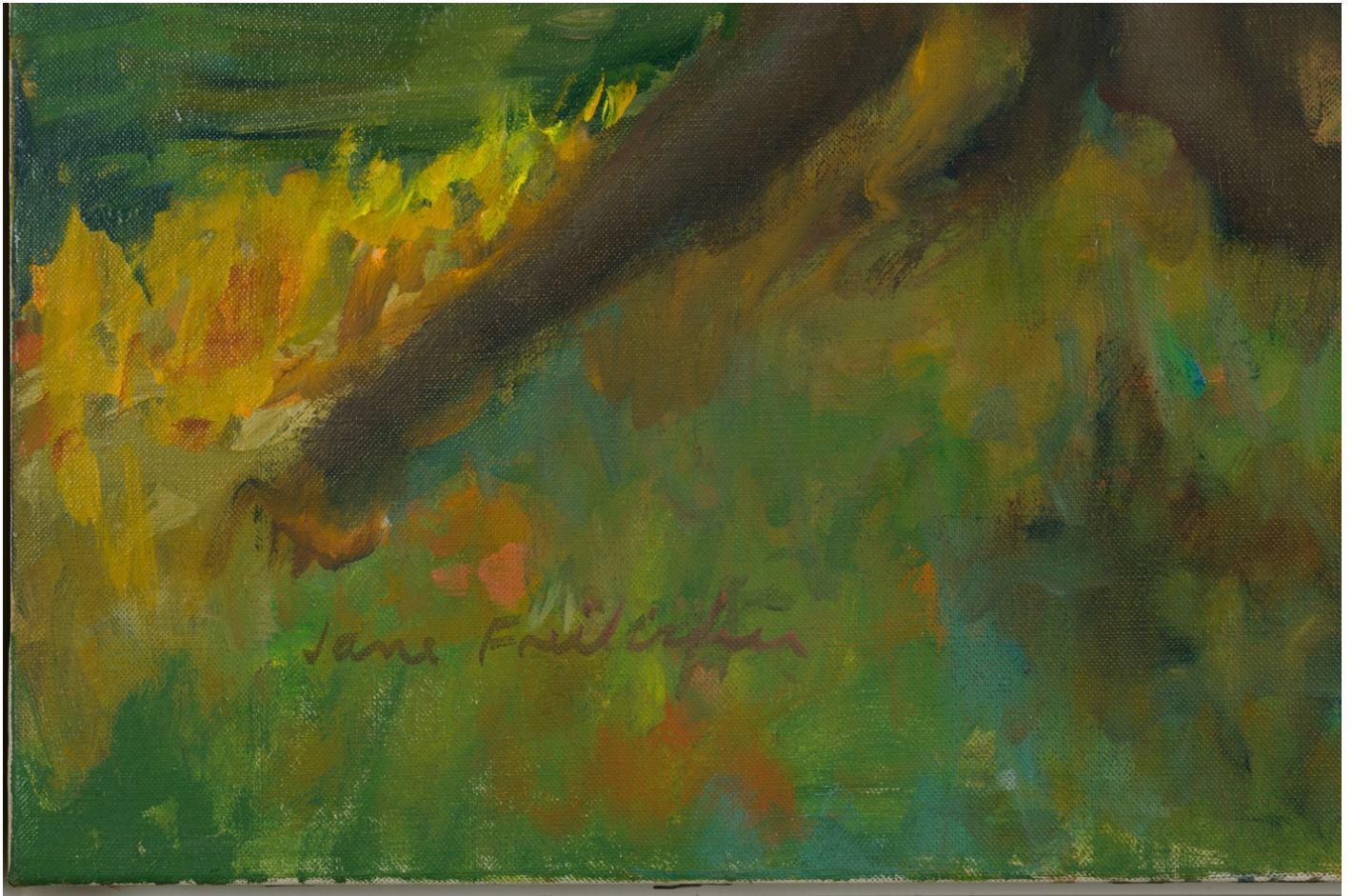


Image 3/8



Image 4/8





Image 5/8

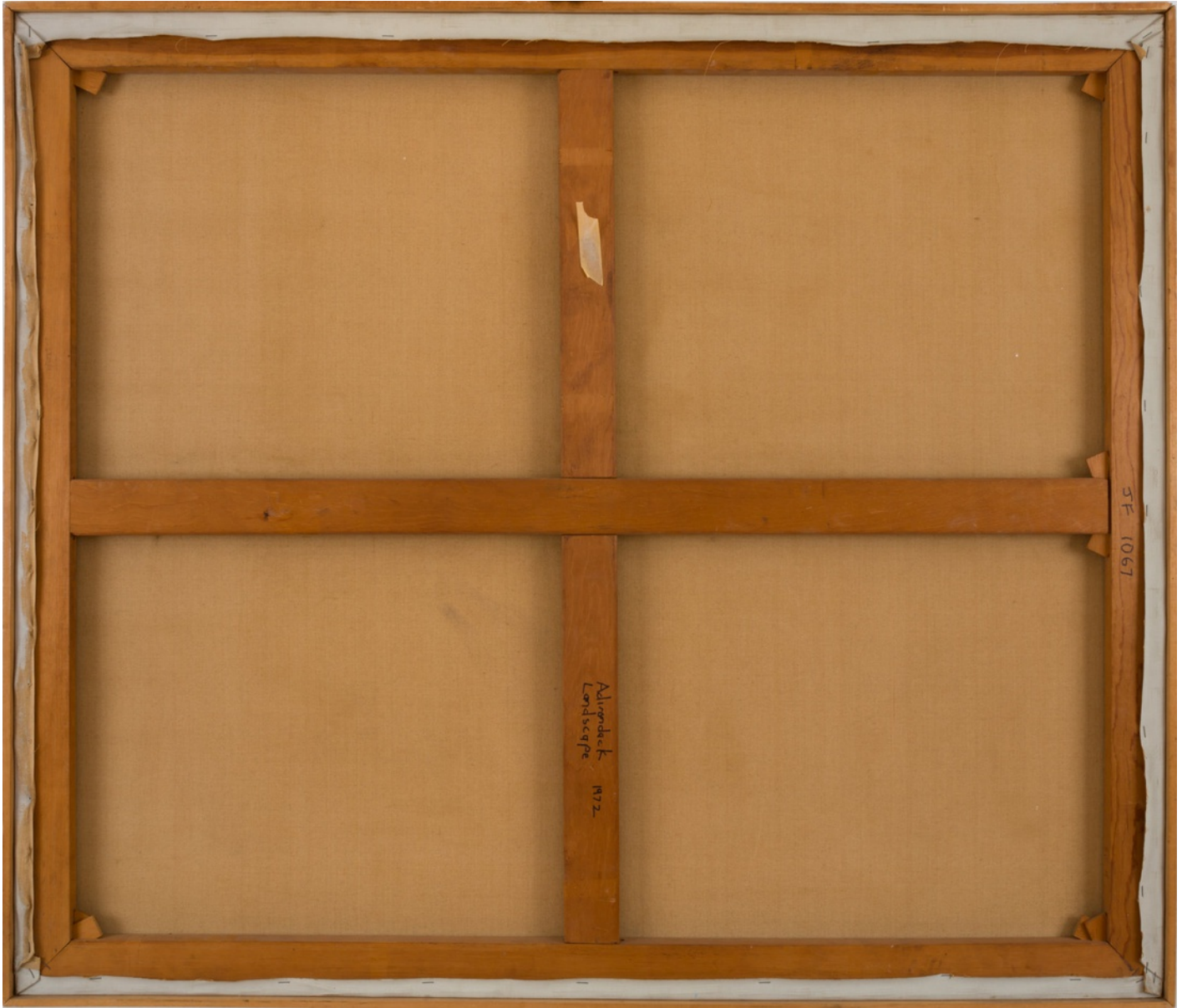


Image 6/8



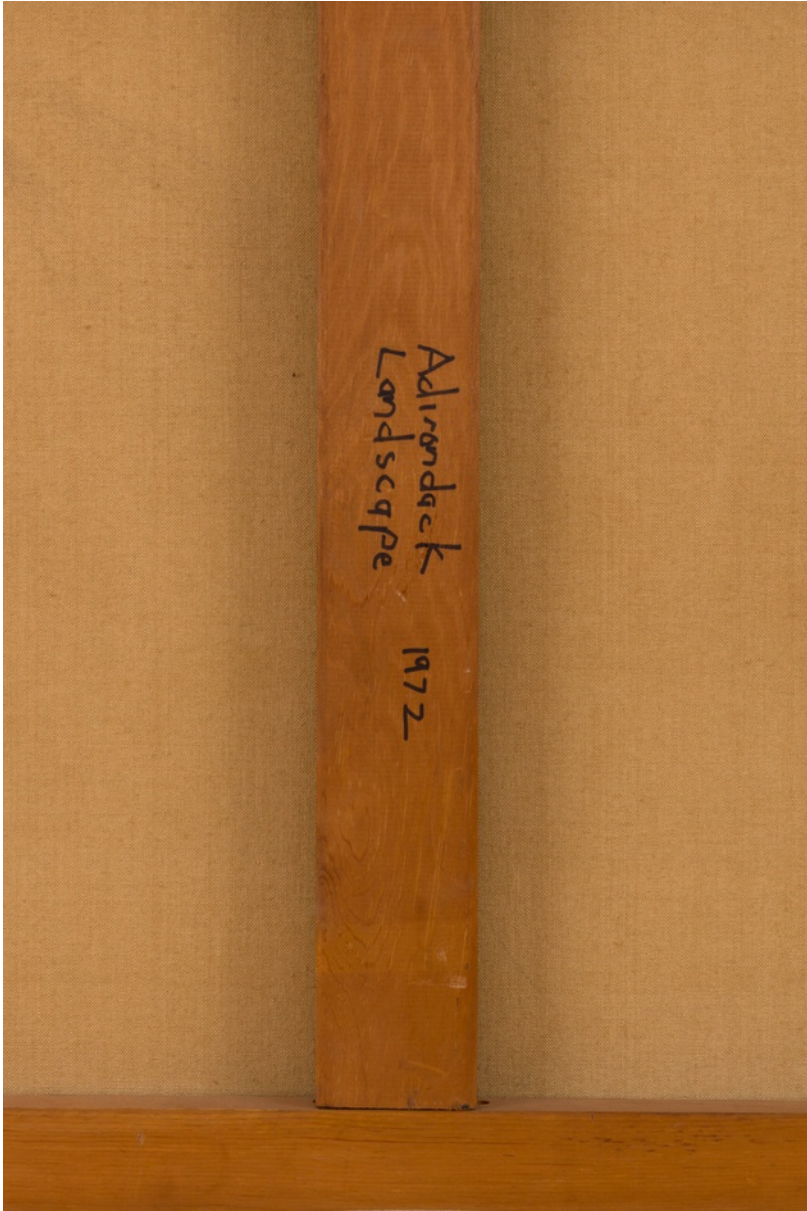


Image 7/8



Image 8/8

ALISON HALL  
*On the Borderline, IV*, 2020



oil, graphite and plaster on panel  
9 1/2 x 7 1/2 inches  
24.1 x 19.1 cm  
(PK 26127)

\$ 2,000.00



ROBERT INDIANA  
LOVE, 1966-1996



cor-ten steel  
24 x 24 inches  
61 x 61 cm  
Edition of 6 + 2 APs (AP 2/2)  
(PKE 24180)

\$ 575,000.00

Image 1/3



Image 2/3



Image 3/3

ALEX KATZ  
*Park Avenue Departure*, 2019



porcelain enamel on shaped steel with steel core  
96 x 31 x 1 1/2 inches  
243.8 x 78.7 x 3.8 cm  
Edition of 6 + 2 APs (#1/6)  
(PKE 25483)

\$ 350,000.00

Image 1/3



Image 2/3





Image 3/3

CLAUDE LALANNE  
*Lapin Debout I*, 2012



bronze  
12 x 5 x 7 inches  
30.5 x 12.7 x 17.8 cm  
Unique (#1/1)  
(PKX 12061)

\$ 385,000.00

Image 1/7



Image 2/7



Image 3/7





Image 4/7



Image 5/7



Image 6/7



Image 7/7



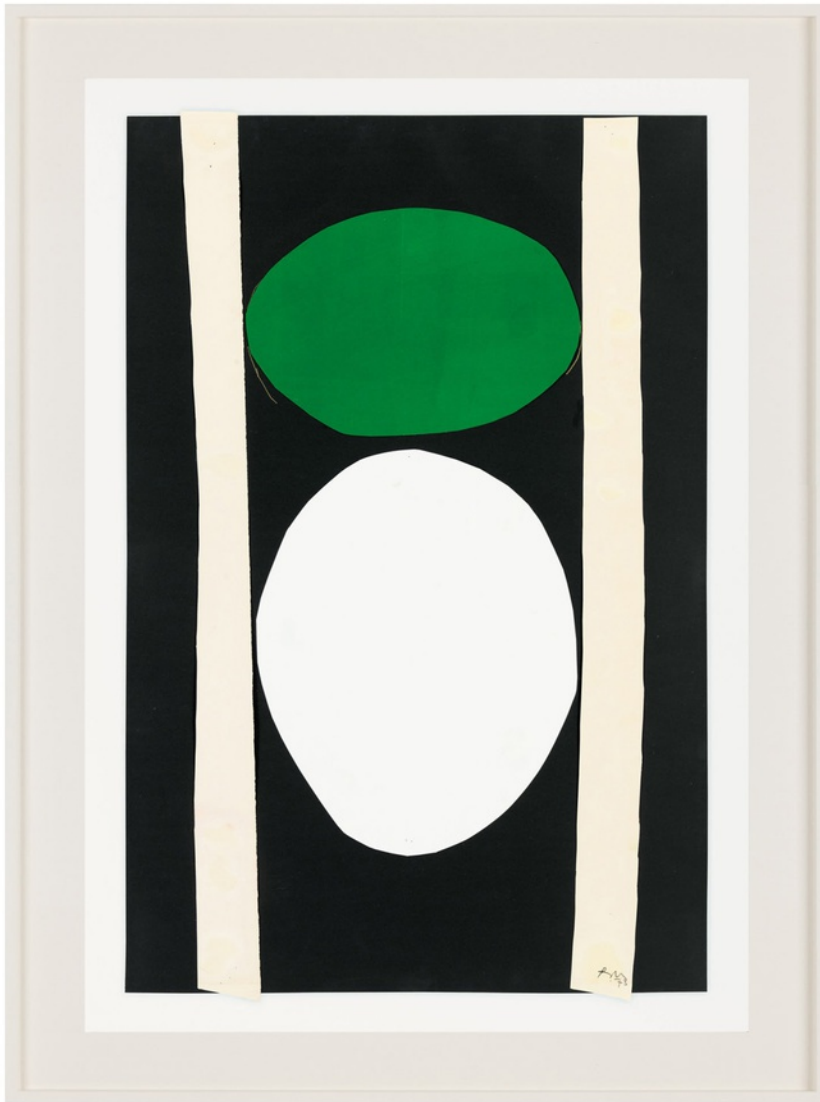
MATVEY LEVENSTEIN  
*Evening, 2020*



oil on copper  
16 x 12 inches  
40.6 x 30.5 cm  
(PK 25718)

\$ 24,000.00

ROBERT MOTHERWELL  
*Untitled*, 1973



pasted papers on paper  
38 x 26 inches  
96.5 x 66 cm  
(PK 21991)

\$ 275,000.00

Image 1/3

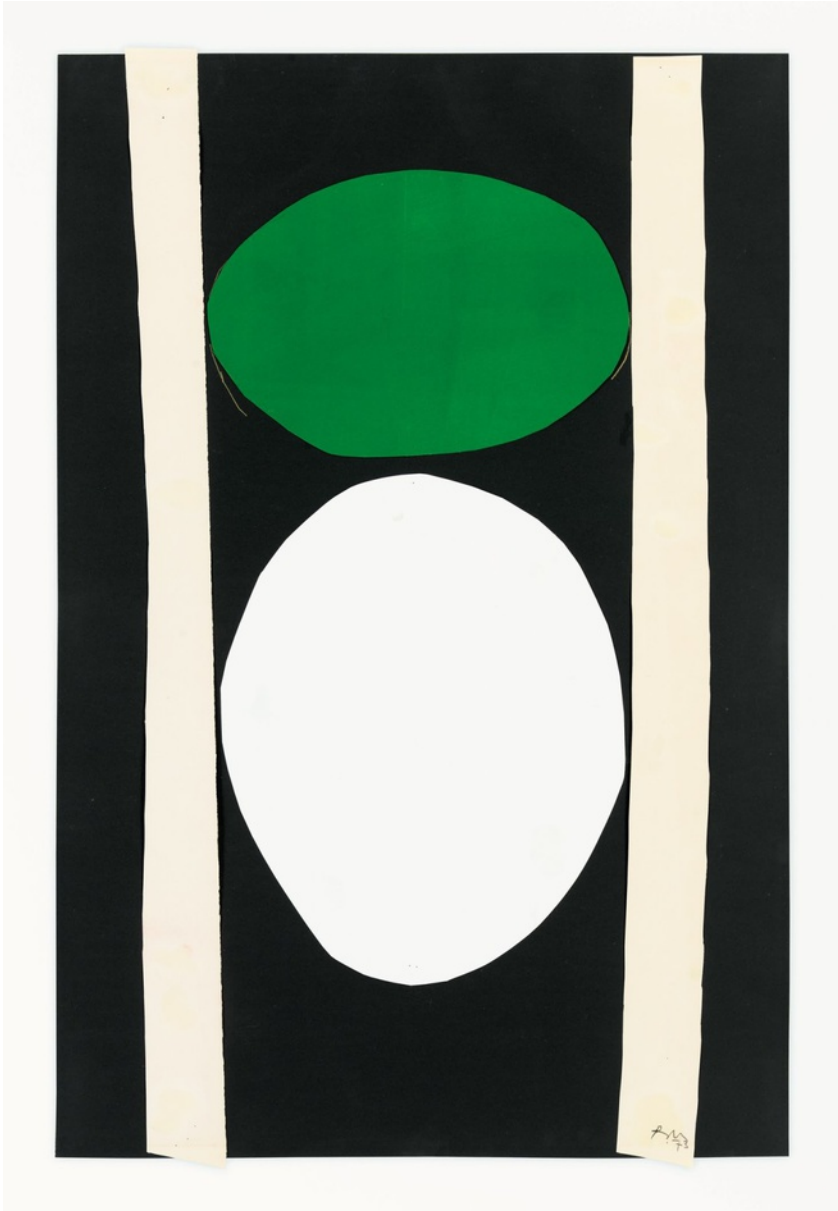


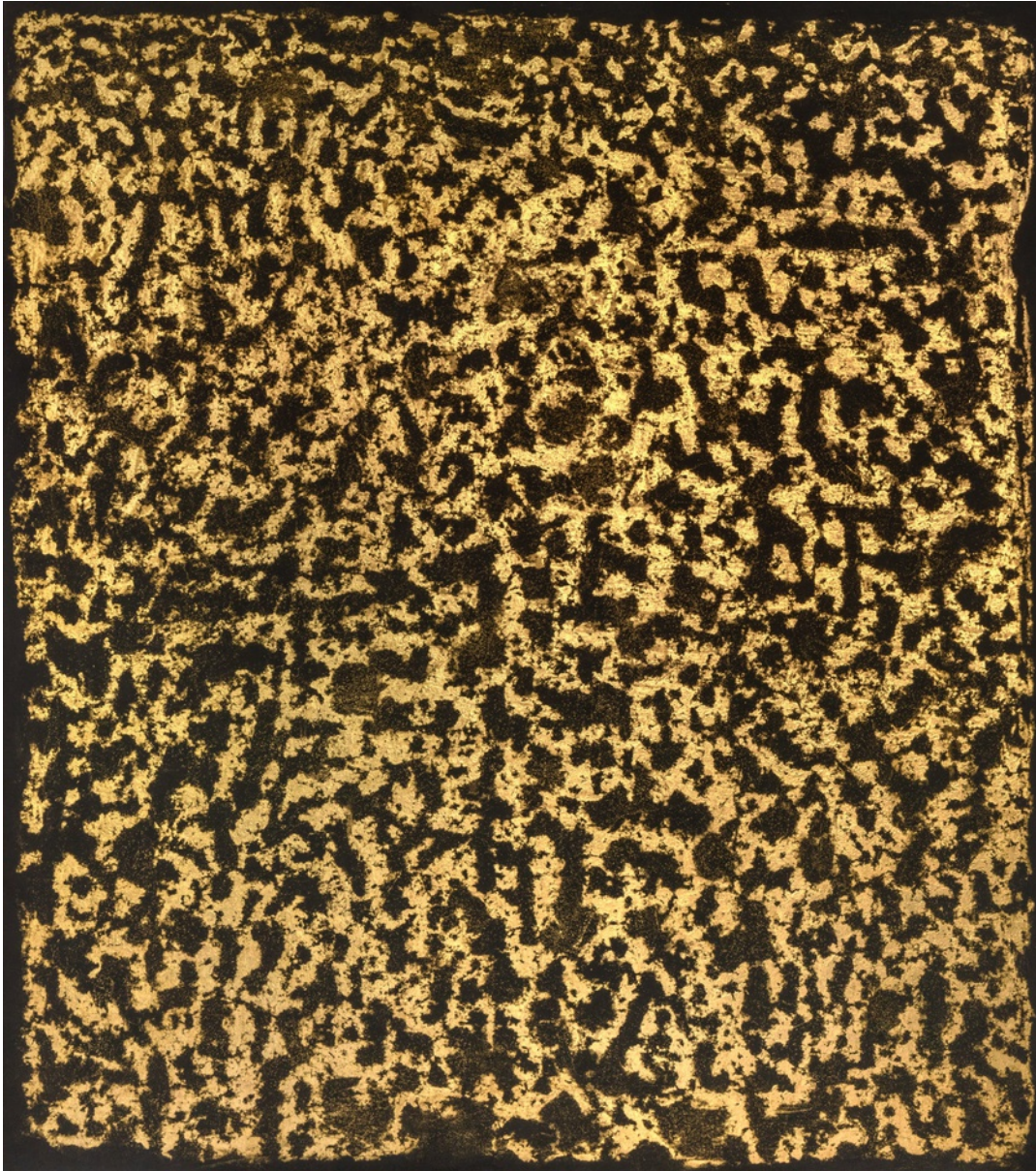
Image 2/3



Image 3/3



JAMES NARES  
*Broome*, 2019



22k gold leaf on Evolon  
55 1/4 x 48 3/4 x 2 1/2 inches  
140.3 x 123.8 x 6.3 cm  
(PK 25358)

\$ 85,000.00

JAMES NARES  
*Where I Been*, 2008



oil on linen  
80 1/4 x 30 1/2 inches  
203.8 x 77.5 cm  
(PK 11670)

\$ 110,000.00

Image 1/5



Image 2/5



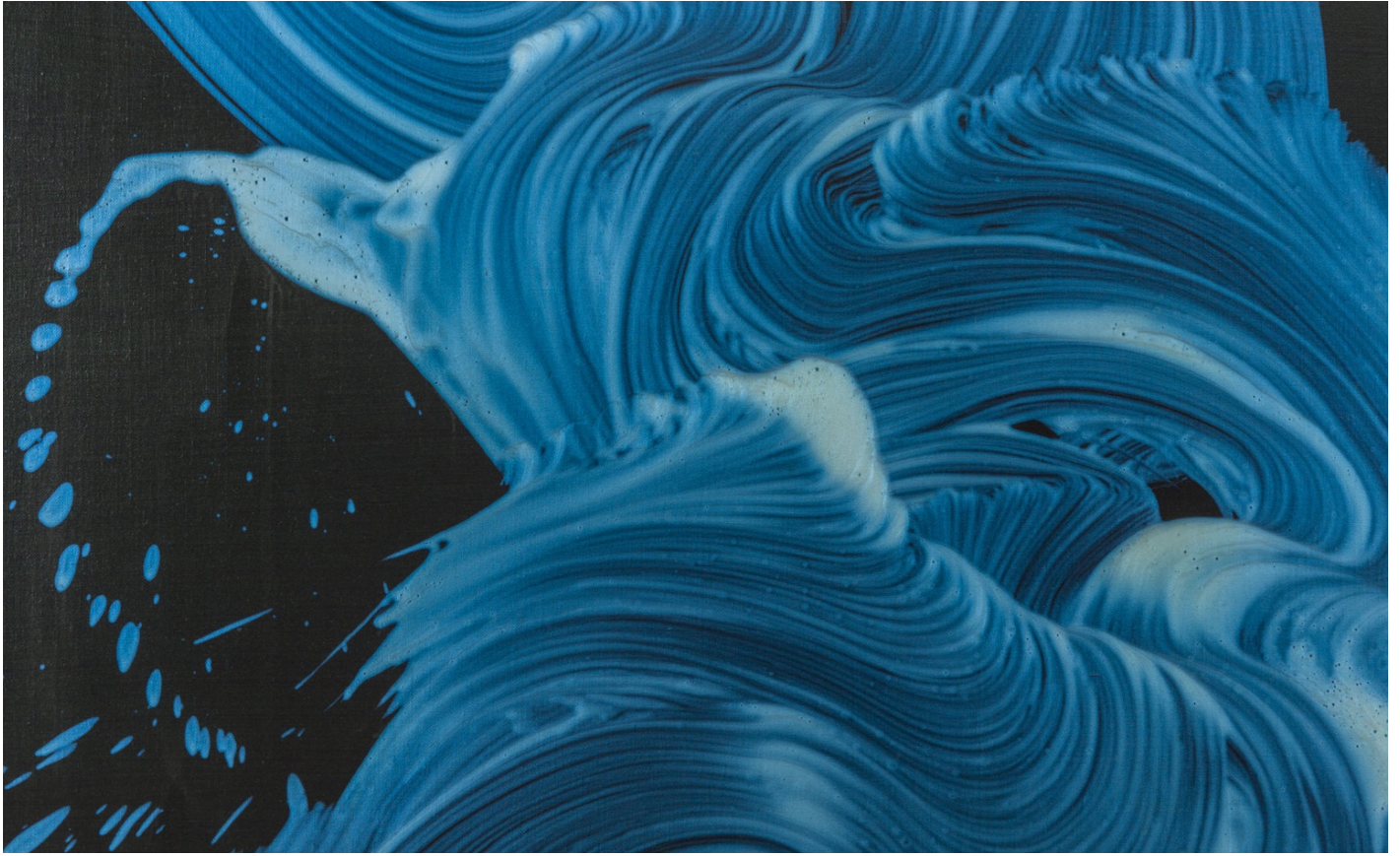


Image 3/5



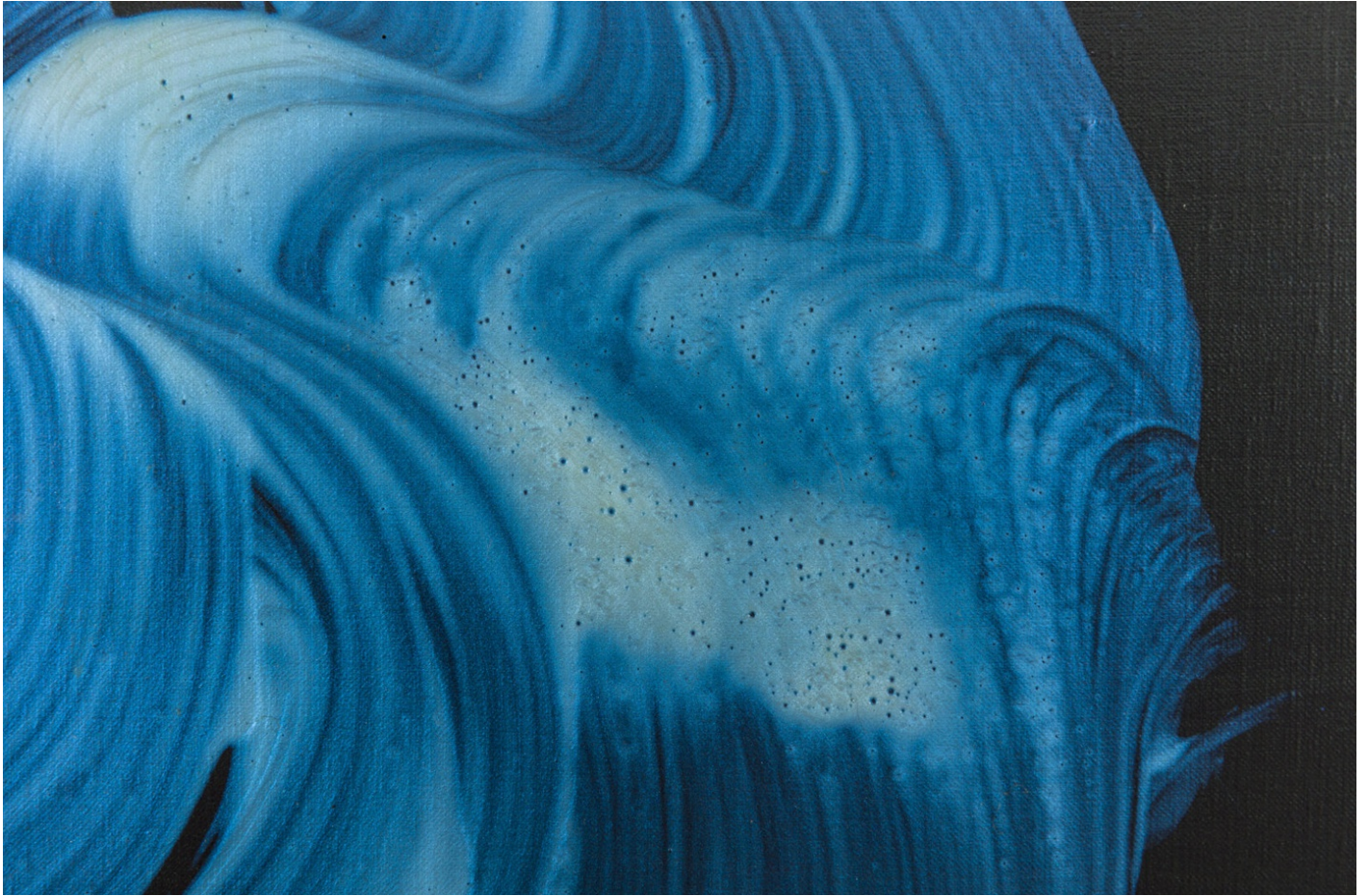


Image 4/5



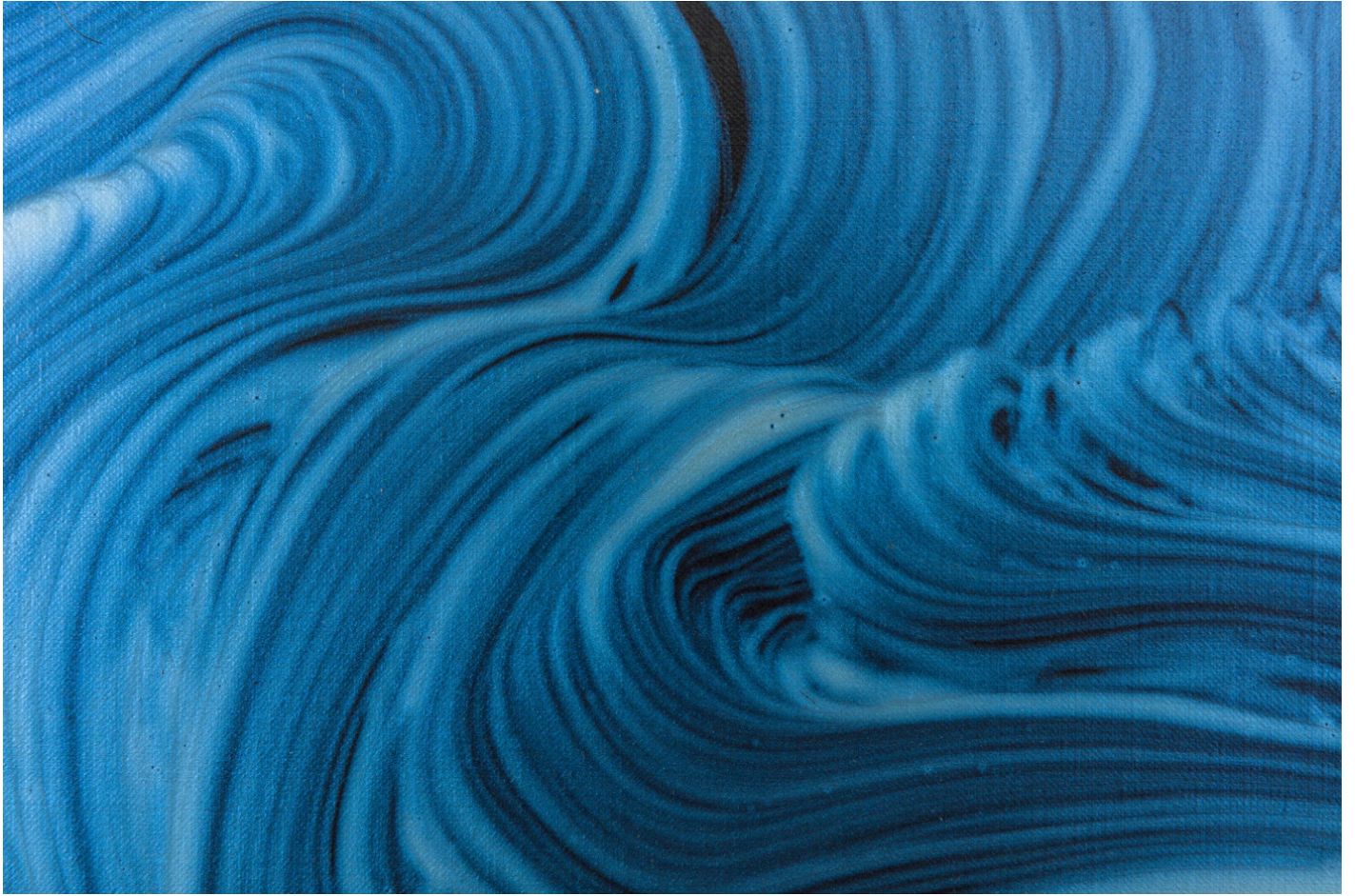


Image 5/5

ROXY PAINE  
*Caption*, 2017



stainless steel  
63 1/2 x 33 x 29 1/2 inches  
161.3 x 83.8 x 74.9 cm  
(PK 23446)

\$ 275,000.00

Image 1/5



Image 2/5





Image 3/5



Image 4/5



Image 5/5

ROBERT POLIDORI

*L'Orangerie interior, green carpet #1, Château de Versailles, France, 2007*



fujicolor crystal archive print mounted to dibond

50 x 60 inches

127 x 152.4 cm

Edition of 10 + 2 APs (#1/10)

(PKE 24787)

\$ 30,000.00



ELLIOTT PUCKETTE

*Untitled*, 2018



signed and dated 'Elliott Puckette 2018' (verso)

gesso, kaolin and ink on board

24 x 36 inches

61 x 91.4 cm

(PK 25590)

\$ 45,000.00

Image 1/6



Image 2/6



Image 3/6

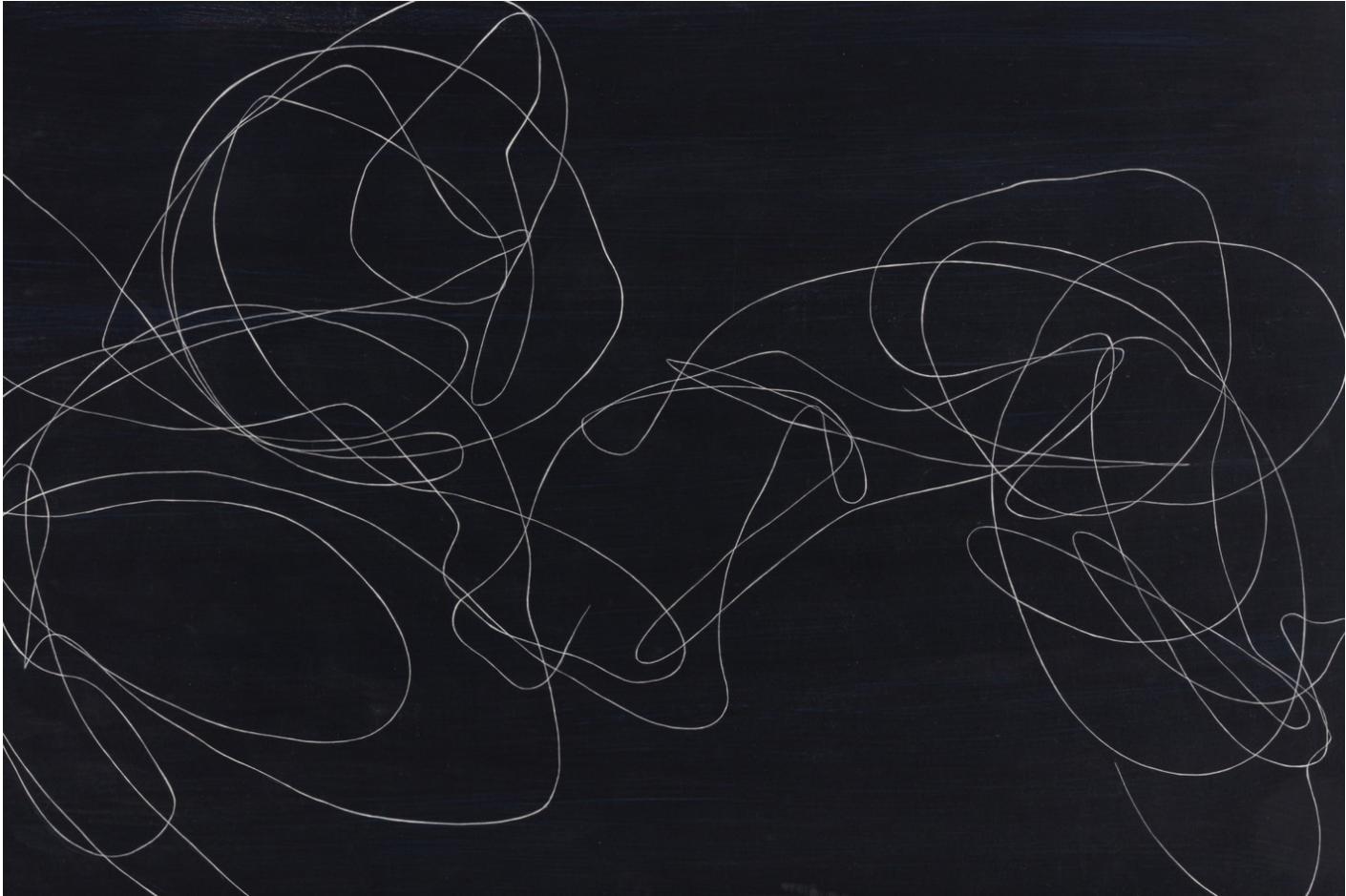


Image 4/6



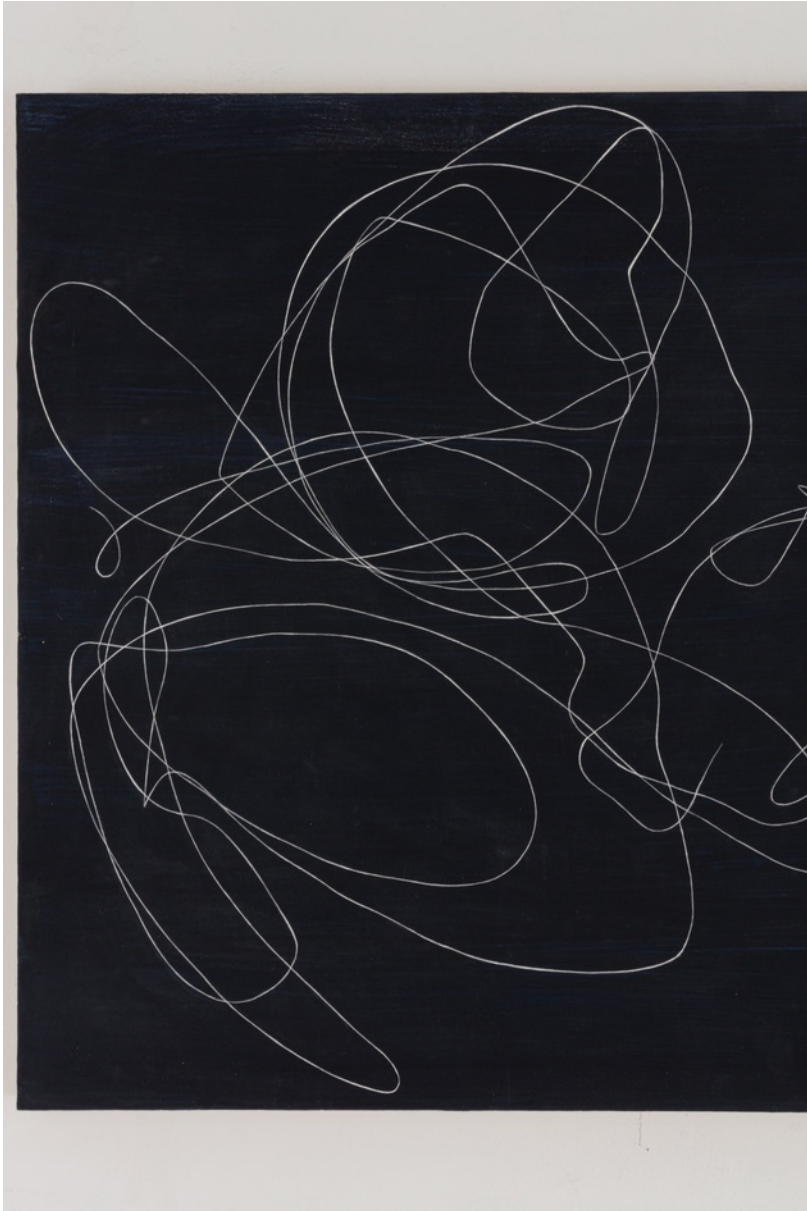


Image 5/6



Image 6/6

MARK RYDEN  
*Untitled*, 2011



graphite on paper  
16 x 12 1/2 inches  
40.6 x 31.8 cm  
23 3/4 x 20 1/2 x1, framed  
60.3 x 52.1 x 2.5 cm  
(PK 15214)

Image 1/2





Image 2/2



JAN-OLE SCHIEMANN  
Kavex 6, 2019



oil stick, charcoal, ink and acrylic on canvas

43 1/4 x 35 3/8 inches

110 x 90 cm

(PK 25087)

\$ 20,000.00

JOEL SHAPIRO  
*Untitled*, 2014



bronze  
120 x 100 x 50 inches  
304.8 x 254 x 127 cm  
Edition of 2 + 1 AP (#2/2)  
(PKE 24661)

\$ 750,000.00

Image 1/8



Image 2/8



Image 3/8





Image 4/8



Image 5/8



Image 6/8



Image 7/8





Image 8/8

BOSCO SODI  
*Untitled*, 2017



clay cubes  
59 x 14 3/4 x 14 3/4 inches  
150 x 37.5 x 37.5 cm  
(PK 23737)

\$ 55,000.00

Image 1/8



Image 2/8



Image 3/8





Image 4/8



Image 5/8



Image 6/8



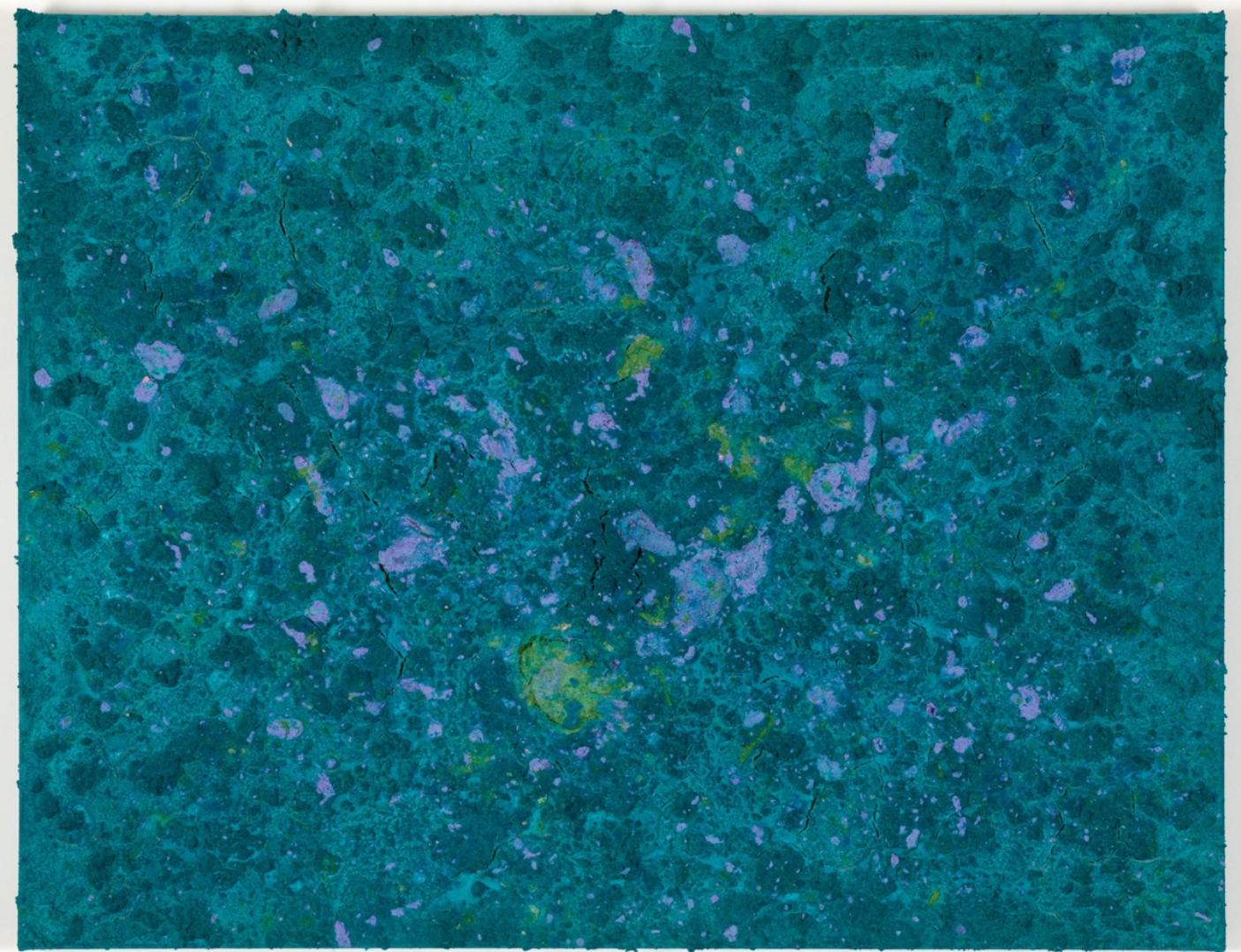
Image 7/8





Image 8/8

BOSCO SODI  
*Untitled*, 2019



mixed media on canvas  
55 1/8 x 70 7/8 inches  
140 x 180 cm  
(PK 25698)

\$ 75,000.00

KEITH SONNIER  
*Sel Ger*, 1978



neon, wire, transformer  
83 x 51 x 3 inches  
210.8 x 129.5 x 7.6 cm  
(PK 25530)

\$ 275,000.00



NAAMA TSABAR  
*Untitled*, 2015



inkjet print  
35 3/8 x 24 inches  
90 x 60.88 cm  
Edition of 3 + 1 AP (#1/3)  
(PKE 24584)

\$ 4,500.00



BERNAR VENET  
86.5° Arc x 5, 2017



rolled steel with patina  
71 1/4 x 36 3/4 x 17 5/8 inches  
181 x 93.3 x 44.8 cm  
(PK 23313)

\$ 220,000.00

Image 1/6



Image 2/6



Image 3/6



Image 4/6





Image 5/6



Image 6/6

ANDY WARHOL  
*Unidentified Woman*, 1980



silk screen ink, diamond dust and synthetic polymer paint on canvas  
40 x 40 inches  
101.6 x 101.6 cm  
(PKX 9383)

\$ 675,000.00

Image 1/4

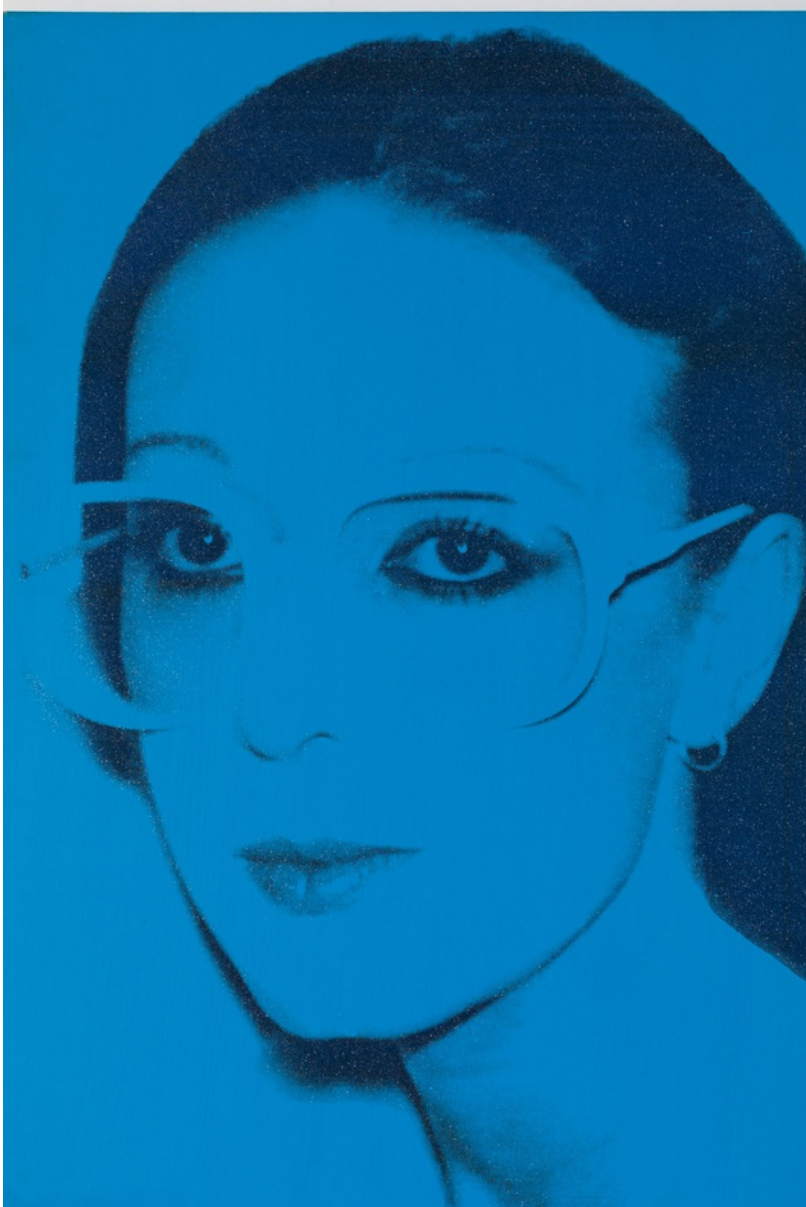


Image 2/4



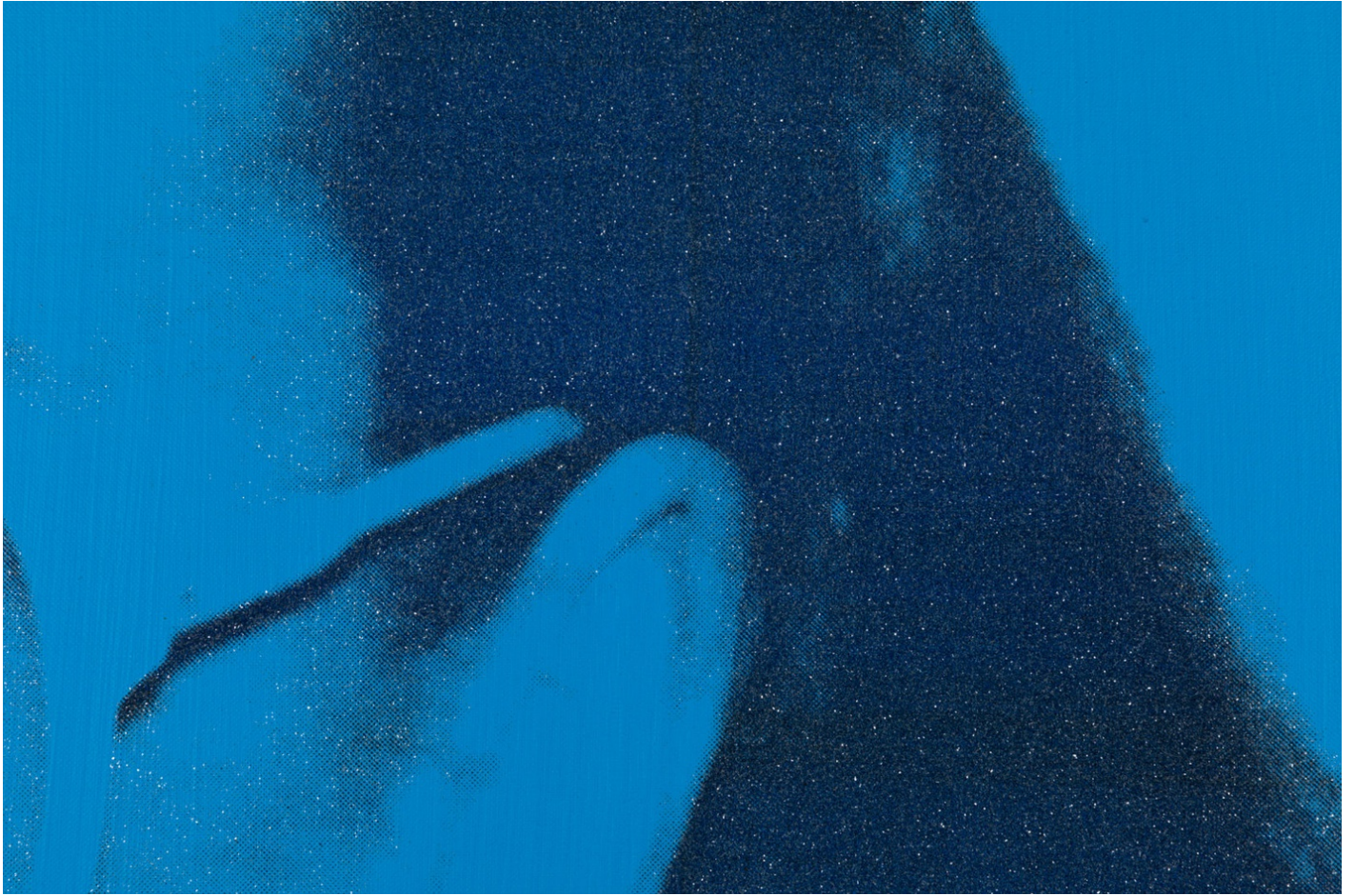


Image 3/4



Image 4/4



DAVID WISEMAN  
*Lost Valley Wall Mirror*, 2019



bronze and mirrored glass  
77 x 48 x 8 inches  
195.6 x 121.9 x 20.3 cm  
Edition of 6 (#1/6)  
(PKE 25840)

\$ 125,000.00

To register for access to the online viewing rooms,  
please visit [dallasartfair.com](http://dallasartfair.com).

For more information, please contact [info@kasmingallery.com](mailto:info@kasmingallery.com).

For press requests, please contact [press@kasmingallery.com](mailto:press@kasmingallery.com).