

MICHAEL HOPPEN GALLERY

PRIVATE VIEW

MICHAEL HOPPEN GALLERY | STAND W2

For all enquiries: gallery@michaelhoppengallery.com

For full details and larger images, please see the end of this document.



Nobuyoshi Araki

Hana Jinsei, 2002

Accompanied by a signed artist label

Fuji Crystal archive print

Printed 2022

Image size: 68 x 102.3 cm

Frame size: 72 x 105 cm

From an edition of 10

(29796-NAR)

[View detail](#)



Peter Beard

Karen Blixen, December 3rd 1961 (Giant Polaroid day), 1997

Signed and dated recto in ink

Archive number and wet stamp verso

Large Polaroid with ink, chemistry, feather and writing

Paper size: 90 x 55.7cm

Frame size: 105.5 x 82 cm

(28661-PEB)

[View detail](#)



Bill Brandt

Children's Party, 1936

Signed in margin in ink recto

Silver gelatin print

Printed 1970-83

Paper size: 40 x 30 cm

Frame size: 60 x 50 cm

[View detail](#)

(24731-BB)



Bill Brandt

Northumbrian coal miner eating his evening meal, 1937

Signed in margin in ink recto
Silver gelatin print
Printed 1970-83
Paper size: 40 x 30 cm
Frame size: 60 x 50 cm

[View detail](#)

(24736-BB)



John Bulmer

Leeds, 1965

Signed, titled, and dated verso
Vintage Cibachrome print
Paper size: 40.5 x 30.5 cm
Image size: 39 x 26 cm
Frame size: 57.5 x 45.5 cm
(19458-JBU)

[View detail](#)



John Bulmer

Leeds, 1965

Signed, titled, and dated verso
Vintage Cibachrome print
Paper size: 40.5 x 30.5 cm
Image size: 39 x 26 cm
Frame size: 57.5 x 45.5 cm
(19459-JBU)

[View detail](#)



Tim Flach

Spix's Macaw, Rearview, Unextinct, 2022

Accompanied by a signed and editioned label and certificate from the artist
Fuji Crystal Archive Print Mounted to Dibond
Paper size: 151 x 122 cm
Frame size: 166 x 134.5 cm
(001-TFL)

[View detail](#)



Masahisa Fukase

Untitled, from Private Scenes, 1990-1991

Artist's estate wet stamp verso
Vintage hand-coloured silver gelatin print
Paper size: 35.4 x 42.9 cm
Frame size: 43 x 53 cm
(30034-MFK)

[View detail](#)



Masahisa Fukase

Untitled, from Private Scenes, 1990-1991

Artist's estate wet stamp verso
Vintage hand-coloured silver gelatin print
Paper size: 35.4 x 42.9 cm
Frame size: 43 x 53 cm
(30033-MFK)

[View detail](#)



Masahisa Fukase

Untitled, from the Solitude of Ravens, 1976-1986

Artist's estate wet stamp verso

Vintage silver gelatin print

Paper size: 23.9 x 30.4 cm

Image size: 19.4 x 28 cm

Frame size: 51 x 64 cm

(30024-MFK)

[View detail](#)



Masahisa Fukase

Untitled, from the Solitude of Ravens, 1976-1986

Artists estate wet stamp verso

Vintage silver gelatin print

Paper size: 23.9 x 30.2 cm

Frame size: 48 x 62 cm

(29912-MFK)

[View detail](#)



Ori Gersht

Fusing Time 04, 2022

Signed verso

Accompanied by a signed artist certificate

Archival pigment print

Image size: 145.5 x 111 cm

Frame size: 150.5 x 113.5 cm

Edition 4/6 + 2 APs

(2015-OGR)

[View detail](#)



Hiroshi Hamaya

Battledore Fair held on New Year's Day, Asakusa, Tokyo,

1939

Artist's wet stamp and annotations verso

Silver gelatin print, printed later

Paper size: 43 x 35.6 cm

Image size: 37 x 25 cm

Frame size: 57.5 x 45.5 cm

(29652-HH)

[View detail](#)



Hiroshi Hamaya

Snow season market, Tokamachi, Niigata, 1956

Artist's wet stamp and annotations verso

Silver gelatin print, printed later

Paper size: 55.8 x 45.8 cm

Image size: 47 x 32 cm

Frame size: 65.5 x 49 cm

(29639-HH)

[View detail](#)



Hiroshi Hamaya

Girl carrying baby in a mountain village, Ohira, Aomori, 1955

Artist's wet stamp and annotations verso

Silver gelatin print, printed later

Paper size: 20.1 x 30.3 cm

Image size: 16 x 24 cm

Frame size: 38 x 43.5 cm

(29644-HH)

[View detail](#)



Eikoh Hosoe

Kamaitachi #39, 1968

Initialed in ink recto

Signed, titled and dated in pencil verso

Silver gelatin print, printed later

Image size: 55.5 x 36.6 cm

Paper size: 50.6 x 61.2 cm

Frame size: 66 x 85.5 cm

(28084-EIH)

[View detail](#)



Tetsuya Ichimura

Untitled, from Come Up, c.1970

Vintage silver gelatin print

Paper size: 20 x 25.4 cm

Image size: 15.7 x 22 cm

Frame size: 34 x 40 cm

(2027-TIC)

[View detail](#)



Ishiuchi Miyako

Yokosuka Again #17, 1981

Signed and dated by the artist verso

Vintage silver gelatin print

Printed 1988

Paper size: 25.5 x 31 cm

Image size: 19 x 30 cm

Frame size: 45.5 x 58 cm

(29599-MII)

[View detail](#)



Ishiuchi Miyako

Apartment, 1977-1978

Signed, titled, and dated by the artist verso

Vintage silver gelatin print

Printed 1978

Paper size: 20.5 x 25 cm

Frame size: 45.5 x 58 cm

(29592-MII)

[View detail](#)



Ishiuchi Miyako

Mother's #36, 2002

Accompanied by a signed and editoned label

C-type print

Image size: 28.5 x 19 cm

Frame size: 31 x 21.5 cm

Edition 4/15

(29614-MII)

[View detail](#)



Tiina Itkonen

Home 2, Kuummiut, 2015

Accompanied by signed artist label

Pigment print on Hahnemühle Photo Rag Ultra Smooth

Framed with museum glass

Image size: 60 x 85 cm

Frame size: 62 x 87 cm

[View detail](#)

Edition 4/7 + 2 APs

(26748-TITK)



Tiina Itkonen

Home 17, Isortoq, 2017

Accompanied by signed artist label

Pigment print on Hahnemühle Photo Rag Ultra Smooth

Framed with museum glass

Image size: 60 x 85 cm

Frame size: 62 x 87 cm

[View detail](#)

Edition 4/7 + 2 APs

(26751-TITK)



Tiina Itkonen

Home 12, Isortoq, 2017

Accompanied by signed artist label

Pigment print on Hahnemühle Photo Rag Ultra Smooth

Framed with museum glass

Image size: 60 x 85 cm

Frame size: 62 x 87 cm

[View detail](#)

Edition 4/7 + 2 APs

(26749-TITK)



Tiina Itkonen

Home 13, Qaanaaq, 2019

Accompanied by signed artist label

Pigment print on Hahnemühle Photo Rag Ultra Smooth

Framed with museum glass

Image size: 60 x 85 cm

Frame size: 62 x 87 cm

[View detail](#)

Edition 4/7 + 2 APs

(26750-TITK)



Colin Jones

Coal Merchants Shop, Benwell, Newcastle-upon-Tyne, 1963

Signed, titled and dated in pencil verso

Silver gelatin print

Paper size: 40.9 x 50.5 cm

Image size: 34.5 x 49 cm

Frame size: 52 x 67 cm

[View detail](#)

(1990-CJ)



Colin Jones

Jarrow, 1963

Signed and editioned in pencil verso

Silver gelatin print

Paper size: 40.6 x 50.8 cm

Frame size: 52 x 67 cm

Edition 3/25

(3000-CJ)

[View detail](#)



Colin Jones

The Black House, Satan Loves You, Holloway Road, London,
1973 -1976

Signed, titled and dated in pencil and with artist's wet stamp
verso

Artist's embossed stamp recto

Vintage silver gelatin print

Paper size: 50.7 x 40.9 cm

Frame size: 67 x 52 cm

[View detail](#)

(16351-CJ)



Colin Jones

The Black House, London, 1973-1976

Signed, titled and dated in pencil and with artist's wet stamp
verso

Artist's embossed stamp recto

Vintage silver gelatin print

Paper size: 50 x 40 cm

Frame size 52 x 67 cm

[View detail](#)

(16510-CJ)



Kikuji Kawada

The Mask, from Los Caprichos, 1976

Signed, titled, and dated verso

Vintage silver gelatin print

Printed 1976

Paper size: 30.5 x 25.4 cm

Frame size: 46 x 38.5 cm

(27998-KKA)

[View detail](#)



Kikuji Kawada

In Swimming Pool, Tokyo, Los Caprichos, 1978

Signed in English and Japanese, titled, dated and inscribed in
pencil and with artist's wet stamp verso

Vintage silver gelatin print, printed 1979

Paper size 40.8 x 50.7 cm

Image size: 25.9 x 38.9 cm

Frame size: 51.5 x 61.5 cm

(27979-KKA)

[View detail](#)



Sirkka-Liisa Konttinen

Children with Collected Junk, from Byker, 1971

Signed, titled, and dated in pencil verso

Silver gelatin print

Printed 2021

Paper size: 40.5 x 50.5 cm

Image size: 26 x 39 cm

Frame size: 45.5 x 58 cm

(29066-SLK)

[View detail](#)



Sirkka-Liisa Konttinen

Girl Playing a Piano in a Derelict House, Byker, 1971

Signed, dated, and titled in pencil verso

Silver gelatin print

Printed 2014

Paper size: 40.5 x 50.5 cm

image size: 26 x 39 cm

Frame size: 45.5 x 57.5 cm

(29047-SLK)

[View detail](#)



Seiji Kurata

Yakuza and Cat, 1978

Signed by Keiko Kurata, editioned, dated and with artist's estate wet stamp verso

Silver gelatin print, printed later

Paper size: 50 x 40 cm

Frame size: 75 x 64 cm

Edition 2/3

(27283-SEK)

[View detail](#)



Sarah Moon

L'inconnue, 2011

Titled, editioned, and signed verso

Artist's dry stamp recto

Toned silver gelatin print

Paper size: 60.1 x 50.2 cm

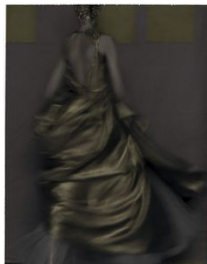
Image size: 55.5 x 45 cm

Frame size: 87 x 73.5 cm

Edition 13/20

(29779-SAM)

[View detail](#)



Sarah Moon

La Robe Dorée, 2021

Titled, editioned, and signed verso

Artist's dry stamp recto

Colour pigment print

Printed 2022

Paper size: 74 x 57 cm

Frame size: 86.5 x 71.5 cm

Edition 7/15

(29784-SAM)

[View detail](#)



Sarah Moon

Maria Grazia Chiuri, 2017

Signed, titled, and editioned verso

Platinum print

Paper size: 50 x 60 cm

Image size: 40 x 50 cm

Frame size: 74 x 87 cm

Edition 3/15

(29794-SAM)

[View detail](#)



Daido Moriyama

Poster: Koriyama City, 1989

Signed in pencil verso

Vintage silver gelatin print

Paper size: 35.4 x 27.8 cm

Image size: 29.8 x 21.5 cm

Frame size: 57.5 x 45.5 cm

(17804-DAM)

[View detail](#)



Daido Moriyama

Daido Hysteria No. 8, 1997

Signed in ink verso

Vintage silver gelatin print

Paper size: 30.4 x 25.3 cm

Image size: 29.6 x 23.7 cm

Frame size: 57.5 x 45.5 cm

(29672-DAM)

[View detail](#)



Daido Moriyama

Daido Hysteria No. 8, 1997

Signed in ink verso

Vintage silver gelatin print

Paper size: 30.4 x 25.3 cm

Image size: 29.4 x 24.3 cm

Frame size: 57.5 x 45.5 cm

(29673-DAM)

[View detail](#)



Daido Moriyama

Cabbage, 1989

Signed in pencil verso

Silver gelatin print, printed later

Paper size: 35.5 x 43 cm

Frame size: 45.5 x 57.5 cm

(23025-DAM)

[View detail](#)



Daido Moriyama

Provoke No. 2, 1969

Signed in Japanese and English verso

Silver gelatin print, printed later

Paper size: 45.8 x 56 cm

Frame size: 58 x 74 cm

(29654-DAM)

[View detail](#)



Deborah Turbeville

Italian Vogue, from series "Women of the Steam Bath," New York, NY, May 1984

Signed and with annotations verso

Silver gelatin print

Paper size: 28 x 35.5 cm

Frame size: 43 x 57 cm

(003-DT)

[View detail](#)



Tim Walker

Guinevere van Seenus, 20 mattresses and 1 hot water bottle, Fashion: Vivienne Westwood, Glemham Hall, Suffolk, England, 2006

Accompanied by a signed, titled and editioned label from the artist

Archival pigment print

Image size: 104.9 x 81.2 cm

Paper size: 129.5 x 106.6 cm

Frame size: 108.5 x 85 cm

Edition 4/10 + 2 APs

(30105-TIW)

[View detail](#)



Tim Walker

Box of Delights, James Spencer, London, 2018

Accompanied by a signed and editioned artist label

Archival pigment print on Hahnemühle Fine Art Pearl paper

Paper size: 116.6 x 87.6 cm

Frame size: 117.5 x 89 cm

Edition 1/10 + 2 APs

(30035-TIW)

[View detail](#)



Tim Walker

Lily Cole on old Vogue cover, London, 2004

Accompanied by a signed, titled and editioned label from the artist

C-type print

Paper size: 152.4 x 125.9 cm

Image size: 127 x 100.5 cm

Frame size: 130 x 104 cm

Edition 1/10 + 2 APs

(30092-TIW)

[View detail](#)



Tim Walker

Tilda Swinton, Fashion: Giorgio Armani, Las Pozas, Mexico, 2012

Accompanied by a signed, titled and editioned label from the artist

Archival pigment print

Image size: 90.2 x 125 cm

Paper size: 97.5 x 132.5 cm

Frame size: 100 x 135 cm

Edition 1/10 + 2 APs

(30096-TIW)

[View detail](#)



Harley Weir

Function, 2016

Accompanied by a signed and editioned artist label

C-type print

Image size: 82.5 x 68 cm

Frame size: 86.5 x 72 cm

Edition 1/7

(29798-HYW)

[View detail](#)

NOBUYOSHI ARAKI
Hana Jinsei, 2002



Accompanied by a signed artist label
Fuji Crystal archive print
Printed 2022
Image size: 68 x 102.3 cm
Frame size: 72 x 105 cm
From an edition of 10
(29796-NAR)

PETER BEARD

Karen Blixen, December 3rd 1961 (Giant Polaroid day), 1997



Signed and dated recto in ink
Archive number and wet stamp verso
Large Polaroid with ink, chemistry, feather and writing
Paper size: 90 x 55.7cm
Frame size: 105.5 x 82 cm
(28661-PEB)

Image 1/2



Image 2/2

BILL BRANDT
Children's Party, 1936



Signed in margin in ink recto

Silver gelatin print

Printed 1970-83

Paper size: 40 x 30 cm

Frame size: 60 x 50 cm

(24731-BB)

BILL BRANDT

Northumbrian coal miner eating his evening meal, 1937



Signed in margin in ink recto

Silver gelatin print

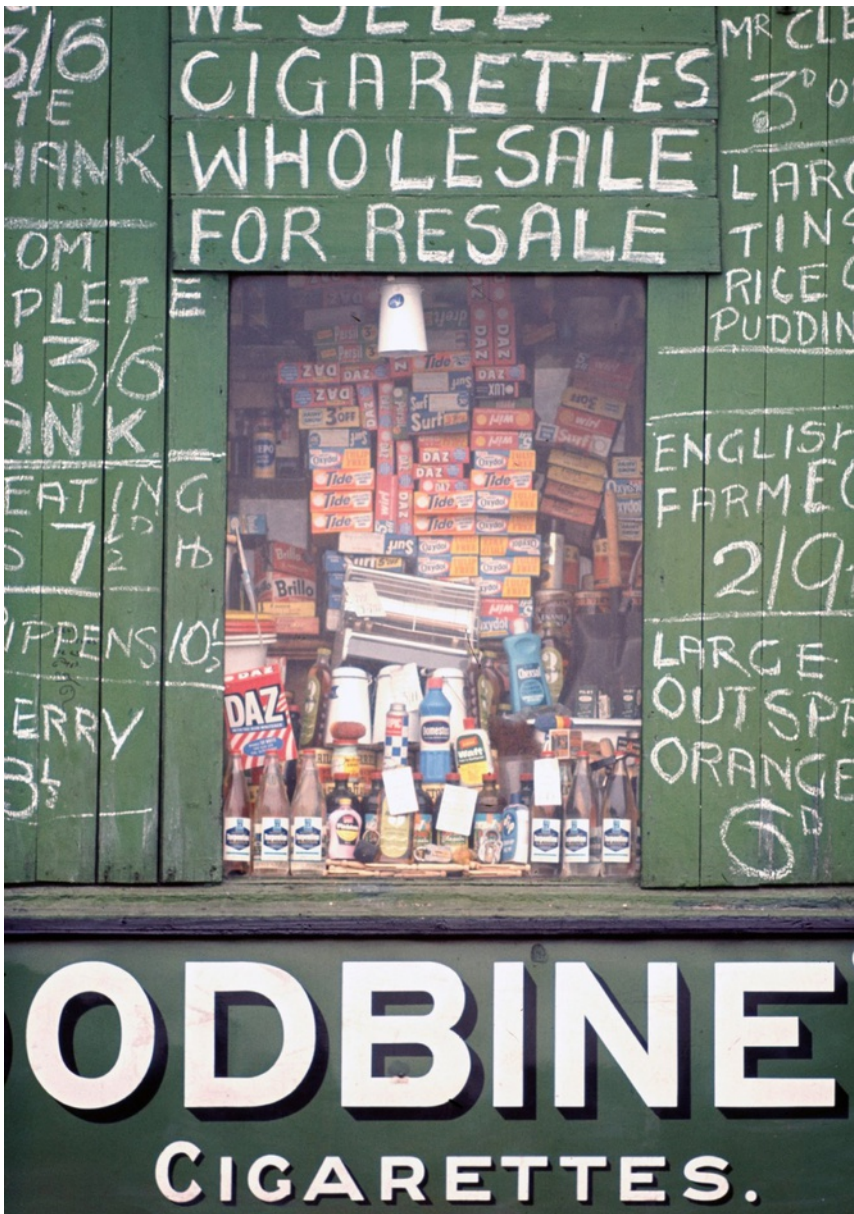
Printed 1970-83

Paper size: 40 x 30 cm

Frame size: 60 x 50 cm

(24736-BB)

JOHN BULMER
Leeds, 1965



Signed, titled, and dated verso
Vintage Cibachrome print
Paper size: 40.5 x 30.5 cm
Image size: 39 x 26 cm
Frame size: 57.5 x 45.5 cm
(19458-JBU)

Image 1/2

Leeds 1965
John Barlow

Image 2/2

Leeds 1965

John Barnes

Image 2/2

TIM FLACH

Spix's Macaw, Rearview, Unextinct, 2022



Accompanied by a signed and editioned label and certificate from the artist

Fuji Crystal Archive Print Mounted to Dibond

Paper size: 151 x 122 cm

Frame size: 166 x 134.5 cm

(001-TFL)

Image 1/2

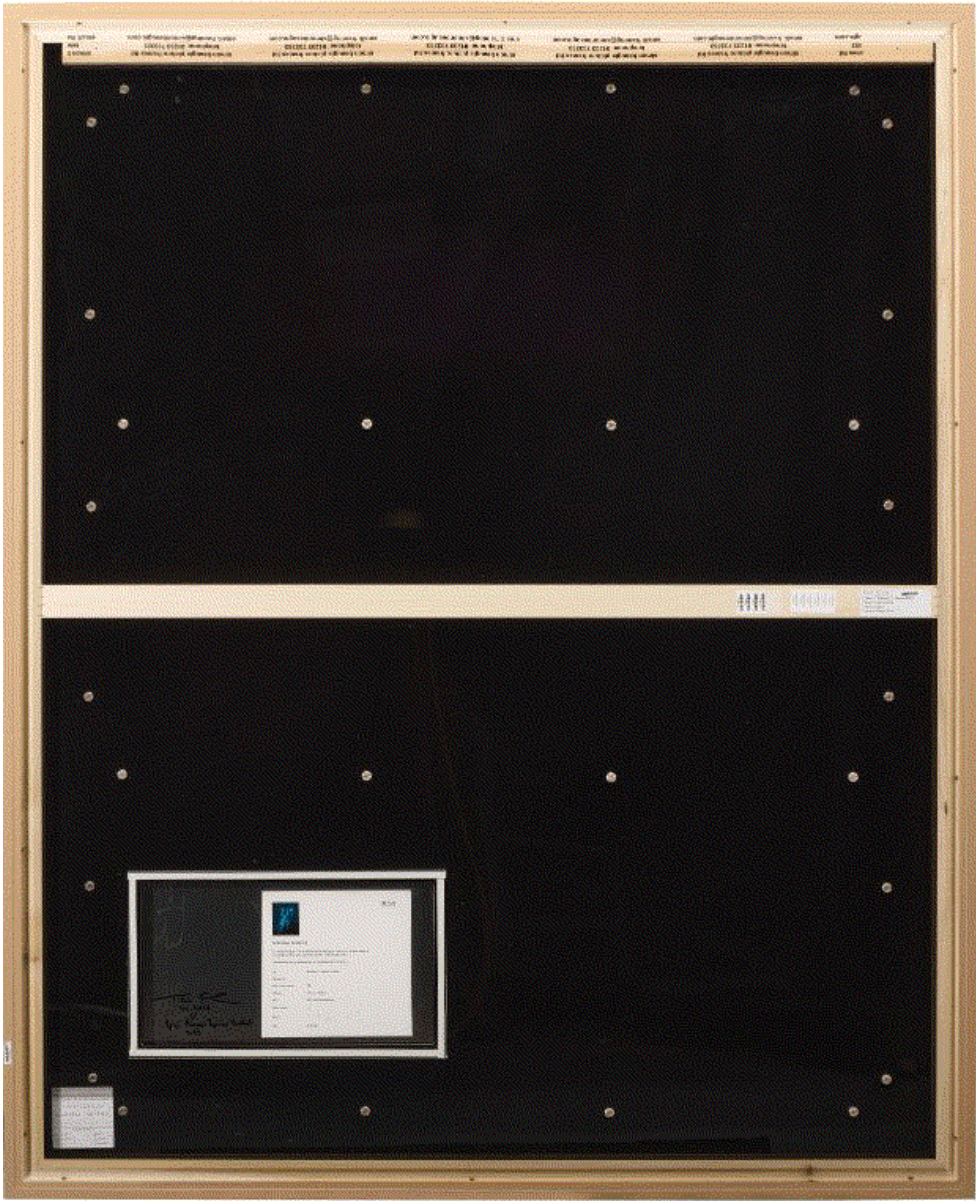


Image 2/2

MASAHISA FUKASE

Untitled, from Private Scenes, 1990-1991



Artist's estate wet stamp verso

Vintage hand-coloured silver gelatin print

Paper size: 35.4 x 42.9 cm

Frame size: 43 x 53 cm

(30034-MFK)

Image 1/2



Image 2/2

MASAHISA FUKASE

Untitled, from Private Scenes, 1990-1991



Artist's estate wet stamp verso

Vintage hand-coloured silver gelatin print

Paper size: 35.4 x 42.9 cm

Frame size: 43 x 53 cm

(30033-MFK)

MASAHISA FUKASE

Untitled, from the Solitude of Ravens, 1976-1986



Artist's estate wet stamp verso

Vintage silver gelatin print

Paper size: 23.9 x 30.4 cm

Image size: 19.4 x 28 cm

Frame size: 51 x 64 cm

(30024-MFK)

MASAHISA FUKASE

Untitled, from the Solitude of Ravens, 1976-1986



Artists estate wet stamp verso

Vintage silver gelatin print

Paper size: 23.9 x 30.2 cm

Frame size: 48 x 62 cm

(29912-MFK)

Image 1/2



Image 2/2

ORI GERSHT
Fusing Time 04, 2022



Signed verso
Accompanied by a signed artist certificate
Archival pigment print
Image size: 145.5 x 111 cm
Frame size: 150.5 x 113.5 cm
Edition 4/6 + 2 APs
(2015-OGR)

HIROSHI HAMAYA

Battledore Fair held on New Year's Day, Asakusa, Tokyo, 1939



Artist's wet stamp and annotations verso

Silver gelatin print, printed later

Paper size: 43 x 35.6 cm

Image size: 37 x 25 cm

Frame size: 57.5 x 45.5 cm

(29652-HH)

HIROSHI HAMAYA

Snow season market, Tokamachi, Niigata, 1956



Artist's wet stamp and annotations verso

Silver gelatin print, printed later

Paper size: 55.8 x 45.8 cm

Image size: 47 x 32 cm

Frame size: 65.5 x 49 cm

(29639-HH)

HIROSHI HAMAYA

Girl carrying baby in a mountain village, Ohira, Aomori, 1955



Artist's wet stamp and annotations verso

Silver gelatin print, printed later

Paper size: 20.1 x 30.3 cm

Image size: 16 x 24 cm

Frame size: 38 x 43.5 cm

(29644-HH)

EIKOH HOSOE
Kamaitachi #39, 1968



Initialed in ink recto
Signed, titled and dated in pencil verso
Silver gelatin print, printed later
Image size: 55.5 x 36.6 cm
Paper size: 50.6 x 61.2 cm
Frame size: 66 x 85.5 cm
(28084-EIH)

Image 1/3



Image 2/3

Kamaitachi #39, 1968

Eikoh 14000

Image 3/3

TETSUYA ICHIMURA
Untitled, from Come Up, c.1970



Vintage silver gelatin print
Paper size: 20 x 25.4 cm
Image size: 15.7 x 22 cm
Frame size: 34 x 40 cm
(2027-TIC)

Image 1/3



Image 2/3



Image 3/3

ISHIUCHI MIYAKO
Yokosuka Again #17, 1981



Signed and dated by the artist verso
Vintage silver gelatin print
Printed 1988
Paper size: 25.5 x 31 cm
Image size: 19 x 30 cm
Frame size: 45.5 x 58 cm
(29599-MII)

ISHIUCHI MIYAKO
Apartment, 1977-1978



Signed, titled, and dated by the artist verso
Vintage silver gelatin print
Printed 1978
Paper size: 20.5 x 25 cm
Frame size: 45.5 x 58 cm
(29592-MII)

Image 1/2

Iskra. Miyako 1977-1978/1978. 'APARTMENT'

Image 2/2

ISHIUCHI MIYAKO
Mother's #36, 2002



Accompanied by a signed and edited label

C-type print

Image size: 28.5 x 19 cm

Frame size: 31 x 21.5 cm

Edition 4/15

(29614-MII)

TIINA ITKONEN

Home 2, Kuummiut, 2015



Accompanied by signed artist label

Pigment print on Hahnemühle Photo Rag Ultra Smooth

Framed with museum glass

Image size: 60 x 85 cm

Frame size: 62 x 87 cm

Edition 4/7 + 2 APs

(26748-TITK)

TIINA ITKONEN
Home 17, Isortoq, 2017



Accompanied by signed artist label
Pigment print on Hahnemühle Photo Rag Ultra Smooth
Framed with museum glass
Image size: 60 x 85 cm
Frame size: 62 x 87 cm

Edition 4/7 + 2 APs
(26751-TITK)

TIINA ITKONEN
Home 12, Isortoq, 2017



Accompanied by signed artist label
Pigment print on Hahnemühle Photo Rag Ultra Smooth
Framed with museum glass
Image size: 60 x 85 cm
Frame size: 62 x 87 cm

Edition 4/7 + 2 APs
(26749-TITK)

TIINA ITKONEN
Home 13, Qanaaq, 2019



Accompanied by signed artist label
Pigment print on Hahnemühle Photo Rag Ultra Smooth
Framed with museum glass
Image size: 60 x 85 cm
Frame size: 62 x 87 cm

Edition 4/7 + 2 APs
(26750-TITK)

COLIN JONES

Coal Merchants Shop, Benwell, Newcastle-upon-Tyne, 1963



Signed, titled and dated in pencil verso

Silver gelatin print

Paper size: 40.9 x 50.5 cm

Image size: 34.5 x 49 cm

Frame size: 52 x 67 cm

(1990-CJ)

Image 1/2

CJS

RF



Colin Jones

1990-03

Image 2/2

COLIN JONES

Jarrow, 1963



Signed and editioned in pencil verso

Silver gelatin print

Paper size: 40.6 x 50.8 cm

Frame size: 52 x 67 cm

Edition 3/25

(3000-CJ)

Image 1/2

CJ8

Boisj



JARROW 1963

3000-65

Image 2/2

COLIN JONES

The Black House, Satan Loves You, Holloway Road, London, 1973 -1976



Signed, titled and dated in pencil and with artist's wet stamp verso

Artist's embossed stamp recto

Vintage silver gelatin print

Paper size: 50.7 x 40.9 cm

Frame size: 67 x 52 cm

(16351-CJ)

Image 1/2

VINTAGE

PHOTOGRAPHED
AND PRINTED
BY:
COLIN JONES
©

[Handwritten signature]
VINTAGE

COLIN JONES ©

THE BLOCKHOUSE LONDON 1973/1976



Image 2/2

COLIN JONES

The Black House, London, 1973-1976



Signed, titled and dated in pencil and with artist's wet stamp verso
Artist's embossed stamp recto

Vintage silver gelatin print
Paper size: 50 x 40 cm
Frame size 52 x 67 cm

(16510-CJ)

Image 1/2

VINTAGE

[Handwritten signature]

THE BLACK HOUSE
LONDON

1973-1976



10510-01

Image 2/2

KIKUJI KAWADA

The Mask, from Los Caprichos, 1976



Signed, titled, and dated verso

Vintage silver gelatin print

Printed 1976

Paper size: 30.5 x 25.4 cm

Frame size: 46 x 38.5 cm

(27998-KKA)

Image 1/3



Image 2/3

Los Caprichos
* The Mask

La Kawata
Los Caprichos
761116 print

PS207 22

Image 3/3

KIKUJI KAWADA

In Swimming Pool, Tokyo, Los Caprichos, 1978



Signed in English and Japanese, titled, dated and inscribed in pencil and with artist's wet stamp verso

Vintage silver gelatin print, printed 1979

Paper size 40.8 x 50.7 cm

Image size: 25.9 x 38.9 cm

Frame size: 51.5 x 61.5 cm

(27979-KKA)

Image 1/2

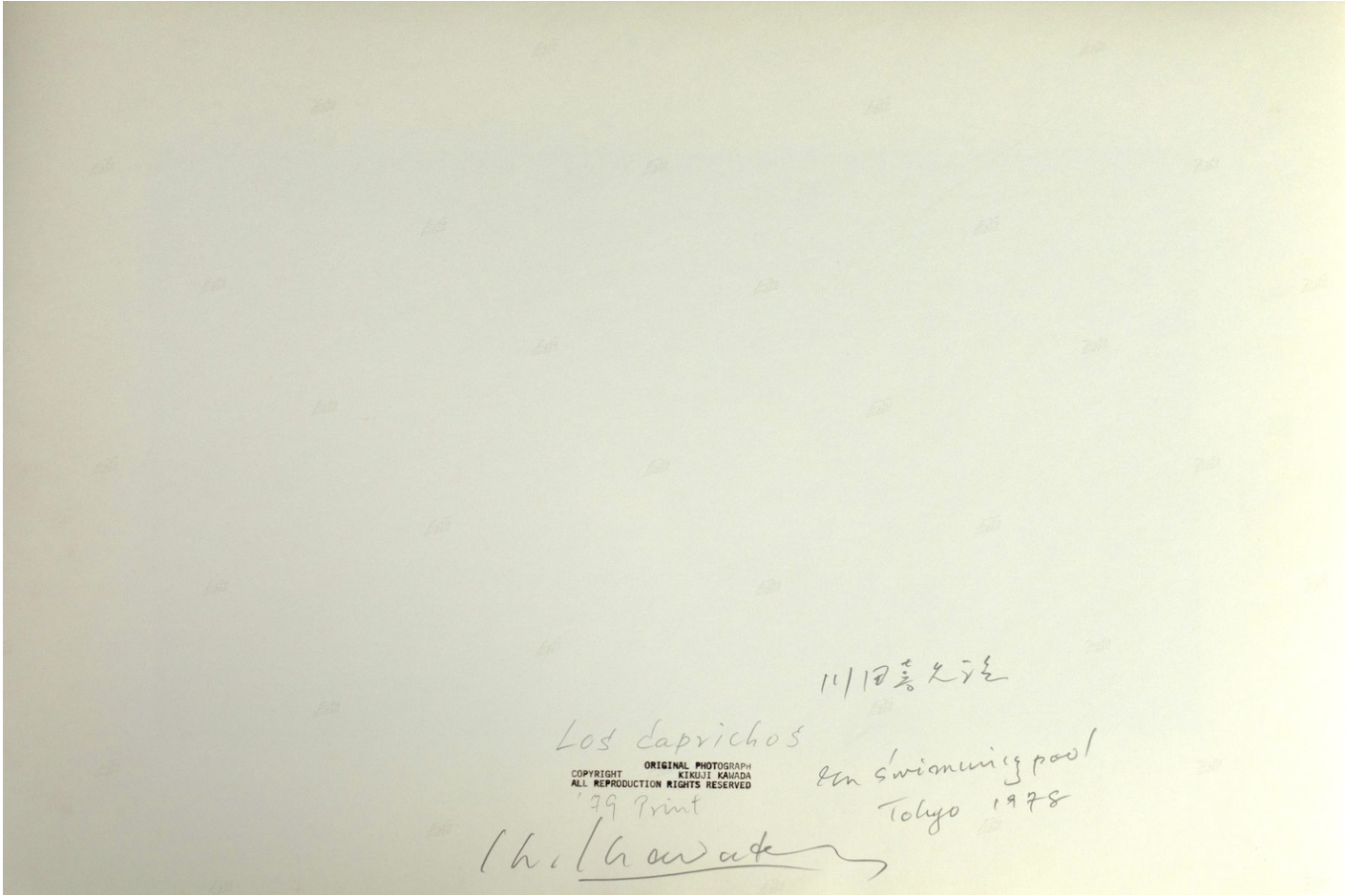


Image 2/2

SIRKKA-LIISA KONTTINEN

Children with Collected Junk, from Byker, 1971



Signed, titled, and dated in pencil verso

Silver gelatin print

Printed 2021

Paper size: 40.5 x 50.5 cm

Image size: 26 x 39 cm

Frame size: 45.5 x 58 cm

(29066-SLK)

Image 1/4

Printed by SAK 2021

Image 2/4

Sirkka-Liisa Koskkinen

Image 3/4



Image 4/4

SIRKKA-LIISA KONTTINEN

Girl Playing a Piano in a Derelict House, Byker, 1971



Signed, dated, and titled in pencil verso

Silver gelatin print

Printed 2014

Paper size: 40.5 x 50.5 cm

image size: 26 x 39 cm

Frame size: 45.5 x 57.5 cm

(29047-SLK)

Image 1/3

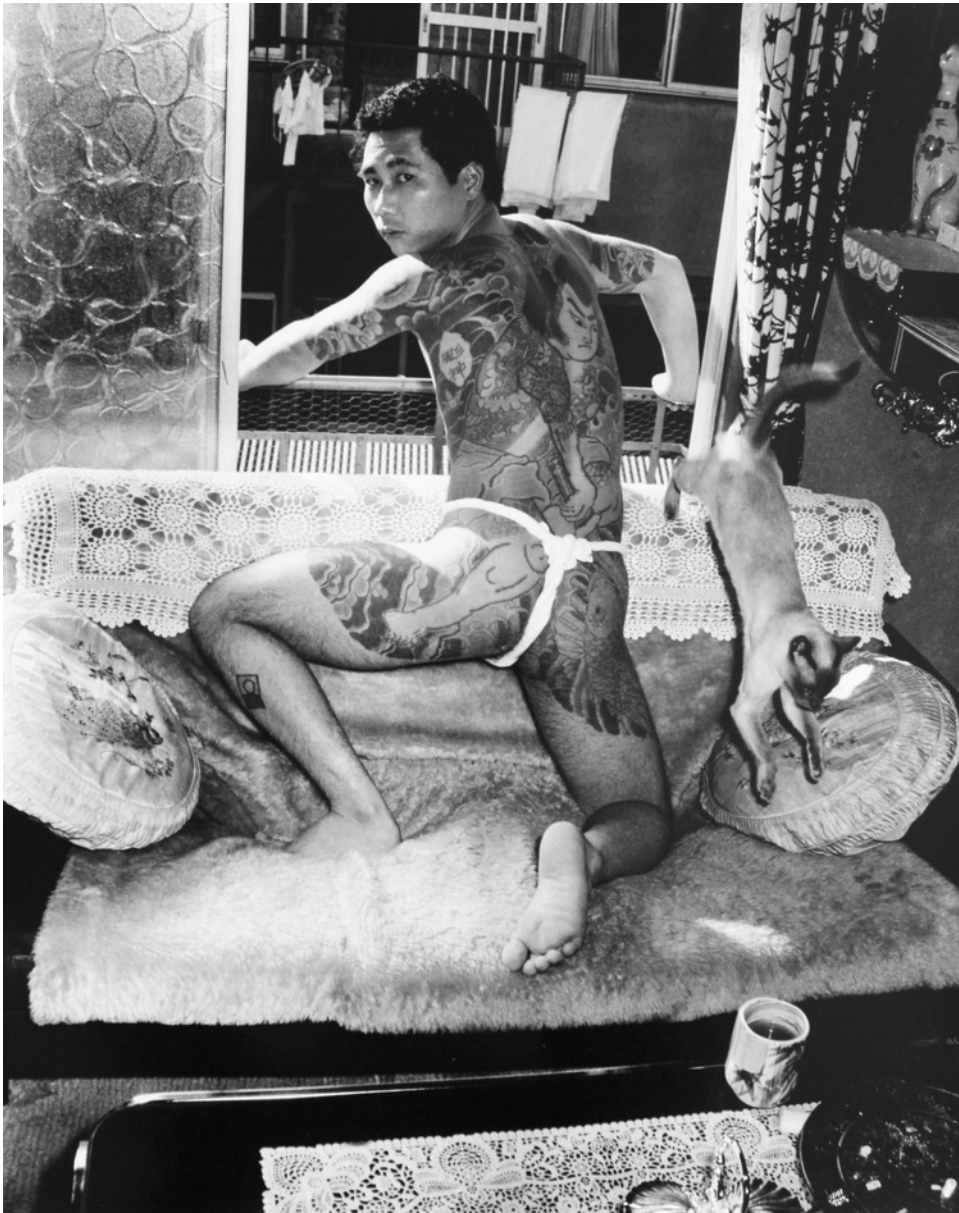
Byker 1971 (P5137 SLK) Printed by SLK 2014

Image 2/3

Sirkka-Liisa Konttinen

Image 3/3

SEIJI KURATA
Yakuza and Cat, 1978



Signed by Keiko Kurata, editioned, dated and with artist's estate wet stamp verso
Silver gelatin print, printed later
Paper size: 50 x 40 cm
Frame size: 75 x 64 cm
Edition 2/3
(27283-SEK)

SARAH MOON
L'inconnue, 2011



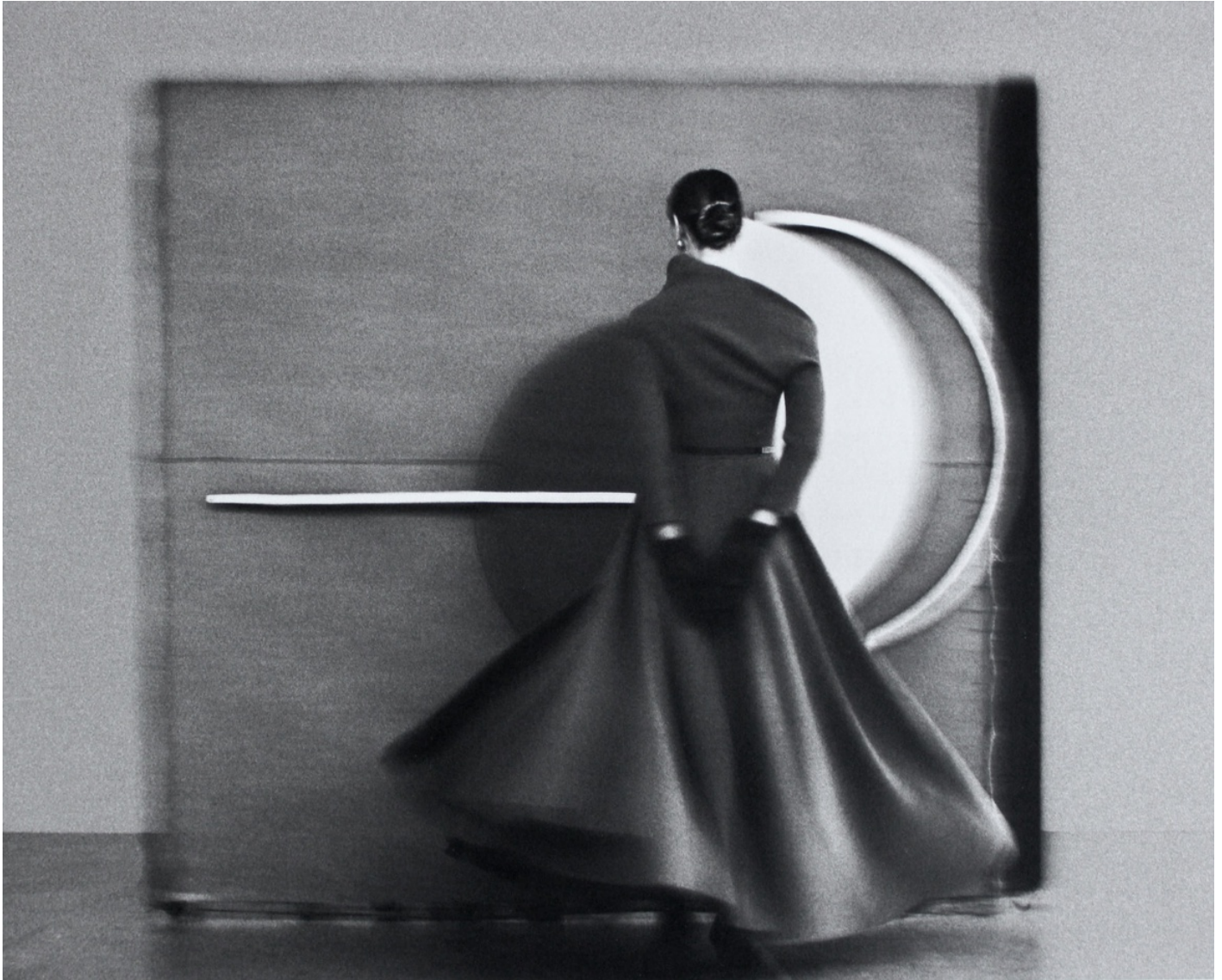
Titled, editioned, and signed verso
Artist's dry stamp recto
Toned silver gelatin print
Paper size: 60.1 x 50.2 cm
Image size: 55.5 x 45 cm
Frame size: 87 x 73.5 cm
Edition 13/20
(29779-SAM)

SARAH MOON
La Robe Dorée, 2021



Titled, editioned, and signed verso
Artist's dry stamp recto
Colour pigment print
Printed 2022
Paper size: 74 x 57 cm
Frame size: 86.5 x 71.5 cm
Edition 7/15
(29784-SAM)

SARAH MOON
Maria Grazia Chiuri, 2017



Signed, titled, and editioned verso
Platinum print
Paper size: 50 x 60 cm
Image size: 40 x 50 cm
Frame size: 74 x 87 cm
Edition 3/15
(29794-SAM)

Image 1/2

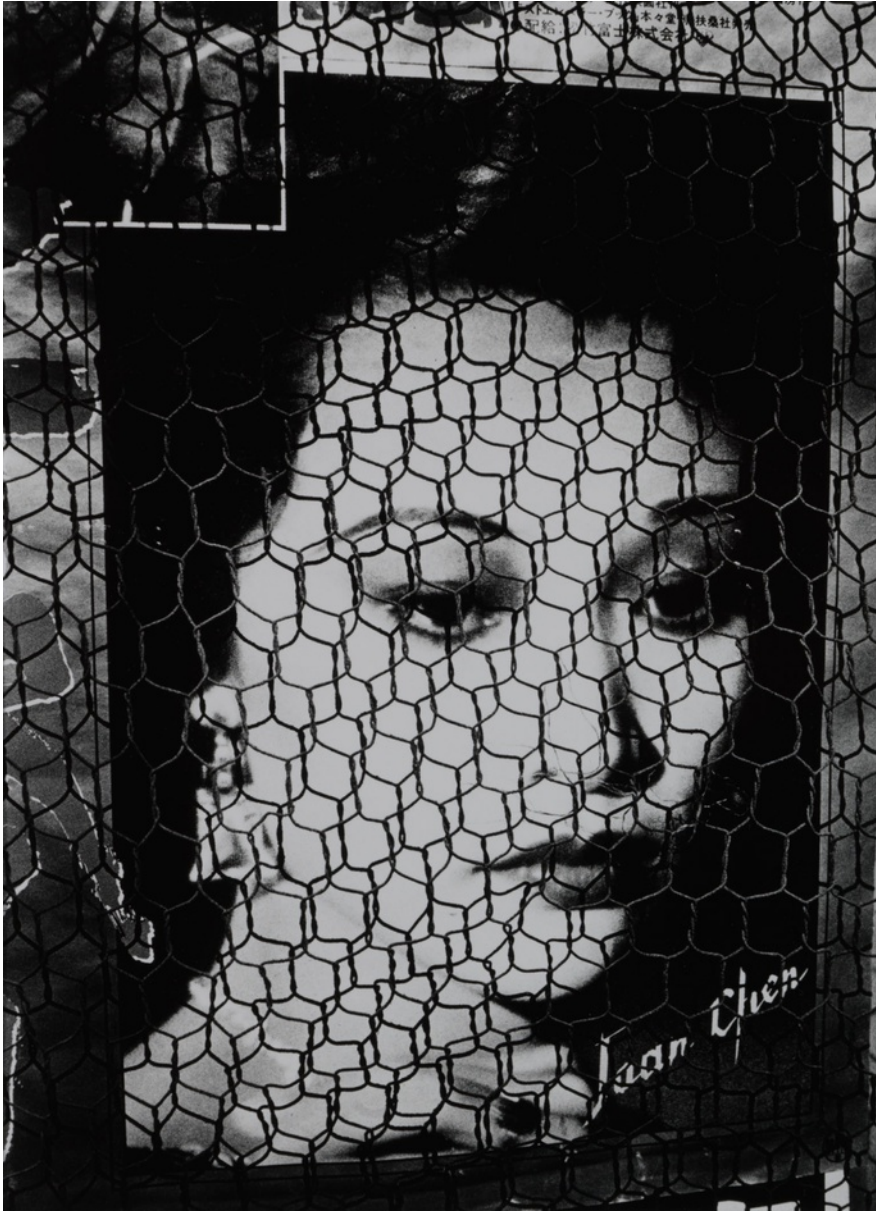
Maria Grazia from Dior.

3/15

Sarah Noon -

Image 2/2

DAIDO MORIYAMA
Poster: Koriyama City, 1989



Signed in pencil verso
Vintage silver gelatin print
Paper size: 35.4 x 27.8 cm
Image size: 29.8 x 21.5 cm
Frame size: 57.5 x 45.5 cm
(17804-DAM)

Image 1/3

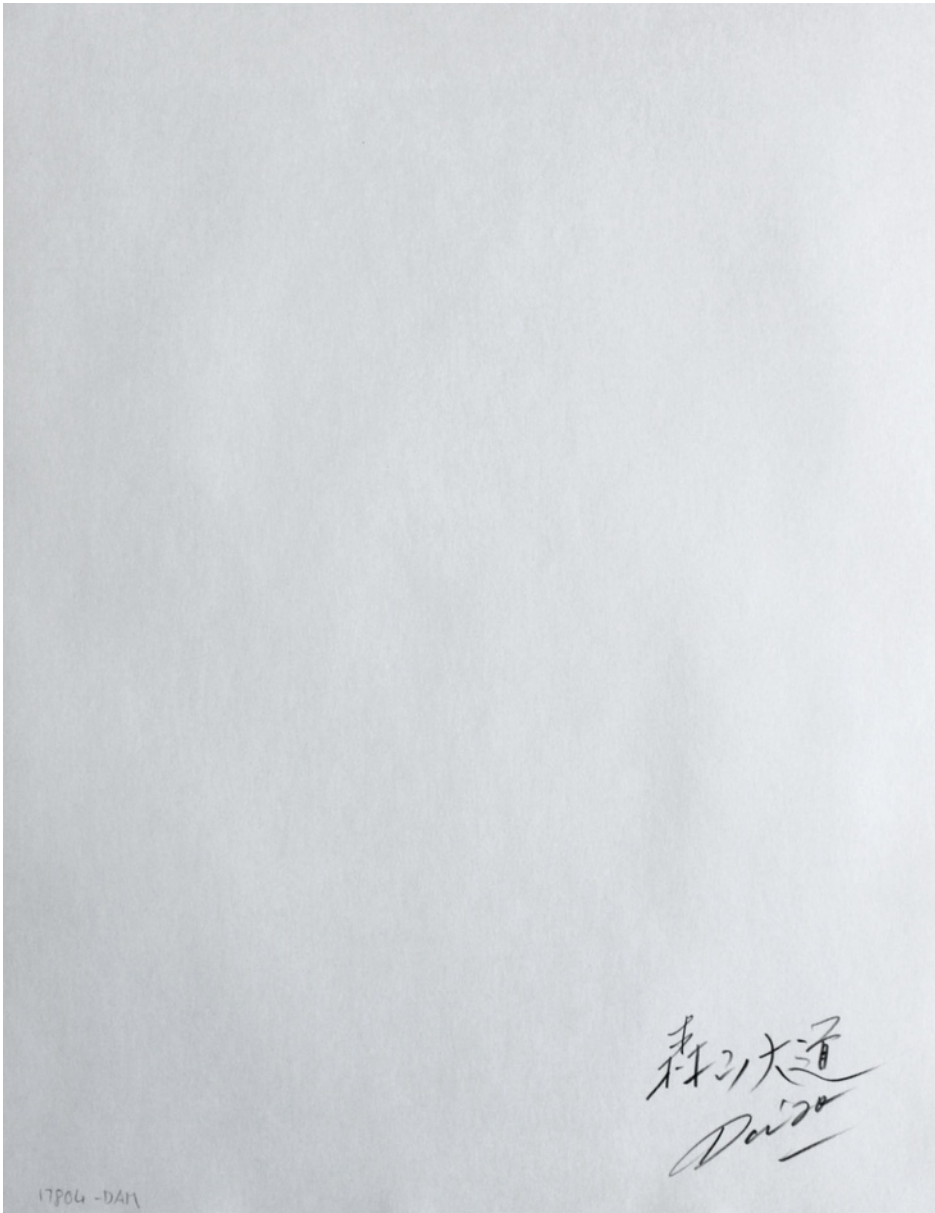


Image 2/3

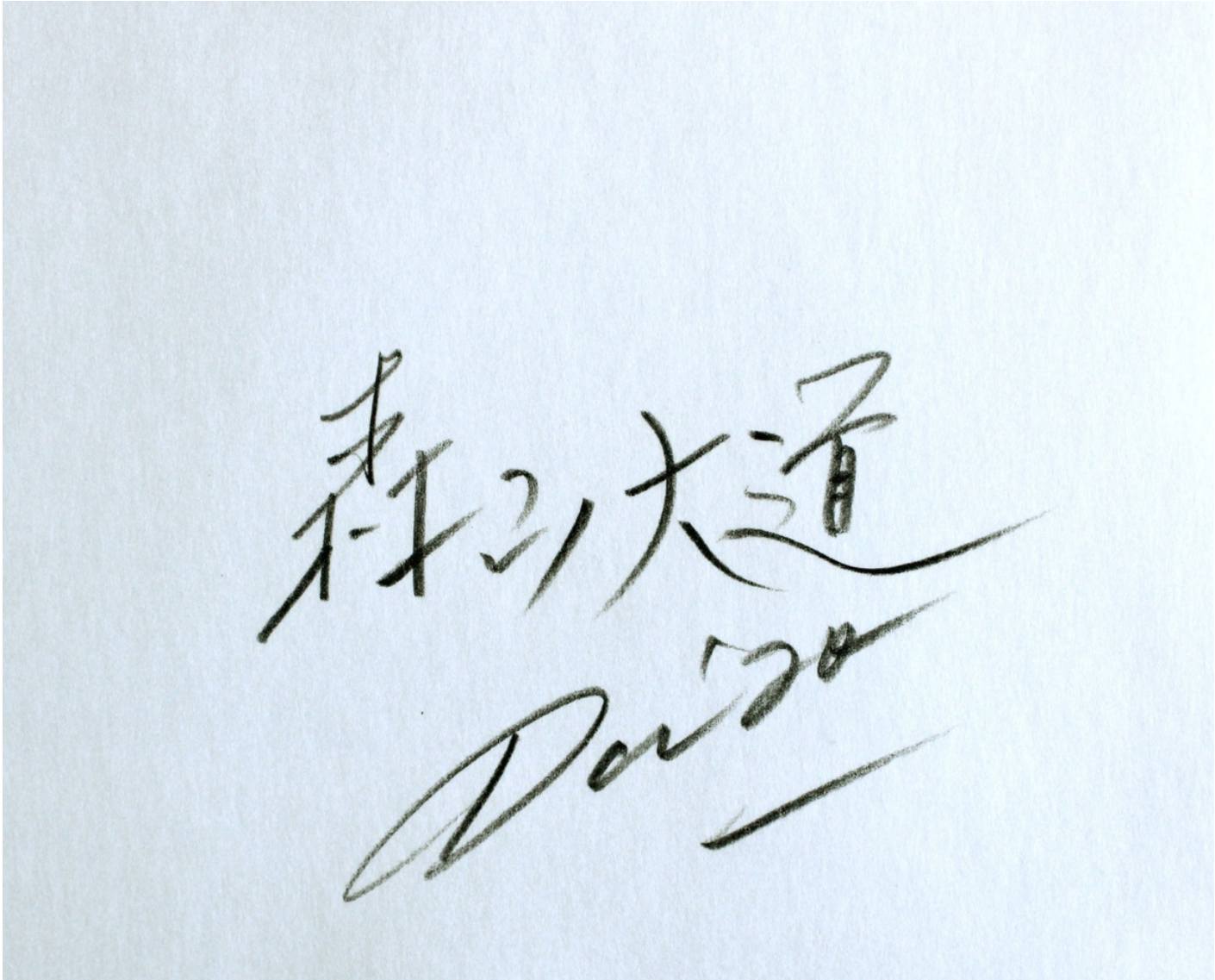


Image 3/3

DAIDO MORIYAMA
Daido Hysteria No. 8, 1997



Signed in ink verso
Vintage silver gelatin print
Paper size: 30.4 x 25.3 cm
Image size: 29.6 x 23.7 cm
Frame size: 57.5 x 45.5 cm
(29672-DAM)

Image 1/2



Image 2/2

DAIDO MORIYAMA
Daido Hysteria No. 8, 1997



Signed in ink verso
Vintage silver gelatin print
Paper size: 30.4 x 25.3 cm
Image size: 29.4 x 24.3 cm
Frame size: 57.5 x 45.5 cm
(29673-DAM)

Image 1/2



Image 2/2

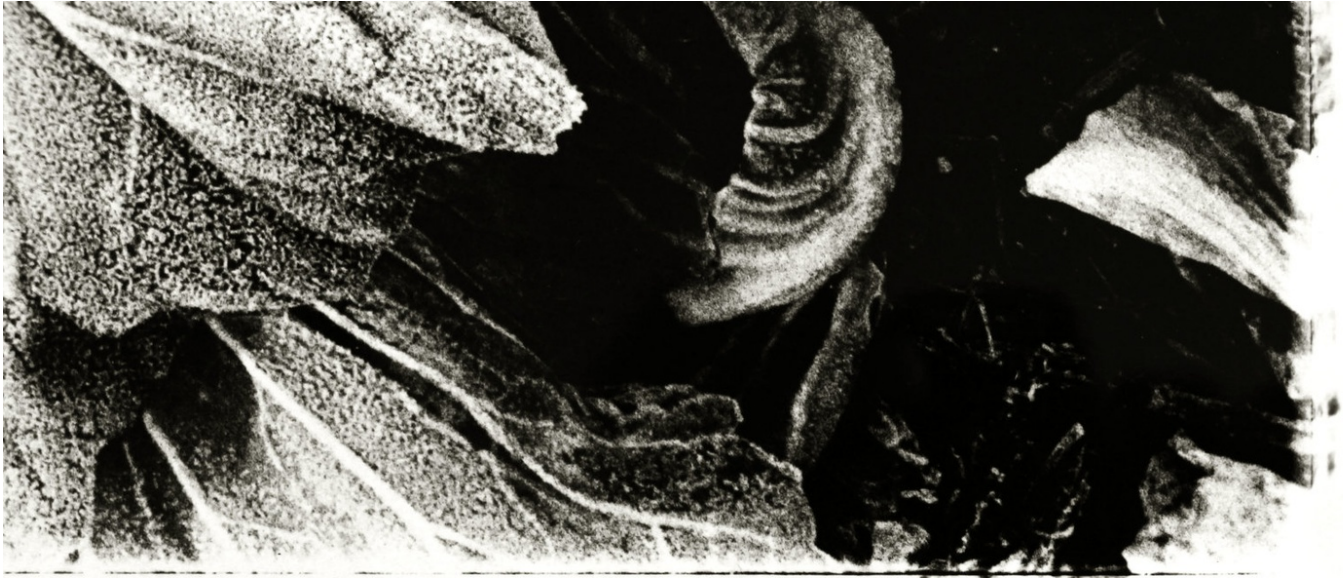
DAIDO MORIYAMA
Cabbage, 1989



Signed in pencil verso
Silver gelatin print, printed later
Paper size: 35.5 x 43 cm
Frame size: 45.5 x 57.5 cm

(23025-DAM)

Image 1/2



森口道
Daisuke

Image 2/2

DAIDO MORIYAMA
Provoke No. 2, 1969



Signed in Japanese and English verso
Silver gelatin print, printed later
Paper size: 45.8 x 56 cm
Frame size: 58 x 74 cm

(29654-DAM)

Image 1/2

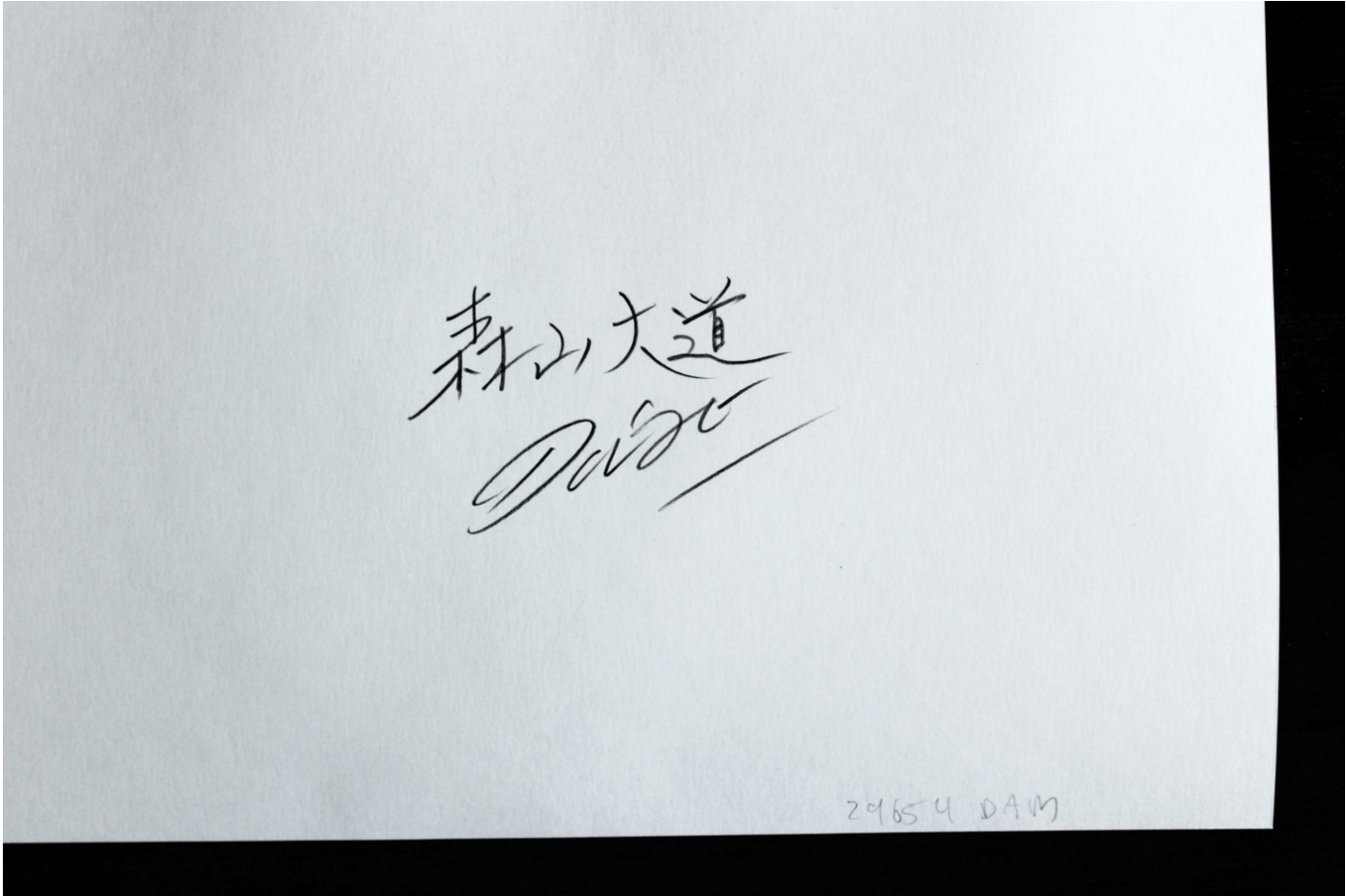
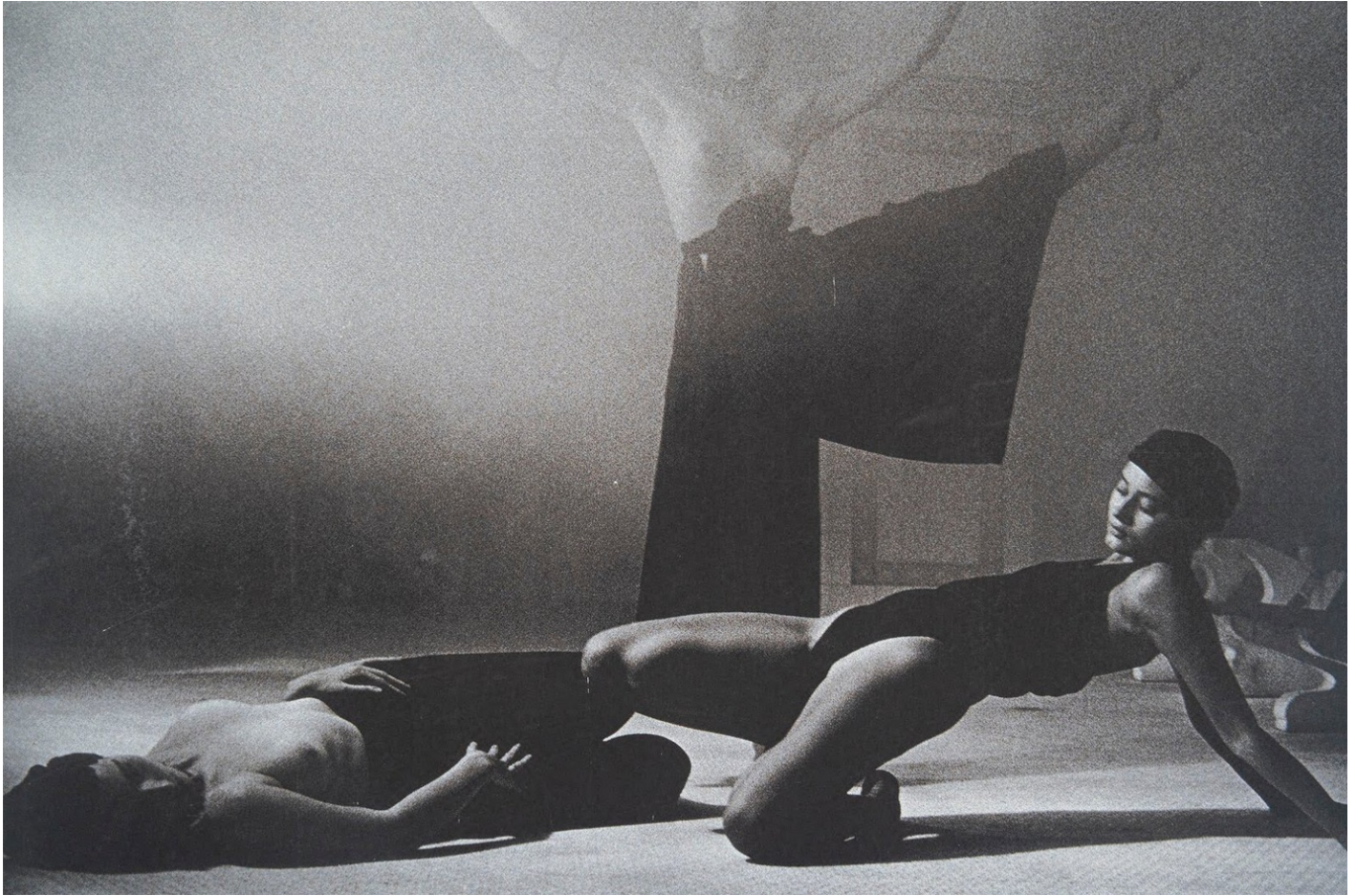


Image 2/2

DEBORAH TURBEVILLE

Italian Vogue, from series "Women of the Steam Bath," New York, NY, May 1984



Signed and with annotations verso

Silver gelatin print

Paper size: 28 x 35.5 cm

Frame size: 43 x 57 cm

(003-DT)

TIM WALKER

Guinevere van Seenus, 20 mattresses and 1 hot water bottle, Fashion: Vivienne Westwood, Glemham Hall, Suffolk, England, 2006



Accompanied by a signed, titled and editioned label from the artist

Archival pigment print

Image size: 104.9 x 81.2 cm

Paper size: 129.5 x 106.6 cm

Frame size: 108.5 x 85 cm

Edition 4/10 + 2 APs

(30105-TIW)

TIM WALKER

Box of Delights, James Spencer, London, 2018



Accompanied by a signed and editioned artist label

Archival pigment print on Hahnemühle Fine Art Pearl paper

Paper size: 116.6 x 87.6 cm

Frame size: 117.5 x 89 cm

Edition 1/10 + 2 APs

(30035-TIW)

TIM WALKER

Lily Cole on old Vogue cover, London, 2004



Accompanied by a signed, titled and editioned label from the artist

C-type print

Paper size: 152.4 x 125.9 cm

Image size: 127 x 100.5 cm

Frame size: 130 x 104 cm

Edition 1/10 + 2 APs

(30092-TIW)

TIM WALKER

Tilda Swinton, Fashion: Giorgio Armani, Las Pozas, Mexico, 2012



Accompanied by a signed, titled and editioned label from the artist

Archival pigment print

Image size: 90.2 x 125 cm

Paper size: 97.5 x 132.5 cm

Frame size: 100 x 135 cm

Edition 1/10 + 2 APs

(30096-TIW)

HARLEY WEIR
Function, 2016



Accompanied by a signed and editioned artist label

C-type print

Image size: 82.5 x 68 cm

Frame size: 86.5 x 72 cm

Edition 1/7

(29798-HYW)