

# MICHAEL HOPPEN GALLERY

## ERNEST C. WITHERS

Michael Hoppen Gallery  
3 Jubilee Place  
London  
SW3 3TD

For all enquiries  
t +44 (0)20 7352 3649  
e: [gallery@michaelhoppengallery.com](mailto:gALLERY@michaelhoppengallery.com)

For full details and larger images, please see the end of this document.



### Ernest C. Withers

*Mule Train leaves for Washington, Poor People's March, Marks, MS May, 1968*

Signed by the artist in pencil on the verso. Annotations in pencil on the verso.

Silver gelatin print, printed later

Paper size: 40.4 x 50.3 cm

Image size: 32.8 x 37.7 cm

(023-ECW)

[View detail](#)



### Ernest C. Withers

*I Am a Man: Sanitation Workers Strike, Memphis, TN, 1968*

Signed by the artist in pencil on the verso. Annotations in pencil on the verso.

Silver gelatin print, printed later

Paper size: 50.75 x 60.7 cm

Image size: 32.9 x 56.8 cm

(025-ECW)

[View detail](#)



### Ernest C. Withers

*Corner of Hernando and Beale St., at the time of Dr. Martin Luther King's last march. Memphis, 1968.*

Signed by the artist in pencil on the verso. Annotations in pencil on the verso.

Silver gelatin print, printed later

Paper size: 40.35 x 50.4 cm

Image size: 35.1 x 45.2 cm

(024-ECW)

[View detail](#)



**Ernest C. Withers**

[View detail](#)

*First press conference of the March Against Fear, announcing Martin Luther King, Jr., taking over after Meredith was shot, basement, United Methodist Church, with Floyd McKissick, Stokely Carmichael and others, Memphis, TN 1966*

Signed by the artist in pencil on the verso. Annotations in pencil on the verso.

Silver gelatin print, printed later

Paper size: 60.5 x 50.75 cm

Image size: 45.2 x 45.5 cm

(026-ECW)

£ 6,000.00 ex. VAT



**Ernest C. Withers**

[View detail](#)

*Dr. Martin Luther King Jr. and Rev. Ralph Abernathy ride on one of the first desegregated buses, Montgomery, AL, December 21, 1956*

Signed by the artist in pencil on the verso. Annotations in pencil on the verso.

Silver gelatin print, printed later

Paper size: 27.8 x 35.5 cm

Image size: 25.3 x 30.9 cm

(005-ECW)

£ 2,600.00 ex. VAT



**Ernest C. Withers**

[View detail](#)

*Bumper sticker campaign organized by the Regional Council of Negro Leadership, Mound of Bayou, MS, founded by Dr. T.R.M Howard, Memphis, TN, 1952*

Signed by the artist in pencil on the verso. Annotations in pencil on the verso.

Silver gelatin print, printed later

Paper size: 40.6 x 50.45 cm

Image size: 37.9 x 47.9 cm

(014-ECW)

£ 3,700.00 ex. VAT



**Ernest C. Withers**

[View detail](#)

*Ernest C. Withers in front of his delivery van, 1941 Ford Wagon, late 1940's*

Signed by the artist in pencil on the verso. Annotations in pencil on the verso.

Silver gelatin print, printed later

Paper size: 27.8 x 35.35 cm

Image size: 24 x 32.8 cm

(007-ECW)

£ 3,300.00 ex. VAT



**Ernest C. Withers**

*Twins at WDIA, 1948*

Signed by the artist in pencil on the verso. Annotations in pencil on the verso.

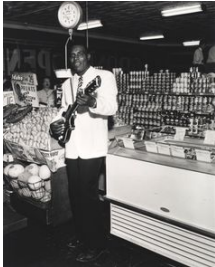
Silver gelatin print, printed later

Paper size: 35.3 x 27.9 cm

Image size: 32.8 x 25.4 cm

(001-ECW)

[View detail](#)



**Ernest C. Withers**

*Howlin' Wolf, Memphis grocery store, ca 1951*

Signed by the artist in pencil on the verso. Annotations in pencil on the verso.

Silver gelatin print, printed later

Paper size: 35.4 x 27.8 cm

Image size: 31.35 x 25.1 cm

(004-ECW)

[View detail](#)



**Ernest C. Withers**

*Al Green, Mid-south Coliseum, August 1973*

Signed by the artist in pencil on the verso. Annotations in pencil on the verso.

Silver gelatin print, printed later

Paper size: 50.4 x 40.6 cm

Image size: 48.1 x 32.35 cm

(021-ECW)

[View detail](#)

\$ 4,600.00 ex. VAT



**Ernest C. Withers**

*James Brown, Mod-South Coliseum, Memphis, TN, ca 1975*

Signed by the artist in pencil on the verso. Annotations in pencil on the verso.

Silver gelatin print, printed later

Paper size: 35.35 x 27.9 cm

Image size: 25.2 x 25.6 cm

(006-ECW)

[View detail](#)

\$ 3,600.00 ex. VAT



**Ernest C. Withers**

*Evelyn Young, BB King, Bill Harvey, Club Handy, ca 1951*

Signed by the artist in pencil on the verso. Annotations in pencil on the verso.

Silver gelatin print, printed later

Paper size: 50.5 x 40.6 cm

Image size: 47.9 x 38 cm

(020-ECW)

[View detail](#)

\$ 4,600.00 ex. VAT



**Ernest C. Withers**

*Big Maybelle with Rufus Thomas (to her left), 1950's*

Signed by the artist in pencil on the verso. Annotations in pencil on the verso.

Silver gelatin print, printed later

Paper size: 27.85 x 35.4 cm

Image size: 19.3 x 32.8 cm

(010-ECW)

[View detail](#)

\$ 4,500.00 ex. VAT



**Ernest C. Withers**

*Elvis Presley, Nick Adams with the Lausky Brothers, 1958*

Signed by the artist in pencil on the verso. Annotations in pencil on the verso.

Silver gelatin print, printed later

Paper size: 27.85 x 35.4 cm

Image size: 25.25 x 32.65 cm

(009-ECW)

[View detail](#)

£ 4,000.00 ex. VAT



**Ernest C. Withers**

*Elvis backstage, WDIA Goodwill Revue, Ellis Auditorium, December 7 1956, (Carla Thomas in front)*

Signed by the artist in pencil on the verso. Annotations in pencil on the verso.

Silver gelatin print, printed later

Paper size: 35.4 x 27.8 cm

Image size: 31.4 x 25.1 cm

(003-ECW)

[View detail](#)



**Ernest C. Withers**

*B.B. King performing at night club May, 1970*

Signed by the artist in pencil on the verso. Annotations in pencil on the verso.

Silver gelatin print, printed later

Paper size: 40.4 x 50.5 cm

Image size: 37.9 x 46 cm

(016-ECW)

[View detail](#)

\$ 5,500.00 ex. VAT



**Ernest C. Withers**

*B.B. King's Tour Bus, "Big Red", Beale Street, ca. 1956*

Signed by the artist in pencil on the verso. Annotations in pencil on the verso.

Silver gelatin print, printed later

Paper size: 27.8 x 35.4 cm

Image size: 19.2 x 32.85 cm

(011-ECW)

[View detail](#)

£ 3,300.00 ex. VAT





**Ernest C. Withers**

[View detail](#)

*B.B. King and Ray Charles, mid 1950's*

Signed by the artist in pencil on the verso. Annotations in pencil on the verso.

Silver gelatin print, printed later

Paper size: 50.4 x 40.5 cm

Image size: 47.5 x 37.9 cm

(019-ECW)

£ 3,700.00 ex. VAT



**Ernest C. Withers**

[View detail](#)

*Ray Charles and Hank Crawford performing at City Auditorium, ca. 1961*

Signed by the artist in pencil on the verso. Annotations in pencil on the verso.

Silver gelatin print, printed later

Paper size: 50.4 x 40.5 cm

Image size: 45.5 x 35.95 cm

(018-ECW)

£ 3,700.00 ex. VAT



**Ernest C. Withers**

[View detail](#)

*Rhythm 'n' Blues Revue, on the midway at the Cottonmaker's Jubilee in the Beale Street Auditorium Park, early 1950's*

Signed by the artist in pencil on the verso. Annotations in pencil on the verso.

Silver gelatin print, printed later

Paper size: 50.5 x 40.5 cm

Image size: 37.8 x 38 cm

(015-ECW)

\$ 5,500.00 ex. VAT



**Ernest C. Withers**

[View detail](#)

*Waitresses and juke box, Plantation Inn, West Memphis, TN, 1950's*

Signed by the artist in pencil on the verso. Annotations in pencil on the verso.

Silver gelatin print, printed later

Paper size: 40.6 x 50.6 cm

Image size: 38 x 47.9 cm

(013-ECW)

£ 6,500.00 ex. VAT



**Ernest C. Withers**

*Albert King, Club Paradise, early 1960's*

Signed by the artist in pencil on the verso. Annotations in pencil on the verso.

Silver gelatin print, printed later

Paper size: 40.6 x 50.5 cm

Image size: 32.9 x 48 cm

(012-ECW)

[View detail](#)

£ 4,500.00 ex. VAT



**Ernest C. Withers**

*Tina Turner, Ike and Tina Revue, Club Paradise, 1962*

Signed by the artist in pencil on the verso. Annotations in pencil on the verso.

Silver gelatin print, printed later

Paper size: 27.85 x 35.4 cm

Image size: 25.2 x 30.25 cm

(008-ECW)

[View detail](#)

\$ 4,000.00 ex. VAT



**Ernest C. Withers**

*Bobby "Blue" Bland, Club Handy, Memphis, TN, late 1950s*

Signed by the artist in pencil on the verso. Annotations in pencil on the verso.

Silver gelatin print, printed later

Paper size: 50.45 x 40.5 cm

Image size: 40.2 x 38 cm

(022-ECW)

[View detail](#)

\$ 4,600.00 ex. VAT



**Ernest C. Withers**

*Roscoe Gordon and Sam Phillips, Sun Records, early 1950's*

Signed by the artist in pencil on the verso. Annotations in pencil on the verso.

Silver gelatin print, printed later

Paper size: 35.4 x 27.8 cm

Image size: 31.4 x 25.1 cm

(002-ECW)

[View detail](#)

\$ 4,000.00 ex. VAT

ERNEST C. WITHERS

*Mule Train leaves for Washington, Poor People's March, Marks, MS May, 1968*



Signed by the artist in pencil on the verso. Annotations in pencil on the verso.

Silver gelatin print, printed later

Paper size: 40.4 x 50.3 cm

Image size: 32.8 x 37.7 cm

(023-ECW)



ERNEST C. WITHERS

*I Am a Man: Sanitation Workers Strike, Memphis, TN, 1968*



Signed by the artist in pencil on the verso. Annotations in pencil on the verso.

Silver gelatin print, printed later

Paper size: 50.75 x 60.7 cm

Image size: 32.9 x 56.8 cm

(025-ECW)

ERNEST C. WITHERS

*Corner of Hernando and Beale St., at the time of Dr. Martin Luther King's last march. Memphis, 1968.*



Signed by the artist in pencil on the verso. Annotations in pencil on the verso.

Silver gelatin print, printed later

Paper size: 40.35 x 50.4 cm

Image size: 35.1 x 45.2 cm

(024-ECW)



ERNEST C. WITHERS

*First press conference of the March Against Fear, announcing Martin Luther King, Jr., taking over after Meredith was shot, basement, United Methodist Church, with Floyd McKissick, Stokely Carmichael and others, Memphis, TN 1966*



Signed by the artist in pencil on the verso. Annotations in pencil on the verso.

Silver gelatin print, printed later

Paper size: 60.5 x 50.75 cm

Image size: 45.2 x 45.5 cm

(026-ECW)

£ 6,000.00 ex. VAT



ERNEST C. WITHERS

*Dr. Martin Luther King Jr. and Rev. Ralph Abernathy ride on one of the first desegregated buses, Montgomery, AL, December 21, 1956*



Signed by the artist in pencil on the verso. Annotations in pencil on the verso.

Silver gelatin print, printed later

Paper size: 27.8 x 35.5 cm

Image size: 25.3 x 30.9 cm

(005-ECW)

£ 2,600.00 ex. VAT

ERNEST C. WITHERS

*Bumper sticker campaign organized by the Regional Council of Negro Leadership, Mound df Bayou, MS, founded by Dr. T.R.M Howard, Memphis, TN, 1952*



Signed by the artist in pencil on the verso. Annotations in pencil on the verso.

Silver gelatin print, printed later

Paper size: 40.6 x 50.45 cm

Image size: 37.9 x 47.9 cm

(014-ECW)

£ 3,700.00 ex. VAT



ERNEST C. WITHERS

*Ernest C. Withers in front of his delivery van, 1941 Ford Wagon, late 1940's*



Signed by the artist in pencil on the verso. Annotations in pencil on the verso.

Silver gelatin print, printed later

Paper size: 27.8 x 35.35 cm

Image size: 24 x 32.8 cm

(007-ECW)

£ 3,300.00 ex. VAT

ERNEST C. WITHERS  
*Twins at WDIA, 1948*

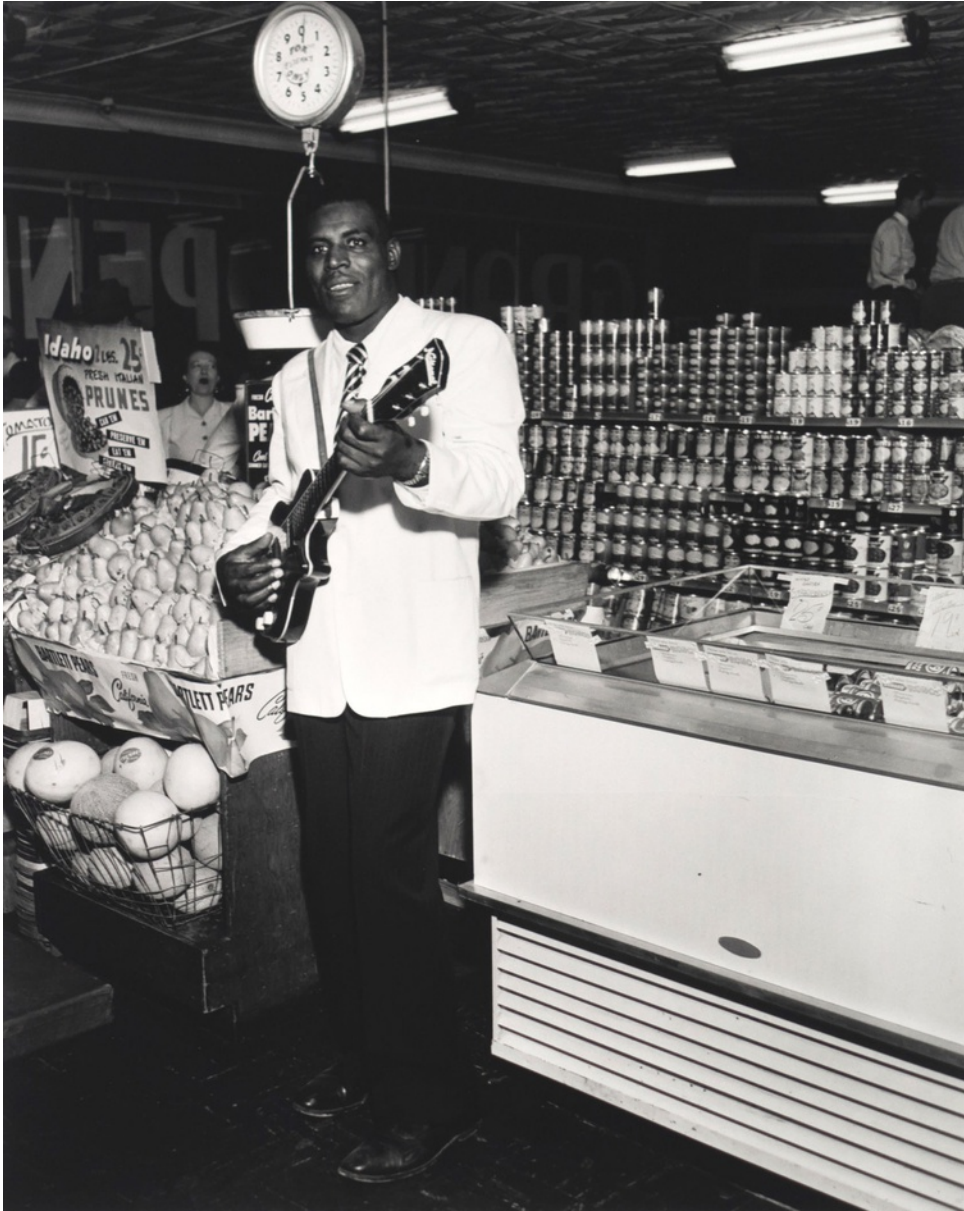


Signed by the artist in pencil on the verso. Annotations in pencil on the verso.  
Silver gelatin print, printed later  
Paper size: 35.3 x 27.9 cm  
Image size: 32.8 x 25.4 cm  
(001-ECW)



ERNEST C. WITHERS

*Howlin' Wolf, Memphis grocery store, ca 1951*



Signed by the artist in pencil on the verso. Annotations in pencil on the verso.

Silver gelatin print, printed later

Paper size: 35.4 x 27.8 cm

Image size: 31.35 x 25.1 cm

(004-ECW)

ERNEST C. WITHERS

*Al Green, Mid-south Coliseum, August 1973*



Signed by the artist in pencil on the verso. Annotations in pencil on the verso.

Silver gelatin print, printed later

Paper size: 50.4 x 40.6 cm

Image size: 48.1 x 32.35 cm

(021-ECW)

\$ 4,600.00 ex. VAT



ERNEST C. WITHERS

*James Brown, Mod-South Coliseum, Memphis, TN, ca 1975*



Signed by the artist in pencil on the verso. Annotations in pencil on the verso.

Silver gelatin print, printed later

Paper size: 35.35 x 27.9 cm

Image size: 25.2 x 25.6 cm

(006-ECW)

\$ 3,600.00 ex. VAT

ERNEST C. WITHERS

*Evelyn Young, BB King, Bill Harvey, Club Handy, ca 1951*



Signed by the artist in pencil on the verso. Annotations in pencil on the verso.

Silver gelatin print, printed later

Paper size: 50.5 x 40.6 cm

Image size: 47.9 x 38 cm

(020-ECW)

\$ 4,600.00 ex. VAT



ERNEST C. WITHERS

*Big Maybelle with Rufus Thomas (to her left), 1950's*



Signed by the artist in pencil on the verso. Annotations in pencil on the verso.

Silver gelatin print, printed later

Paper size: 27.85 x 35.4 cm

Image size: 19.3 x 32.8 cm

(010-ECW)

\$ 4,500.00 ex. VAT

ERNEST C. WITHERS

*Elvis Presley, Nick Adams with the Lausky Brothers, 1958*



Signed by the artist in pencil on the verso. Annotations in pencil on the verso.

Silver gelatin print, printed later

Paper size: 27.85 x 35.4 cm

Image size: 25.25 x 32.65 cm

(009-ECW)

£ 4,000.00 ex. VAT

ERNEST C. WITHERS

*Elvis backstage, WDIA Goodwill Revue, Ellis Auditorium, December 7 1956, (Carla Thomas in front)*



Signed by the artist in pencil on the verso. Annotations in pencil on the verso.

Silver gelatin print, printed later

Paper size: 35.4 x 27.8 cm

Image size: 31.4 x 25.1 cm

(003-ECW)



ERNEST C. WITHERS

*B.B. King performing at night club May, 1970*



Signed by the artist in pencil on the verso. Annotations in pencil on the verso.

Silver gelatin print, printed later

Paper size: 40.4 x 50.5 cm

Image size: 37.9 x 46 cm

(016-ECW)

\$ 5,500.00 ex. VAT



ERNEST C. WITHERS

*B.B. King's Tour Bus, "Big Red", Beale Street, ca. 1956*



Signed by the artist in pencil on the verso. Annotations in pencil on the verso.

Silver gelatin print, printed later

Paper size: 27.8 x 35.4 cm

Image size: 19.2 x 32.85 cm

(011-ECW)

£ 3,300.00 ex. VAT

ERNEST C. WITHERS

*B.B. King and Ray Charles, mid 1950's*



Signed by the artist in pencil on the verso. Annotations in pencil on the verso.

Silver gelatin print, printed later

Paper size: 50.4 x 40.5 cm

Image size: 47.5 x 37.9 cm

(019-ECW)

£ 3,700.00 ex. VAT

ERNEST C. WITHERS

*Ray Charles and Hank Crawford performing at City Auditorium, ca. 1961*



Signed by the artist in pencil on the verso. Annotations in pencil on the verso.

Silver gelatin print, printed later

Paper size: 50.4 x 40.5 cm

Image size: 45.5 x 35.95 cm

(018-ECW)

£ 3,700.00 ex. VAT



ERNEST C. WITHERS

*Rhythm 'n' Blues Revue, on the midway at the Cottonmaker's Jubilee in the Beale Street Auditorium Park, early 1950's*



Signed by the artist in pencil on the verso. Annotations in pencil on the verso.

Silver gelatin print, printed later

Paper size: 50.5 x 40.5 cm

Image size: 37.8 x 38 cm

(015-ECW)

\$ 5,500.00 ex. VAT

ERNEST C. WITHERS

*Waitresses and juke box, Plantation Inn, West Memphis, TN, 1950's*



Signed by the artist in pencil on the verso. Annotations in pencil on the verso.

Silver gelatin print, printed later

Paper size: 40.6 x 50.6 cm

Image size: 38 x 47.9 cm

(013-ECW)

£ 6,500.00 ex. VAT



ERNEST C. WITHERS

*Albert King, Club Paradise, early 1960's*



Signed by the artist in pencil on the verso. Annotations in pencil on the verso.

Silver gelatin print, printed later

Paper size: 40.6 x 50.5 cm

Image size: 32.9 x 48 cm

(012-ECW)

£ 4,500.00 ex. VAT



ERNEST C. WITHERS

*Tina Turner, Ike and Tina Revue, Club Paradise, 1962*



Signed by the artist in pencil on the verso. Annotations in pencil on the verso.

Silver gelatin print, printed later

Paper size: 27.85 x 35.4 cm

Image size: 25.2 x 30.25 cm

(008-ECW)

\$ 4,000.00 ex. VAT

ERNEST C. WITHERS

*Bobby "Blue" Bland, Club Handy, Memphis, TN, late 1950s*



Signed by the artist in pencil on the verso. Annotations in pencil on the verso.

Silver gelatin print, printed later

Paper size: 50.45 x 40.5 cm

Image size: 40.2 x 38 cm

(022-ECW)

\$ 4,600.00 ex. VAT



ERNEST C. WITHERS

*Roscoe Gordon and Sam Phillips, Sun Records, early 1950's*



Signed by the artist in pencil on the verso. Annotations in pencil on the verso.

Silver gelatin print, printed later

Paper size: 35.4 x 27.8 cm

Image size: 31.4 x 25.1 cm

(002-ECW)

\$ 4,000.00 ex. VAT



Ernest C. Withers (1922-2007) was an African-American photojournalist.

He is best known for capturing over six decades of African-American history in the segregated South as well as key musicians that defined the genre; the Memphis Blues.

Throughout the 1950's, Withers was, in his own words, 'a news photographer', 'recording events that were taking place.' Momentous events were occurring, and he recorded them for African-American newspapers across the country. During the 1950's and 1960's, Withers travelled throughout the South with Dr. Martin Luther King Jr., James Meredith, Medgar Evers and other leaders of the Civil Rights movement. He provided images that made the dramatic stories of the era – a vivid Dr. King riding the first desegregated bus in Montgomery, murders of Civil Rights workers, voter registration drives, lynchings and the powerful Memphis Sanitation Workers Strike. The result is an encompassing and moving chronicle of the great American crusades of the second half of the Twentieth Century.

Withers' photographs also proclaim the wealth of Memphis' musical talent. They showcase the Rock and Roll and blues that emerged from the city's gospel, as well as blues, musical tradition. Given the relentless segregation, it was white musicians such as Elvis or Johnny Cash or Jerry Lee Lewis who brought the Memphis sound to the attention of the nation. Withers photographs document the sound that was the product of the city's black musical culture that went on to influence the world.

Prices shown exclude VAT and framing