

MENDES WOOD DM

GIANGIACOMO ROSSETTI&NBSP;

Booth 5C-26

Brussels Expo, Halls 5 & 6

Place de la Belgique 1

1020 Brussels Belgium

20/04 — 23/04 2023

For full details and larger images, please see the end of this document.



Giangiacomo Rossetti

NYC purple, 2023

monotype on Rives BFK paper

image:

29.2 x 21.6 cm

11 1/2 x 8 1/2 in

framed:

57.15 x 40.64 cm

22 1/5 x 16 in

(MW.GRO.069)

[View detail](#)



Giangiacomo Rossetti

NYC purple, 2022

monotype on Rives BFK paper

image:

29.2 x 21.6 cm

11 1/2 x 8 1/2 in

framed:

57.15 x 40.64 cm

22 1/5 x 16 in

(MW.GRO.042)

[View detail](#)



Giangiacomo Rossetti

NYC purple, 2023

monotype on Rives BFK paper

image:

29.2 x 21.6 cm

11 1/2 x 8 1/2 in

framed:

57.15 x 40.64 cm

22 1/5 x 16 in

(MW.GRO.070)

[View detail](#)



Giangiacomo Rossetti

NYC purple, 2023

monotype on Rives BFK paper

Image:

29.2 x 21.6 cm

11 1/2 x 8 1/2 in

Frame:

57.15 x 40.64 cm

22 1/5 x 16 in

(MW.GRO.074)

[View detail](#)



Giangiacomo Rossetti

NYC purple, 2023

monotype on Rives BFK paper

Image:

29.2 x 21.6 cm

11 1/2 x 8 1/2 in

Frame:

57.15 x 40.64 cm

22 1/5 x 16 in

(MW.GRO.071)

[View detail](#)



Giangiacomo Rossetti

NYC purple, 2023

monotype on Rives BFK paper

Image:

29.2 x 21.6 cm

11 1/2 x 8 1/2 in

Frame:

57.15 x 40.64 cm

22 1/5 x 16 in

(MW.GRO.072)

[View detail](#)



Giangiacomo Rossetti

NYC purple, 2023

monotype on Rives BFK paper

image:

29.2 x 21.6 cm

11 1/2 x 8 1/2 in

framed:

57.15 x 40.64 cm

22 1/5 x 16 in

(MW.GRO.068)

[View detail](#)



Giangiacomo Rossetti

NYC purple, 2023

monotype on Rives BFK paper

image:

29.2 x 21.6 cm

11 1/2 x 8 1/2 in

framed:

57.15 x 40.64 cm

22 1/5 x 16 in

(MW.GRO.075)

[View detail](#)



Giangiacomo Rossetti

NYC purple, 2022

monotype on Rives BFK paper

image:

29.2 x 21.6 cm

11 1/2 x 8 1/2 in

framed:

57.15 x 40.64 cm

22 1/5 x 16 in

(MW.GRO.044)

[View detail](#)



Giangiacomo Rossetti

NYC purple, 2023

monotype on Rives BFK paper

Image:

29.2 x 21.6 cm

11 1/2 x 8 1/2 in

Frame:

57.15 x 40.64 cm

22 1/5 x 16 in

(MW.GRO.076)

[View detail](#)



Giangiacomo Rossetti

NYC purple, 2023

monotype on Rives BFK paper

image:

29.2 x 21.6 cm

11 1/2 x 8 1/2 in

framed:

57.15 x 40.64 cm

22 1/5 x 16 in

(MW.GRO.073)

[View detail](#)



Giangiacomo Rossetti

NYC purple, 2022

monotype on Rives BFK paper

image:

29.2 x 21.6 cm

11 1/2 x 8 1/2 in

framed:

57.15 x 40.64 cm

22 1/5 x 16 in

(MW.GRO.041)

[View detail](#)



Giangiacomo Rossetti

NYC purple, 2023

monotype on Rives BFK paper

image:

29.2 x 21.6 cm

11 1/2 x 8 1/2 in

framed:

57.15 x 40.64 cm

22 1/5 x 16 in

(MW.GRO.077)

[View detail](#)



Giangiacomo Rossetti

NYC purple, 2023

monotype on Rives BFK paper

Image:

29.2 x 21.6 cm

11 1/2 x 8 1/2 in

Frame:

57.15 x 40.64 cm

22 1/5 x 16 in

(MW.GRO.078)

[View detail](#)



Giangiacomo Rossetti

NYC purple, 2023

monotype on Rives BFK paper

Image:

29.2 x 21.6 cm

11 1/2 x 8 1/2 in

Frame:

57.15 x 40.64 cm

22 1/5 x 16 in

(MW.GRO.079)

[View detail](#)



Giangiacomo Rossetti

My taste for the nightlife, 2023

oil on panel

30 x 25 cm

11 3/4 x 9 7/8 in

(MW.GRO.080)

[View detail](#)

GIANGIACOMO ROSSETTI
NYC purple, 2023



monotype on Rives BFK paper

image:

29.2 x 21.6 cm

11 1/2 x 8 1/2 in

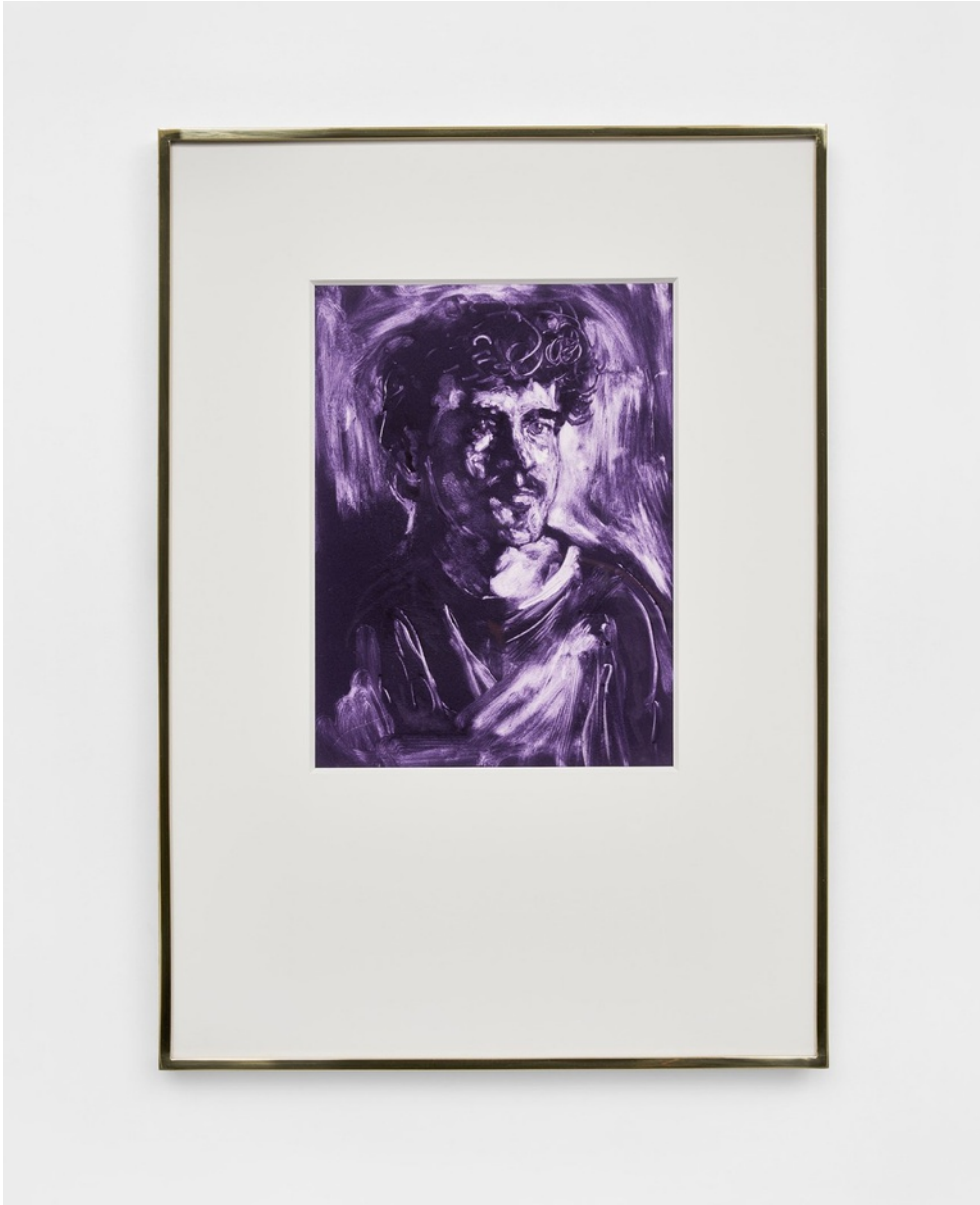
framed:

57.15 x 40.64 cm

22 1/5 x 16 in

(MW.GRO.069)

GIANGIACOMO ROSSETTI
NYC purple, 2022



monotype on Rives BFK paper

image:

29.2 x 21.6 cm

11 1/2 x 8 1/2 in

framed:

57.15 x 40.64 cm

22 1/5 x 16 in

(MW.GRO.042)

GIANGIACOMO ROSSETTI
NYC purple, 2023



monotype on Rives BFK paper

image:

29.2 x 21.6 cm

11 1/2 x 8 1/2 in

framed:

57.15 x 40.64 cm

22 1/5 x 16 in

(MW.GRO.070)

GIANGIACOMO ROSSETTI
NYC purple, 2023



monotype on Rives BFK paper

Image:

29.2 x 21.6 cm

11 1/2 x 8 1/2 in

Frame:

57.15 x 40.64 cm

22 1/5 x 16 in

(MW.GRO.074)

GIANGIACOMO ROSSETTI
NYC purple, 2023



monotype on Rives BFK paper

Image:

29.2 x 21.6 cm

11 1/2 x 8 1/2 in

Frame:

57.15 x 40.64 cm

22 1/5 x 16 in

(MW.GRO.071)

GIANGIACOMO ROSSETTI
NYC purple, 2023



monotype on Rives BFK paper

Image:

29.2 x 21.6 cm

11 1/2 x 8 1/2 in

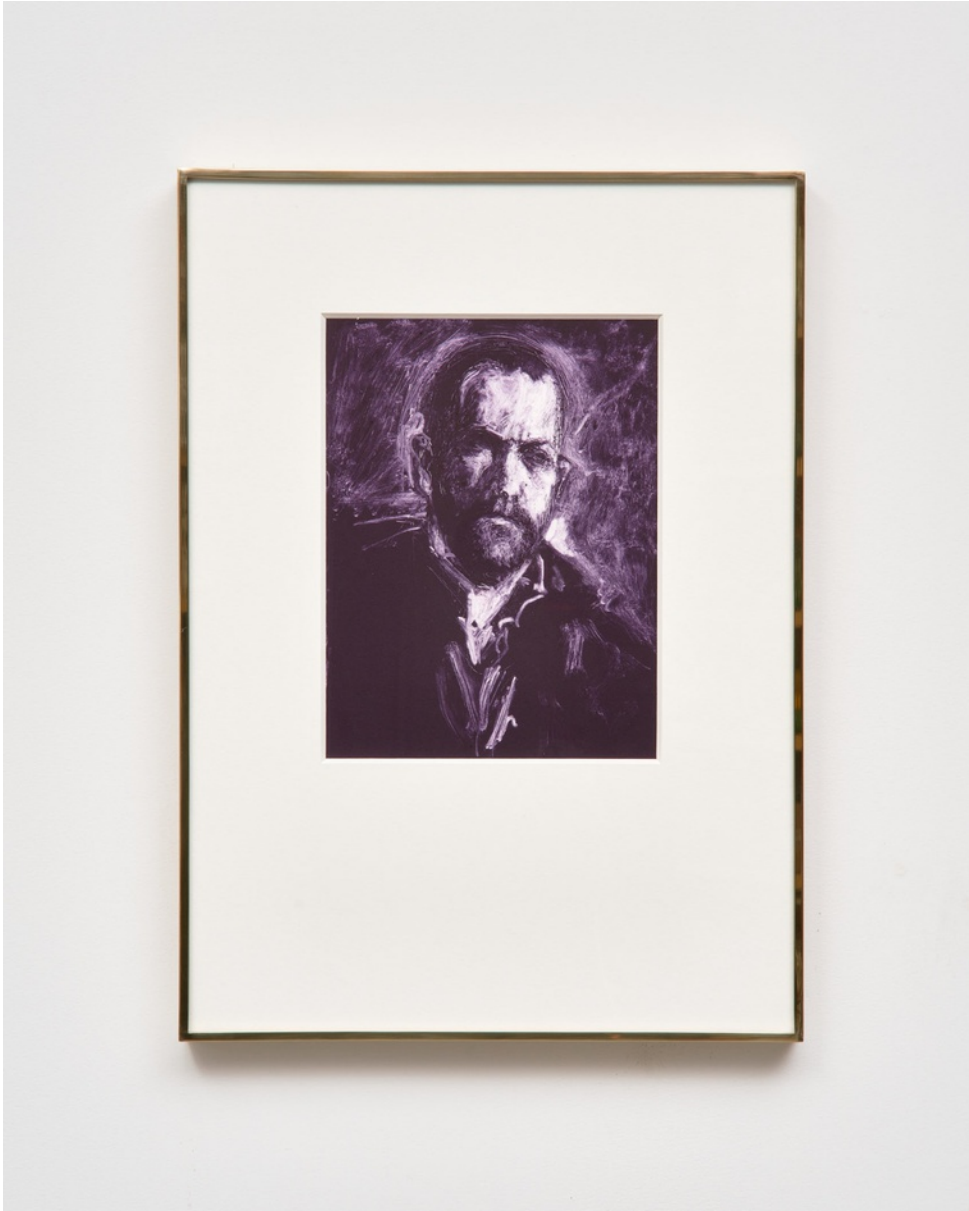
Frame:

57.15 x 40.64 cm

22 1/5 x 16 in

(MW.GRO.072)

GIANGIACOMO ROSSETTI
NYC purple, 2023



monotype on Rives BFK paper

image:

29.2 x 21.6 cm

11 1/2 x 8 1/2 in

framed:

57.15 x 40.64 cm

22 1/5 x 16 in

(MW.GRO.068)

GIANGIACOMO ROSSETTI
NYC purple, 2023



monotype on Rives BFK paper

image:

29.2 x 21.6 cm

11 1/2 x 8 1/2 in

framed:

57.15 x 40.64 cm

22 1/5 x 16 in

(MW.GRO.075)

GIANGIACOMO ROSSETTI
NYC purple, 2022



monotype on Rives BFK paper

image:

29.2 x 21.6 cm

11 1/2 x 8 1/2 in

framed:

57.15 x 40.64 cm

22 1/5 x 16 in

(MW.GRO.044)

GIANGIACOMO ROSSETTI
NYC purple, 2023



monotype on Rives BFK paper

Image:

29.2 x 21.6 cm

11 1/2 x 8 1/2 in

Frame:

57.15 x 40.64 cm

22 1/5 x 16 in

(MW.GRO.076)

GIANGIACOMO ROSSETTI
NYC purple, 2023



monotype on Rives BFK paper

image:

29.2 x 21.6 cm

11 1/2 x 8 1/2 in

framed:

57.15 x 40.64 cm

22 1/5 x 16 in

(MW.GRO.073)

GIANGIACOMO ROSSETTI
NYC purple, 2022



monotype on Rives BFK paper

image:

29.2 x 21.6 cm

11 1/2 x 8 1/2 in

framed:

57.15 x 40.64 cm

22 1/5 x 16 in

(MW.GRO.041)

GIANGIACOMO ROSSETTI
NYC purple, 2023



monotype on Rives BFK paper

image:

29.2 x 21.6 cm

11 1/2 x 8 1/2 in

framed:

57.15 x 40.64 cm

22 1/5 x 16 in

(MW.GRO.077)

GIANGIACOMO ROSSETTI
NYC purple, 2023



monotype on Rives BFK paper

Image:

29.2 x 21.6 cm

11 1/2 x 8 1/2 in

Frame:

57.15 x 40.64 cm

22 1/5 x 16 in

(MW.GRO.078)

GIANGIACOMO ROSSETTI
NYC purple, 2023



monotype on Rives BFK paper

Image:

29.2 x 21.6 cm

11 1/2 x 8 1/2 in

Frame:

57.15 x 40.64 cm

22 1/5 x 16 in

(MW.GRO.079)

GIANGIACOMO ROSSETTI
My taste for the nightlife, 2023



oil on panel
30 x 25 cm
11 3/4 x 9 7/8 in
(MW.GRO.080)

For this year's edition of Art Brussels, **Mendes Wood DM** is presenting a special project by **Giangiaco Rossetti** that will take over part of the booth at the fair. Rossetti will be showing a recently developed body of works all titled *NYC purple*, a series of subtraction monotypes – 15 portraits of characters from his milieu in New York City.

The subtraction monotype technique is one favored by many painters throughout art history starting with Benedetto Castiglione experimentations and going from Rembrandt to Degas until present times. Rather than adding color directly to the paper, this technique works through subtraction, where the ink is layered over a glass or metal plate to be then removed with different tools until the image is formed. The amount of ink left on the plate is enough to print a unique artwork.

Rossetti has kept a kind of painterly quality in this series, in which each subject appears to be lit by a voluptuous light, emphasizing the artist's skill and precision, but also finding resonance with the only painting in the presentation, which act as a counterpoint to the monotypes. Taking inspiration from Bronzino's *Descent of Christ into Limbo* (1552), Rossetti's metaphysical composition depicts the miraculous appearance of a figure above the artist's desk.

You can find more information about the others artists exhibited at the fair by clicking [here](#).

Giangiaco Rossetti (b. 1989, Milan, Italy) lives and works in New York.

Rossetti attended the Accademia di Belle Arti di Brera in Milan and in 2019 graduated from Die Institut Kunst FHNW in Basel. His solo exhibitions include *Giangiaco Rossetti*, The Power Station, Dallas (2023); *Trabalhos grandes / Big paintings*, Mendes Wood DM, São Paulo (2022); *The Unfun*, Federico Vavassori, Milan (2021); *Tower 1*, Fiorucci Art Trust, London (2021); *Le Fantasie*, Greene Naftali, New York (2020); *Bones of the Men*, Mendes Wood DM, Brussels (2019); *DEEPSTARIA ENIGMATICA*, Riverside, Bern (2018); *KRIS*, Federico Vavassori, Milan (2017); and *Bellarmina*, Warm, São Paulo (2016).

His work has been featured in several group exhibitions such as *Expressions with Fractions*, Castello di Rivoli Museo d'Arte Contemporanea, Rivoli (2022); *A Maze Zanine, Amaze Zaning, A-Mezzaning, Meza-9*, David Zwirner, New York (2022); *Luncheon on the Grass*, Jeffrey Deitch, Los Angeles (2022); *Pittura in persona. La nuova Collezione della Fondazione CRC*, Fondazione CRC, Cuneo (2021); *Winterfest: An Exhibition of Arts and Crafts*, Aspen Art Museum, Aspen (2020); *Yellow Opening*, Mendes Wood DM at d'Ouwe Kerk, Retranchement (2020); *Prelude: Melancholy of the Future*, Museum Dhondt-Dhaenens, Ghent (2020); *This Corrosion*, Modern Art, London (2020); *Techniques of the Observer*, Greene Naftali, New York (2019); *Nightfall*, Mendes Wood DM, Brussels (2018); and *Tra l'inquietudine e il Martello*, Federico Vavassori, Milan (2018).

Collections

Christen Sveaas Art Foundation (Kistefos Museum)

THE EKARD COLLECTION

Fiorucci Art Trust

Pinault Collection