

# LEO KOENIG INC.

## ALTERED STATES CHECKLIST

For full details and larger images, please see the end of this document.



On Kawara  
Dec. 28, 1980, 1980  
DEC.28,1980. "TODAY" Series No.40, 1980. Painted by  
On Kawara in New York City. Liquitex on canvas.  
8 x 10 in. (20.5 x 25.5 cm.)  
(OK\_032)

[View detail](#)



Tony Matelli  
Lion (Pizza), 2019  
Glass fiber reinforced concrete, marble dust, mineral pigments,  
stainless steel, cast urethane, paint  
33 x 61 x 16 inches  
(TM\_251)

[View detail](#)



Lorenzo Amos  
Sorrow (After Vincent), 2024  
oil on canvas  
80 x 107 in.  
(LAMOS\_001)

[View detail](#)



Lorenzo Amos  
Northwest Wall #1, 2025  
oil on canvas  
107 x 80 in  
(LAMOS\_003)

[View detail](#)



Thomas Schutte  
 Eierkopf halb, 2014  
 glazed ceramic on artist's base  
 glazed ceramic on artist's base  
 sculpture: 7 x 14 11/16 x 9 7/8 inches  
 (17.8 x 37.3 x 25.1 cm)  
 base: 44 x 17 3/4 x 13 3/4 inches  
 (111.8 x 45.1 x 34.9)

[View detail](#)

(TSCH\_008)



Thomas Schutte  
 Eierkopf halb, 2014  
 glazed ceramic on artist's base  
 7 1/4 x 13 1/2 x 9 15/16 in.  
 (18.4 x 34.3 x 25.2 cm)  
 base: 44 x 17 3/4 x 13 3/4 inches  
 (111.8 x 45.1 x 34.9)  
 (TSCH\_007)

[View detail](#)



Thomas Schütte  
 Egg Head, Half, 2014  
 glazed ceramic on MDF base  
 (TSCH\_003)

[View detail](#)



Ser Serpas  
 Untitled, 2023  
 oil on canvas  
 88 x 85 in  
 223.5 x 215.9 cm  
 (SER\_001)

[View detail](#)



Ser Serpas  
 Untitled , 2023  
 Oil on canvas  
 40 1/8 x 67 1/2 in  
 101.9 x 171.4 cm  
 (SER\_002)

[View detail](#)



Sherrie Levine  
 Three Works: Untitled, 1998  
 wax crayon and graphite on wood  
 12 1/4 x 15 in. (31 x 38 cm)  
 (SLEV\_022)

[View detail](#)



Adam McEwen  
Energy Saving Bulb, 2010  
Energy Saving Bulb, 2010  
Graphite, light fixture

[View detail](#)

4 1/2 × 2 31/100 in | 11.4 × 5.9 cm  
edition of 10 + 2 AP  
(AMCEW\_010)



show continues upstairs

[View detail](#)



Adam McEwen  
Payphone, 2018  
Graphite  
26 1/16 x 20 x 10 1/16 inches  
66.2 x 50.8 x 25.6 cm  
Ed. AP 1, from an edition of 3 + 2 APs  
(AMCEW\_009)

[View detail](#)



On Kawara  
Sept. 28, 1967, 1967  
SEPT. 28, 1967 "TODAY" Series No.136, 1967. Painted by  
On Kawara in New York City. Liquitex on canvas. 8"x10".  
liquitex on canvas  
8 x 10 in. (20.5 x 25.5 cm.)  
(OK\_027)

[View detail](#)



On Kawara  
Sept. 29, 1967, 1967  
SEPT. 29, 1967 "TODAY" Series No.137, 1967. Painted by  
On Kawara in New York City. Liquitex on canvas. 8"x10".  
liquitex on canvas  
8 x 10 in. (20.5 x 25.5 cm.)  
(OK\_026)

[View detail](#)



Tony Matelli  
Arrangement, 2024  
Painted bronze, stainless steel, epoxy  
21 x 9.5 x 6 in  
(TM\_620)

[View detail](#)



Adam McEwen  
Rolldown Gate, 2012

[View detail](#)

This work is number one from an edition of three plus two artist's proofs and is accompanied by a certificate of authenticity signed by the artist.

graphite  
101 x 45 x 14 in. (257.8 x 115.6 x 35.6 cm.)  
(AMCEW\_006)



Tony Matelli  
Arrangement , 2024

[View detail](#)

Painted bronze, stainless steel, epoxy  
(TM\_623)



On Kawara  
Dec. 13, 1980, 1980

[View detail](#)

DEC.13,1980. "TODAY" Series No.38, 1980. Painted by On Kawara in New York City. Liquitex on canvas. 8"x10".  
liquitex on canvas  
8 x 10 in. (20.5 x 25.5 cm.)  
(OK\_030)



Tony Matelli  
Yesterday, 2014

[View detail](#)

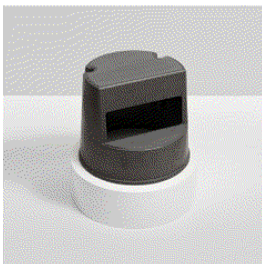
Painted bronze, steel, fiberglass, urethane, rub on transfers,  
mini keg, beer cans  
84 x 25 x 34 in  
(TM\_338)



On Kawara  
Nov. 13, 1979, 1979

[View detail](#)

DEC.13,1980. "TODAY" Series No.38, 1980. Painted by On Kawara in New York City. Liquitex on canvas. 8"x10".  
Liquitex on canvas  
8 x 10 in. (20.5 x 25.5 cm.)  
(OK\_029)



Adam McEwen  
Rubbermaid Step Stool, 2010

[View detail](#)

graphite  
sculpture 15 5/8 x 15 5/8 x 13 1/8 in. (39.7 x 39.7 x 33.3 cm)  
base 6 x 18 x 18 in. (15.2 x 45.7 x 45.7 cm)  
overall 21 5/8 x 18 x 18 in. (54.9 x 45.7 x 45.7 cm)  
this work is artist's proof 2 from an edition of 3 plus 2 artist's proofs.  
(AMCEW\_004)





Tony Matelli  
Dick, 2012  
Enamel on mirror  
72 x 48 in (182.9 x 121.9 cm)  
(TM\_029)

[View detail](#)



Sherrie Levine  
Light Bulb, 2000  
Signed with Initials and numbered 4/12 from an edition of 12  
Stainless Steel signed with Initials and Numbered  
9 X 20 X 9 CM - 3 1/2 X 7 7/8 X 3 1/2 IN.

[View detail](#)

(SLEV\_024)

ON KAWARA

Dec. 28, 1980, 1980



DEC.28,1980. "TODAY" Series No.40, 1980. Painted by  
On Kawara in New York City. Liquitex on canvas. 8"x10".

liquitex on canvas

8 x 10 in. (20.5 x 25.5 cm.)

(OK\_032)

Image 1/2



THE NEW YORK TIMES, SUNDAY, DECEMBER 28, 1990

# ALTERED STATES



Image 2/2



TONY MATELLI  
Lion (Pizza), 2019



Glass fiber reinforced concrete, marble dust, mineral pigments, stainless steel, cast urethane, paint  
33 x 61 x 16 inches  
(TM\_251)

Image 1/3



Image 2/3





Image 3/3



LORENZO AMOS  
Sorrow (After Vincent), 2024



oil on canvas  
80 x 107 in.  
(LAMOS\_001)



LORENZO AMOS  
Northwest Wall #1, 2025



oil on canvas  
107 x 80 in  
(LAMOS\_003)



THOMAS SCHUTTE  
Eierkopf halb, 2014



glazed ceramic on artist's base  
glazed ceramic on artist's base  
sculpture: 7 x 14 11/16 x 9 7/8 inches  
(17.8 x 37.3 x 25.1 cm)  
base: 44 x 17 3/4 x 13 3/4 inches  
(111.8 x 45.1 x 34.9)

(TSCH\_008)



THOMAS SCHUTTE  
Eierkopf halb, 2014



glazed ceramic on artist's base  
7 1/4 x 13 1/2 x 9 15/16 in.  
(18.4 x 34.3 x 25.2 cm)  
base: 44 x 17 3/4 x 13 3/4 inches  
(111.8 x 45.1 x 34.9  
(TSCH\_007)



THOMAS SCHÜTTE  
Egg Head, Half, 2014



glazed ceramic on MDF base  
(TSCH\_003)

Image 1/5



Image 2/5



Image 3/5



Image 4/5





Image 5/5



SER SERPAS  
Untitled, 2023



oil on canvas  
88 x 85 in  
223.5 x 215.9 cm  
(SER\_001)

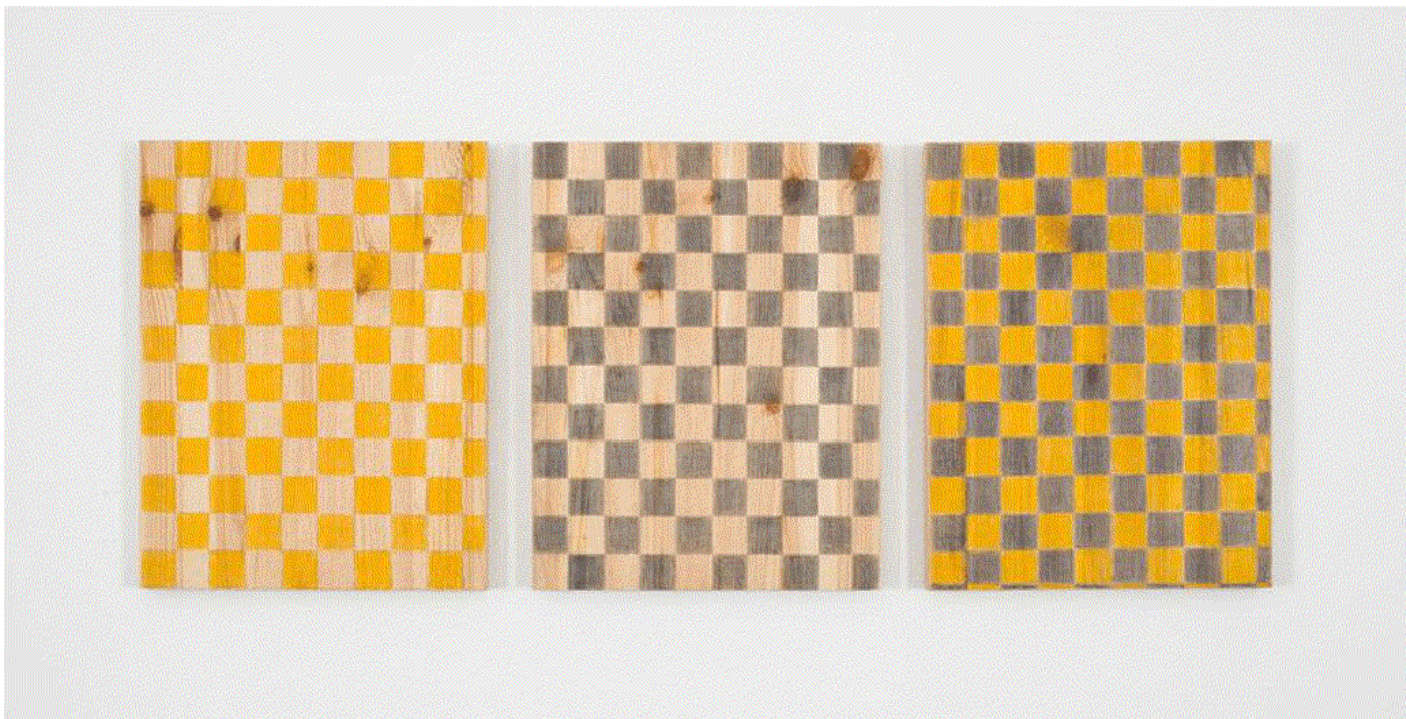
SER SERPAS  
Untitled , 2023



Oil on canvas  
40 1/8 x 67 1/2 in  
101.9 x 171.4 cm  
(SER\_002)



SHERRIE LEVINE  
Three Works: Untitled, 1998



wax crayon and graphite on wood  
12 1/4 x 15 in. (31 x 38 cm)  
(SLEV\_022)

ADAM MCEWEN  
Energy Saving Bulb, 2010



Energy Saving Bulb, 2010  
Graphite, light fixture

4 1/2 × 2 31/100 in | 11.4 × 5.9 cm  
edition of 10 + 2 AP  
(AMCEW\_010)



SHOW CONTINUES UPSTAIRS

# CHECKLIST

## 2<sup>nd</sup> FL



ADAM MCEWEN  
Payphone, 2018



Graphite  
26 1/16 x 20 x 10 1/16 inches  
66.2 x 50.8 x 25.6 cm  
Ed. AP 1, from an edition of 3 + 2 APs  
(AMCEW\_009)

ON KAWARA  
Sept. 28, 1967, 1967



SEPT. 28, 1967 "TODAY" Series No.136, 1967. Painted by  
On Kawara in New York City. Liquitex on canvas. 8"x10".  
liquitex on canvas  
8 x 10 in. (20.5 x 25.5 cm.)  
(OK\_027)

Image 1/2

London D. Everett<sup>2</sup> Dead  
Super Breath of Poetry C

Journal of Polymer Science: Polymer Chemistry Edition  
 Vol. 22, 1984  
 Copyright © 1984 John Wiley & Sons, Inc.  
 Printed in the United States of America  
 0360-6376/84/0022-1111\$01.00

1. The author is a member of the American Psychological Association and the American Psychiatric Association.

From 1970 to 1975, the number of people in the United States who were employed in the health care industry increased by 100 percent. This increase was due to a number of factors, including the aging of the population, the increasing incidence of chronic diseases, and the development of new medical technologies.

[illegible]

1. The first step is to identify the problem. This involves understanding the current situation and the goals that need to be achieved.

...the ...

For more information, call 1-800-368-2772. **Don't miss this special offer!** **Call today!**

© 1999 by The McGraw-Hill Companies, Inc. All rights reserved. This publication is protected by copyright. No part of this publication may be reproduced, stored in a retrieval system, or transmitted, in any form or by any means, electronic, mechanical, photocopying, recording, or by any information storage and retrieval system, without prior written permission from The McGraw-Hill Companies, Inc.

Location	Year	Population	Area (km <sup>2</sup> )	Population Density (per km <sup>2</sup> )
London	1991	2,540,000	1,579	1,610
London	2001	2,540,000	1,579	1,610
London	2011	2,540,000	1,579	1,610
London	2021	2,540,000	1,579	1,610
London	2031	2,540,000	1,579	1,610
London	2041	2,540,000	1,579	1,610
London	2051	2,540,000	1,579	1,610
London	2061	2,540,000	1,579	1,610
London	2071	2,540,000	1,579	1,610
London	2081	2,540,000	1,579	1,610
London	2091	2,540,000	1,579	1,610
London	2101	2,540,000	1,579	1,610
London	2111	2,540,000	1,579	1,610
London	2121	2,540,000	1,579	1,610
London	2131	2,540,000	1,579	1,610
London	2141	2,540,000	1,579	1,610
London	2151	2,540,000	1,579	1,610
London	2161	2,540,000	1,579	1,610
London	2171	2,540,000	1,579	1,610
London	2181	2,540,000	1,579	1,610
London	2191	2,540,000	1,579	1,610
London	2201	2,540,000	1,579	1,610
London	2211	2,540,000	1,579	1,610
London	2221	2,540,000	1,579	1,610
London	2231	2,540,000	1,579	1,610
London	2241	2,540,000	1,579	1,610
London	2251	2,540,000	1,579	1,610
London	2261	2,540,000	1,579	1,610
London	2271	2,540,000	1,579	1,610
London	2281	2,540,000	1,579	1,610
London	2291	2,540,000	1,579	1,610
London	2301	2,540,000	1,579	1,610
London	2311	2,540,000	1,579	1,610
London	2321	2,540,000	1,579	1,610
London	2331	2,540,000	1,579	1,610
London	2341	2,540,000	1,579	1,610
London	2351	2,540,000	1,579	1,610
London	2361	2,540,000	1,579	1,610
London	2371	2,540,000	1,579	1,610
London	2381	2,540,000	1,579	1,610
London	2391	2,540,000	1,579	1,610
London	2401	2,540,000	1,579	1,610
London	2411	2,540,000	1,579	1,610
London	2421	2,540,000	1,579	1,610
London	2431	2,540,000	1,579	1,610
London	2441	2,540,000	1,579	1,610
London	2451	2,540,000	1,579	1,610
London	2461	2,540,000	1,579	1,610
London	2471	2,540,000	1,579	1,610
London	2481	2,540,000	1,579	1,610
London	2491	2,540,000	1,579	1,610
London	2501	2,540,000	1,579	1,610
London	2511	2,540,000	1,579	1,610
London	2521	2,540,000	1,579	1,610
London	2531	2,540,000	1,579	1,610
London	2541	2,540,000	1,579	1,610
London	2551	2,540,000	1,579	1,610
London	2561	2,540,000	1,579	1,610
London	2571	2,540,000	1,579	1,610
London	2581	2,540,000	1,579	1,610
London	2591	2,540,000	1,579	1,610
London	2601	2,540,000	1,579	1,610
London	2611	2,540,000	1,579	1,610
London	2621	2,540,000	1,579	1,610
London	2631	2,540,000	1,579	1,610
London	2641	2,540,000	1,579	1,610

THE UNIVERSITY OF CHICAGO PRESS

1998, 1999, 2000, 2001, 2002, 2003, 2004, 2005, 2006, 2007, 2008, 2009, 2010, 2011, 2012, 2013, 2014, 2015, 2016, 2017, 2018, 2019, 2020, 2021, 2022, 2023, 2024, 2025, 2026, 2027, 2028, 2029, 2030, 2031, 2032, 2033, 2034, 2035, 2036, 2037, 2038, 2039, 2040, 2041, 2042, 2043, 2044, 2045, 2046, 2047, 2048, 2049, 2050, 2051, 2052, 2053, 2054, 2055, 2056, 2057, 2058, 2059, 2060, 2061, 2062, 2063, 2064, 2065, 2066, 2067, 2068, 2069, 2070, 2071, 2072, 2073, 2074, 2075, 2076, 2077, 2078, 2079, 2080, 2081, 2082, 2083, 2084, 2085, 2086, 2087, 2088, 2089, 2090, 2091, 2092, 2093, 2094, 2095, 2096, 2097, 2098, 2099, 2100, 2101, 2102, 2103, 2104, 2105, 2106, 2107, 2108, 2109, 2110, 2111, 2112, 2113, 2114, 2115, 2116, 2117, 2118, 2119, 2120, 2121, 2122, 2123, 2124, 2125, 2126, 2127, 2128, 2129, 2130, 2131, 2132, 2133, 2134, 2135, 2136, 2137, 2138, 2139, 2140, 2141, 2142, 2143, 2144, 2145, 2146, 2147, 2148, 2149, 2150, 2151, 2152, 2153, 2154, 2155, 2156, 2157, 2158, 2159, 2160, 2161, 2162, 2163, 2164, 2165, 2166, 2167, 2168, 2169, 2170, 2171, 2172, 2173, 2174, 2175, 2176, 2177, 2178, 2179, 2180, 2181, 2182, 2183, 2184, 2185, 2186, 2187, 2188, 2189, 2190, 2191, 2192, 2193, 2194, 2195, 2196, 2197, 2198, 2199, 2200, 2201, 2202, 2203, 2204, 2205, 2206, 2207, 2208, 2209, 2210, 2211, 2212, 2213, 2214, 2215, 2216, 2217, 2218, 2219, 2220, 2221, 2222, 2223, 2224, 2225, 2226, 2227, 2228, 2229, 2230, 2231, 2232, 2233, 2234, 2235, 2236, 2237, 2238, 2239, 2240, 2241, 2242, 2243, 2244, 2245, 2246, 2247, 2248, 2249, 2250, 2251, 2252, 2253, 2254, 2255, 2256, 2257, 2258, 2259, 2260, 2261, 2262, 2263, 2264, 2265, 2266, 2267, 2268, 2269, 2270, 2271, 2272, 2273, 2274, 2275, 2276, 2277, 2278, 2279, 2280, 2281, 2282, 2283, 2284, 2285, 2286, 2287, 2288, 2289, 2290, 2291, 2292, 2293, 2294, 2295, 2296, 2297, 2298, 2299, 2300, 2301, 2302, 2303, 2304, 2305, 2306, 2307, 2308, 2309, 2310, 2311, 2312, 2313, 2314, 2315, 2316, 2317, 2318, 2319, 2320, 2321, 2322, 2323, 2324, 2325, 2326, 2327, 2328, 2329, 2330, 2331, 2332, 2333, 2334, 2335, 2336, 2337, 2338, 2339, 2340, 2341, 2342, 2343, 2344, 2345, 2346, 2347, 2348, 2349, 2350, 2351, 2352, 2353, 2354, 2355, 2356, 2357, 2358, 2359, 2360, 2361, 2362, 2363, 2364, 2365, 2366, 2367, 2368, 2369, 2370, 2371, 2372, 2373, 2374, 2375, 2376, 2377, 2378, 2379, 2380, 2381, 2382, 2383, 2384, 2385, 2386, 2387, 2388, 2389, 2390, 2391, 2392, 2393, 2394, 2395, 2396, 2397, 2398, 2399, 2400, 2401, 2402, 2403, 2404, 2405, 2406, 2407, 2408, 2409, 2410, 2411, 2412, 2413, 2414, 2415, 2416, 2417, 2418, 2419, 2420, 2421, 2422, 2423, 2424, 2425, 2426, 2427, 2428, 2429, 2430, 2431, 2432, 2433, 2434, 2435, 2436, 2437, 2438, 2439, 2440, 2441, 2442, 2443, 2444, 2445, 2446, 2447, 2448, 2449, 2450, 2451, 2452, 2453, 2454, 2455, 2456, 2457, 2458, 2459, 2460, 2461, 2462, 2463, 2464, 2465, 2466, 2467, 2468, 2469, 2470, 2471, 2472, 2473, 2474, 2475, 2476, 2477, 2478, 2479, 2480, 2481, 2482, 2483, 2484, 2485, 2486, 2487, 2488, 2489, 2490, 2491, 2492, 2493, 2494, 2495, 2496, 2497, 2498, 2499, 2500, 2501, 2502, 2503, 2504, 2505, 2506, 2507, 2508, 2509, 2510, 2511, 2512, 2513, 2514, 2515, 2516, 2517, 2518, 2519, 2520, 2521, 2522, 2523, 2524, 2525, 2526, 2527, 2528, 2529, 2530, 2531, 2532, 2533, 2534, 2535, 2536, 2537, 2538, 2539, 2540, 2541, 2542, 2543, 2544, 2545, 2546, 2547, 2548, 2549, 2550, 2551, 2552, 2553, 2554, 2555, 2556, 2557, 2558, 2559, 2560, 2561, 2562, 2563, 2564, 2565, 2566, 2567, 2568, 2569, 2570, 2571, 2572, 2573, 2574, 2575, 2576, 2577, 2578, 2579, 2580, 2581, 2582, 2583, 2584, 2585, 2586, 2587, 2588, 2589, 2590, 2591, 2592, 2593, 2594, 2595, 2596, 2597, 2598, 2599, 2600, 2601, 2602, 2603, 2604, 2605, 2606, 2607, 2608, 2609, 2610, 2611, 2612, 2613, 2614, 2615, 2616, 2617, 2618, 2619, 2620, 2621, 2622, 2623, 2624, 2625, 2626, 2627, 2628, 2629, 2630, 2631, 2632, 2633, 2634, 2635, 2636, 2637, 2638, 2639, 2640, 2641, 2642, 2643, 2644, 2645, 2646, 2647, 2648, 2649, 2650, 2651, 2652, 2653, 2654, 2655, 2656, 2657, 2658, 2659, 2660, 2661, 2662, 2663, 2664, 2665, 2666, 2667, 2668, 2669, 2670, 2671, 2672, 2673, 2674, 2675, 2676, 2677, 2678, 2679, 26

\_\_\_\_\_

ON KAWARA  
Sept. 29, 1967, 1967



SEPT. 29, 1967 "TODAY" Series No.137, 1967. Painted by  
On Kawara in New York City. Liquitex on canvas. 8"x10".  
liquitex on canvas  
8 x 10 in. (20.5 x 25.5 cm.)  
(OK\_026)

Image 1/2



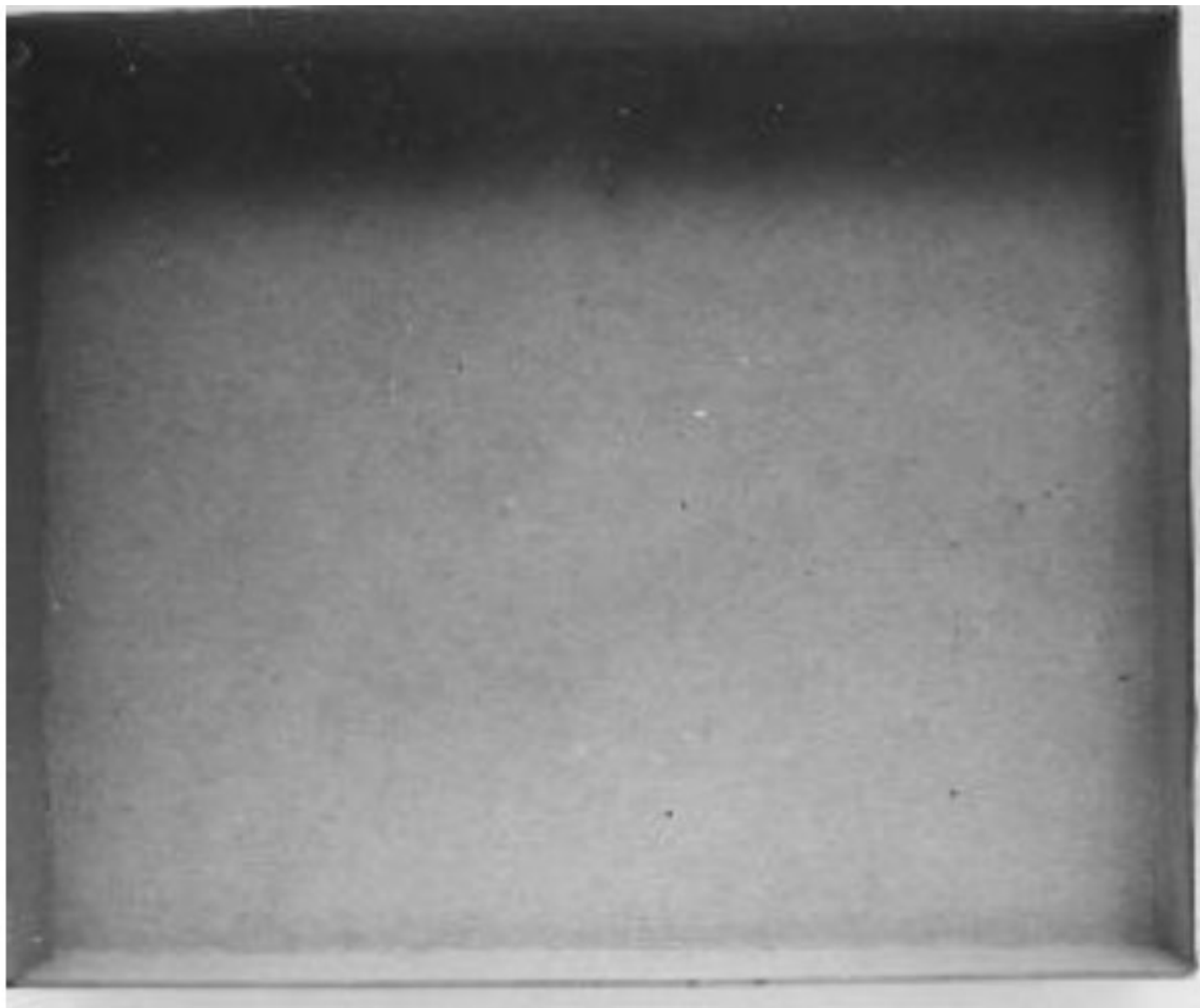


Image 2/2

TONY MATELLI  
Arrangement, 2024



Painted bronze, stainless steel, epoxy  
21 x 9.5 x 6 in  
(TM\_620)



ADAM MCEWEN  
Rolldown Gate, 2012



This work is number one from an edition of three plus two artist's proofs and is accompanied by a certificate of authenticity signed by the artist.

graphite

101 x 45 x 14 in. (257.8 x 115.6 x 35.6 cm.)

(AMCEW\_006)

TONY MATELLI  
Arrangement , 2024



Painted bronze, stainless steel, epoxy  
(TM\_623)



ON KAWARA

Dec. 13, 1980, 1980



DEC.13,1980. "TODAY" Series No.38, 1980. Painted by  
On Kawara in New York City. Liquitex on canvas. 8"x10".  
liquitex on canvas  
8 x 10 in. (20.5 x 25.5 cm.)  
(OK\_030)

Image 1/2

### Over-the-Counter Quotations

© 2004 Blackwell Publishing Ltd *Journal of Internal Medicine* 255: 101–107

The following is a list of the names of the persons who have been appointed to the various offices of the County of Los Angeles, California, for the year 1900, by the Board of Supervisors, at their regular meeting held on the 10th day of January, 1900.

Office	Name
County Clerk	John W. Smith
County Treasurer	James H. Brown
County Assessor	William C. Jones
County Engineer	Robert L. White
County Surveyor	Charles E. Black
County Jailor	Thomas A. Green
County Coroner	George F. Hall
County Sheriff	John D. King
County Auditor	Frank M. Lee
County Recorder	Edgar W. Clark
County Controller	Harold R. Adams
County Clerk of the Board of Supervisors	William B. Miller
County Clerk of the Board of Education	John F. Davis
County Clerk of the Board of Public Works	Robert G. Wilson
County Clerk of the Board of Health	Charles H. Moore
County Clerk of the Board of Charities	Thomas J. Taylor
County Clerk of the Board of Agriculture	George W. Baker
County Clerk of the Board of Commerce	John A. Nelson
County Clerk of the Board of Labor	Frank J. Hill
County Clerk of the Board of Social Welfare	Edgar A. Scott
County Clerk of the Board of Public Safety	Harold E. Green
County Clerk of the Board of Public Health	William F. King
County Clerk of the Board of Public Education	John C. Lee
County Clerk of the Board of Public Works	Robert D. Clark
County Clerk of the Board of Public Health	Charles F. Adams
County Clerk of the Board of Public Charities	Thomas G. Miller
County Clerk of the Board of Public Agriculture	George H. Davis
County Clerk of the Board of Public Commerce	John I. Wilson
County Clerk of the Board of Public Labor	Frank K. Hill
County Clerk of the Board of Public Social Welfare	Edgar L. Scott
County Clerk of the Board of Public Safety	Harold M. Green
County Clerk of the Board of Public Health	William N. King
County Clerk of the Board of Public Education	John O. Lee
County Clerk of the Board of Public Works	Robert P. Clark
County Clerk of the Board of Public Health	Charles Q. Adams
County Clerk of the Board of Public Charities	Thomas R. Miller
County Clerk of the Board of Public Agriculture	George S. Davis
County Clerk of the Board of Public Commerce	John T. Wilson
County Clerk of the Board of Public Labor	Frank U. Hill
County Clerk of the Board of Public Social Welfare	Edgar V. Scott
County Clerk of the Board of Public Safety	Harold W. Green
County Clerk of the Board of Public Health	William X. King
County Clerk of the Board of Public Education	John Y. Lee
County Clerk of the Board of Public Works	Robert Z. Clark
County Clerk of the Board of Public Health	Charles AA. Adams
County Clerk of the Board of Public Charities	Thomas BB. Miller
County Clerk of the Board of Public Agriculture	George CC. Davis
County Clerk of the Board of Public Commerce	John DD. Wilson
County Clerk of the Board of Public Labor	Frank EE. Hill
County Clerk of the Board of Public Social Welfare	Edgar FF. Scott
County Clerk of the Board of Public Safety	Harold GG. Green
County Clerk of the Board of Public Health	William HH. King
County Clerk of the Board of Public Education	John II. Lee
County Clerk of the Board of Public Works	Robert JJ. Clark
County Clerk of the Board of Public Health	Charles KK. Adams
County Clerk of the Board of Public Charities	Thomas LL. Miller
County Clerk of the Board of Public Agriculture	George MM. Davis
County Clerk of the Board of Public Commerce	John NN. Wilson
County Clerk of the Board of Public Labor	Frank OO. Hill
County Clerk of the Board of Public Social Welfare	Edgar PP. Scott
County Clerk of the Board of Public Safety	Harold QQ. Green
County Clerk of the Board of Public Health	William RR. King
County Clerk of the Board of Public Education	John SS. Lee
County Clerk of the Board of Public Works	Robert TT. Clark
County Clerk of the Board of Public Health	Charles UU. Adams
County Clerk of the Board of Public Charities	Thomas VV. Miller
County Clerk of the Board of Public Agriculture	George WW. Davis
County Clerk of the Board of Public Commerce	John XX. Wilson
County Clerk of the Board of Public Labor	Frank YY. Hill
County Clerk of the Board of Public Social Welfare	Edgar ZZ. Scott
County Clerk of the Board of Public Safety	Harold AA. Green
County Clerk of the Board of Public Health	William BB. King
County Clerk of the Board of Public Education	John CC. Lee
County Clerk of the Board of Public Works	Robert DD. Clark
County Clerk of the Board of Public Health	Charles EE. Adams
County Clerk of the Board of Public Charities	Thomas FF. Miller
County Clerk of the Board of Public Agriculture	George GG. Davis
County Clerk of the Board of Public Commerce	John HH. Wilson
County Clerk of the Board of Public Labor	Frank II. Hill
County Clerk of the Board of Public Social Welfare	Edgar JJ. Scott
County Clerk of the Board of Public Safety	Harold KK. Green
County Clerk of the Board of Public Health	William LL. King
County Clerk of the Board of Public Education	John MM. Lee
County Clerk of the Board of Public Works	Robert NN. Clark
County Clerk of the Board of Public Health	Charles OO. Adams
County Clerk of the Board of Public Charities	Thomas PP. Miller
County Clerk of the Board of Public Agriculture	George QQ. Davis
County Clerk of the Board of Public Commerce	John RR. Wilson
County Clerk of the Board of Public Labor	Frank SS. Hill
County Clerk of the Board of Public Social Welfare	Edgar TT. Scott
County Clerk of the Board of Public Safety	Harold UU. Green
County Clerk of the Board of Public Health	William VV. King
County Clerk of the Board of Public Education	John WW. Lee
County Clerk of the Board of Public Works	Robert XX. Clark
County Clerk of the Board of Public Health	Charles YY. Adams
County Clerk of the Board of Public Charities	Thomas ZZ. Miller
County Clerk of the Board of Public Agriculture	George AA. Davis
County Clerk of the Board of Public Commerce	John BB. Wilson
County Clerk of the Board of Public Labor	Frank CC. Hill
County Clerk of the Board of Public Social Welfare	Edgar DD. Scott
County Clerk of the Board of Public Safety	Harold EE. Green
County Clerk of the Board of Public Health	William FF. King
County Clerk of the Board of Public Education	John GG. Lee
County Clerk of the Board of Public Works	Robert HH. Clark
County Clerk of the Board of Public Health	Charles II. Adams
County Clerk of the Board of Public Charities	Thomas JJ. Miller
County Clerk of the Board of Public Agriculture	George KK. Davis
County Clerk of the Board of Public Commerce	John LL. Wilson
County Clerk of the Board of Public Labor	Frank MM. Hill
County Clerk of the Board of Public Social Welfare	Edgar NN. Scott
County Clerk of the Board of Public Safety	Harold OO. Green
County Clerk of the Board of Public Health	William PP. King
County Clerk of the Board of Public Education	John QQ. Lee
County Clerk of the Board of Public Works	Robert RR. Clark
County Clerk of the Board of Public Health	Charles SS. Adams
County Clerk of the Board of Public Charities	Thomas TT. Miller
County Clerk of the Board of Public Agriculture	George UU. Davis
County Clerk of the Board of Public Commerce	John VV. Wilson
County Clerk of the Board of Public Labor	Frank WW. Hill
County Clerk of the Board of Public Social Welfare	Edgar XX. Scott
County Clerk of the Board of Public Safety	Harold YY. Green
County Clerk of the Board of Public Health	William ZZ. King
County Clerk of the Board of Public Education	John AA. Lee
County Clerk of the Board of Public Works	Robert BB. Clark
County Clerk of the Board of Public Health	Charles CC. Adams
County Clerk of the Board of Public Charities	Thomas DD. Miller
County Clerk of the Board of Public Agriculture	George EE. Davis
County Clerk of the Board of Public Commerce	John FF. Wilson
County Clerk of the Board of Public Labor	Frank GG. Hill
County Clerk of the Board of Public Social Welfare	Edgar HH. Scott
County Clerk of the Board of Public Safety	Harold II. Green
County Clerk of the Board of Public Health	William JJ. King
County Clerk of the Board of Public Education	John KK. Lee
County Clerk of the Board of Public Works	Robert LL. Clark
County Clerk of the Board of Public Health	Charles MM. Adams
County Clerk of the Board of Public Charities	Thomas NN. Miller
County Clerk of the Board of Public Agriculture	George OO. Davis
County Clerk of the Board of Public Commerce	John PP. Wilson
County Clerk of the Board of Public Labor	Frank QQ. Hill
County Clerk of the Board of Public Social Welfare	Edgar RR. Scott
County Clerk of the Board of Public Safety	Harold SS. Green
County Clerk of the Board of Public Health	William TT. King
County Clerk of the Board of Public Education	John UU. Lee
County Clerk of the Board of Public Works	Robert VV. Clark
County Clerk of the Board of Public Health	Charles WW. Adams
County Clerk of the Board of Public Charities	Thomas XX. Miller
County Clerk of the Board of Public Agriculture	George YY. Davis
County Clerk of the Board of Public Commerce	John ZZ. Wilson
County Clerk of the Board of Public Labor	Frank AA. Hill
County Clerk of the Board of Public Social Welfare	Edgar BB. Scott
County Clerk of the Board of Public Safety	Harold CC. Green
County Clerk of the Board of Public Health	William DD. King
County Clerk of the Board of Public Education	John EE. Lee
County Clerk of the Board of Public Works	Robert FF. Clark
County Clerk of the Board of Public Health	Charles GG. Adams
County Clerk of the Board of Public Charities	Thomas HH. Miller
County Clerk of the Board of Public Agriculture	George II. Davis
County Clerk of the Board of Public Commerce	John JJ. Wilson
County Clerk of the Board of Public Labor	Frank KK. Hill
County Clerk of the Board of Public Social Welfare	Edgar LL. Scott
County Clerk of the Board of Public Safety	Harold MM. Green
County Clerk of the Board of Public Health	William NN. King
County Clerk of the Board of Public Education	John OO. Lee
County Clerk of the Board of Public Works	Robert PP. Clark
County Clerk of the Board of Public Health	Charles QQ. Adams
County Clerk of the Board of Public Charities	Thomas RR. Miller
County Clerk of the Board of Public Agriculture	George SS. Davis
County Clerk of the Board of Public Commerce	John TT. Wilson
County Clerk of the Board of Public Labor	Frank UU. Hill
County Clerk of the Board of Public Social Welfare	Edgar VV. Scott
County Clerk of the Board of Public Safety	Harold WW. Green
County Clerk of the Board of Public Health	William XX. King
County Clerk of the Board of Public Education	John YY. Lee
County Clerk of the Board of Public Works	Robert ZZ. Clark
County Clerk of the Board of Public Health	Charles AA. Adams
County Clerk of the Board of Public Charities	Thomas BB. Miller
County Clerk of the Board of Public Agriculture	George CC. Davis
County Clerk of the Board of Public Commerce	John DD. Wilson
County Clerk of the Board of Public Labor	Frank EE. Hill
County Clerk of the Board of Public Social Welfare	Edgar FF. Scott
County Clerk of the Board of Public Safety	Harold GG. Green
County Clerk of the Board of Public Health	William HH. King
County Clerk of the Board of Public Education	John II. Lee
County Clerk of the Board of Public Works	Robert JJ. Clark
County Clerk of the Board of Public Health	Charles KK. Adams
County Clerk of the Board of Public Charities	Thomas LL. Miller
County Clerk of the Board of Public Agriculture	George MM. Davis
County Clerk of the Board of Public Commerce	John NN. Wilson
County Clerk of the Board of Public Labor	Frank OO. Hill
County Clerk of the Board of Public Social Welfare	Edgar PP. Scott
County Clerk of the Board of Public Safety	Harold QQ. Green
County Clerk of the Board of Public Health	William RR. King
County Clerk of the Board of Public Education	John SS. Lee
County Clerk of the Board of Public Works	Robert TT. Clark
County Clerk of the Board of Public Health	Charles UU. Adams
County Clerk of the Board of Public Charities	Thomas VV. Miller
County Clerk of the Board of Public Agriculture	George WW. Davis
County Clerk of the Board of Public Commerce	John XX. Wilson
County Clerk of the Board of Public Labor	Frank YY. Hill
County Clerk of the Board of Public Social Welfare	Edgar ZZ. Scott
County Clerk of the Board of Public Safety	Harold AA. Green
County Clerk of the Board of Public Health	William BB. King
County Clerk of the Board of Public Education	John CC. Lee
County Clerk of the Board of Public Works	Robert DD. Clark
County Clerk of the Board of Public Health	Charles EE. Adams
County Clerk of the Board of Public Charities	Thomas FF. Miller
County Clerk of the Board of Public Agriculture	George GG. Davis
County Clerk of the Board of Public Commerce	John HH. Wilson
County Clerk of the Board of Public Labor	Frank II. Hill
County Clerk of the Board of Public Social Welfare	Edgar JJ. Scott
County Clerk of the Board of Public Safety	Harold KK. Green
County Clerk of the Board of Public Health	William LL. King
County Clerk of the Board of Public Education	John MM. Lee
County Clerk of the Board of Public Works	Robert NN. Clark
County Clerk of the Board of Public Health	Charles OO. Adams
County Clerk of the Board of Public Charities	Thomas PP. Miller
County Clerk of the Board of Public Agriculture	George QQ. Davis
County Clerk of the Board of Public Commerce	John RR. Wilson
County Clerk of the Board of Public Labor	Frank SS. Hill
County Clerk of the Board of Public Social Welfare	Edgar TT. Scott
County Clerk of the Board of Public Safety	Harold UU. Green
County Clerk of the Board of Public Health	William VV. King
County Clerk of the Board of Public Education	John WW. Lee
County Clerk of the Board of Public Works	Robert XX. Clark
County Clerk of the Board of Public Health	Charles YY. Adams
County Clerk of the Board of Public Charities	Thomas ZZ. Miller
County Clerk of the Board of Public Agriculture	George AA. Davis
County Clerk of the Board of Public Commerce	John BB. Wilson
County Clerk of the Board of Public Labor	Frank CC. Hill
County Clerk of the Board of Public Social Welfare	Edgar DD. Scott
County Clerk of the Board of Public Safety	Harold EE. Green
County Clerk of the Board of Public Health	William FF. King
County Clerk of the Board of Public Education	John GG. Lee
County Clerk of the Board of Public Works	Robert HH. Clark
County Clerk of the Board of Public Health	Charles II. Adams
County Clerk of the Board of Public Charities	Thomas JJ. Miller
County Clerk of the Board of Public Agriculture	George KK. Davis
County Clerk of the Board of Public Commerce	John LL. Wilson
County Clerk of the Board of Public Labor	Frank MM. Hill
County Clerk of the Board of Public Social Welfare	Edgar NN. Scott
County Clerk of the Board of Public Safety	Harold OO. Green
County Clerk of the Board of Public Health	William PP. King
County Clerk of the Board of Public Education	John QQ. Lee
County Clerk of the Board of Public Works	Robert RR. Clark
County Clerk of the Board of Public Health	Charles SS. Adams
County Clerk of the Board of Public Charities	Thomas TT. Miller
County Clerk of the Board of Public Agriculture	George UU. Davis
County Clerk of the Board of Public Commerce	John VV. Wilson
County Clerk of the Board of Public Labor	Frank WW. Hill
County Clerk of the Board of Public Social Welfare	Edgar XX. Scott
County Clerk of the Board of Public Safety	Harold YY. Green
County Clerk of the Board of Public Health	William ZZ. King
County Clerk of the Board of Public Education	John AA. Lee
County Clerk of the Board of Public Works	Robert BB. Clark
County Clerk of the Board of Public Health	Charles CC. Adams
County Clerk of the Board of Public Charities	Thomas DD. Miller
County Clerk of the Board of Public Agriculture	George EE. Davis
County Clerk of the Board of Public Commerce	John FF. Wilson
County Clerk of the Board of Public Labor	Frank GG. Hill
County Clerk of the Board of Public Social Welfare	Edgar HH. Scott
County Clerk of the Board of Public Safety	Harold II. Green
County Clerk of the Board of Public Health	William JJ. King
County Clerk of the Board of Public Education	John KK. Lee
County Clerk of the Board of Public Works	Robert LL. Clark
County Clerk of the Board of Public Health	Charles MM. Adams
County Clerk of the Board of Public Charities	Thomas NN. Miller
County Clerk of the Board of Public Agriculture	George OO. Davis
County Clerk of the Board of Public Commerce	John PP. Wilson
County Clerk of the Board of Public Labor	Frank QQ. Hill
County Clerk of the Board of Public Social Welfare	Edgar RR. Scott
County Clerk of the Board of Public Safety	Harold SS. Green
County Clerk of the Board of Public Health	William TT. King
County Clerk of the Board of Public Education	John UU. Lee
County Clerk of the Board of Public Works	Robert VV. Clark
County Clerk of the Board of Public Health	Charles WW. Adams
County Clerk of the Board of Public Charities	Thomas XX. Miller
County Clerk of the Board of Public Agriculture	George YY. Davis
County Clerk of the Board of Public Commerce	John ZZ. Wilson
County Clerk of the Board of Public Labor	Frank AA. Hill
County Clerk of the Board of Public Social Welfare	Edgar BB. Scott
County Clerk of the Board of Public Safety	Harold CC. Green
County Clerk of the Board of Public Health	William DD. King
County Clerk of the Board of Public Education	John EE. Lee
County Clerk of the Board of Public Works	Robert FF. Clark
County Clerk of the Board of Public Health	Charles GG. Adams
County Clerk of the Board of Public Charities	Thomas HH. Miller
County Clerk of the Board of Public Agriculture	George II. Davis
County Clerk of the Board of Public Commerce	John JJ. Wilson
County Clerk of the Board of Public Labor	Frank KK. Hill
County Clerk of the Board of Public Social Welfare	Edgar LL. Scott
County Clerk of the Board of Public Safety	Harold MM. Green
County Clerk of the Board of Public Health	William NN. King
County Clerk of the Board of Public Education	John OO. Lee
County Clerk of the Board of Public Works	Robert PP. Clark
County Clerk of the Board of Public Health	Charles QQ. Adams
County Clerk of the Board of Public Charities	Thomas RR. Miller
County Clerk of the Board of Public Agriculture	George SS. Davis
County Clerk of the Board of Public Commerce	John TT. Wilson
County Clerk of the Board of Public Labor	Frank UU. Hill
County Clerk of the Board of Public Social Welfare	Edgar VV. Scott
County Clerk of the Board of Public Safety	Harold WW. Green
County Clerk of the Board of Public Health	William XX. King
County Clerk of the Board of Public Education	John YY. Lee
County Clerk of the Board of Public Works	Robert ZZ. Clark
County Clerk of the Board of Public Health	Charles AA. Adams
County Clerk of the Board of Public Charities	Thomas BB. Miller
County Clerk of the Board of Public Agriculture	George CC. Davis
County Clerk of the Board of Public Commerce	John DD. Wilson
County Clerk of the Board of Public Labor	Frank EE. Hill
County Clerk of the Board of Public Social Welfare	Edgar FF. Scott
County Clerk of the Board of Public Safety	Harold GG. Green
County Clerk of the Board of Public Health	William HH. King
County Clerk of the Board of Public Education	John II. Lee
County Clerk of the Board of Public Works	Robert JJ. Clark
County Clerk of the Board of Public Health	Charles KK. Adams
County Clerk of the Board of Public Charities	Thomas LL. Miller
County Clerk of the Board of Public Agriculture	George MM. Davis
County Clerk of the Board of Public Commerce	John NN. Wilson
County Clerk of the Board of Public Labor	Frank OO. Hill
County Clerk of the Board of Public Social Welfare	Edgar PP. Scott
County Clerk of the Board of Public Safety	Harold QQ. Green
County Clerk of the Board of Public Health	William RR. King
County Clerk of the Board of Public Education	John SS. Lee
County Clerk of the Board of Public Works	Robert TT. Clark
County Clerk of the Board of Public Health	Charles UU. Adams
County Clerk of the Board of Public Charities	Thomas VV. Miller
County Clerk of the Board of Public Agriculture	George WW. Davis
County Clerk of the Board of Public Commerce	John XX. Wilson
County Clerk of the Board of Public Labor	Frank YY. Hill
County Clerk of the Board of Public Social Welfare	Edgar ZZ. Scott
County Clerk of the Board of Public Safety	Harold AA. Green
County Clerk of the Board of Public Health	William BB. King
County Clerk of the Board of Public Education	John CC. Lee
County Clerk of the Board of Public Works	Robert DD. Clark
County Clerk of the Board of Public Health	Charles EE. Adams
County Clerk of the Board of Public Charities	Thomas FF. Miller
County Clerk of the Board of Public Agriculture	George GG. Davis
County Clerk of the Board of Public Commerce	John HH. Wilson
County Clerk of the Board of Public Labor	Frank II. Hill
County Clerk of the Board of Public Social Welfare	Edgar JJ. Scott
County Clerk of the Board of Public Safety	Harold KK. Green
County Clerk of the Board of Public Health	William LL. King
County Clerk of the Board of Public Education	John MM. Lee
County Clerk of the Board of Public Works	Robert NN. Clark
County Clerk of the Board of Public Health	Charles OO. Adams
County Clerk of the Board of Public Charities	Thomas PP. Miller
County Clerk of the Board of Public Agriculture	George QQ. Davis
County Clerk of the Board of Public Commerce	John RR. Wilson
County Clerk of the Board of Public Labor	Frank SS. Hill
County Clerk of the Board of Public Social Welfare	Edgar TT. Scott
County Clerk of the Board of Public Safety	Harold UU. Green
County Clerk of the Board of Public Health	William VV. King
County Clerk of the Board of Public Education	John WW. Lee
County Clerk of the Board of Public Works	Robert XX. Clark
County Clerk of the Board of Public Health	Charles YY. Adams
County Clerk of the Board of Public Charities	Thomas ZZ. Miller
County Clerk of the Board of Public Agriculture	George AA. Davis
County Clerk of the Board of Public Commerce	John BB. Wilson
County Clerk of the Board of Public Labor	Frank CC. Hill
County Clerk of the Board of Public Social Welfare	Edgar DD. Scott
County Clerk of the Board of Public Safety	Harold EE. Green
County Clerk of the Board of Public Health	William FF. King
County Clerk of the Board of Public Education	John GG. Lee
County Clerk of the Board of Public Works	Robert HH. Clark
County Clerk of the Board of Public Health	Charles II. Adams
County Clerk of the Board of Public Charities	Thomas JJ. Miller
County Clerk of the Board of Public Agriculture	George KK. Davis
County Clerk of the Board of Public Commerce	John LL. Wilson
County Clerk of the Board of Public Labor	Frank MM. Hill
County Clerk of the Board of Public Social Welfare	Edgar NN. Scott
County Clerk of the Board of Public Safety	Harold OO. Green
County Clerk of the Board of Public Health	William PP. King
County Clerk of the Board of Public Education	John QQ. Lee
County Clerk of the Board of Public Works	Robert RR. Clark
County Clerk of the Board of Public Health	Charles SS. Adams
County Clerk of the Board of Public Charities	Thomas TT. Miller
County Clerk of the Board of Public Agriculture	George UU. Davis
County Clerk of the Board of Public Commerce	John VV. Wilson
County Clerk of the Board of Public Labor	Frank WW. Hill
County Clerk of the Board of Public Social Welfare	Edgar XX. Scott
County Clerk of the Board of Public Safety	Harold YY. Green
County Clerk of the Board of Public Health	William ZZ. King
County Clerk of the Board of Public Education	John AA. Lee
County Clerk of the Board of Public Works	Robert BB. Clark
County Clerk of the Board of Public Health	Charles CC. Adams
County Clerk of the Board of Public Charities	Thomas DD. Miller
County Clerk of the Board of Public Agriculture	George EE. Davis
County Clerk of the Board of Public Commerce	John FF. Wilson
County Clerk of the Board of Public Labor	Frank GG. Hill
County Clerk of the Board of Public Social Welfare	Edgar HH. Scott
County Clerk of the Board of Public Safety	Harold II. Green
County Clerk of the Board of Public Health	William JJ. King
County Clerk of the Board of Public Education	John KK. Lee
County Clerk of the Board of Public Works	Robert LL. Clark
County Clerk of the Board of Public Health	Charles MM. Adams
County Clerk of the Board of Public Charities	Thomas NN. Miller
County Clerk of the Board of Public Agriculture	George OO. Davis
County Clerk of the Board of Public Commerce	John PP. Wilson
County Clerk of the Board of Public Labor	Frank QQ. Hill
County Clerk of the Board of Public Social Welfare	Edgar RR. Scott
County Clerk of the Board of Public Safety	Harold SS. Green
County Clerk of the Board of Public Health	William TT. King
County Clerk of the Board of Public Education	John UU. Lee
County Clerk of the Board of Public Works	Robert VV. Clark
County Clerk of the Board of Public Health	Charles WW. Adams
County Clerk of the Board of Public Charities	Thomas XX. Miller
County Clerk of the Board of Public Agriculture	George YY. Davis
County Clerk of the Board of Public Commerce	John ZZ. Wilson
County Clerk of the Board of Public Labor	Frank AA. Hill
County Clerk of the Board of Public Social Welfare	Edgar BB. Scott
County Clerk of the Board of Public Safety	Harold CC. Green
County Clerk of the Board of Public Health	William DD. King
County Clerk of the Board of Public Education	John EE. Lee
County Clerk of the Board of Public Works	Robert FF. Clark
County Clerk of the Board of Public Health	Charles GG. Adams
County Clerk of the Board of Public Charities	Thomas HH. Miller
County Clerk of the Board of Public Agriculture	George II. Davis
County Clerk of the Board of Public Commerce	John JJ. Wilson
County Clerk of the Board of Public Labor	Frank KK. Hill
County Clerk of the Board of Public Social Welfare	Edgar LL. Scott
County Clerk of the Board of Public Safety	Harold MM. Green
County Clerk of the Board of Public Health	William NN. King
County Clerk of the Board of Public Education	John OO. Lee
County Clerk of the Board of Public Works	Robert PP. Clark
County Clerk of the Board of Public Health	Charles QQ. Adams
County Clerk of the Board of Public Charities	Thomas RR. Miller
County Clerk of the Board of Public Agriculture	George SS. Davis
County Clerk of the Board of Public Commerce	John TT. Wilson
County Clerk of the Board of Public Labor	Frank UU. Hill
County Clerk of the Board of Public Social Welfare	Edgar VV. Scott
County Clerk of the Board of Public Safety	Harold WW. Green
County Clerk of the Board of Public Health	William XX. King
County Clerk of the Board of Public Education	John YY. Lee
County Clerk of the Board of Public Works	Robert ZZ. Clark
County Clerk of the Board of Public Health	Charles AA.

Image 2/2



TONY MATELLI  
Yesterday, 2014



Painted bronze, steel, fiberglass, urethane, rub on transfers, mini keg, beer cans  
84 x 25 x 34 in  
(TM\_338)

ON KAWARA

Nov. 13, 1979, 1979



DEC.13,1980. "TODAY" Series No.38, 1980. Painted by  
On Kawara in New York City. Liquitex on canvas. 8"x10".

Liquitex on canvas

8 x 10 in. (20.5 x 25.5 cm.)

(OK\_029)

Image 1/2



George A. H. Murray

Marion Goodland, 52,  
Of Lathrop Sea-View

The first 30 minutes of coverage on the effects of the earthquake and the situation of the victims has been broadcasted, followed by 20 more minutes of news on the latest situation in the affected areas.

and from a number of the particular individuals in the World Council of Churches and from 1988 to 1991 a religious, interfaith group for women, the St. Elizabeth's in the Soviet Union Women's Association in Tbilisi.

© 1995 The McGraw-Hill Companies, Inc. All rights reserved. This publication is a registered trademark of The McGraw-Hill Companies, Inc. Printed in the United States of America. All other trademarks are the property of their respective owners.

As a student at Adelphi College in Suffolk University, Boston from 1975 to 1977 and at MIT, he was a student leader at Massachusetts College of Computer Science in Concord, Mass. and a member of the graduate school of engineering, that has a reputation for research in computer hardware, in MIT's old MIT Radio Institute, was a member of the faculty of the College of Engineering, Cambridge, Mass. and was a member.

[illegible][illegible][illegible]

In 1960, Dr. White received National Fellowship as recipient of OERI Research, and the next year he received provision of research appointments.

A. S. Finkel, M.D., *Psychiatrist  
and Medical Director, Inpatient*

2. Twelve Students' remarks at a meeting where a professor announced that the university was the Village of Montpelier and Montpelier, VT, was the name of a town which Tuesday in December was to be 24 hours old. He said 4 years would be 24 hours.

Dr. Prange was interviewed by the newly formed Council of Veterans' Groups (CVG) and he agreed, with a few changes, to be the author of a book to be published by the National Black Leadership Initiative Project. A book writing team would serve as his assistant. The writing team would have to be chosen

to use the information to be used in developing strategy. The only way to develop the strategy is to have a range of the staff who are interested and not just the top management. The only way to get the staff to be interested is to have a range of the staff who are interested in the strategy.

[illegible]

The two authors also emphasize a 20% to 25% reduction in peak air-pollution emissions is the minimum needed to give us a reasonable chance for significant improvement in the long-term environment. Current U.S. energy policy is inadequate.

10. While we have in Southampton and several towns in Hampshire a numerous body of 100 to 200 persons in general, these persons are the same as the Jews.

It is correlated for all years, the average (and *n*) of years, where it appears in the list, that were 1980 and 1981, and 1982, and 1983, and 1984, and 1985.

© 2000 by John Wiley & Sons, Inc.

Andrea Fossard, a playwright, had sleep on Broadway. Now.

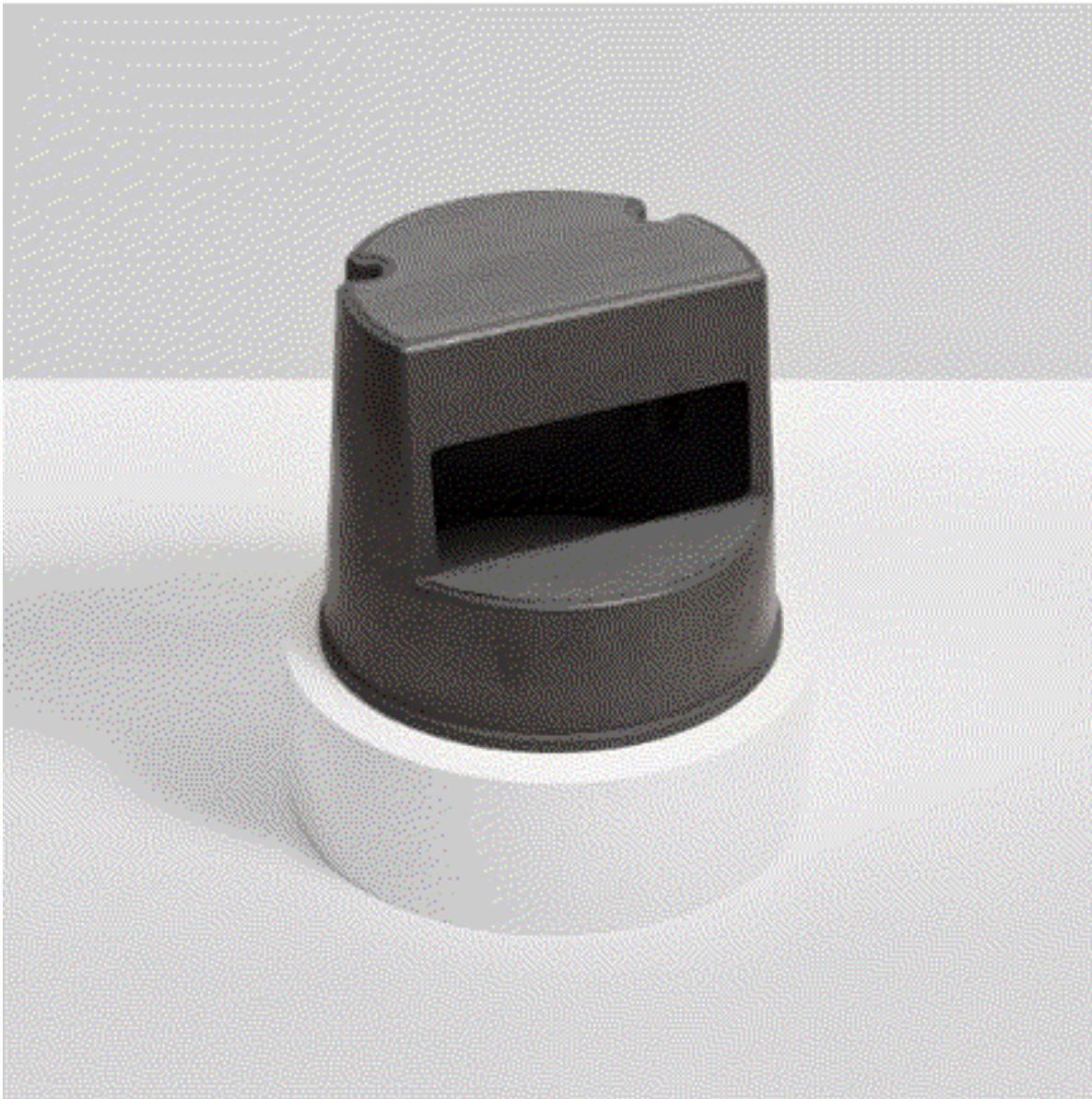
Robert B. Johnson, a playwright, whose playwriting is considered to have made him famous, died in 1971, and his family is his friend, as mentioned, he was the

Mr. Macmillan's last speech in New York was a masterly version of "Up to the Mountains," drawing Dan Rosten and Louis Waldman, added just a short time at the Maryland Mountain Shrine at Mt. Airy, N.C.

[illegible]

**RENTS**  
 1000-1500-2000-2500-3000-3500-4000-4500-5000-5500-6000-6500-7000-7500-8000-8500-9000-9500-10000-10500-11000-11500-12000-12500-13000-13500-14000-14500-15000-15500-16000-16500-17000-17500-18000-18500-19000-19500-20000-20500-21000-21500-22000-22500-23000-23500-24000-24500-25000-25500-26000-26500-27000-27500-28000-28500-29000-29500-30000-30500-31000-31500-32000-32500-33000-33500-34000-34500-35000-35500-36000-36500-37000-37500-38000-38500-39000-39500-40000-40500-41000-41500-42000-42500-43000-43500-44000-44500-45000-45500-46000-46500-47000-47500-48000-48500-49000-49500-50000-50500-51000-51500-52000-52500-53000-53500-54000-54500-55000-55500-56000-56500-57000-57500-58000-58500-59000-59500-60000-60500-61000-61500-62000-62500-63000-63500-64000-64500-65000-65500-66000-66500-67000-67500-68000-68500-69000-69500-70000-70500-71000-71500-72000-72500-73000-73500-74000-74500-75000-75500-76000-76500-77000-77500-78000-78500-79000-79500-80000-80500-81000-81500-82000-82500-83000-83500-84000-84500-85000-85500-86000-86500-87000-87500-88000-88500-89000-89500-90000-90500-91000-91500-92000-92500-93000-93500-94000-94500-95000-95500-96000-96500-97000-97500-98000-98500-99000-99500-100000-100500-101000-101500-102000-102500-103000-103500-104000-104500-105000-105500-106000-106500-107000-107500-108000-108500-109000-109500-110000-110500-111000-111500-112000-112500-113000-113500-114000-114500-115000-115500-116000-116500-117000-117500-118000-118500-119000-119500-120000-120500-121000-121500-122000-122500-123000-123500-124000-124500-125000-125500-126000-126500-127000-127500-128000-128500-129000-129500-130000-130500-131000-131500-132000-132500-133000-133500-134000-134500-135000-135500-136000-136500-137000-137500-138000-138500-139000-139500-140000-140500-141000-141500-142000-142500-143000-143500-144000-144500-145000-145500-146000-146500-147000-147500-148000-148500-149000-149500-150000-150500-151000-151500-152000-152500-153000-153500-154000-154500-155000-155500-156000-156500-157000-157500-158000-158500-159000-159500-160000-160500-161000-161500-162000-162500-163000-163500-164000-164500-165000-165500-166000-166500-167000-167500-168000-168500-169000-169500-170000-170500-171000-171500-172000-172500-173000-173500-174000-174500-175000-175500-176000-176500-177000-177500-178000-178500-179000-179500-180000-180500-181000-181500-182000-182500-183000-183500-184000-184500-185000-185500-186000-186500-187000-187500-188000-188500-189000-189500-190000-190500-191000-191500-192000-192500-193000-193500-194000-194500-195000-195500-196000-196500-197000-197500-198000-198500-199000-199500-200000-200500-201000-201500-202000-202500-203000-203500-204000-204500-205000-205500-206000-206500-207000-207500-208000-208500-209000-209500-210000-210500-211000-211500-212000-212500-213000-213500-214000-214500-215000-215500-216000-216500-217000-217500-218000-218500-219000-219500-220000-220500-221000-221500-222000-222500-223000-223500-224000-224500-225000-225500-226000-226500-227000-227500-228000-228500-229000-229500-230000-230500-231000-231500-232000-232500-233000-233500-234000-234500-235000-235500-236000-236500-237000-237500-238000-238500-239000-239500-240000-240500-241000-241500-242000-242500-243000-243500-244000-244500-245000-245500-246000-246500-247000-247500-248000-248500-249000-249500-250000-250500-251000-251500-252000-252500-253000-253500-254000-254500-255000-255500-256000-256500-257000-257500-258000-258500-259000-259500-260000-260500-261000-261500-262000-262500-263000-263500-264000-264500-265000-265500-266000-266500-267000-267500-268000-268500-269000-269500-270000-270500-271000-271500-272000-272500-273000-273500-274000-274500-275000-275500-276000-276500-277000-277500-278000-278500-279000-279500-280000-280500-281000-281500-282000-282500-283000-283500-284000-284500-285000-285500-286000-286500-287000-287500-288000-288500-289000-289500-290000-290500-291000-291500-292000-292500-293000-293500-294000-294500-295000-295500-296000-296500-297000-297500-298000-298500-299000-299500-300000-300500-301000-301500-302000-302500-303000-303500-304000-304500-305000-305500-306000-306500-307000-307500

ADAM MCEWEN  
Rubbermaid Step Stool, 2010



graphite  
sculpture 15 5/8 x 15 5/8 x 13 1/8 in. (39.7 x 39.7 x 33.3 cm)  
base 6 x 18 x 18 in. (15.2 x 45.7 x 45.7 cm)  
overall 21 5/8 x 18 x 18 in. (54.9 x 45.7 x 45.7 cm)  
this work is artist's proof 2 from an edition of 3 plus 2 artist's proofs.  
(AMCEW\_004)



TONY MATELLI  
Dick, 2012



Enamel on mirror  
72 x 48 in (182.9 x 121.9 cm)  
(TM\_029)

SHERRIE LEVINE  
Light Bulb, 2000



Signed with Initials and numbered 4/12 from an edition of 12  
Stainless Steel signed with Initials and Numbered  
9 X 20 X 9 CM - 3 1/2 X 7 7/8 X 3 1/2 IN.

(SLEV\_024)

Image 1/2



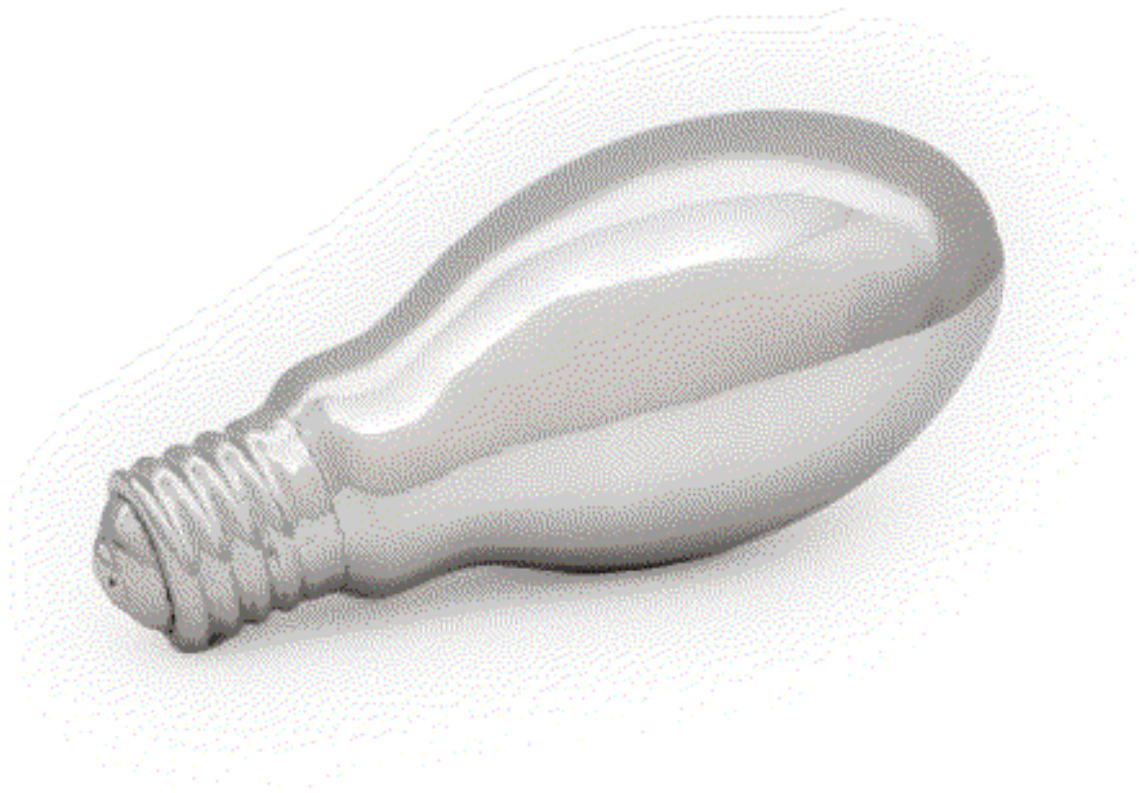


Image 2/2