

JENNA BURLINGHAM FINE ART LTD

WENDY PASMORE, 1913-2015

For full details and larger images, please see the end of this document.



Wendy Pasmore 1913-2015
Linear Motif (Oval), 1957
dated and inscribed "1957 cat no 8" verso
oil on canvas
19 7/8 x 23 7/8 in
50.5 x 60.5 cm
(WP009)

[View detail](#)



Wendy Pasmore 1913-2015
Oval Motif, Maroon, Ochre and Lilac, 1958
signed with initials; dated and inscribed "1958 Cat no 9" verso;
titled on remains of gallery label attached verso
oil on board
16 3/4 x 22 1/8 in
42.5 x 56 cm
(WP002)

[View detail](#)



Wendy Pasmore 1913-2015
Abstract in Browns, c 1960
signed on label attached verso
oil on board
21 1/4 x 13 in
54 x 33 cm
(WP008)

[View detail](#)



Wendy Pasmore 1913-2015
Triangular Motif, Lilac and Ochre, 1956
dated and inscribed "1956 Cat no 6" verso; titled on gallery
label attached verso
oil on board
18 1/2 x 13 3/4 in
47 x 35 cm
(WP006)

[View detail](#)



Wendy Pasmore 1913-2015
Untitled (Triangular Composition 2), c 1955
oil on board
20 1/8 x 15 1/8 in
51 x 38.5 cm
(WP014)

[View detail](#)



Wendy Pasmore 1913-2015
Abstract Brown and Indigo 2, 1961
dated and inscribed "1961/Cat no 14/abstract(?) in black + white in catalogue (wrong way up)" verso; titled on gallery label attached verso
oil on board
19 7/8 x 19 7/8 in
50.5 x 50.5 cm
(WP007)

[View detail](#)



Wendy Pasmore 1913-2015
Ovoid with Ochre, c 1963
oil on board
15 3/4 x 19 3/4 in
40 x 50 cm
(WP004)

[View detail](#)



Wendy Pasmore 1913-2015
Untitled (Blues and Browns), 1961
signed, dated and inscribed "1961/WENDY PASMORE/Cat no 13" verso
oil on board
12 3/4 x 17 3/4 in
32.5 x 45 cm
(WP012)

[View detail](#)



Wendy Pasmore 1913-2015
Blue Abstract / Now, 1964
signed with initials; titled verso
oil on canvas laid on board
24 3/8 x 23 7/8 in
62 x 60.5 cm
(WP017)

[View detail](#)



Wendy Pasmore 1913-2015
Water Shadows
oil on panel
15 3/4 x 15 3/4 in
40 x 40 cm
(WP026)

[View detail](#)



Wendy Pasmore 1913-2015
Abstract Blues, 1959-63
dated and inscribed "1959-1963 17" verso
oil on board
18 1/2 x 17 3/4 in
47 x 45 cm
(WP005)

[View detail](#)



Wendy Pasmore 1913-2015
Linear Motif (Brown and Lilac 2), 1963
dated and inscribed "1963 No 19" verso
oil on board
20 1/8 x 20 1/8 in
51 x 51 cm
(WP011)

[View detail](#)



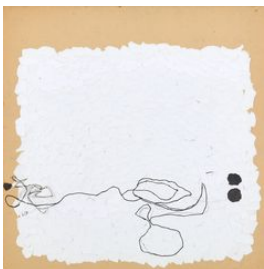
Wendy Pasmore 1913-2015
Transformations (Nine), 1970
signed, dated and titled verso
oil, ink, charcoal and pastel over paper collage on board
32 1/8 x 37 1/8 in
81.5 x 94 cm
(WP013)

[View detail](#)



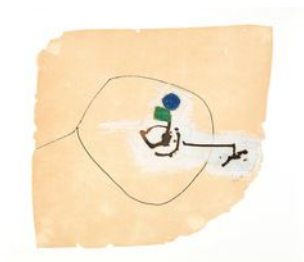
Wendy Pasmore 1913-2015
Untitled (Black Collage), c 1999
signed with initials
paper collage with pencil on board
24 x 24 in
61 x 61 cm
(WP021)

[View detail](#)



Wendy Pasmore 1913-2015
Untitled (Linear Over Collage), c 1996
signed with initials; further signed, titled and inscribed on
exhibition label verso
pen and ink with pencil over paper collage on board
24 x 24 in
61 x 61 cm
(WP020)

[View detail](#)



Wendy Pasmore 1913-2015
Untitled, 1990
ink and paint on paper
13 3/4 x 14 5/8 in
35 x 37 cm
(WP024)

[View detail](#)



Wendy Pasmore 1913-2015
Untitled (9), 1996
signed with initials
pen and ink over paper collage on board
28 x 28 in
71 x 71 cm
(WP019)

[View detail](#)



Wendy Pasmore 1913-2015
The Moon and I, c 1996
signed with initials
acrylic and pencil over paper collage on board
29 7/8 x 29 7/8 in
76 x 76 cm
(WP022)

[View detail](#)



Wendy Pasmore 1913-2015
Still life with Book, 1953
dated and inscribed "1953 Cat no 5" on frame; titled on gallery
label attached to the frame
oil on canvas
18 1/8 x 15 1/2 in
46 x 39.5 cm
(WP015)

[View detail](#)

WENDY PASMORE
Linear Motif (Oval), 1957



dated and inscribed "1957 cat no 8" verso
oil on canvas
19 7/8 x 23 7/8 in
50.5 x 60.5 cm
(WP009)

Image 1/2

Provenance
with Molton Gallery, London



Image 2/2

WENDY PASMORE

Oval Motif, Maroon, Ochre and Lilac, 1958



signed with initials; dated and inscribed "1958 Cat no 9" verso; titled on remains of gallery label attached verso

oil on board

16 3/4 x 22 1/8 in

42.5 x 56 cm

(WP002)

Image 1/2

Exhibitions

Molton Gallery, London



Image 2/2

WENDY PASMORE
Abstract in Browns, c 1960



signed on label attached verso
oil on board
21 1/4 x 13 in
54 x 33 cm
(WP008)

Image 1/2



Image 2/2

WENDY PASMORE
Triangular Motif, Lilac and Ochre, 1956



dated and inscribed "1956 Cat no 6" verso; titled on gallery label attached verso
oil on board
18 1/2 x 13 3/4 in
47 x 35 cm
(WP006)

Image 1/2

Provenance
with Molton Gallery, London



Image 2/2

WENDY PASMORE
Untitled (Triangular Composition 2), c 1955



oil on board
20 1/8 x 15 1/8 in
51 x 38.5 cm
(WP014)

Image 1/2



Image 2/2

WENDY PASMORE
Abstract Brown and Indigo 2, 1961



dated and inscribed "1961/Cat no 14/abstract(?)" in black + white in catalogue (wrong way up)" verso; titled on gallery label attached verso

oil on board

19 7/8 x 19 7/8 in

50.5 x 50.5 cm

(WP007)

Image 1/2

Provenance

with Molton Gallery, London

Exhibitions

London, Art Federation Galleries (renamed RBA Galleries), *London Group Exhibition*, March, 1962, cat. no.19;

London, Tate Gallery, *The London Group Jubilee Exhibition, Fifty Years of British Art 1914-1946*, 15 July - 16 August 1964, organised by the London Group, cat. no. 147, touring to:

National Museum of Wales Cardiff, 29 August - 26 September;

Museum and Art Gallery Doncaster 10 - 31 October

Literature

Claude Rogers and Andrew Forge, *The London Group Jubilee Exhibition, Fifty Years of British Art 1914-1946*, 15 July - 16 August 1964, London: The Tate Gallery, 1964



Image 2/2

WENDY PASMORE
Ovoid with Ochre, c 1963



oil on board
15 3/4 x 19 3/4 in
40 x 50 cm
(WP004)

Image 1/2

Provenance
The artist's estate



Image 2/2

WENDY PASMORE
Untitled (Blues and Browns), 1961



signed, dated and inscribed "1961/WENDY PASMORE/Cat no 13" verso
oil on board
12 3/4 x 17 3/4 in
32.5 x 45 cm
(WP012)

Image 1/2



Image 2/2

WENDY PASMORE
Blue Abstract / Now, 1964



signed with initials; titled verso
oil on canvas laid on board
24 3/8 x 23 7/8 in
62 x 60.5 cm
(WP017)

Image 1/2



Image 2/2

WENDY PASMORE
Water Shadows



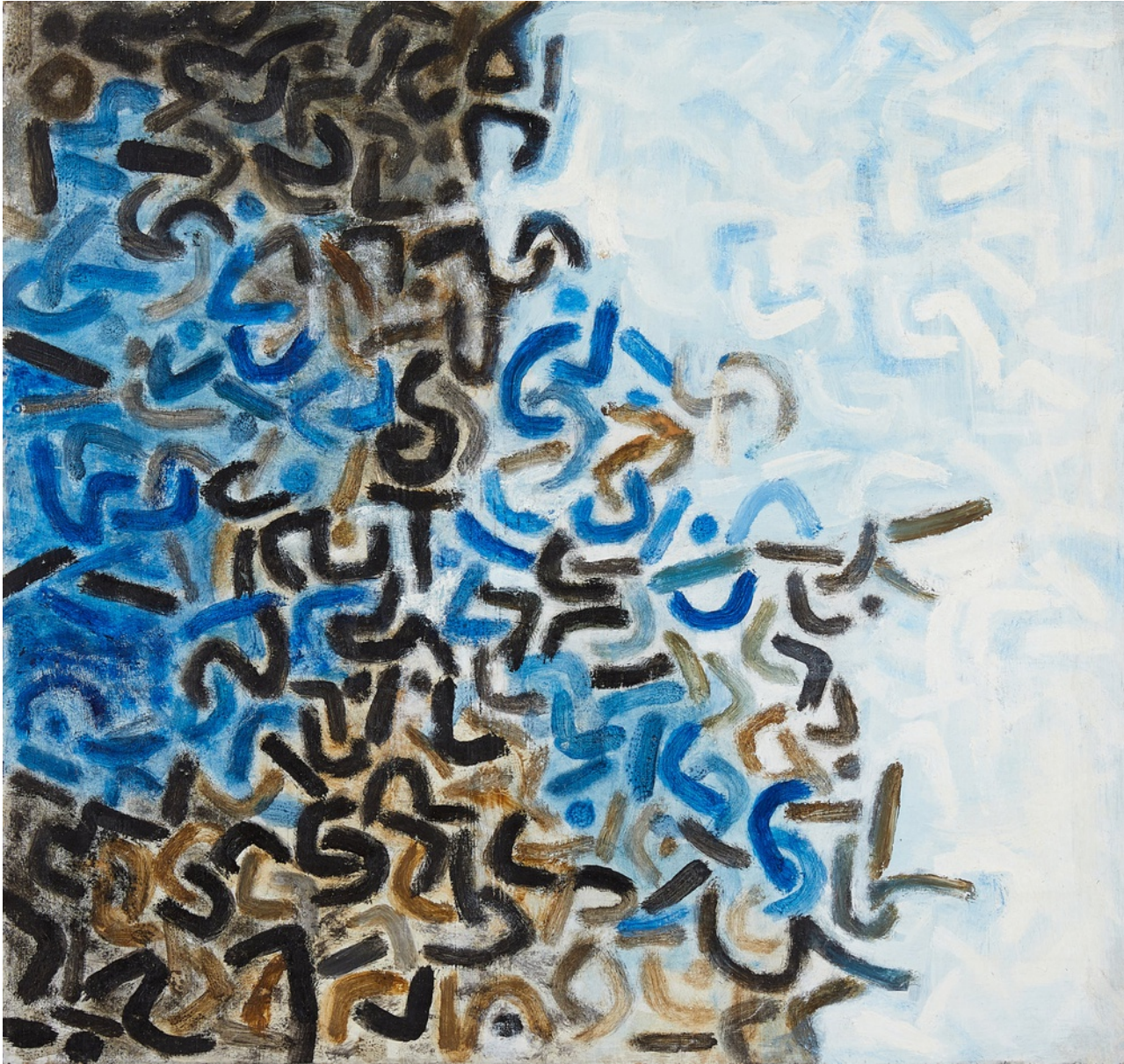
oil on panel
15 3/4 x 15 3/4 in
40 x 40 cm
(WP026)

Image 1/2



Image 2/2

WENDY PASMORE
Abstract Blues, 1959-63



dated and inscribed "1959-1963 17" verso
oil on board
18 1/2 x 17 3/4 in
47 x 45 cm
(WP005)

Image 1/2



Image 2/2

WENDY PASMORE

Linear Motif (Brown and Lilac 2), 1963



dated and inscribed "1963 No 19" verso

oil on board

20 1/8 x 20 1/8 in

51 x 51 cm

(WP011)

Image 1/2

Provenance

with Molton Gallery, London



Image 2/2

WENDY PASMORE
Transformations (Nine), 1970



signed, dated and titled verso
oil, ink, charcoal and pastel over paper collage on board
32 1/8 x 37 1/8 in
81.5 x 94 cm
(WP013)

Image 1/2



Image 2/2

WENDY PASMORE
Untitled (Black Collage), c 1999



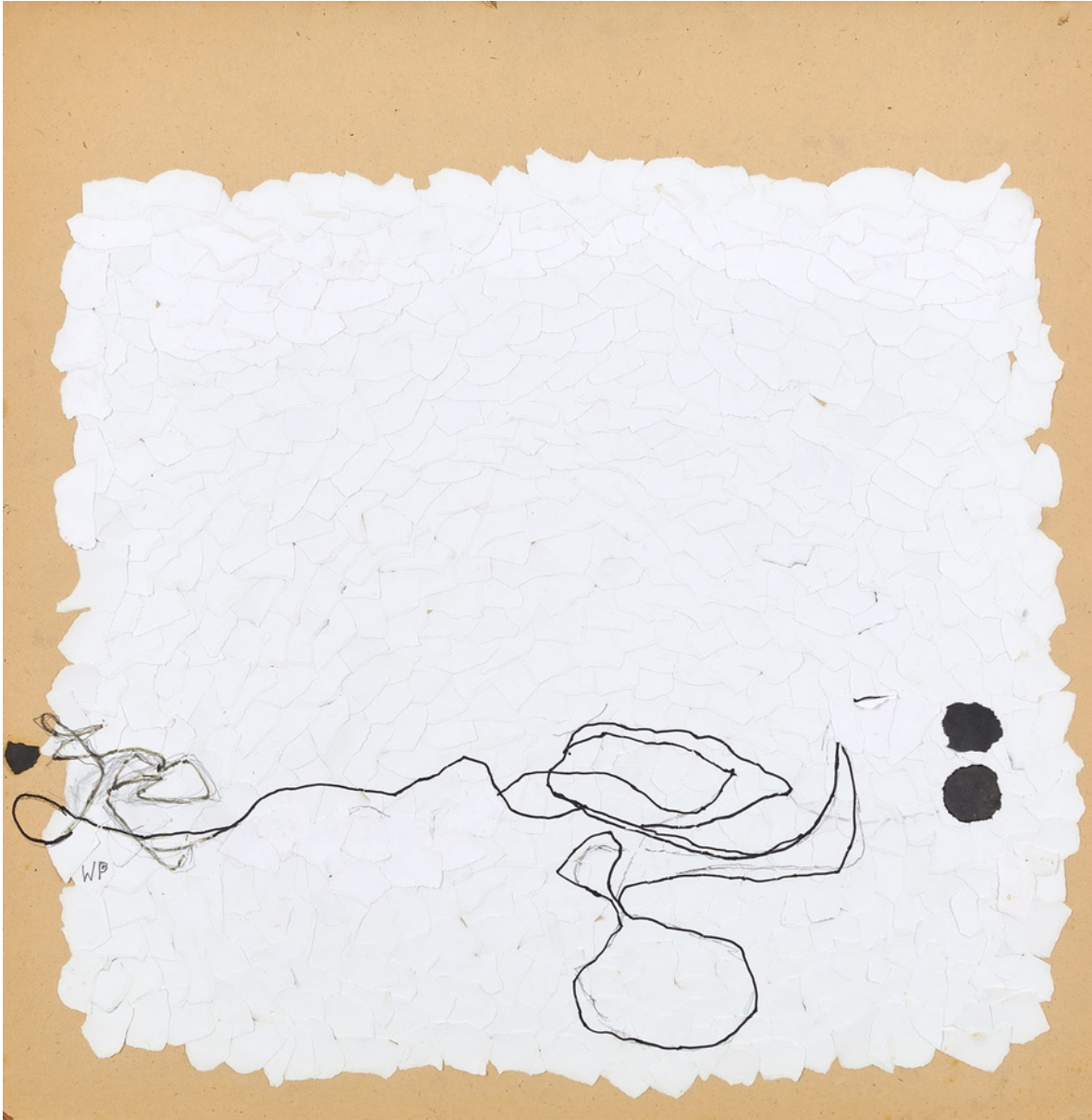
signed with initials
paper collage with pencil on board
24 x 24 in
61 x 61 cm
(WP021)

Image 1/2



Image 2/2

WENDY PASMORE
Untitled (Linear Over Collage), c 1996



signed with initials; further signed, titled and inscribed on exhibition label verso
pen and ink with pencil over paper collage on board
24 x 24 in
61 x 61 cm
(WP020)

Image 1/2

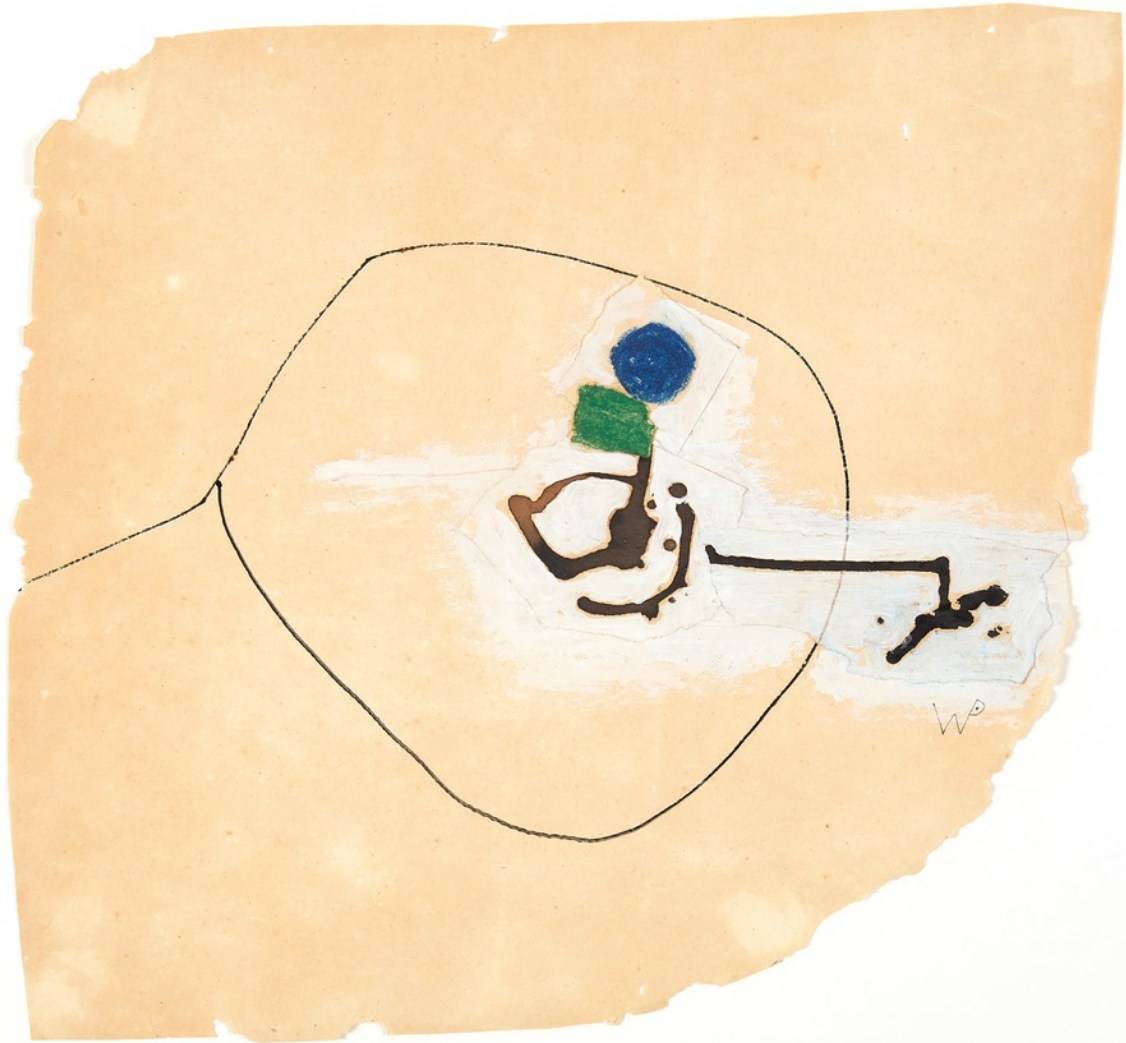
Exhibitions

London, Royal Academy, *Summer Exhibition*, 1996



Image 2/2

WENDY PASMORE
Untitled, 1990



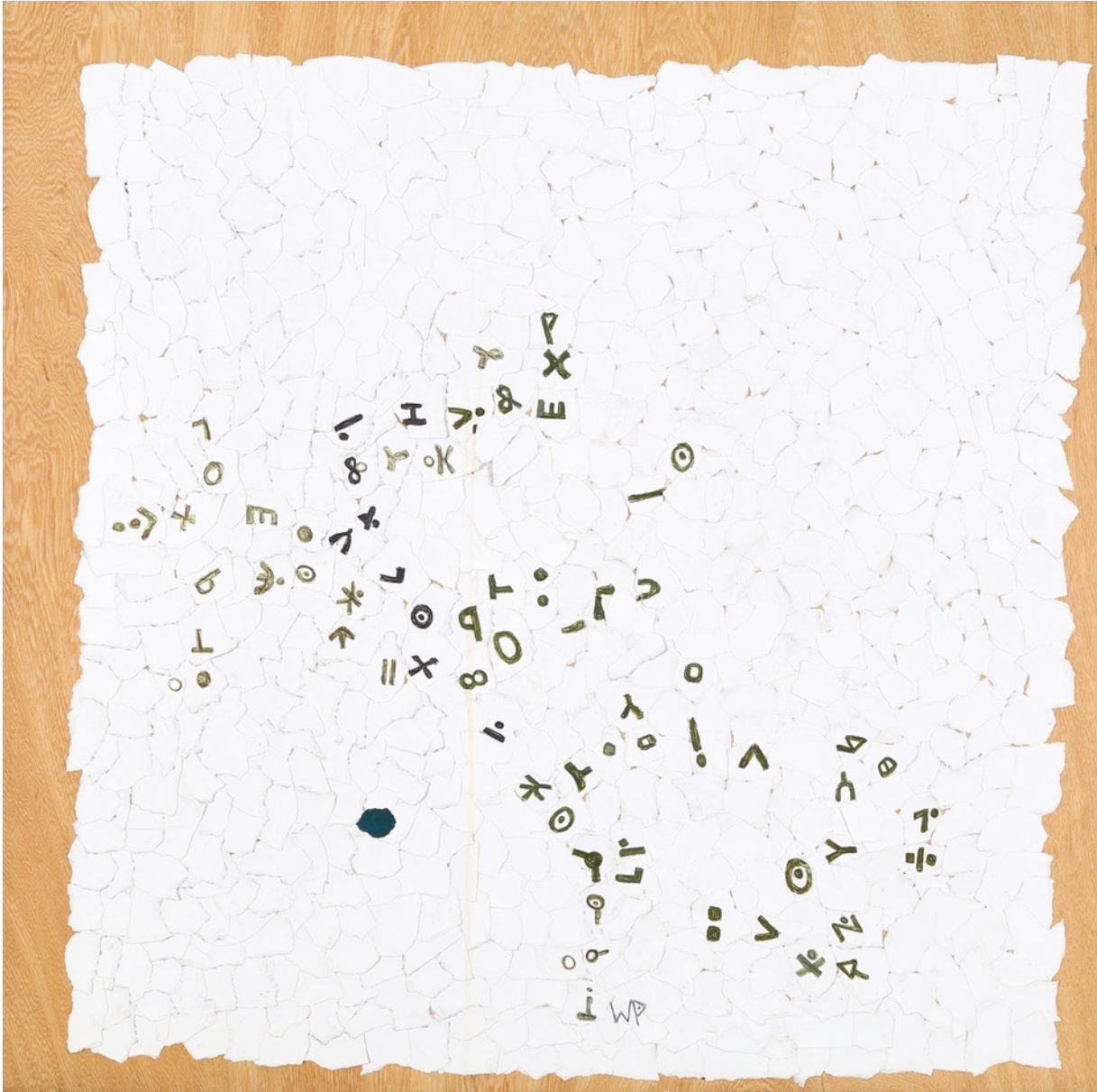
ink and paint on paper
13 3/4 x 14 5/8 in
35 x 37 cm
(WP024)

Image 1/2



Image 2/2

WENDY PASMORE
Untitled (9), 1996



signed with initials
pen and ink over paper collage on board
28 x 28 in
71 x 71 cm
(WP019)

Image 1/2



Image 2/2

WENDY PASMORE
The Moon and I, c 1996



signed with initials
acrylic and pencil over paper collage on board
29 7/8 x 29 7/8 in
76 x 76 cm
(WP022)

Image 1/2

Provenance
The artist's estate



Image 2/2

WENDY PASMORE
Still life with Book, 1953



dated and inscribed "1953 Cat no 5" on frame; titled on gallery label attached to the frame

oil on canvas

18 1/8 x 15 1/2 in

46 x 39.5 cm

(WP015)

Image 1/2

Provenance

with Molton Gallery, London



Image 2/2