

# GROSVENOR GALLERY

## FRANCIS NEWTON SOUZA&NBSP;CENTENARY EXHIBITION

Centre for Contemporary Arts, Bikaner House, New Delhi

10 - 22 January 2025

Whilst most of the exhibition is on loan, a small selection of works are for sale. Please contact us directly to discuss anything:  
[art@grosvenorgallery.com](mailto:art@grosvenorgallery.com)

For full details and larger images, please see the end of this document.



**Francis Newton Souza**

*Untitled (Landscape with Palm trees)* , 1959

Signed and dated 'Souza 59' lower right

Pen and ink on paper

33 x 20.3 cm

13 x 8 in

(20692)

[View detail](#)

INR 4 L + GST



**Francis Newton Souza**

*Untitled (Drawing of Flower with leaves)* , 1960

Signed and dated 'Souza 60' lower left

Pen and ink on paper

24.1 x 17.8 cm

9 1/2 x 7 in

(20691)

[View detail](#)

INR 3L + GST



**Francis Newton Souza**

*Untitled (Grey Landscape)*, 1960

Signed and dated 'Souza 60' lower left; with Grosvenor Gallery  
and SaffronArt labels on the reverse

Oil and graphite on paper

16.6 x 15.9 cm

6 1/2 x 6 1/4 in

(21307)

[View detail](#)

INR 25 L + GST



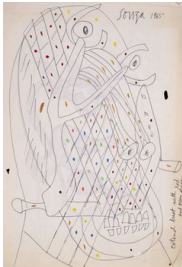
**Francis Newton Souza**

*Christ with Symbols of the Crucifixion*, 1963

Signed and dated, lower left, 'Souza 1963' and editioned  
61/100 lower right  
Etching on paper  
45 x 38 cm  
17 3/4 x 15 in  
(20866)

[View detail](#)

INR 2.2 L + GST



**Francis Newton Souza**

*Untitled (Kalam Head)*, 1965

Signed and dated 'Souza 1965' upper right, inscribed 'extend  
bust with red and green stripes' lower right  
Ink and marker on paper

[View detail](#)

36.5 x 24.3 cm  
14 3/8 x 9 5/8 in  
(972176)

INR 22 L + GST



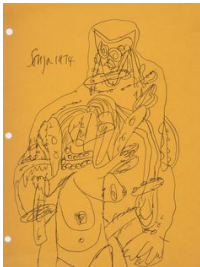
**Francis Newton Souza**

*Untitled (Two Abstract Heads)*, 1970

Signed and dated 'Souza 1970' upper left  
Pen and ink and chemical alteration on magazine paper  
27.9 x 41.3 cm  
11 x 16 1/4 in

[View detail](#)

INR 10 L + GST



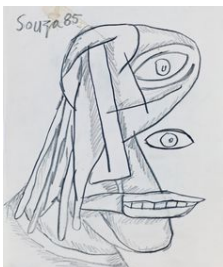
**Francis Newton Souza**

*Untitled (Abstract figure on yellow paper)*, 1974

Signed and dated 'Souza 1974' upper left  
Pen and ink on paper  
27.9 x 21.6 cm  
11 x 8 1/2 in  
(20682)

[View detail](#)

£ 4,000.00



**Francis Newton Souza**

*Untitled (Cubist Head)*, 1985

Signed and dated 'Souza 85' upper left  
Pencil on paper  
22 x 18.2 cm  
8 5/8 x 7 1/8 in

[View detail](#)

INR 4 + GST



**Francis Newton Souza**

*Untitled (Lovers)*, 1989

Signed and dated 'Souza 89' upper centre

Acrylic on canvas

71.1 x 106.7 cm

28 x 42 in

[View detail](#)

INR 1.5 Crore + GST



**Francis Newton Souza**

*Untitled (Man in Red Jacket)*, 1997

Signed and dated 'Souza 97' upper right

Ink and chemical alteration on magazine paper

27.9 x 22.9 cm

11 x 9 in

(20461)

[View detail](#)

INR 5 L + GST



**Francis Newton Souza**

*Untitled (Still Life by a Window)*, 1998

Signed and dated 'Souza 98' upper right; inscribed with estate inventory number verso

Chemical alteration and ink on printed magazine paper

27.3 x 23.2 cm

10 3/4 x 9 1/8 in

[View detail](#)

INR 6 L + GST

FRANCIS NEWTON SOUZA

*Untitled (Landscape with Palm trees)* , 1959



Signed and dated 'Souza 59' lower right

Pen and ink on paper

33 x 20.3 cm

13 x 8 in

(20692)

INR 4 L + GST

**Provenance**

Estate of the Artist (ref no Cr-IP-59-003)

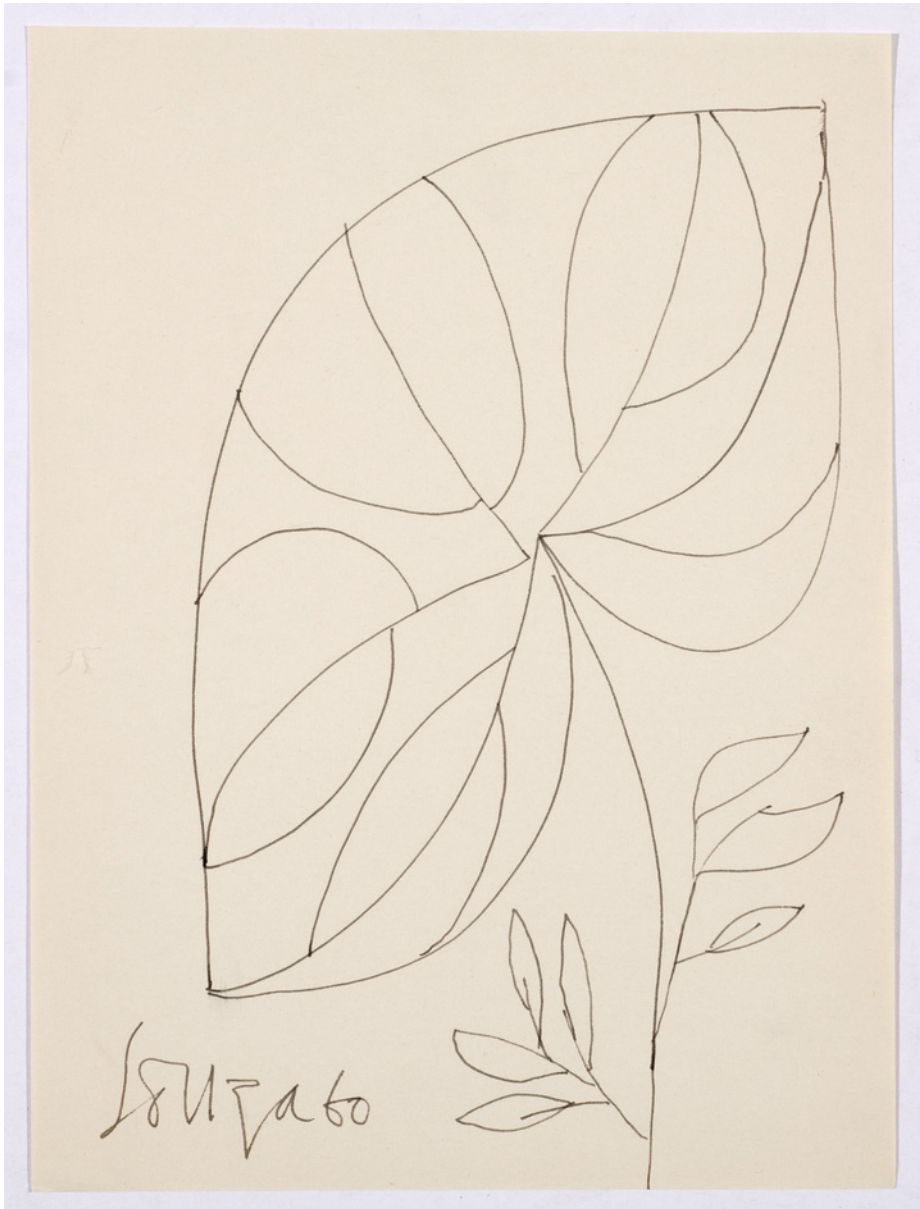
Barbra Zinkant, USA;

Grosvenor Gallery, London



FRANCIS NEWTON SOUZA

*Untitled (Drawing of Flower with leaves)* , 1960



Signed and dated 'Souza 60' lower left

Pen and ink on paper

24.1 x 17.8 cm

9 1/2 x 7 in

(20691)

INR 3L + GST

**Provenance**

Estate of the Artist (ref no CR-IP-60-006)

Barbra Zinkant, USA;

Grosvenor Gallery, London





FRANCIS NEWTON SOUZA  
*Untitled (Grey Landscape)*, 1960



Signed and dated 'Souza 60' lower left; with Grosvenor Gallery and SaffronArt labels on the reverse

Oil and graphite on paper

16.6 x 15.9 cm

6 1/2 x 6 1/4 in

(21307)

INR 25 L + GST

Image 1/2

### Description



'Souza is a painter of cityscapes and religious themes. While in the latter he is loaded with a troubled presentiment, in the former he is singularly devoid of emotive inhibitions. Unlike the cityscapes of Ram Kumar which ooze a silent melancholy and flare warmly from amidst the gloomy shadows of all-consuming time, Souza's cityscapes are the congealed visions of a mysterious world. Whether standing stolidly in enamelled petrification or delineated in thin colours with calligraphic intonations, the cityscapes of Souza are purely plastic entities with no reference to memories or mirrors.' J. Swaminathan, (21.10.62), Souza's Exhibition. Rpt in LKC 40 (Mar 1995)

Francis Newton Souza, a trailblazing artist of the 20th century, left an indelible mark on the world of modern Indian art. His distinctive style, marked by bold colours, striking compositions, and a fearless exploration of the human form, made him one of India's most celebrated and controversial artists. Born on April 12, 1924, in Saligao, Goa, Souza's life journey was a tumultuous one, marked by artistic triumphs and personal tribulations.

#### Early Life and Education

Souza was born into a Roman Catholic family in Portuguese-occupied Goa. His early years were fraught with challenges, including poverty and the loss of his father at a young age. Despite these hardships, Souza displayed a remarkable talent for drawing, catching the attention of his teachers and local artists. Encouraged by their support, he pursued formal art education at the Sir J.J. School of Art in Mumbai, where he honed his skills and developed a strong foundation in classical European art techniques.

#### The Progressive Artists' Group

After completing his formal education, Souza moved to London in 1949, where he was exposed to the avant-garde art scene. He soon became a prominent member of the "Progressive Artists' Group," a collective of artists who aimed to break free from the confines of traditional Indian art and embrace contemporary, international influences. Souza's work from this period is characterized by a blend of Western modernism and a distinct Indian sensibility.

#### Artistic Style and Themes

Souza's style was bold and unapologetic. He painted with a sense of urgency, often using thick impasto layers and vibrant colours to depict his subjects. His subjects ranged from portraits and landscapes to religious and erotic themes. Souza's fascination with the human form was a recurring motif in his work, which he often rendered in an abstract and distorted manner, exploring themes of desire, sexuality, and spirituality.

#### Controversy and Critique

Souza's provocative art often courted controversy, and his provocative themes led to both admiration and condemnation. His bold depictions of sexuality and religion sometimes raised eyebrows, even leading to legal troubles. Despite these challenges, Souza remained uncompromising in his artistic vision, and his work continued to garner attention on the international stage.

#### International Success

In the 1950s and 1960s, Souza's reputation as a groundbreaking artist grew beyond India's borders. He exhibited extensively in London, New York, and other major art capitals, earning critical acclaim and commercial success. His paintings were acquired by major museums and private collectors worldwide, solidifying his status as a leading figure in contemporary art.

#### Later Life and Legacy

Souza's later years were marked by personal struggles, including health issues and financial difficulties. He spent the last years of his life in New York, where he continued to paint prolifically until his passing on March 28, 2002. Souza's legacy endures through his pioneering contributions to modern Indian art, inspiring subsequent generations of artists to push boundaries and challenge conventions.

#### Provenance

Private British Collection;  
Grosvenor Gallery, London;  
Private British Collection;

#### Exhibitions

Saffronart, New York, *F.N Souza*, 16 September - 15 October 2008  
Grosvenor Gallery, London, *F.N Souza*, 4 - 16 December, 2008

*Grosvenor Gallery, London, South Asian Modern Art 2024*, 13 June – 5 July 2024, no. 19, illustrated in exhibition catalogue pg. 53



Image 2/2

FRANCIS NEWTON SOUZA

*Christ with Symbols of the Crucifixion, 1963*



Signed and dated, lower left, 'Souza 1963' and editioned 61/100 lower right

Etching on paper

45 x 38 cm

17 3/4 x 15 in

(20866)

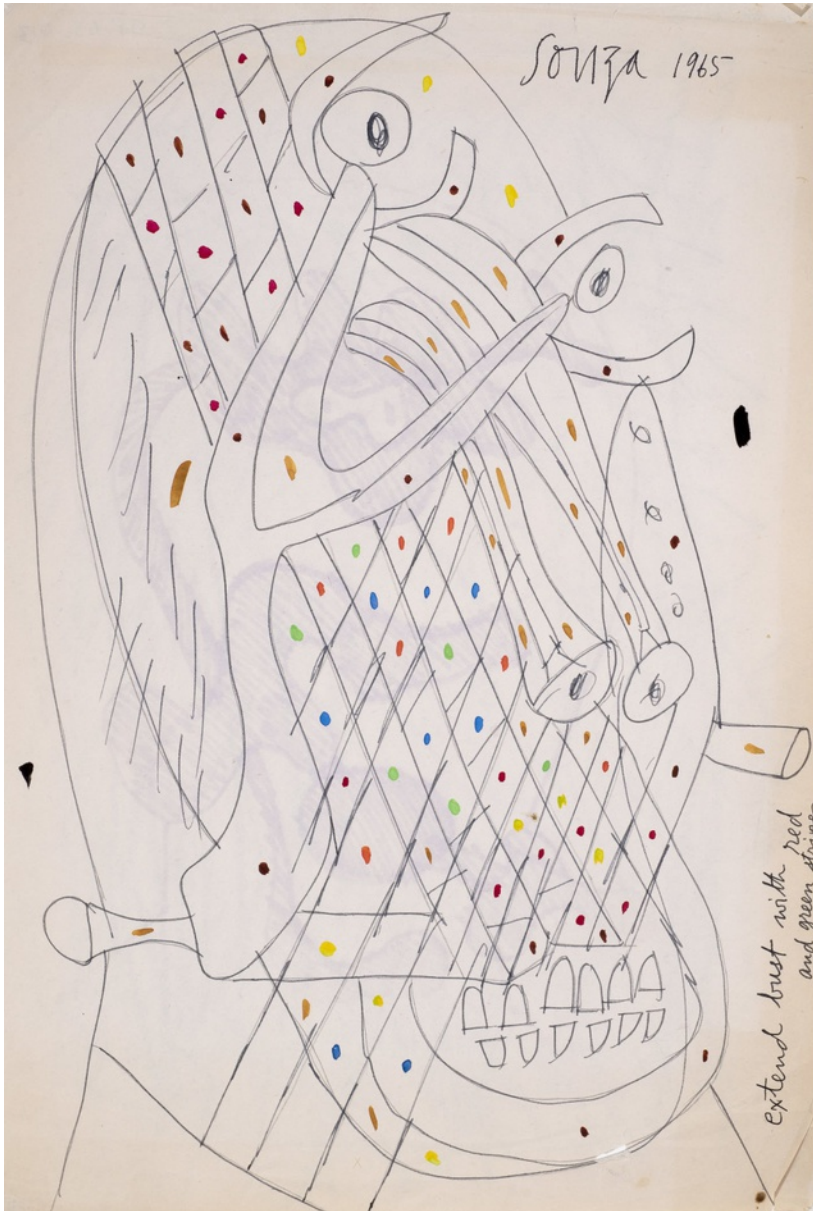
INR 2.2 L + GST

**Provenance**

Private British Collection



FRANCIS NEWTON SOUZA  
*Untitled (Kalam Head)*, 1965



Signed and dated 'Souza 1965' upper right, inscribed 'extend bust with red and green stripes' lower right  
Ink and marker on paper

36.5 x 24.3 cm  
14 3/8 x 9 5/8 in  
(972176)

INR 22 L + GST

**Provenance**

The Estate of the Artist;  
Grosvenor Gallery, London





FRANCIS NEWTON SOUZA  
*Untitled (Two Abstract Heads)*, 1970



Signed and dated 'Souza 1970' upper left  
Pen and ink and chemical alteration on magazine paper  
27.9 x 41.3 cm  
11 x 16 1/4 in

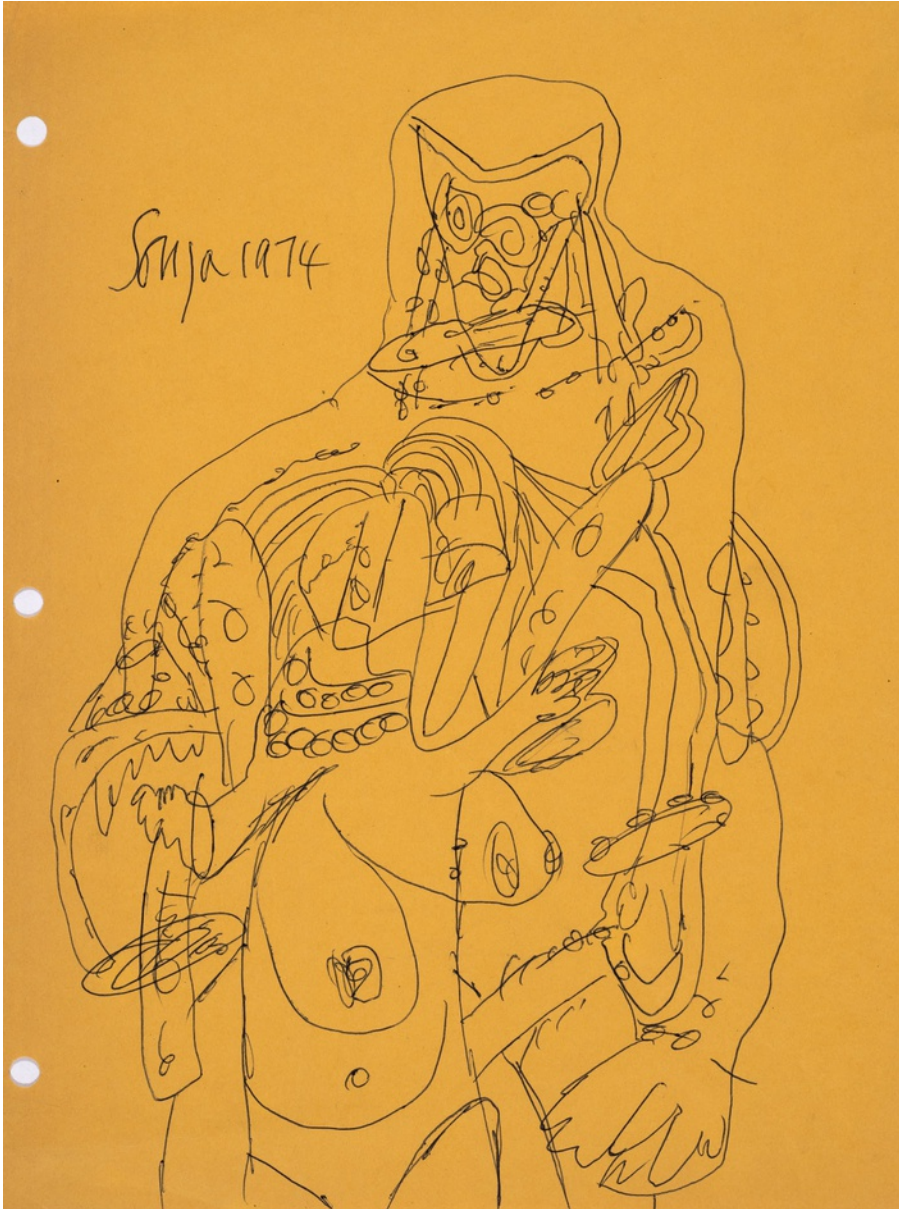
INR 10 L + GST

**Provenance**

Private US collection;  
*Metro Online*, March 2020, Weschlers, USA;  
Private British Collection

FRANCIS NEWTON SOUZA

*Untitled (Abstract figure on yellow paper)* , 1974



Signed and dated 'Souza 1974' upper left

Pen and ink on paper

27.9 x 21.6 cm

11 x 8 1/2 in

(20682)

£ 4,000.00

**Provenance**

Estate of the Artist (ref no Cr-PnP-74-001)

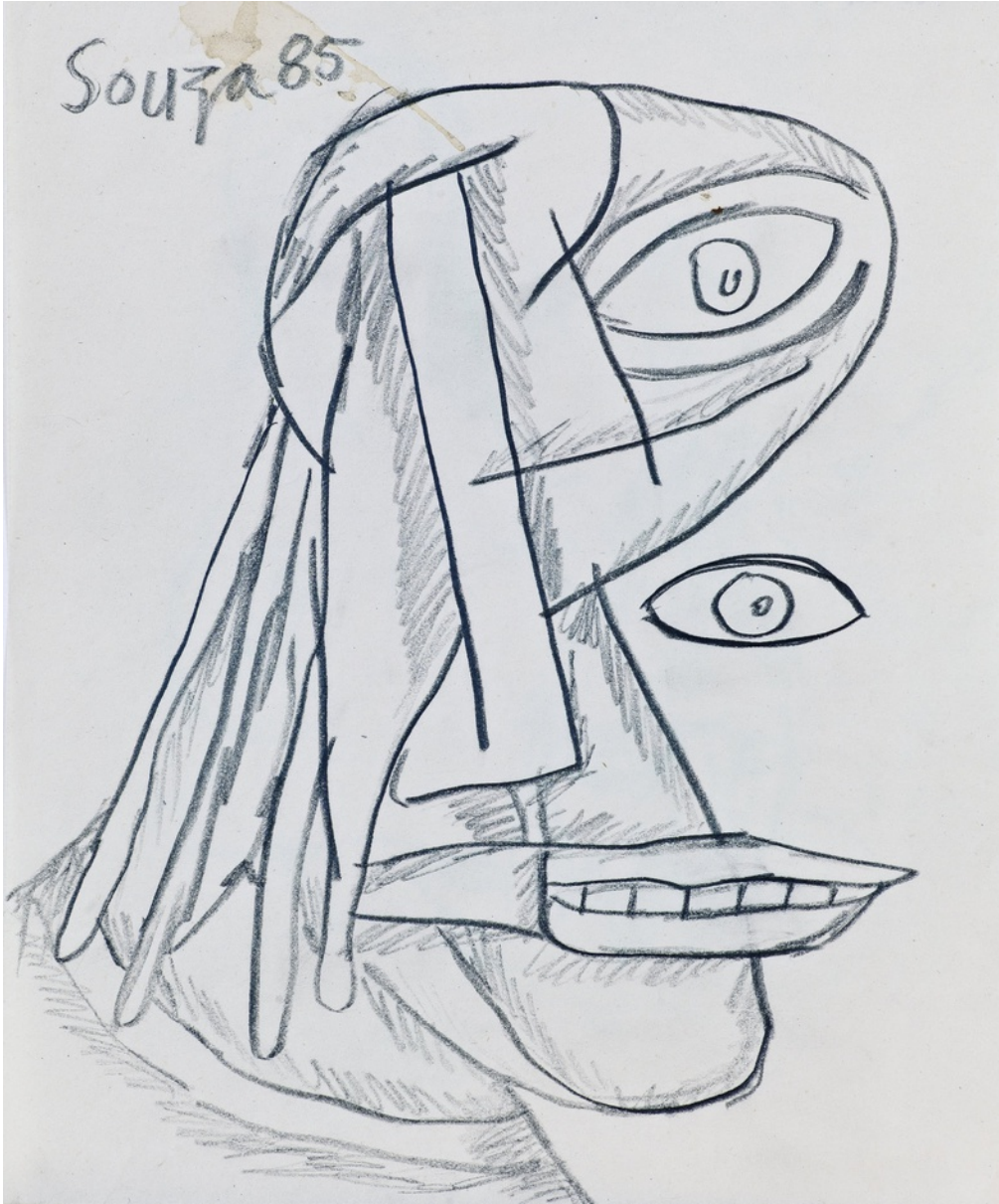
Barbra Zinkant, USA;

Grosvenor Gallery, London





FRANCIS NEWTON SOUZA  
*Untitled (Cubist Head)*, 1985



Signed and dated 'Souza 85' upper left

Pencil on paper

22 x 18.2 cm

8 5/8 x 7 1/8 in

INR 4 + GST

**Provenance**

The Estate of the Artist;  
Private British Collection

FRANCIS NEWTON SOUZA

*Untitled (Lovers)*, 1989



Signed and dated 'Souza 89' upper centre

Acrylic on canvas

71.1 x 106.7 cm

28 x 42 in

INR 1.5 Crore + GST

### Description

This painting comes from a close friend of the Artist's who was living in Mumbai in the 1980s. We exhibited a collection of sketches by Souza in Mumbai in November 2023 from the same collection. In this painting Souza depicts an Odalisque reclining against a richly textured backdrop. A male figure looks on from behind, reminiscent of the tale of Susannah and the Elders, a subject Souza visited earlier in his career. Except the nude, paint is applied thickly and quickly, giving the background an energetic and emotional feeling, contrary to the serene depiction of the reclining nude in the foreground.

For a further discussion of the theme of Odalisque in Souza's work see our exhibition catalogue 'South Asian Modern Art 2019', pgs. 58 & 59.

### Provenance

Private Indian collection;

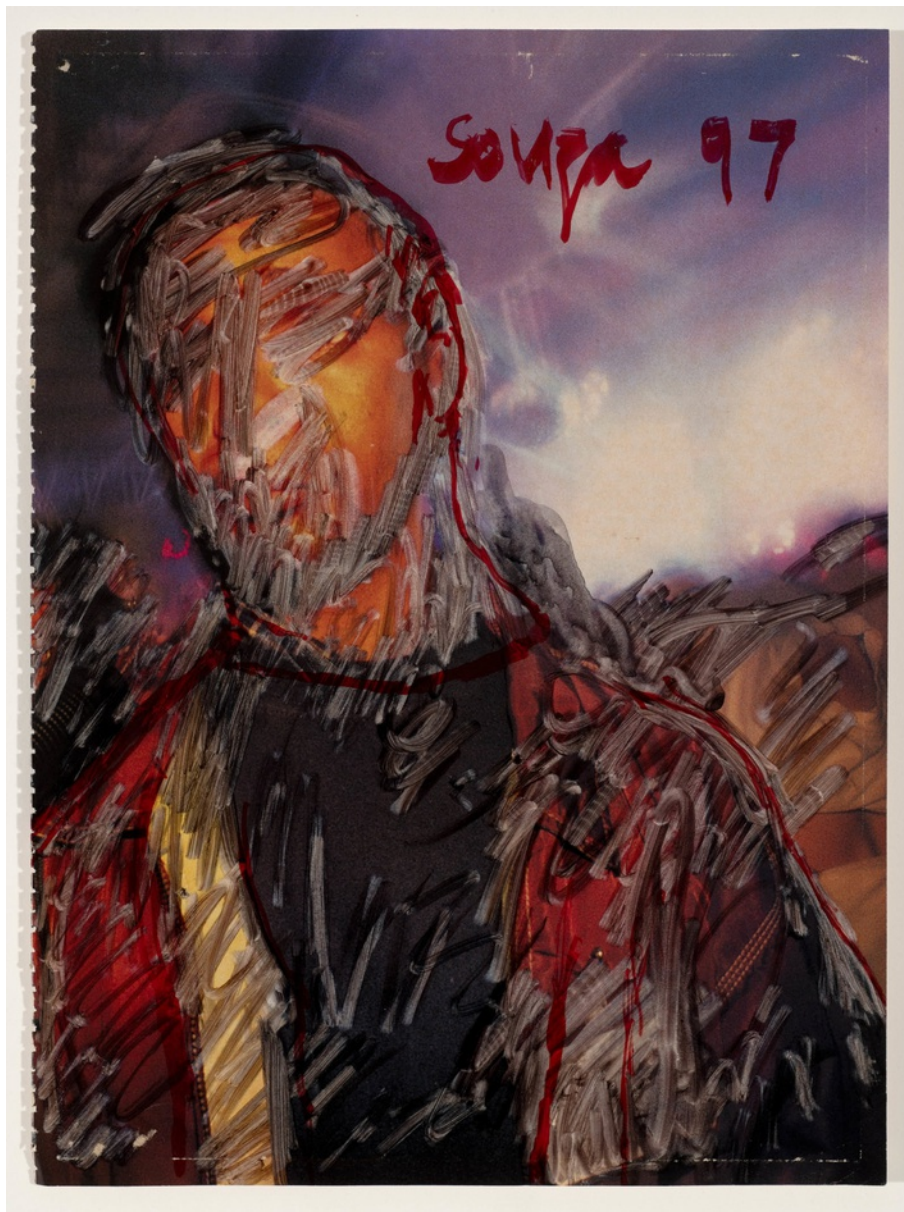
Grosvenor Gallery, London

### Exhibitions



*Grosvenor Gallery, London, South Asian Modern Art 2024, 13 June – 5 July 2024, no. 48, illustrated in exhibition catalogue pg. 122*

FRANCIS NEWTON SOUZA  
*Untitled (Man in Red Jacket)*, 1997



Signed and dated 'Souza 97' upper right  
Ink and chemical alteration on magazine paper

27.9 x 22.9 cm  
11 x 9 in  
(20461)

INR 5 L + GST

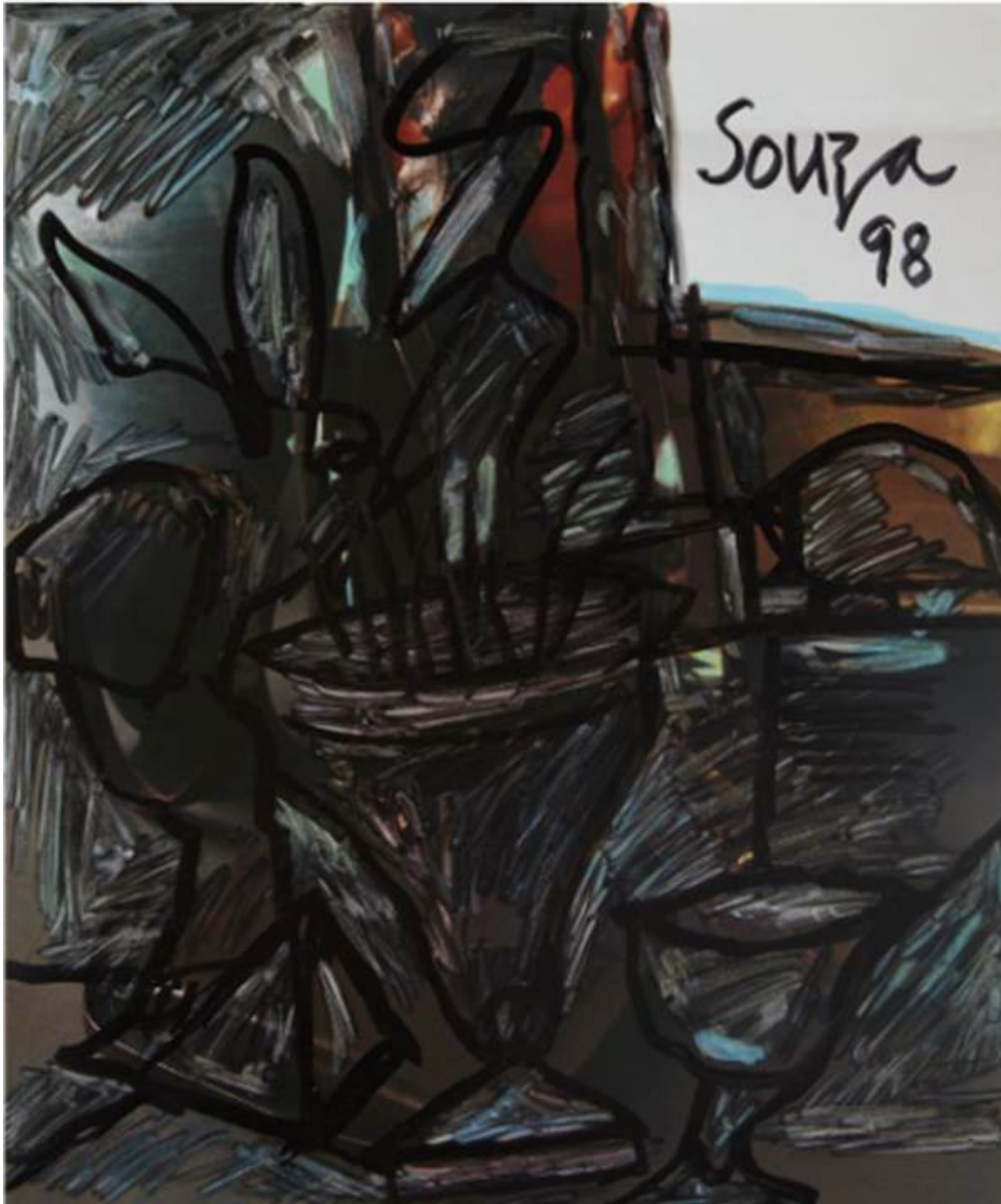
**Provenance**

The Estate of the Artist;  
Grosvenor Gallery, London



FRANCIS NEWTON SOUZA

*Untitled (Still Life by a Window)*, 1998



Signed and dated 'Souza 98' upper right; inscribed with estate inventory number verso

Chemical alteration and ink on printed magazine paper

27.3 x 23.2 cm

10 3/4 x 9 1/8 in

INR 6 L + GST

**Provenance**

Estate of The Artist (C-98-406);

Grosvenor Gallery, London