

GLASGOW PRINT STUDIO

LIMITED EDITIONS

Limited Editions offers buyers and collectors an opportunity to acquire last, low-run and unique prints from many of the studio's most celebrated artists:

For full details and larger images, please see the end of this document.



John Byrne
Smokey Joe, 2010
etching
56 x 51 cm
22 1/8 x 20 1/8 in
edition of 10
(02846)

[View detail](#)

£ 1,800.00



John Byrne
The American Boy, 1999
lithograph
78 x 90 cm
30 3/4 x 35 3/8 in
edition of 30 (#14/30)
(00669)

[View detail](#)

£ 4,000.00



John Byrne
Il Pensiero, 2012
etching with watercolour
55 x 50 cm
21 5/8 x 19 3/4 in
A/P
(06417)

[View detail](#)

£ 3,600.00



John Byrne
Jeanne d'Arc
mixed media on paper
80 x 60 cm
31 1/2 x 23 5/8 in

[View detail](#)

(11267)

£ 8,400.00



John Byrne
Untitled (Hat I), 2018
monotype with watercolour and drawing in ink and pencil
56 x 76 cm
22 1/8 x 29 7/8 in
U/P
(12476)

[View detail](#)

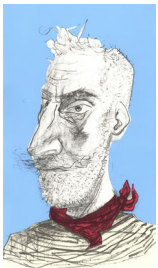
£ 6,000.00



John Byrne
Angelo Bruno
monotype
56 x 76 cms
22.06 x 29.94 inches
(#1/1)
(01659)

[View detail](#)

£ 5,000.00



John Byrne
Red 'Kerchief, 2020
screenprint
72 x 46 cm
28 3/8 x 18 1/8 in
edition of 30
(15126)

[View detail](#)

£ 1,500.00



John Byrne
Untitled (Self), 2020
screenprint
47 x 31 cm
18 1/2 x 12 1/4 in
edition of 10
(15129)

[View detail](#)

£ 1,200.00



Elizabeth Blackadder

Fred on Top of the Cupboard, 2003

etching

54 x 50 cm

21 1/4 x 19 3/4 in

edition of 80

(00859)

£ 2,400.00

[View detail](#)



Elizabeth Blackadder

Abyssinian Cat in a Basket, 1995

etching

51 x 52 cm

20 1/8 x 20 1/2 in

33/70

(04831)

£ 2,400.00

[View detail](#)



Elizabeth Blackadder

Amalia Sleeping, 2003

etching

54 x 50 cm

21 1/4 x 19 3/4 in

edition of 80

(00861)

£ 2,400.00

[View detail](#)



Elizabeth Blackadder

Fred in a Box, 2003

etching

54 x 50 cm

21 1/4 x 19 3/4 in

edition of 80

(01148)

£ 2,400.00

[View detail](#)



Elizabeth Blackadder

Orchidaceae Masdevallia Dracula Bella, 1993

etching

63.3 x 50.7 cm

24 7/8 x 20 in

edition of 40

(01699)

£ 2,400.00

[View detail](#)



Elizabeth Blackadder

Orchidaceae Odontoglossum Grande, 1993

etching

63.3 x 50.7 cm

24 7/8 x 20 in

edition of 40

(01808)

£ 2,400.00

[View detail](#)



Elizabeth Blackadder

Orchidaceae Paphiopedilum Sanderianum, 1993

etching and aquatint

63.3 x 50.7 cm

24 7/8 x 20 in

A/P

(04822)

£ 2,400.00

[View detail](#)



Elizabeth Blackadder

Orchidaceae Coelogyne Cristata, 1999

aquatint and carborundum

44 x 55 cm

17 3/8 x 21 5/8 in

edition of 40

(01811)

£ 2,400.00

[View detail](#)



Elizabeth Blackadder

Paphiopedilum Insigne Maudiae Coloratum, 1987

etching

70.3 x 53.2 cm

27 5/8 x 21 in

A/P II

(04827)

£ 2,400.00

[View detail](#)



Elizabeth Blackadder

Orchidaceae Masdevallia Coccinea, 1993

etching

64 x 50 cm

25 1/4 x 19 3/4 in

A/P

(04828)

£ 2,400.00

[View detail](#)



Elizabeth Blackadder

Hong Kong Cat, 1995

drypoint

26 x 25 cm

10 1/4 x 9 7/8 in

A/P

(04832)

[View detail](#)

£ 1,050.00



Elizabeth Blackadder

Fred II, 2000

drypoint

31 x 33 cm

12 1/4 x 13 in

19/40

(04820)

[View detail](#)

£ 1,050.00



Elizabeth Blackadder

Roman Cats II, 1999

etching

23.6 x 23.8 cm

9 1/4 x 9 3/8 in

A/P

(04821)

[View detail](#)

£ 1,050.00



Elizabeth Blackadder

Piazzetta, 1998

etching

31.5 x 34 cm

12 3/8 x 13 3/8 in

edition of 30

(01813)

[View detail](#)

£ 780.00



Elizabeth Blackadder

Irises, 2012

etching

82 x 62 cm

32 1/4 x 24 3/8 in

edition of 50

(06481)

[View detail](#)

£ 3,800.00



Alasdair Gray

We Will All Go Down into the Streets of Water, 2008

screenprint

76 x 56 cm

29 7/8 x 22 in

edition of 60

(01996)

£ 1,200.00

[View detail](#)



Michael Fullerton

Landscape: Photographed by Peter Gutmann, 2014

screenprint on somerset newsprint

56 x 72 cm

22 1/8 x 28 3/8 in

edition of 20

(08180)

£ 840.00

[View detail](#)



Michael Fullerton

Trade-Mark, 2014

screenprint on somerset newsprint

56 x 72 cm

22 1/8 x 28 3/8 in

edition of 20

(08181)

£ 840.00

[View detail](#)



John Houston

Bridge and Garden, Autumn, Kyoto, 1999

monotype

75 x 78 cm

29 1/2 x 30 3/4 in

1/1

(15435)

£ 3,000.00

[View detail](#)



John Houston

From the Coast, Dusk, 1999

monotype

80 x 87.5 cm

31 1/2 x 34 1/2 in

1/1

(15434)

£ 3,000.00

[View detail](#)



John Houston
Sunset Gullane Bay II, 1989
woodcut
56.5 x 75.5 cm
22 1/4 x 29 3/4 in
edition of 30
(01144)

[View detail](#)

£ 960.00



John Houston
Bass Rock Dusk
screenprint
69 x 87 cm
27 1/8 x 34 1/4 in
edition of 35
(04816)

[View detail](#)

£ 1,200.00



Peter Howson
The Noble Dosser, 1987
woodcut
182 x 120.5 cm
71 5/8 x 47 1/2 in
edition of 30
(01602)

[View detail](#)

£ 6,000.00



Peter Howson
Magnus, 2001
monotype
82 x 68 cm
32 1/4 x 26 3/4 in
1/1
(01867)

[View detail](#)

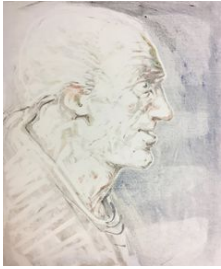
£ 3,600.00



Peter Howson
Sky, 2001
monotype
82 x 68 cm
32 1/4 x 26 3/4 in
1/1
(01870)

[View detail](#)

£ 3,600.00



Peter Howson
Pale, 2001
monotype
81.5 x 68 cm
32 1/8 x 26 3/4 in
1/1
(01869)

[View detail](#)

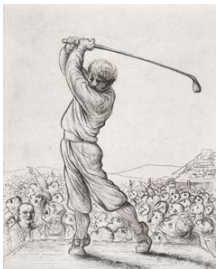
£ 3,600.00



Peter Howson
The Big Match, 1987
lithograph
60 x 55 cms
23.64 x 21.67 inches
edition of 30
(02512)

[View detail](#)

£ 840.00



Peter Howson
Par 3, 1995
etching
41 x 50 cms
16.15 x 19.7 inches
edition of 60
(02000)

[View detail](#)

£ 840.00



Janka Malkowska
The Source, 1989
screenprint
75 x 103 cm
29 1/2 x 40 1/2 in
edition of 20
(01918)

[View detail](#)

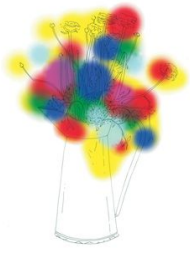
£ 1,500.00



Eduardo Paolozzi
Landscape I, 1990
etching
82.2 x 65.8 cm
32 3/8 x 25 7/8 in
edition of 25
(01866)

[View detail](#)

£ 1,800.00



Nicolas Party

Flowers and a Few Colours, 2013

screenprint

92 x 72 cm

36 1/4 x 28 3/8 in

edition of 40

(07263)

£ 3,600.00

[View detail](#)



Ciara Phillips

Calculated Risk, 2018

woodcut and screenprint

112 x 76 cm

44 1/8 x 29 7/8 in

varied edition of 12

(12584)

£ 960.00

[View detail](#)



Barbara Rae

Feasgar, 2014

carborundum

88 x 88 cm

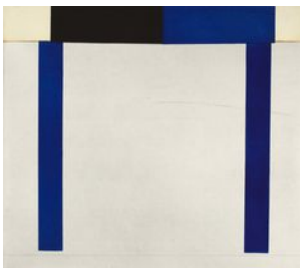
34 5/8 x 34 5/8 in

edition of 12

(09172)

£ 4,500.00

[View detail](#)



Philip Reeves

Bridge, 2005

etching

63 x 68 cm

24 3/4 x 26 3/4 in

edition of 30

(01359)

£ 960.00

[View detail](#)



Alison Watt

Shoal, 2013

screenprint

52 x 72 cm

20 1/2 x 28 3/8 in

edition of 40

(07293)

£ 1,200.00

[View detail](#)

JOHN BYRNE
Smokey Joe, 2010



etching
56 x 51 cm
22 1/8 x 20 1/8 in
edition of 10
(02846)

£ 1,800.00

JOHN BYRNE
The American Boy, 1999



lithograph
78 x 90 cm
30 3/4 x 35 3/8 in
edition of 30 (#14/30)
(00669)

£ 4,000.00

JOHN BYRNE
Il Pensiero, 2012



etching with watercolour

55 x 50 cm

21 5/8 x 19 3/4 in

A/P

(06417)

£ 3,600.00

JOHN BYRNE
Jeanne d'Arc



mixed media on paper

80 x 60 cm

31 1/2 x 23 5/8 in

(11267)

£ 8,400.00

JOHN BYRNE
Untitled (Hat I), 2018



monotype with watercolour and drawing in ink and pencil

56 x 76 cm

22 1/8 x 29 7/8 in

U/P

(12476)

£ 6,000.00

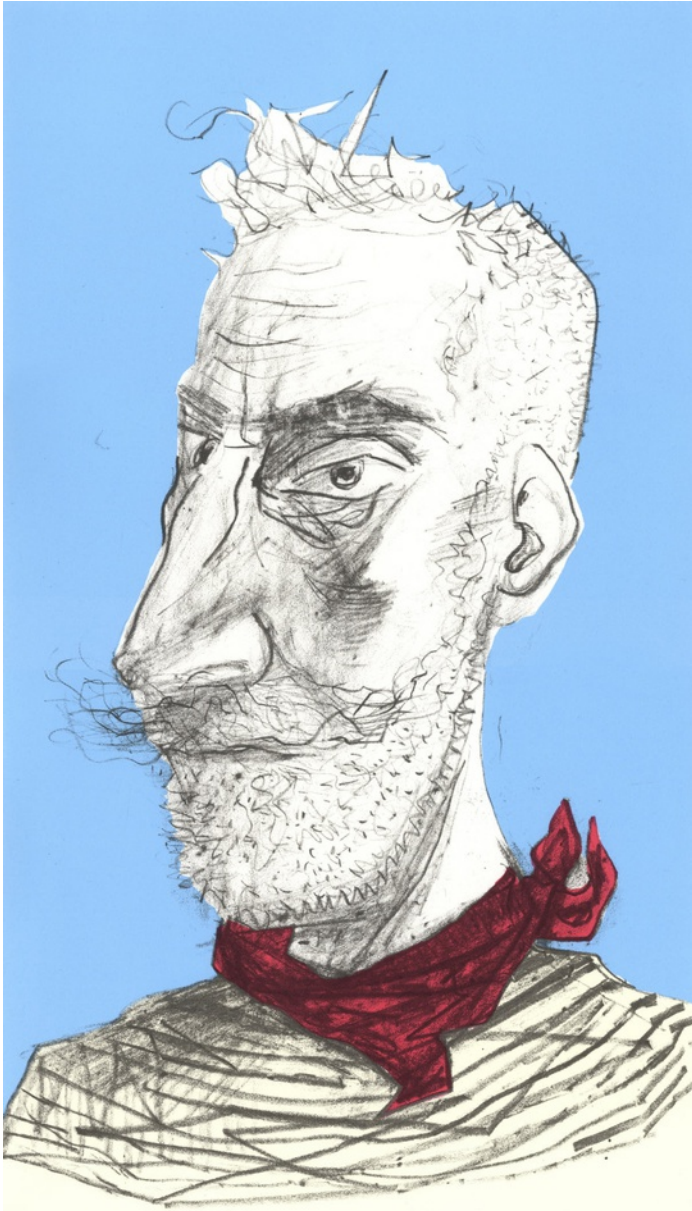
JOHN BYRNE
Angelo Bruno



monotype
56 x 76 cms
22.06 x 29.94 inches
(#1/1)
(01659)

£ 5,000.00

JOHN BYRNE
Red 'Kerchief, 2020



screenprint
72 x 46 cm
28 3/8 x 18 1/8 in
edition of 30
(15126)

£ 1,500.00

JOHN BYRNE
Untitled (Self), 2020



screenprint
47 x 31 cm
18 1/2 x 12 1/4 in
edition of 10
(15129)

£ 1,200.00

ELIZABETH BLACKADDER
Fred on Top of the Cupboard, 2003



etching
54 x 50 cm
21 1/4 x 19 3/4 in
edition of 80
(00859)

£ 2,400.00

ELIZABETH BLACKADDER
Abyssinian Cat in a Basket, 1995



etching
51 x 52 cm
20 1/8 x 20 1/2 in
33/70
(04831)

£ 2,400.00

ELIZABETH BLACKADDER
Amalia Sleeping, 2003



etching
54 x 50 cm
21 1/4 x 19 3/4 in
edition of 80
(00861)

£ 2,400.00

ELIZABETH BLACKADDER
Fred in a Box, 2003



etching
54 x 50 cm
21 1/4 x 19 3/4 in
edition of 80
(01148)

£ 2,400.00

ELIZABETH BLACKADDER

Orchidaceae *Masdevallia Dracula Bella*, 1993



etching

63.3 x 50.7 cm

24 7/8 x 20 in

edition of 40

(01699)

£ 2,400.00

ELIZABETH BLACKADDER
Orchidaceae Odontoglossum Grande, 1993



etching
63.3 x 50.7 cm
24 7/8 x 20 in
edition of 40
(01808)

£ 2,400.00

ELIZABETH BLACKADDER
Orchidaceae Paphiopedilum Sanderianum, 1993



etching and aquatint
63.3 x 50.7 cm
24 7/8 x 20 in
A/P
(04822)

£ 2,400.00

ELIZABETH BLACKADDER
Orchidaceae Coelogyne Cristata, 1999



aquatint and carborundum
44 x 55 cm
17 3/8 x 21 5/8 in
edition of 40
(01811)

£ 2,400.00

ELIZABETH BLACKADDER

Paphiopedilum Insigne Maudiae Coloratum, 1987



etching

70.3 x 53.2 cm

27 5/8 x 21 in

A/P II

(04827)

£ 2,400.00

ELIZABETH BLACKADDER

Orchidaceae Masdevallia Coccinea, 1993



etching

64 x 50 cm

25 1/4 x 19 3/4 in

A/P

(04828)

£ 2,400.00

ELIZABETH BLACKADDER
Hong Kong Cat, 1995



drypoint
26 x 25 cm
10 1/4 x 9 7/8 in
A/P
(04832)

£ 1,050.00

ELIZABETH BLACKADDER

Fred II, 2000



drypoint
31 x 33 cm
12 1/4 x 13 in
19/40
(04820)

£ 1,050.00

ELIZABETH BLACKADDER
Roman Cats II, 1999

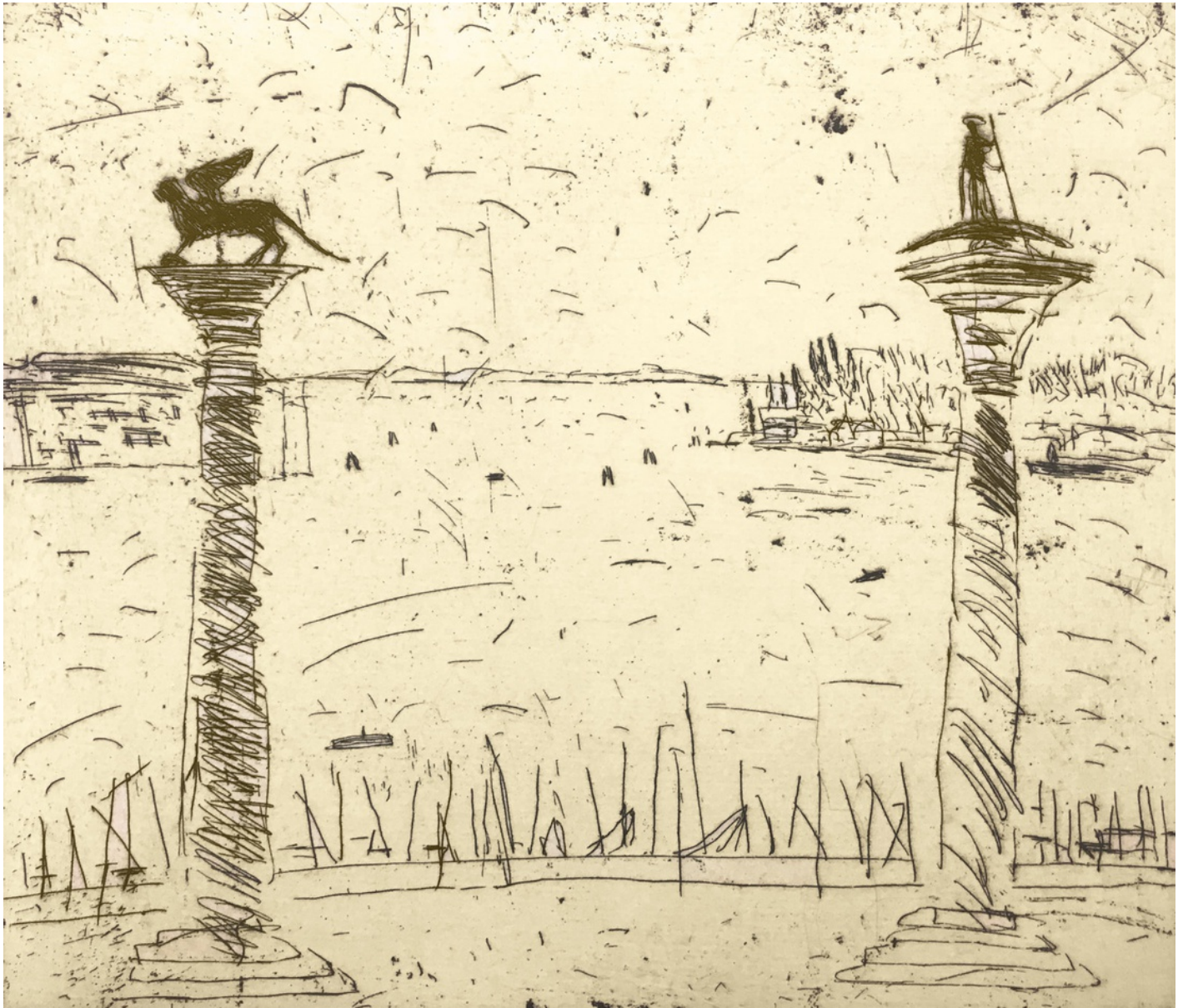


etching
23.6 x 23.8 cm
9 1/4 x 9 3/8 in
A/P
(04821)

£ 1,050.00

ELIZABETH BLACKADDER

Piazzetta, 1998



etching

31.5 x 34 cm

12 3/8 x 13 3/8 in

edition of 30

(01813)

£ 780.00

ELIZABETH BLACKADDER

Iris, 2012



etching
82 x 62 cm
32 1/4 x 24 3/8 in
edition of 50
(06481)

£ 3,800.00

ALASDAIR GRAY

We Will All Go Down into the Streets of Water, 2008



screenprint

76 x 56 cm

29 7/8 x 22 in

edition of 60

(01996)

£ 1,200.00

MICHAEL FULLERTON

Landscape: Photographed by Peter Gutmann, 2014



screenprint on somerset newsprint

56 x 72 cm

22 1/8 x 28 3/8 in

edition of 20

(08180)

£ 840.00

MICHAEL FULLERTON
Trade-Mark, 2014



screenprint on somerset newsprint
56 x 72 cm
22 1/8 x 28 3/8 in
edition of 20
(08181)

£ 840.00

JOHN HOUSTON

Bridge and Garden, Autumn, Kyoto, 1999



monotype

75 x 78 cm

29 1/2 x 30 3/4 in

1/1

(15435)

£ 3,000.00

JOHN HOUSTON
From the Coast, Dusk, 1999



monotype
80 x 87.5 cm
31 1/2 x 34 1/2 in
1/1
(15434)

£ 3,000.00

JOHN HOUSTON
Sunset Gullane Bay II, 1989



woodcut
56.5 x 75.5 cm
22 1/4 x 29 3/4 in
edition of 30
(01144)

£ 960.00

JOHN HOUSTON
Bass Rock Dusk



screenprint
69 x 87 cm
27 1/8 x 34 1/4 in
edition of 35
(04816)

£ 1,200.00

PETER HOWSON
The Noble Dasser, 1987



woodcut
182 x 120.5 cm
71 5/8 x 47 1/2 in
edition of 30
(01602)

£ 6,000.00

PETER HOWSON
Magnus, 2001



monotype
82 x 68 cm
32 1/4 x 26 3/4 in
1/1
(01867)

£ 3,600.00

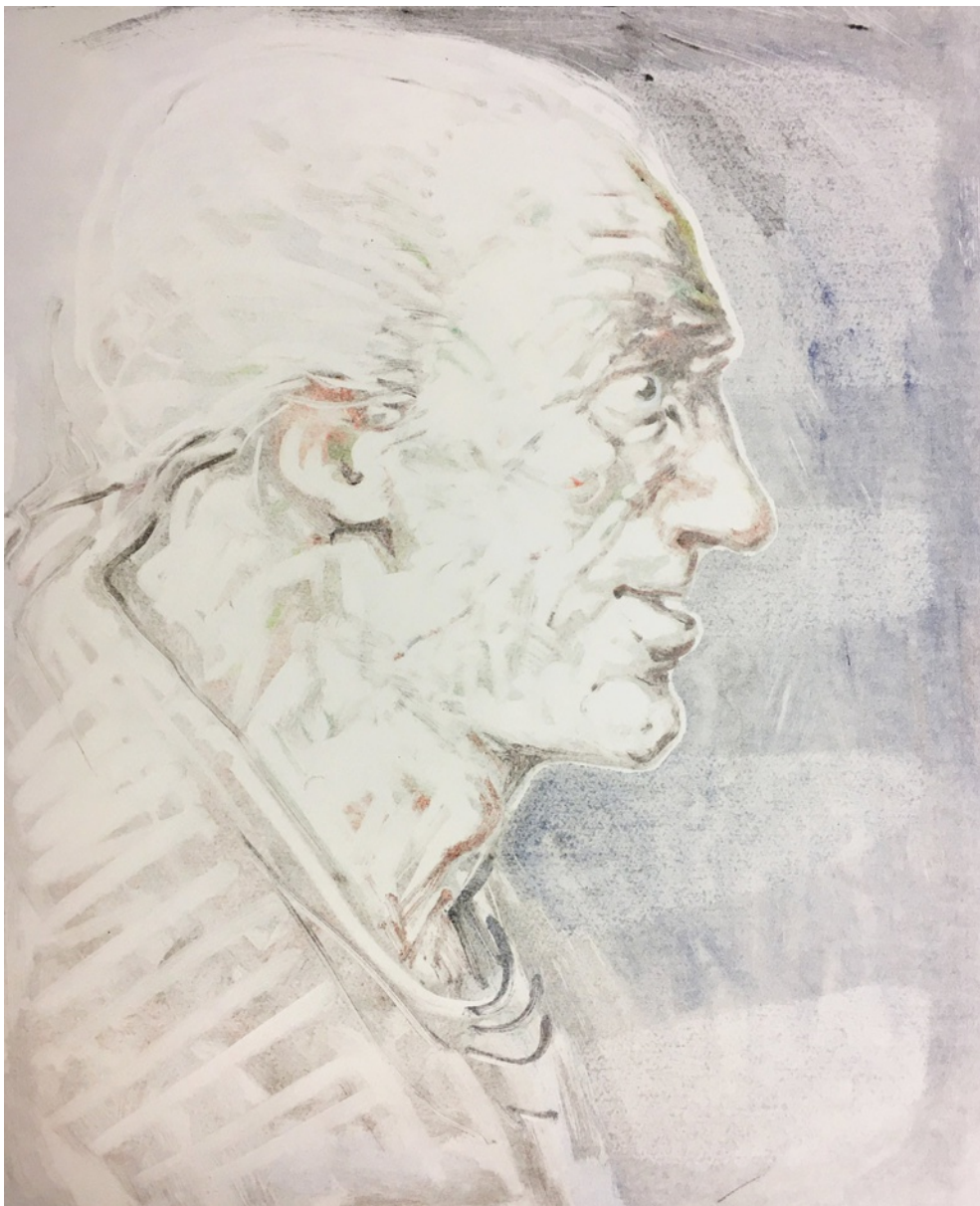
PETER HOWSON
Sky, 2001



monotype
82 x 68 cm
32 1/4 x 26 3/4 in
1/1
(01870)

£ 3,600.00

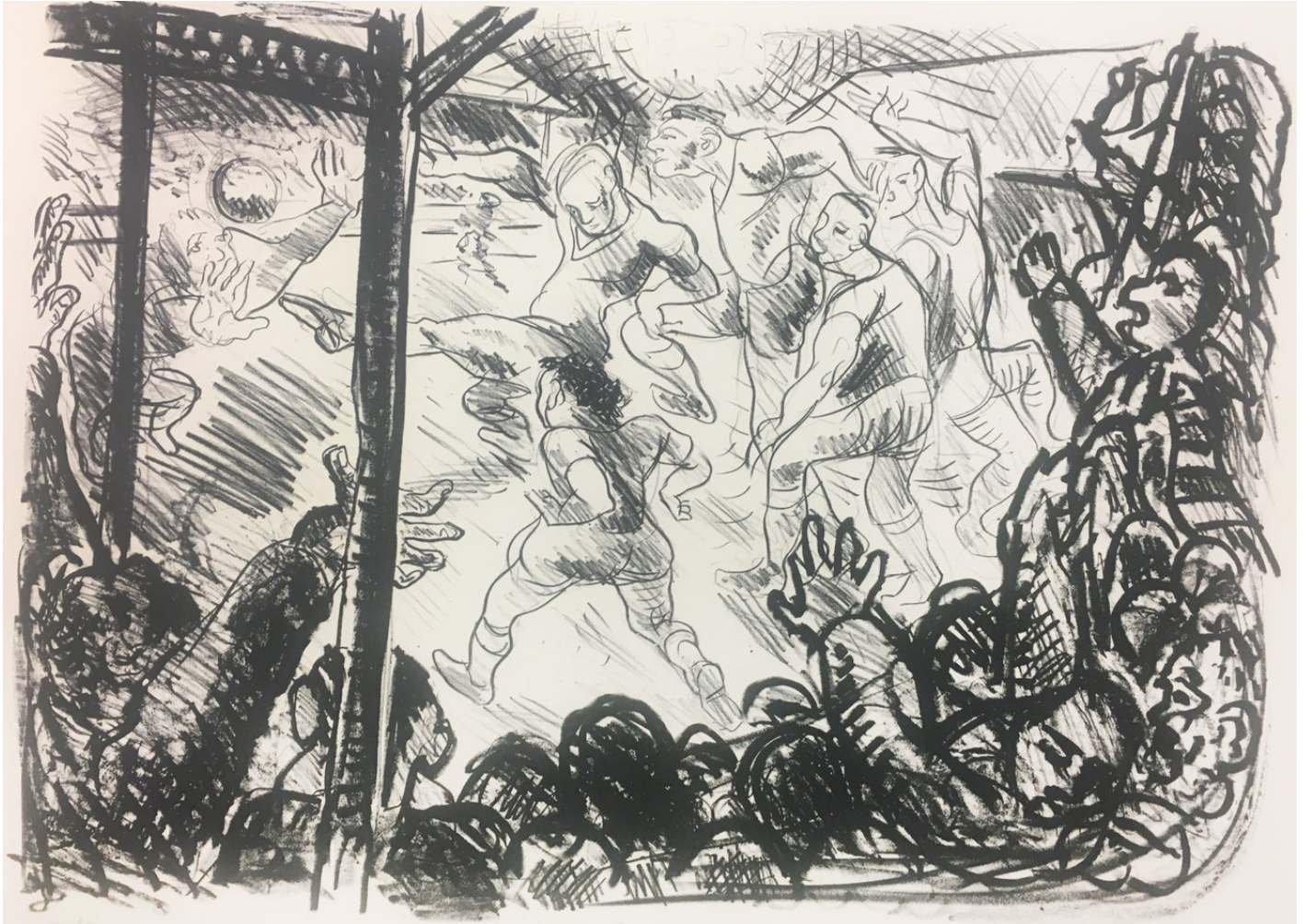
PETER HOWSON
Pale, 2001



monotype
81.5 x 68 cm
32 1/8 x 26 3/4 in
1/1
(01869)

£ 3,600.00

PETER HOWSON
The Big Match, 1987



lithograph
60 x 55 cms
23.64 x 21.67 inches
edition of 30
(02512)

£ 840.00

PETER HOWSON
Par 3, 1995



etching
41 x 50 cms
16.15 x 19.7 inches
edition of 60
(02000)

£ 840.00

JANKA MALKOWSKA
The Source, 1989



screenprint
75 x 103 cm
29 1/2 x 40 1/2 in
edition of 20
(01918)

£ 1,500.00

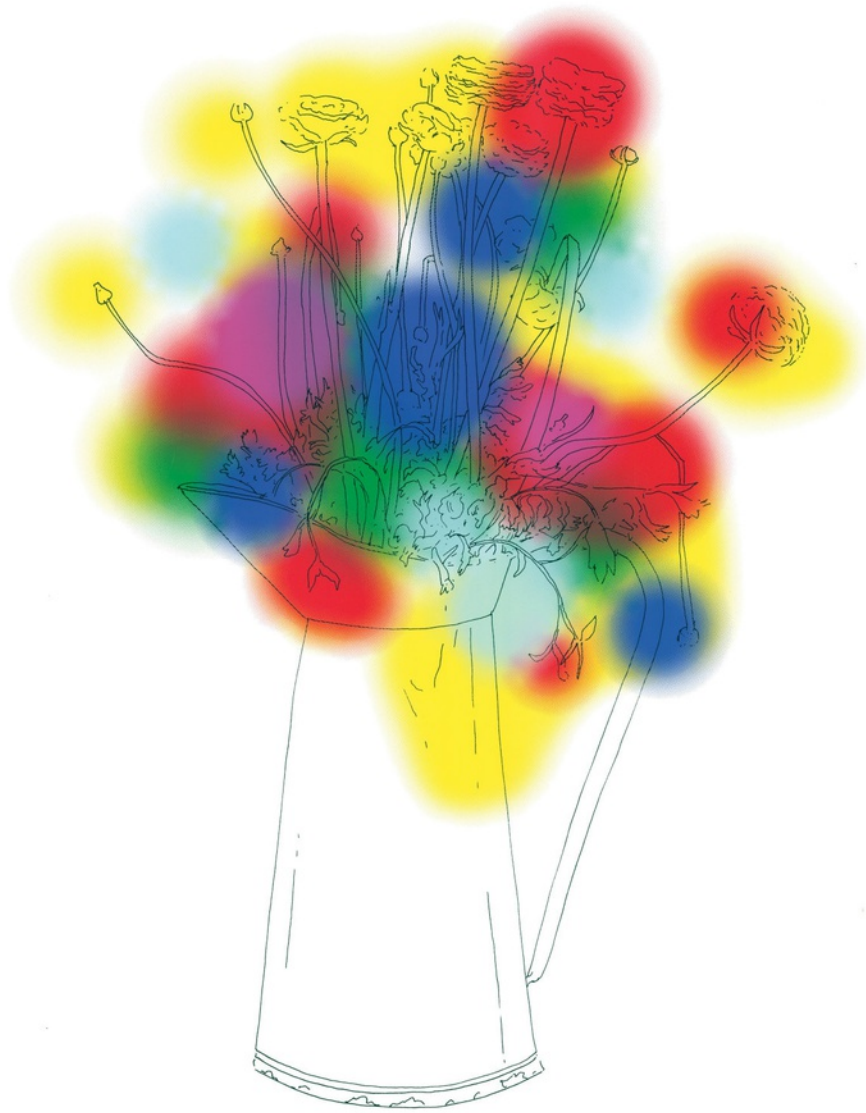
EDUARDO PAOLOZZI
Landscape I, 1990



etching
82.2 x 65.8 cm
32 3/8 x 25 7/8 in
edition of 25
(01866)

£ 1,800.00

NICOLAS PARTY
Flowers and a Few Colours, 2013



screenprint
92 x 72 cm
36 1/4 x 28 3/8 in
edition of 40
(07263)

£ 3,600.00

CIARA PHILLIPS
Calculated Risk, 2018



woodcut and screenprint
112 x 76 cm
44 1/8 x 29 7/8 in
varied edition of 12
(12584)

£ 960.00

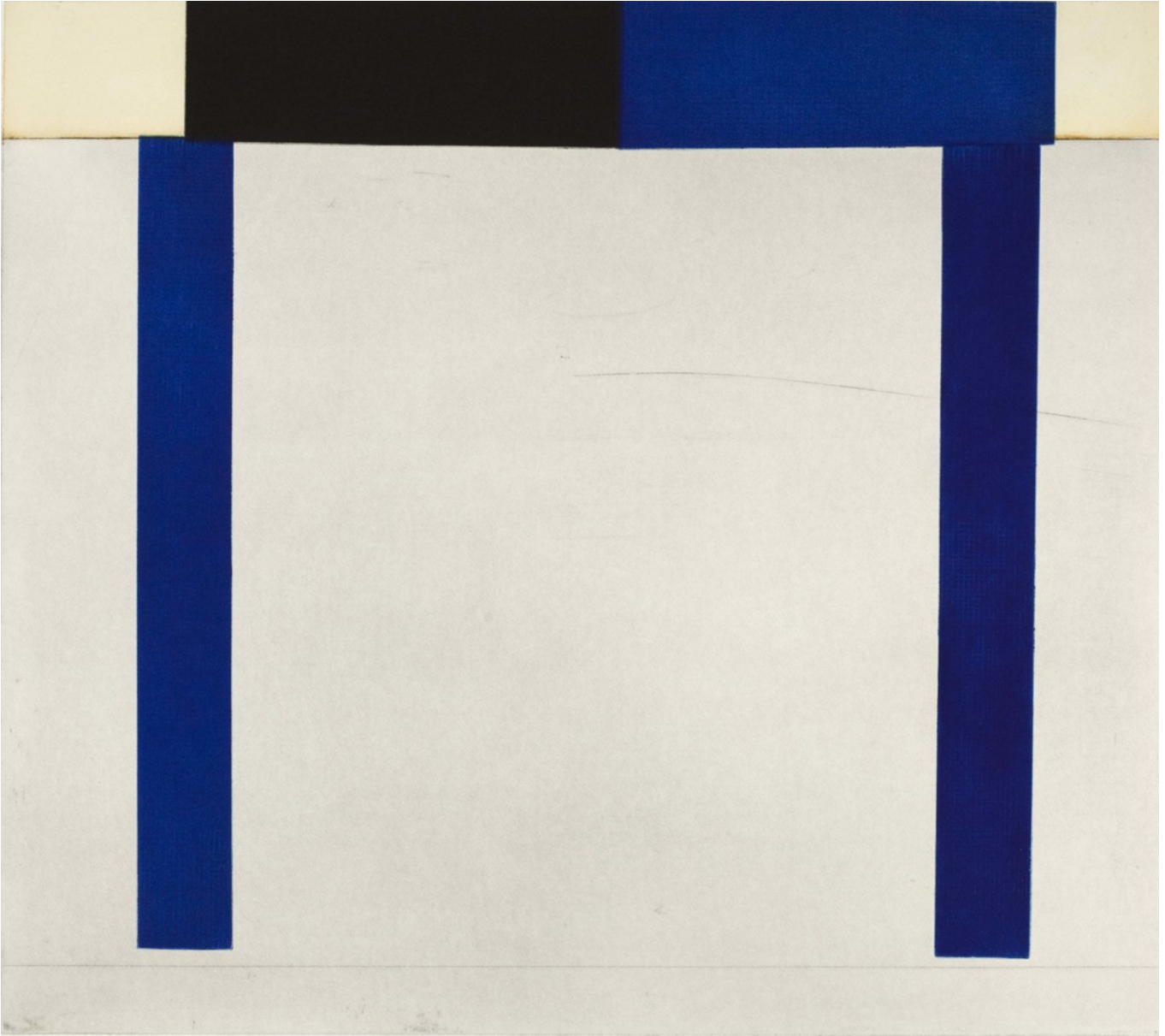
BARBARA RAE
Feasgar, 2014



carborundum
88 x 88 cm
34 5/8 x 34 5/8 in
edition of 12
(09172)

£ 4,500.00

PHILIP REEVES
Bridge, 2005



etching
63 x 68 cm
24 3/4 x 26 3/4 in
edition of 30
(01359)

£ 960.00

ALISON WATT
Shoal, 2013



screenprint
52 x 72 cm
20 1/2 x 28 3/8 in
edition of 40
(07293)

£ 1,200.00

**John Byrne - Elizabeth Blackadder - John
Houston - Peter Howson - Barbara Rae
- Eduardo Paolozzi**

**Alasdair Gray - Michael Fullerton -
Alison Watt - Ciara Phillips - Janka Malkowska -
Philip Reeves**

Works are sold framed but in most cases can be deframed if desired. Please contact us directly to discuss.

We are part of the OwnArt scheme which allows purchasers an opportunity to pay over 10 months interest-free. Contact us directly for more information on how to apply.

sales@glasgowprintstudio.co.uk - 0141 552 0704 - shop.glasgowprintstudio.co.uk