

# THE GALLERY OF EVERYTHING

## FELIPE JESÚS CONSALVOS // FRIEZE 2020 PREVIEW

The Gallery of Everything is proud to participate in this year's Frieze Art Fair online event with the Cuban-American artist, Felipe Jesús Consalvos. Curated in conjunction with Fleisher/Ollman Gallery, the online presentation will focus on rare, large-scale and three-dimensional material by this self-taught master collagist.

This is a preview of some of the works in Frieze 2020. The full selection will be available from Wednesday 7th October 2020 or upon request. For sales enquiries, please contact [ge@gallevery.com](mailto:ge@gallevery.com).

For full details and larger images, please see the end of this document.



**Felipe Jesus Consalvos** 1891 - c 1960  
*untitled (The Cubanola) [recto/verso]*, c 1920/60  
mixed media collage on  
133.1 x 70.9 cm  
52 3/8 x 27 7/8 in  
(FJC 779)

[View detail](#)



**Felipe Jesus Consalvos** 1891 - c 1960  
*untitled (Modern As Tomorrow, Astrology Explained, Manifesto of A Rebel, Wonders of America [quadriptych])*, c 1920/60  
printed material, glue on paper  
81 x 62 cm  
31 7/8 x 24 3/8 in  
(40 x 30.5 cm each)  
(15 3/4 x 12 1/8 in each)  
(FJC 796)

[View detail](#)



**Felipe Jesus Consalvos** 1891 - c 1960  
*untitled (Hypnotic America)*, c 1920/60  
printed material, glue on board  
75.6 x 45.1 cm  
29 3/4 x 17 3/4 in  
(FJC 795)

[View detail](#)



**Felipe Jesus Consalvos** 1891 - c 1960 [View detail](#)  
*untitled (The History of Our Country) [recto/verso]*, c 1920/60  
printed material, glue on paper  
70.6 x 55.2 cm  
27 3/4 x 21 3/4 in  
(FJC 716)



**Felipe Jesus Consalvos** 1891 - c 1960 [View detail](#)  
*untitled (The Great Red Dawn is Shining)*, c 1920/60  
printed material, glue on paper [recto/verso]  
62.9 x 50.2 cm  
24 3/4 x 19 3/4 in  
(FJC 786)



**Felipe Jesus Consalvos** 1891-c 1960 [View detail](#)  
*American Beauties*, c 1920/60  
printed paper, glue on wood, silk embroidery on linen  
58 x 43 x 3 cm  
22 7/8 x 16 7/8 x 1 1/8 in  
(CONS-009)



**Felipe Jesus Consalvos** 1891 - c 1960 [View detail](#)  
*untitled (Women)*, c 1920/60  
printed material, glue on board, pyrogravure  
43.2 x 29.2 cm  
17 1/8 x 11 1/2 in  
(FJC 78)



**Felipe Jesus Consalvos** 1891-c 1960 [View detail](#)  
*untitled (The Roman Saturnalia)*, c 1920/60  
printed paper, glue on photograph  
33.1 x 26.3 cm  
13 1/8 x 10 3/8 in  
(CONS-017)



**Felipe Jesus Consalvos** 1891 - c 1960 [View detail](#)  
*untitled (The American Revolution)*, c 1920/60  
printed material, glue on photograph  
31.8 x 24.1 cm  
12 1/2 x 9 1/2 in  
(FJC 544)



**Felipe Jesus Consalvos** 1891 - c 1960  
*untitled (Behind the Man Someone Else is Getting It)*, c 1920/60  
printed material, glue on print  
27.9 x 23.5 cm  
11 x 9 1/4 in  
(FJC 858)

[View detail](#)



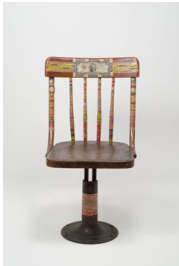
**Felipe Jesus Consalvos** 1891 - c 1960  
*untitled (The Wisdom Society)*, c 1920/60  
printed material, glue on photograph  
35.6 x 55.9 cm  
14 x 22 in  
(FJC 736)

[View detail](#)



**Felipe Jesus Consalvos** 1891 - c 1960  
*untitled (Are You a Good American?)*, c 1920/60  
printed material, glue on print  
25.4 x 30.5 cm  
10 x 12 in  
(FJC 650)

[View detail](#)



**Felipe Jesus Consalvos** 1891 - c 1960  
*untitled (Swivel Chair)*, c 1920/60  
printed material, glue on wood chair  
74.9 x 45.7 x 24.1 cm  
29 1/2 x 18 x 9 1/2 in  
(FJC 101)

[View detail](#)



**Felipe Jesus Consalvos** 1891 - c 1960  
*untitled (Furniture and Objects Installation)*, c 1920/60  
printed material, glue of varied furniture  
162.6 x 200 cm  
64 1/8 x 78 3/4 in

[View detail](#)



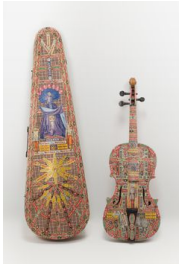
**Felipe Jesus Consalvos** 1891 - c 1960  
*untitled (Washington Tray)*, c 1920/60  
printed material, glue on metal tray  
33.7 x 46.4 x 3.8 cm  
13 1/4 x 18 1/4 x 1 1/2 in  
(FJC 127)

[View detail](#)



**Felipe Jesus Consalvos** 1891 - c 1960  
*untitled (Washington in the Morning (clock))*, c 1920/60  
 printed material, glue on alarm clock  
 8.9 cm diameter  
 3 1/2 in diameter  
 (FJC 164)

[View detail](#)



**Felipe Jesus Consalvos** 1891 - c 1960  
*untitled (Violin and Case)*, c 1920/60  
 printed material, glue on case and violin  
 Violin  
 58.4 x 20.3 x 4.4 cm  
 23 x 8 x 1 3/4 in

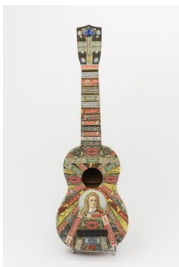
[View detail](#)

Case  
 80 x 24.1 x 9.5 cm  
 31 1/2 x 9 1/2 x 3 3/4 in  
 (FJC 669)



**Felipe Jesus Consalvos** 1891-c 1960  
*untitled (Musical Instrument Installation)*, c 1920/60  
 printed material, glue on musical instruments  
 52.1 x 90 x 5.7 cm  
 20 1/2 x 35 3/8 x 2 1/4 in

[View detail](#)



**Felipe Jesus Consalvos** 1891 - c 1960  
*untitled (Used Boogie Woogie Uke)*, c 1920/60  
 printed material, glue on uke  
 52.1 x 16.5 x 5.7 cm  
 20 1/2 x 6 1/2 x 2 1/4 in  
 (FJC 451)

[View detail](#)



**Felipe Jesus Consalvos** 1891 - c 1960  
*untitled (Marriage and the Family) [bound book]*, c 1920/60  
 printed material, glue on paper [bound book]  
 26 x 20.3 x 1.9 cm  
 10 1/4 x 8 x 3/4 in  
 (FJC 280)

[View detail](#)

FELIPE JESUS CONSALVOS  
untitled (*The Cubanola*) [recto/verso], c 1920/60



mixed media collage on  
133.1 x 70.9 cm  
52 3/8 x 27 7/8 in  
(FJC 779)

Image 1/2



Image 2/2

FELIPE JESUS CONSALVOS

untitled (Modern As Tomorrow, Astrology Explained, Manifesto of A Rebel, Wonders of America [quadriptych], c 1920/60



printed material, glue on paper

81 x 62 cm

31 7/8 x 24 3/8 in

(40 x 30.5 cm each)

(15 3/4 x 12 1/8 in each)

(FJC 796)

FELIPE JESUS CONSALVOS  
*untitled (Hypnotic America)*, c 1920/60



printed material, glue on board  
75.6 x 45.1 cm  
29 3/4 x 17 3/4 in  
(FJC 795)



FELIPE JESUS CONSALVOS  
untitled (*The History of Our Country*) [recto/verso], c 1920/60



printed material, glue on paper

70.6 x 55.2 cm

27 3/4 x 21 3/4 in

(FJC 716)

Image 1/2



Image 2/2

FELIPE JESUS CONSALVOS  
untitled (*The Great Red Dawn is Shining*), c 1920/60



printed material, glue on paper [recto/verso]

62.9 x 50.2 cm

24 3/4 x 19 3/4 in

(FJC 786)

Image 1/2



Image 2/2

FELIPE JESUS CONSALVOS  
*American Beauties*, c 1920/60



printed paper, glue on wood, silk embroidery on linen  
58 x 43 x 3 cm  
22 7/8 x 16 7/8 x 1 1/8 in  
(CONS-009)

FELIPE JESUS CONSALVOS  
*untitled (Women)*, c 1920/60



printed material, glue on board, pyrogravure

43.2 x 29.2 cm

17 1/8 x 11 1/2 in

(FJC 78)

FELIPE JESUS CONSALVOS  
untitled (*The Roman Saturnalia*), c 1920/60



printed paper, glue on photograph  
33.1 x 26.3 cm  
13 1/8 x 10 3/8 in  
(CONS-017)

FELIPE JESUS CONSALVOS  
untitled (*The American Revolution*), c 1920/60



printed material, glue on photograph  
31.8 x 24.1 cm  
12 1/2 x 9 1/2 in  
(FJC 544)



FELIPE JESUS CONSALVOS

untitled (*Behind the Man Someone Else is Getting It*) , c 1920/60



printed material, glue on print

27.9 x 23.5 cm

11 x 9 1/4 in

(FJC 858)

FELIPE JESUS CONSALVOS  
untitled (*The Wisdom Society*), c 1920/60



printed material, glue on photograph  
35.6 x 55.9 cm  
14 x 22 in  
(FJC 736)

FELIPE JESUS CONSALVOS  
untitled (Are You a Good American?), c 1920/60



printed material, glue on print  
25.4 x 30.5 cm  
10 x 12 in  
(FJC 650)

FELIPE JESUS CONSALVOS  
*untitled (Swivel Chair)*, c 1920/60



printed material, glue on wood chair  
74.9 x 45.7 x 24.1 cm  
29 1/2 x 18 x 9 1/2 in  
(FJC 101)

FELIPE JESUS CONSALVOS  
*untitled (Furniture and Objects Installation)*, c 1920/60



printed material, glue of varied furniture  
162.6 x 200 cm  
64 1/8 x 78 3/4 in

Image 1/7



Image 2/7



Image 3/7



Image 4/7





Image 5/7



Image 6/7



Image 7/7



FELIPE JESUS CONSALVOS

*untitled (Washington in the Morning (clock))*, c 1920/60



printed material, glue on alarm clock

8.9 cm diameter

3 1/2 in diameter

(FJC 164)

FELIPE JESUS CONSALVOS  
*untitled (Violin and Case)*, c 1920/60



printed material, glue on case and violin

Violin

58.4 x 20.3 x 4.4 cm

23 x 8 x 1 3/4 in

Case

80 x 24.1 x 9.5 cm

31 1/2 x 9 1/2 x 3 3/4 in

(FJC 669)

Image 1/2



Image 2/2

FELIPE JESUS CONSALVOS  
*untitled (Musical Instrument Installation)*, c 1920/60



printed material, glue on musical instruments  
52.1 x 90 x 5.7 cm  
20 1/2 x 35 3/8 x 2 1/4 in

Image 1/8



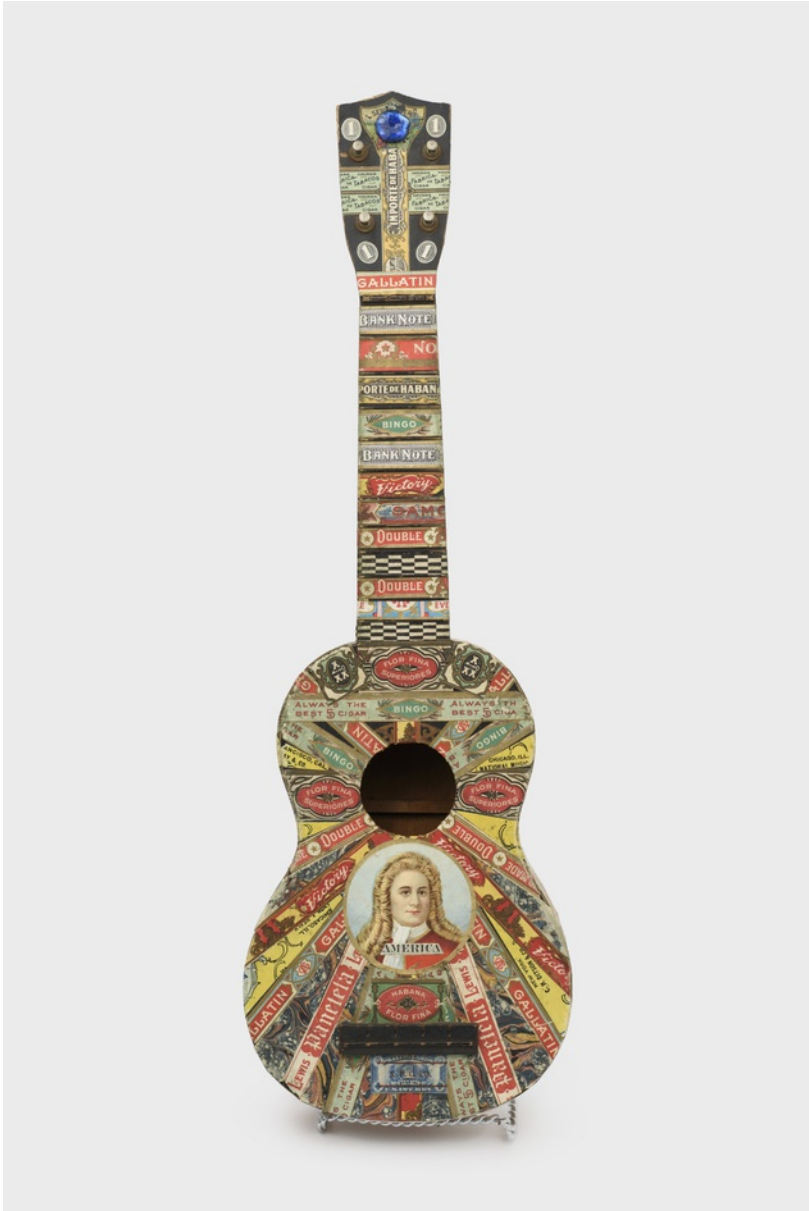


Image 2/8

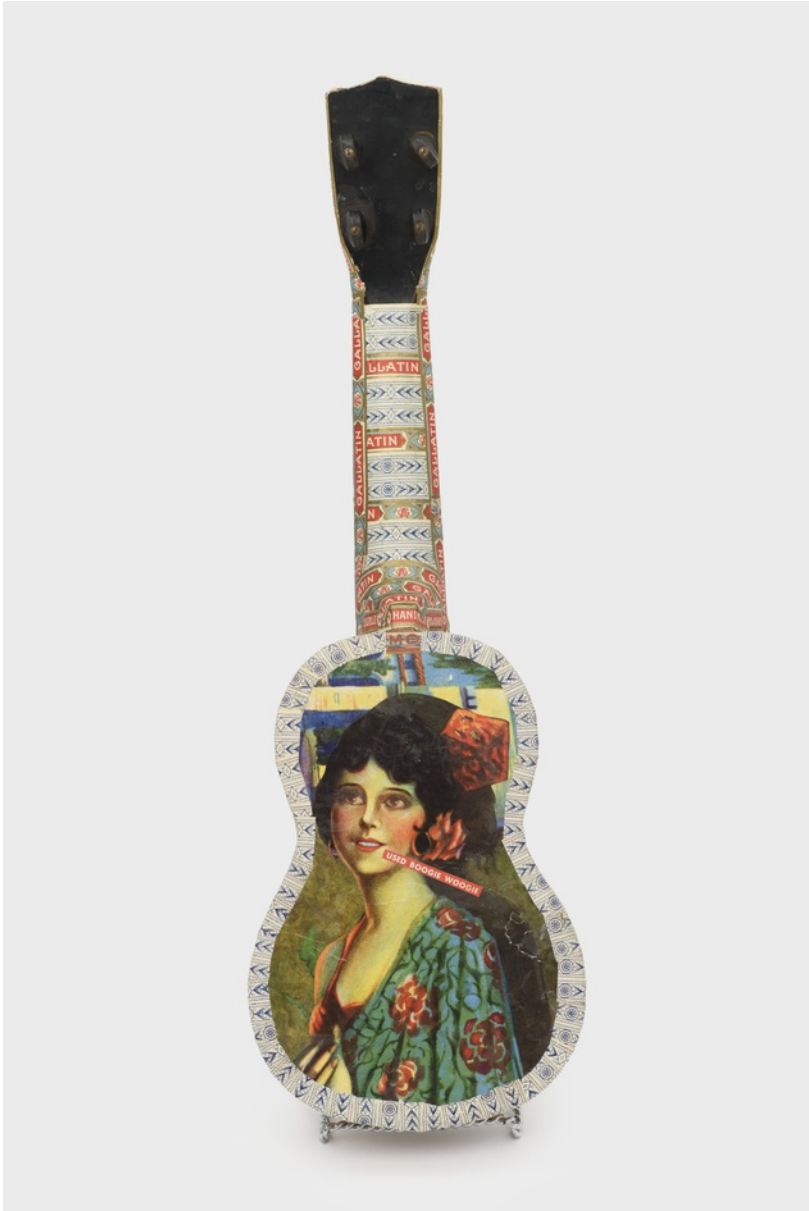


Image 3/8

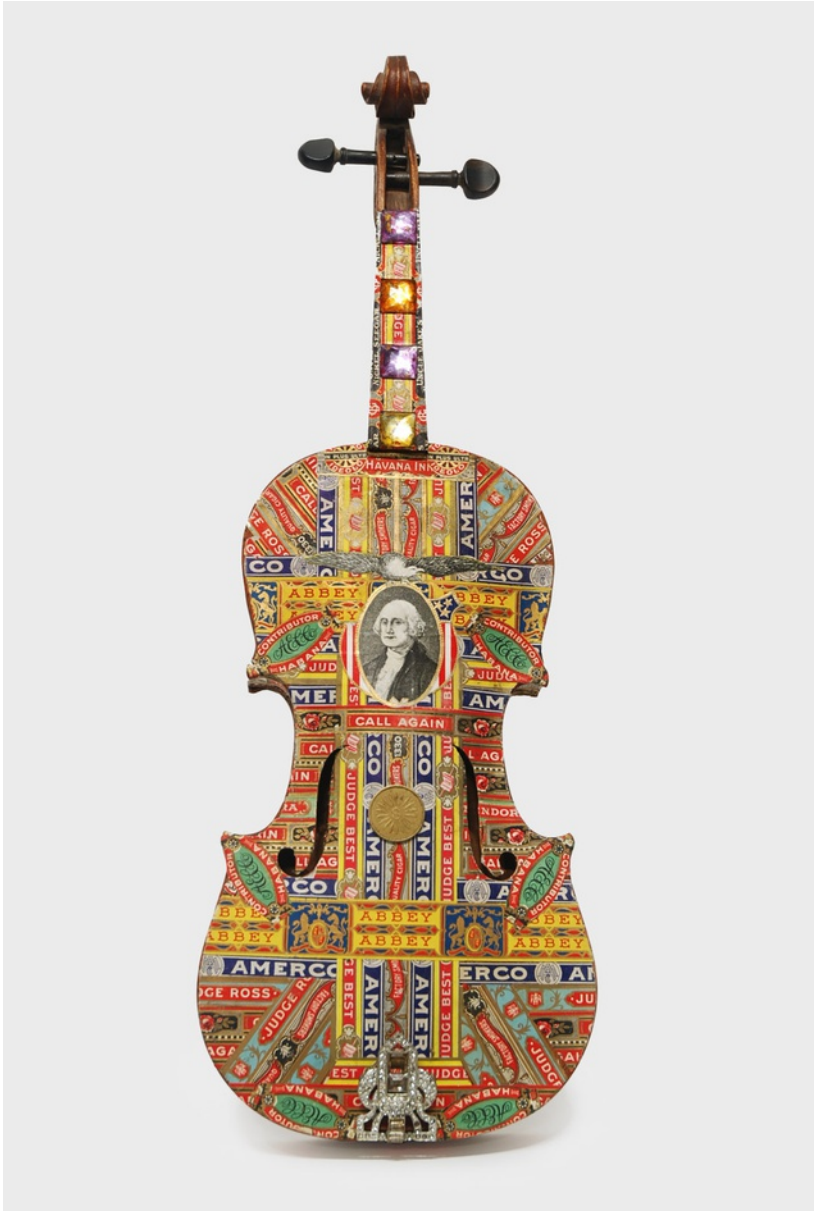


Image 4/8

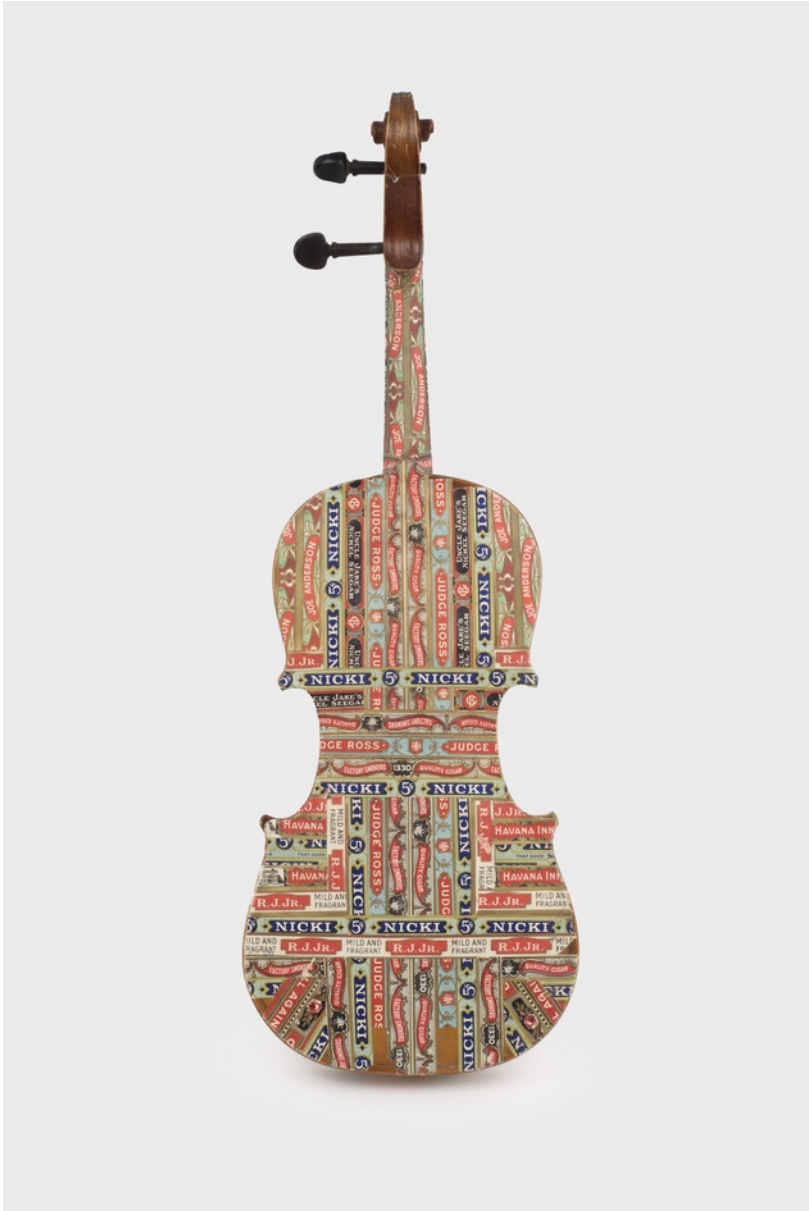


Image 5/8



Image 6/8



Image 7/8



Image 8/8

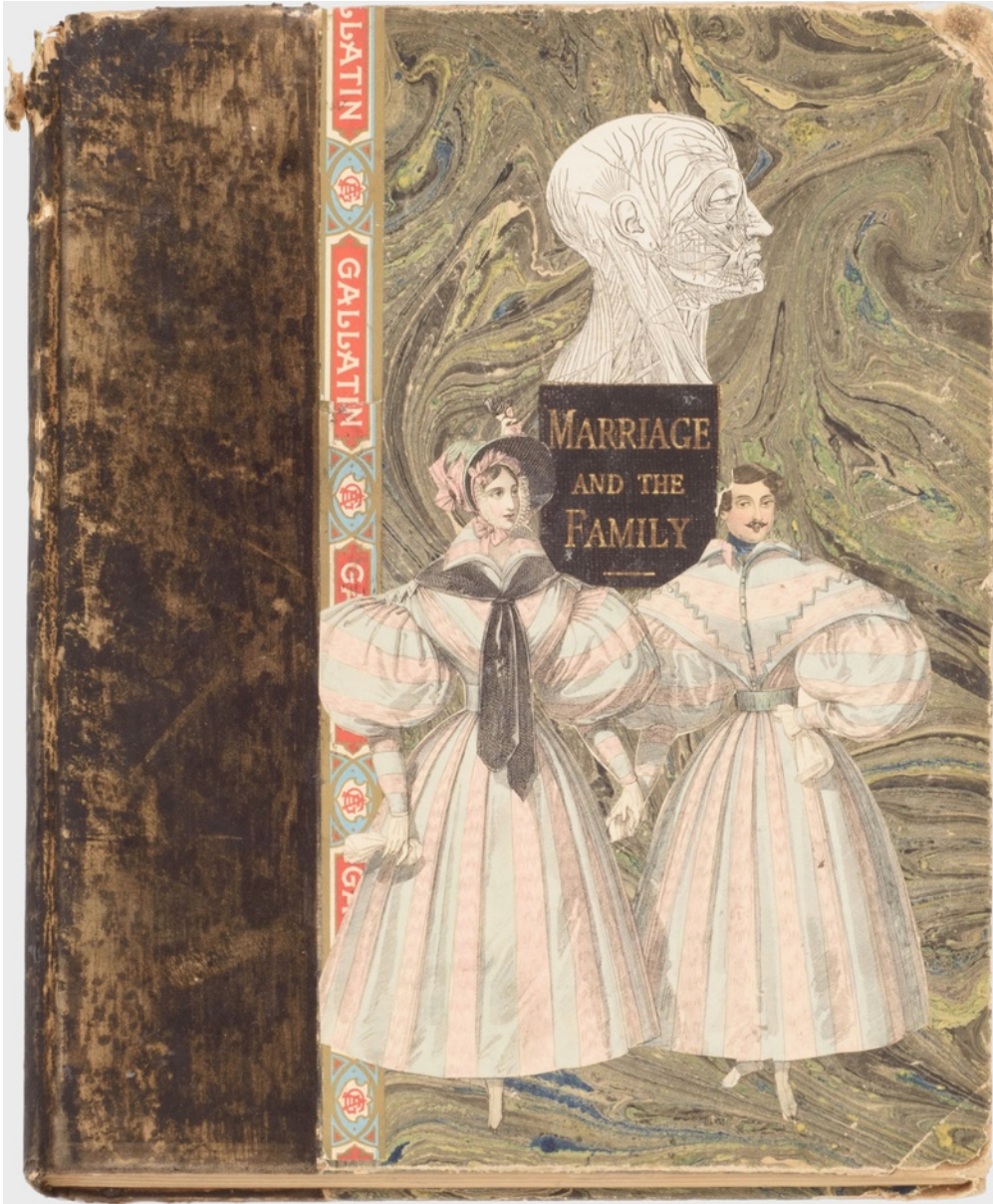
FELIPE JESUS CONSALVOS  
*untitled (Used Boogie Woogie Uke)*, c 1920/60



printed material, glue on uke  
52.1 x 16.5 x 5.7 cm  
20 1/2 x 6 1/2 x 2 1/4 in  
(FJC 451)



FELIPE JESUS CONSALVOS  
*untitled (Marriage and the Family)* [bound book], c 1920/60



printed material, glue on paper [bound book]

26 x 20.3 x 1.9 cm

10 1/4 x 8 x 3/4 in

(FJC 280)

Image 1/13



Image 2/13

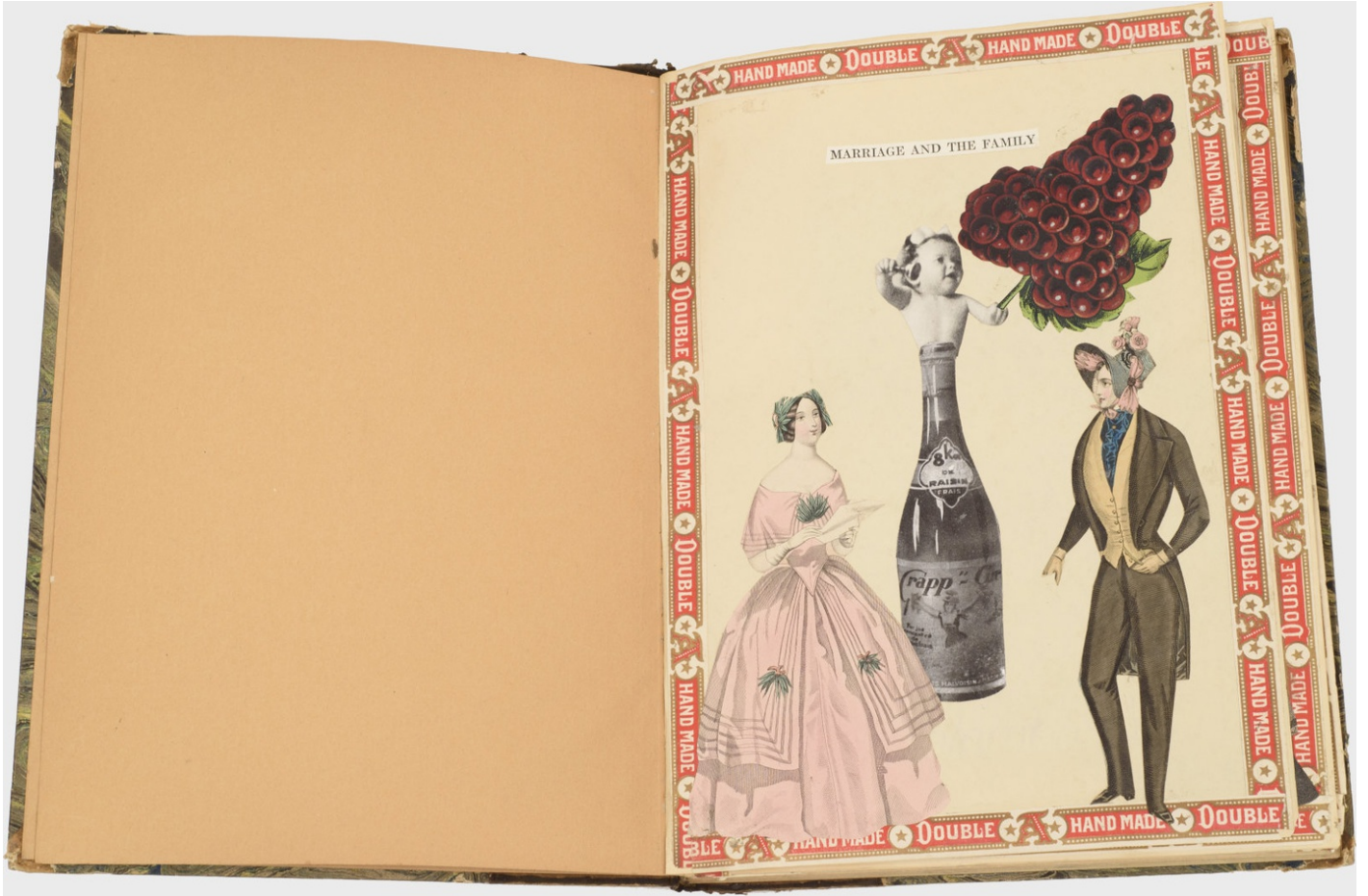


Image 3/13



Image 4/13



Image 5/13



Image 6/13



Image 7/13



Image 8/13





Image 9/13



Image 10/13



Image 11/13



Image 12/13



Image 13/13