

THE GALLERY OF EVERYTHING

A SUMMER OF GODS AND GODDESSES 14.07.24 >

15.09.24 NEK CHAND SAINI (1924 - 2015) &NBSP; SELECTED WORKS

The Gallery of Everything presents, *A Summer of Gods and Goddesses*, an installation of original sculptures and figures by Nek Chand Saini (1924 - 2015).

Born in India before the partition, Saini was a refugee who went on to become a cultural figure of international renown. His *gesamtkunstwerk* was a secret maze of narrow walkways and sloping gardens, decorated with hand-crafted figurines of cement, ceramic, bangle and bottle top.

Originally titled *The Kingdom of Gods and Goddesses*, Saini's physical dreamscape was partially inspired by childhood fables of magical empires, recounted to him by his mother before their forced emigration. Yet it was his engagement with Chandigarh, the capital city designed by Albert Mayer, Matthew Nowicki and Le Corbusier, which brought it into being.

In his lifetime, Saini never formally acknowledged his role as author of this oeuvre; nor did he recognise the unauthorised land-grab, which formed the basis of his monumental artwork, as a political or post-colonial gesture. This, despite its radical organic form and content, and its contrast to Chandigarh's monumental concrete structures and disruptive architectural lines.

Instead, Saini acknowledged his role in building a legacy for everyday Indian people: a place where they could simply go, discover and be.

In this centenary year of Nek Chand Saini's birth, the gallery of everything honours his profound achievement with an installation of works from the 1960s, 1970s and 1980s, including original ceramic and bangle figures created by Saini and his team of workers.

For available works please contact ge@gallevery.com

For full details and larger images, please see the end of this document.



Nek Chand Saini

Untitled (standing figure), 1980/90

metal, cement, ceramic

179 x 54 x 51 cm

70 1/2 x 21 1/4 x 20 in

(CHAN-032)

£ 55,000

[View detail](#)



Nek Chand Saini

Untitled (standing figure), 1980/90

metal, cement, ceramic

158 x 51 x 54 cm

62 1/4 x 20 x 21 1/4 in

(CHAN-053)

£ 55,000

[View detail](#)



Nek Chand Saini

Untitled (standing figure), 1980/90

metal, cement, ceramic

158 x 51 x 59 cm

62 1/4 x 20 x 23 1/4 in

(CHAN-031)

£ 55,000

[View detail](#)



Nek Chand Saini

Untitled (standing figure), 1970/80

metal, cement, ceramic, rock

137 x 71 x 39 cm

54 x 28 x 15 1/4 in

(CHAN-068)

£ 45,000

[View detail](#)



Nek Chand Saini

Untitled (standing figure), 1970/80

metal, cement, ceramic, rock

149 x 56 x 34 cm

58 3/4 x 22 x 13 1/2 in

(CHAN-069)

£ 45,000

[View detail](#)



Nek Chand Saini

Untitled (totem), 1980/90

metal, cement, stone, ceramic

144 x 40 x 40 cm

56 5/8 x 15 3/4 x 15 3/4 in

(CHAN-036)

[View detail](#)



Nek Chand Saini

Untitled (standing figure), 1980/90
cement
86 x 36 x 27 cm
33 7/8 x 14 1/8 x 10 5/8 in
(CHAN-110)

[View detail](#)

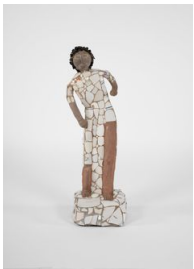


Nek Chand Saini

Untitled (standing figure), 1980/90
metal, cement, glass, ceramic
80 x 38 x 21 cm
31 1/2 x 15 x 8 1/4 in
(CHAN-109)

[View detail](#)

£ 35,000



Nek Chand Saini

Untitled (standing figure), 1970/80
metal, cement, clinker, ceramic
74 x 22 x 21 cm
29 1/4 x 8 3/4 x 8 1/4 in
(CHAN-064)

[View detail](#)

£ 32,500



Nek Chand Saini

Untitled (standing figure), 1970/80
metal, cement, clinker, ceramic
71 x 22 x 20 cm
28 x 8 3/4 x 7 3/4 in
(CHAN-063)

[View detail](#)

£ 32,500



Nek Chand Saini

Untitled (seated figure), 1980/90
metal, cement, clinker, ceramic
46 x 41 x 28 cm
18 x 16 1/4 x 11 in
(CHAN-007)

[View detail](#)

£ 22,500



Nek Chand Saini

Untitled (seated figure), 1980/90
metal, cement, clinker, ceramic
46 x 41 x 30 cm
18 1/8 x 16 1/8 x 11 7/8 in
(CHAN-006)

[View detail](#)

£ 22,500



Nek Chand Saini

Untitled (bird), 1980/90

metal, cement, glass, ceramic

96 x 124 x 35 cm

37 3/4 x 48 7/8 x 13 3/4 in

(CHAN-028)

[View detail](#)

£ 45,000

NEK CHAND SAINI
Untitled (standing figure), 1980/90



metal, cement, ceramic
179 x 54 x 51 cm
70 1/2 x 21 1/4 x 20 in
(CHAN-032)

£ 55,000

Image 1/3



Image 2/3



Image 3/3

NEK CHAND SAINI
Untitled (standing figure), 1980/90



metal, cement, ceramic
158 x 51 x 54 cm
62 1/4 x 20 x 21 1/4 in
(CHAN-053)

£ 55,000

Image 1/3



Image 2/3



Image 3/3

NEK CHAND SAINI
Untitled (standing figure), 1980/90



metal, cement, ceramic
158 x 51 x 59 cm
62 1/4 x 20 x 23 1/4 in
(CHAN-031)

£ 55,000

Image 1/3



Image 2/3



Image 3/3

NEK CHAND SAINI
Untitled (standing figure), 1970/80



metal, cement, ceramic, rock
137 x 71 x 39 cm
54 x 28 x 15 1/4 in
(CHAN-068)

£ 45,000

NEK CHAND SAINI
Untitled (standing figure), 1970/80



metal, cement, ceramic, rock
149 x 56 x 34 cm
58 3/4 x 22 x 13 1/2 in
(CHAN-069)

£ 45,000

NEK CHAND SAINI
Untitled (totem), 1980/90



metal, cement, stone, ceramic
144 x 40 x 40 cm
56 5/8 x 15 3/4 x 15 3/4 in
(CHAN-036)

NEK CHAND SAINI
Untitled (standing figure), 1980/90



cement
86 x 36 x 27 cm
33 7/8 x 14 1/8 x 10 5/8 in
(CHAN-110)

Image 1/3



Image 2/3



Image 3/3

NEK CHAND SAINI
Untitled (standing figure), 1980/90



metal, cement, glass, ceramic

80 x 38 x 21 cm
31 1/2 x 15 x 8 1/4 in
(CHAN-109)

£ 35,000

NEK CHAND SAINI
Untitled (standing figure), 1970/80



metal, cement, clinker, ceramic
74 x 22 x 21 cm
29 1/4 x 8 3/4 x 8 1/4 in
(CHAN-064)

£ 32,500

NEK CHAND SAINI
Untitled (standing figure), 1970/80



metal, cement, clinker, ceramic
71 x 22 x 20 cm
28 x 8 3/4 x 7 3/4 in
(CHAN-063)

£ 32,500

NEK CHAND SAINI
Untitled (seated figure), 1980/90



metal, cement, clinker, ceramic
46 x 41 x 28 cm
18 x 16 1/4 x 11 in
(CHAN-007)

£ 22,500

Image 1/3



Image 2/3



Image 3/3

NEK CHAND SAINI
Untitled (seated figure), 1980/90



metal, cement, clinker, ceramic
46 x 41 x 30 cm
18 1/8 x 16 1/8 x 11 7/8 in
(CHAN-006)

£ 22,500

Image 1/3



Image 2/3



Image 3/3

NEK CHAND SAINI
Untitled (bird), 1980/90



metal, cement, glass, ceramic
96 x 124 x 35 cm
37 3/4 x 48 7/8 x 13 3/4 in
(CHAN-028)

£ 45,000

Image 1/2



Image 2/2