

The image is a dark, abstract painting. The central focus is a large, textured black area that appears to be a doorway or a deep shadow. To the left and right, there are vertical bands of lighter, textured colors, including shades of brown, tan, and white, suggesting walls or architectural elements. The foreground is dominated by dark, horizontal brushstrokes in shades of black, dark brown, and grey, creating a sense of depth and shadow. The overall composition is layered and textured, with visible brushwork and a sense of depth.

PETER GODWIN
Studio Interiors

PETER GODWIN

Studio Interiors

26 October – 16 November 2024

Opening 26 October, 3pm

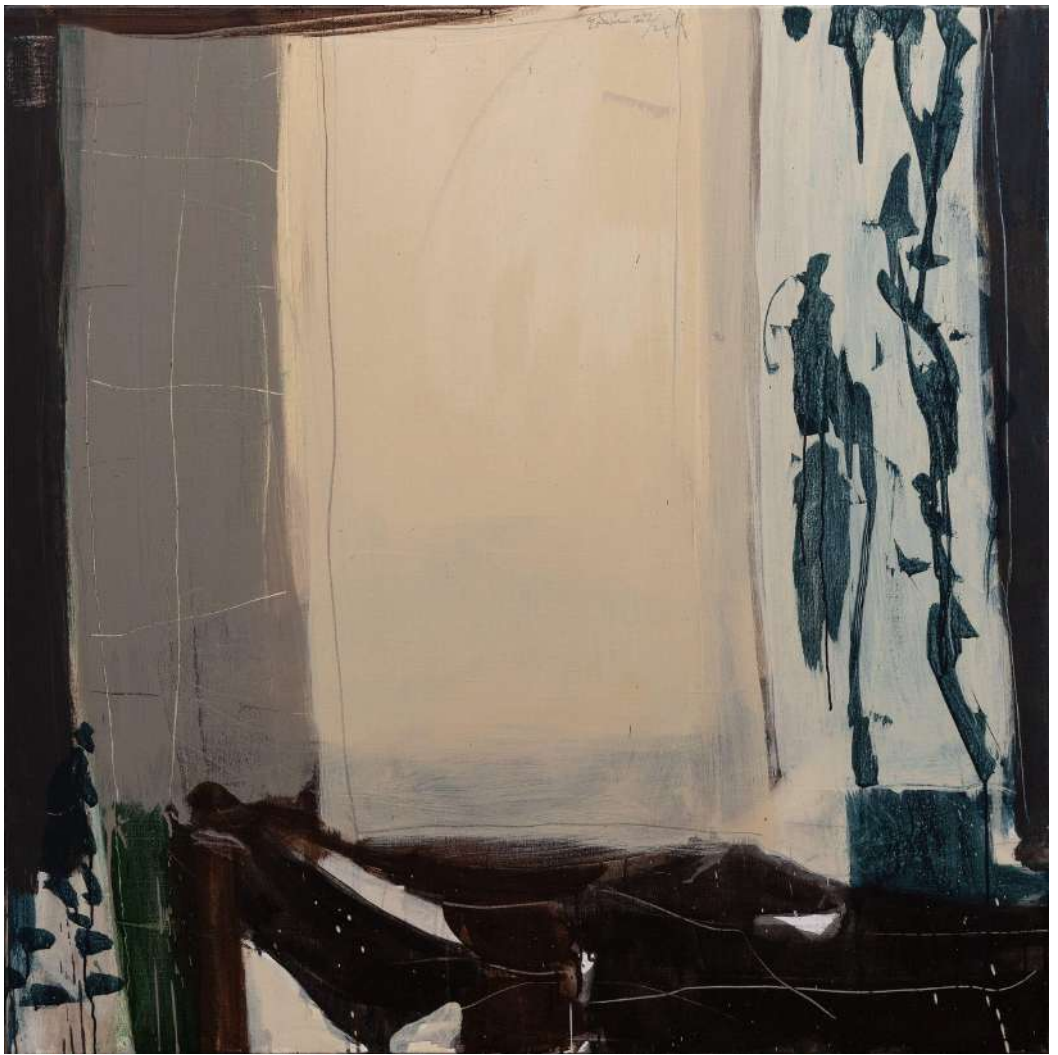
Peter Godwin is recognised as one of Australia's most accomplished painters. Revered for his masterful combination of figuration and abstraction, his work is dominated by the interiors and still lifes he has become known for.

Through the use of a wonderfully restrained colour palette, clever composition with empty voids and evocative use of light, Godwin is able to produce entrancing images that are not overloaded with weighty meaning but highlight the evocative pleasures and joy of a paint-loaded brush.

Languid, flowing lines sweep through his pictures, delineating the forms of a chair, table, window or interior screen. Familiar motifs become objects of discovery and reinvention. Oceanic artefacts, shells, fabric and sculpture, from his own collection, are strewn across tabletops. What may seem mundane at first, in his hands, is transformed into a vital, poetic space.

A graduate of the National Art School in Sydney, Peter Godwin lectured in painting, drawing and printmaking at the school for many years. He was awarded the Gruner Prize at the Art Gallery of New South Wales (1985, 1979) and was the recipient of the Mosman Art Prize (2017, 2004) and a finalist in the Sulman Prize at the Art Gallery of New South Wales (2007). A major survey of Godwin's work is being held at Orange Regional Gallery in 2024 and SH Ervin Gallery in 2025.

Godwin's work is held in numerous public collections including the National Gallery of Australia, Art Gallery of New South Wales, Government House, Sydney, Gosford Regional Art Gallery, Sydney Institute of Technology Collection, Parliament House, Canberra and Mosman Art Gallery.



Studio, Canvas, Blue on White, tempera emulsion & oil on linen, 122 x 122 cm, 126 x 126 cm (framed) \$30,000



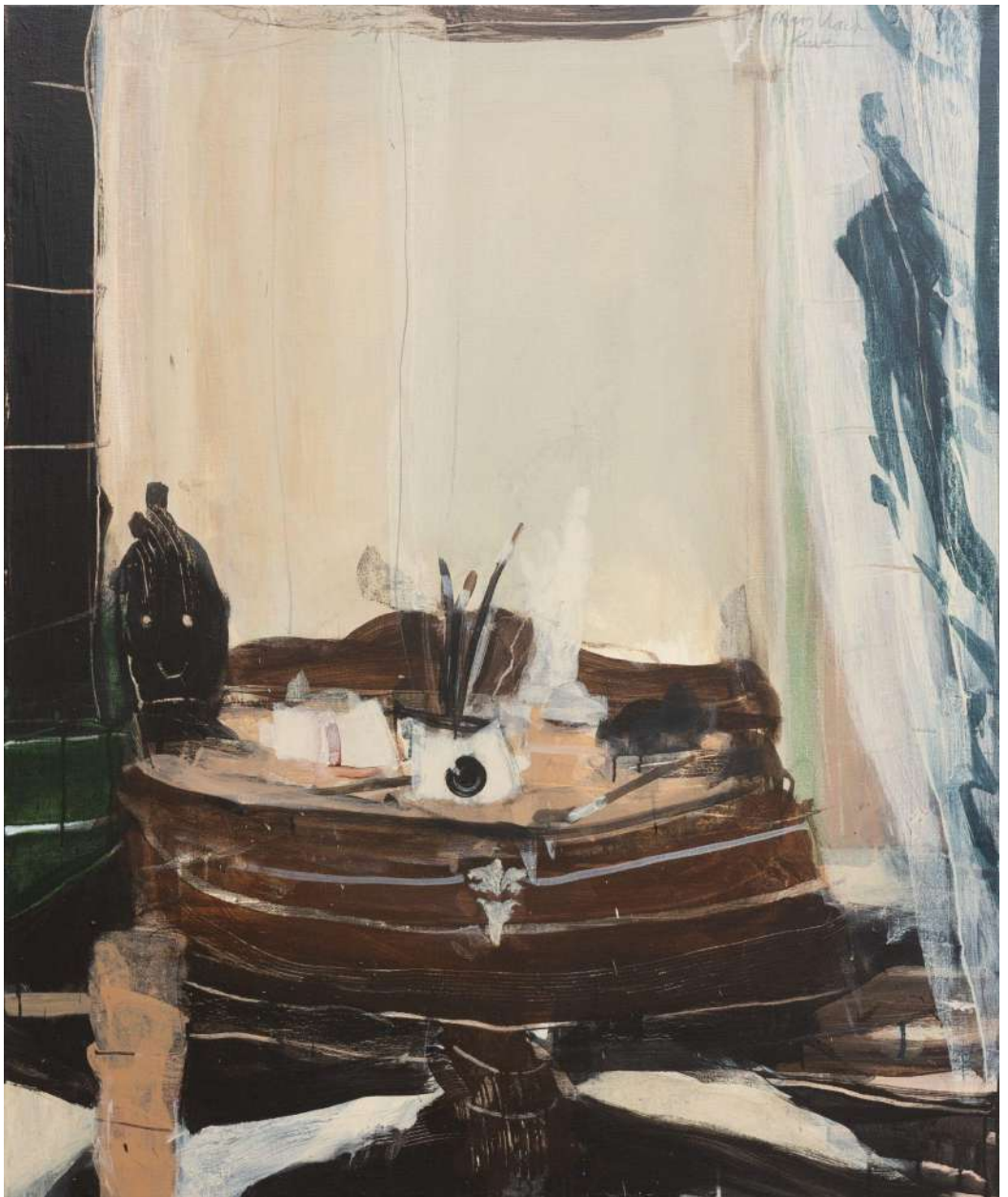
Studio Nocturne, Two Tables, tempera emulsion & oil on linen, 153 x 153 cm, 157 x 157 cm (framed) \$38,000



Three Tables, tempera emulsion & oil on linen (triptych), 3 panels each 153 x 51 cm, 157 x 55 cm (framed) \$38,000



Mask and Moon, tempera emulsion & oil on linen, 77 x 77 cm, 81 x 81 cm (framed) \$18,000



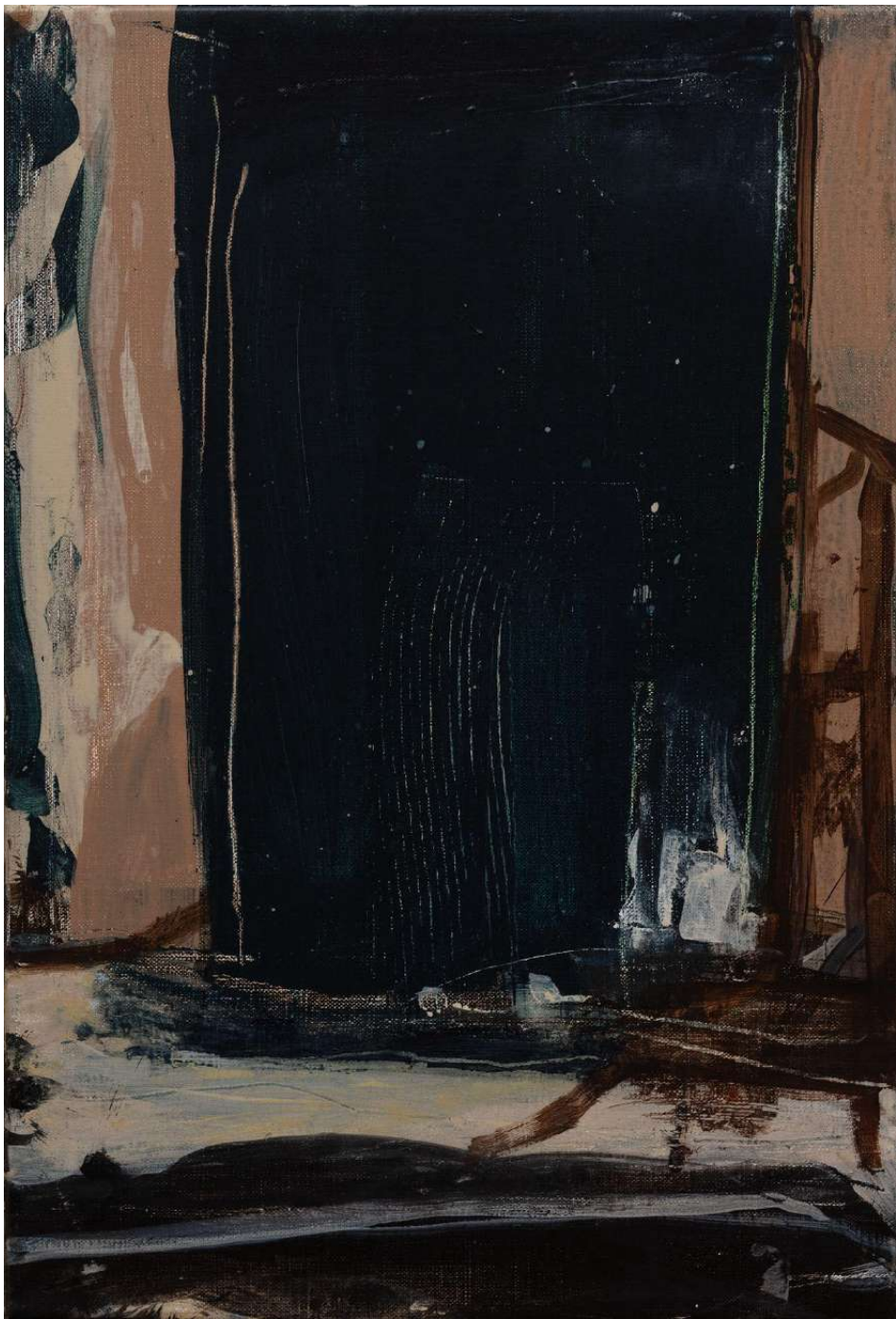
Painter's Table, Mars Black Tube and Kwoma Mask, tempera emulsion & oil on linen, 122 x 112 cm, 126 x 116 cm (framed) \$28,000



Studio Interior, Mendhi Shield and Maquette, tempera emulsion on linen, 77 x 77 cm, 81 x 81 cm (framed) \$18,000



Studio, Blue Curtain and Kwoma Mask, tempera emulsion & oil on linen, 61 x 51 cm, 65 x 55 cm (framed) \$8,000



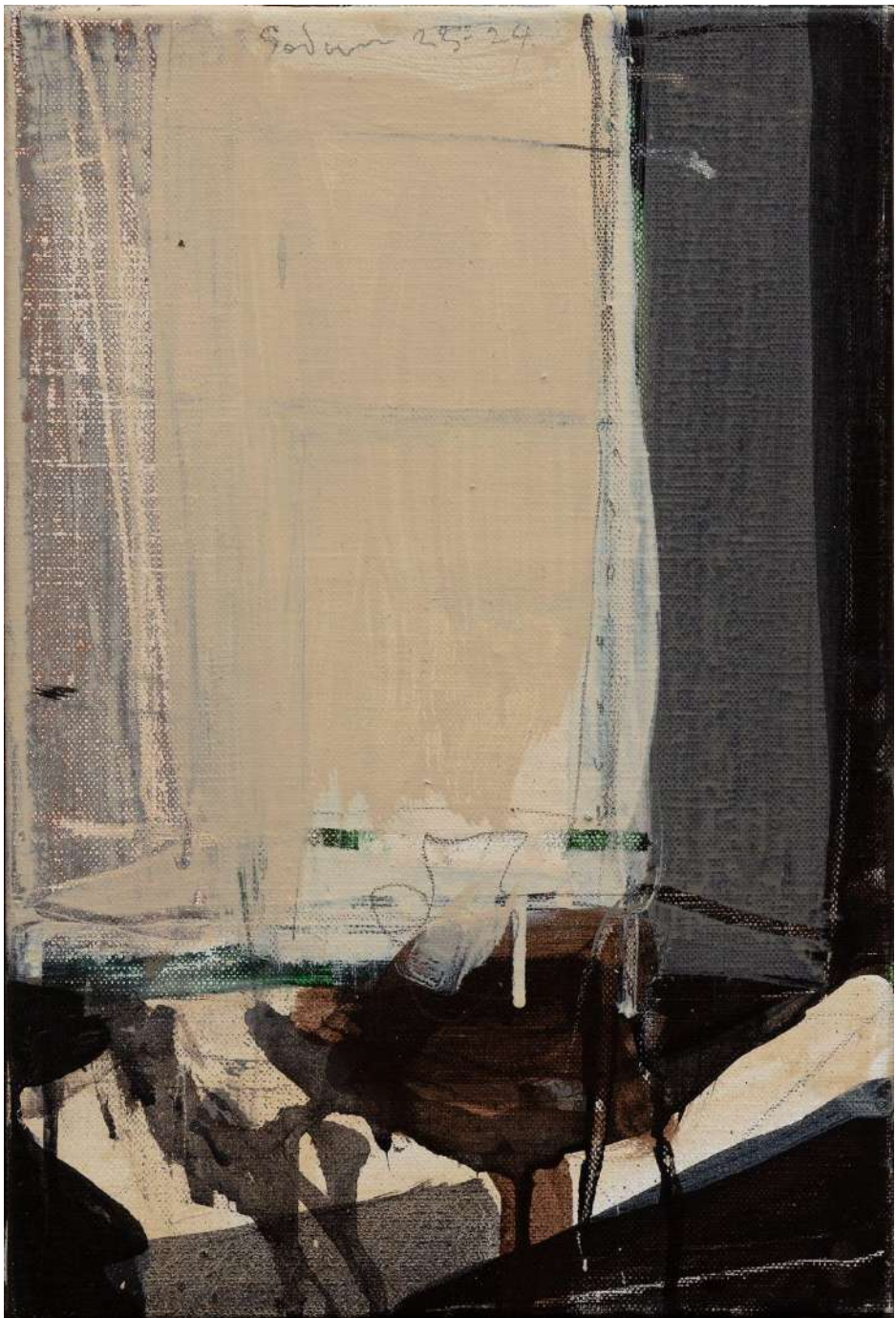
Blue Night I, Studio Nocturne, tempera emulsion & oil on linen, 61 x 41 cm, 65 x 45 cm (framed) \$7,500



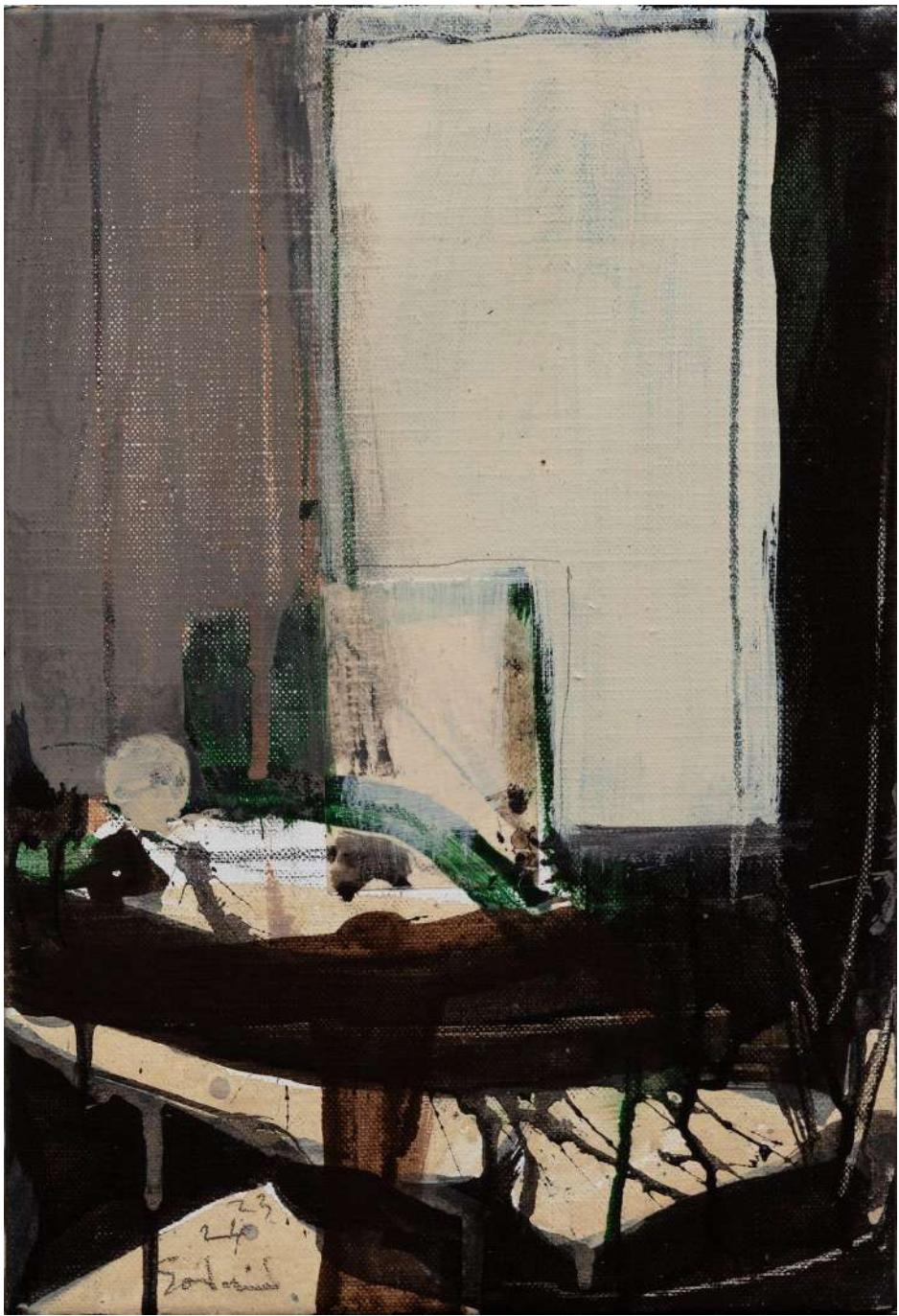
Blue Night, Studio Nocturne, tempera emulsion & oil on linen, 61 x 41 cm, 65 x 45 cm (framed) \$7,500



The Mirror and Green Book, tempera emulsion & graphite on linen, 77 x 77 cm, 81 x 81 cm (framed) \$16,500



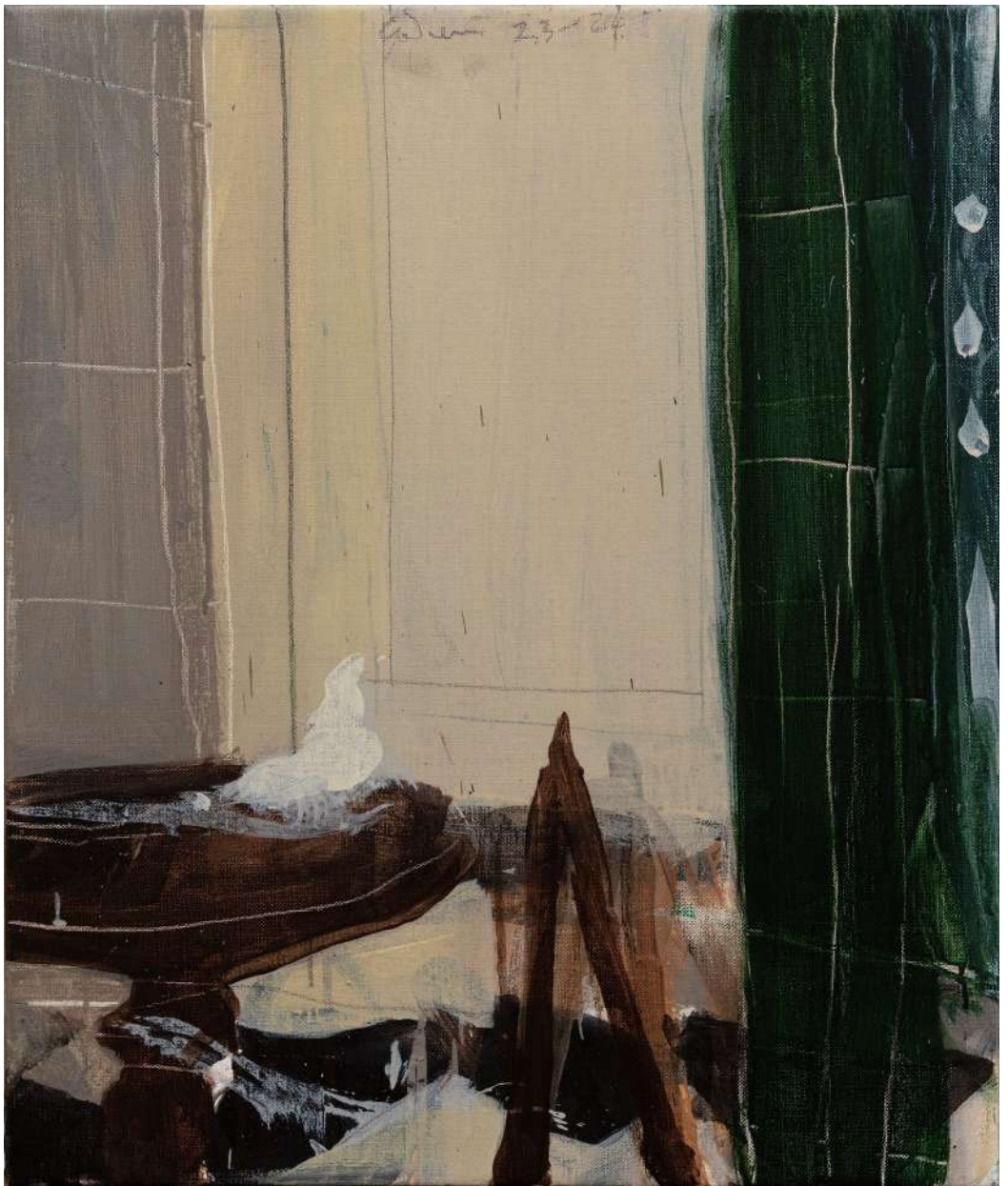
Studio Study, GB's Jug, tempera emulsion & oil on linen, 31 x 21 cm, 35 x 25 cm (framed) \$4,000



Studio Study, Table and Canvas, tempera emulsion & oil on linen, 31 x 21 cm, 35 x 25 cm (framed) \$4,000



Studio Easel and Canvas, tempera emulsion & oil on linen, 31 x 21 cm, 35 x 25 cm (framed) \$4,000



Studio, Green Curtains and Easel, tempera emulsion & oil on linen, 61 x 51 cm, 65 x 55 cm (framed) \$8,000



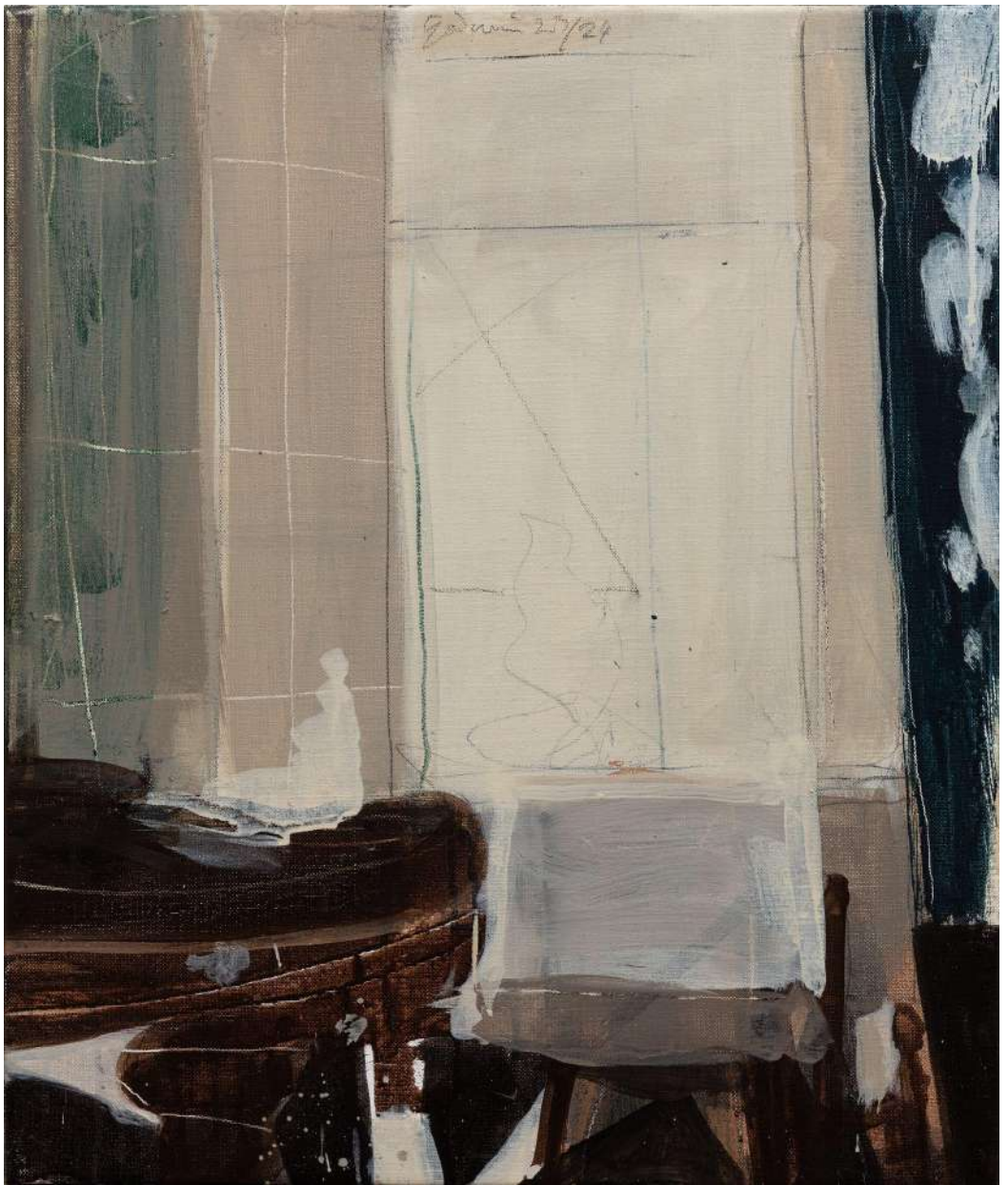
Studio Window, Maquette and Yellow Pillow, tempera emulsion & graphite on linen, 77 x 77 cm, 81 x 81 cm (framed) \$18,000



Studio Window, Blue and White, tempura emulsion & oil on linen, 102 x 122.5 cm, 106 x 126.5 cm (framed) \$26,000



Nocturne: Hokusai Moon and Coffret à Bijoux, tempera emulsion & graphite on linen, 77 x 77 cm, 81 x 81 cm (framed) \$18,000



Studio, Maquette and Canvas, tempera emulsion & oil on linen, 61 x 51 cm, 65 x 55 cm (framed) \$8,000



Night Studio, tempera emulsion & oil on linen, 31 x 61 cm, 35 x 65 cm (framed) \$4,000

DEFIANCE
GALLERY at Mary Place | Est 1995

12 Mary Place Paddington NSW 2021 | 02 9557 8483 | defiancegallery.com | enquiry@defiancegallery.com