

The background is a large-scale abstract painting in shades of grey, black, and white. It features thick, expressive brushstrokes and some vertical drips of paint, creating a textured and somewhat somber atmosphere.

DAVID LÉVY
MODERN & POSTWAR ART

TEFAF
MAASTRICHT 2023

Stand
438/440

Ivan KLIUN

Frantisek KUPKA

Max ERNST

Emil NOLDE

Paul DELVAUX

Henri MATISSE

Baltasar LOBO

Francis PICABIA

Nicolas DE STAËL

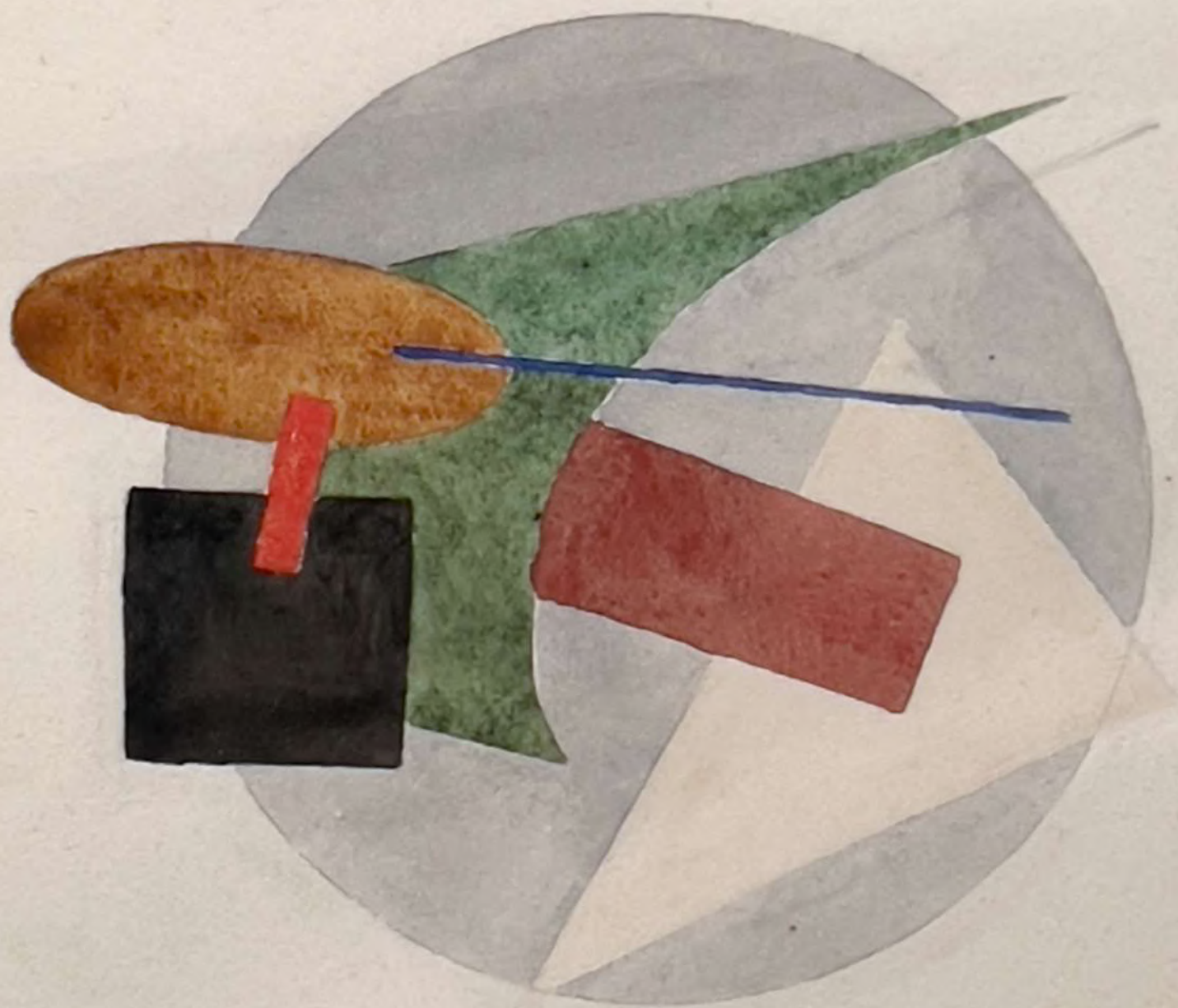
Jean-Paul RIOPELLE

Josef ALBERS

Jean DUBUFFET

Keith HARING

Albert OEHLÉN





Ivan KLIUN (1870 – 1942)

Untitled

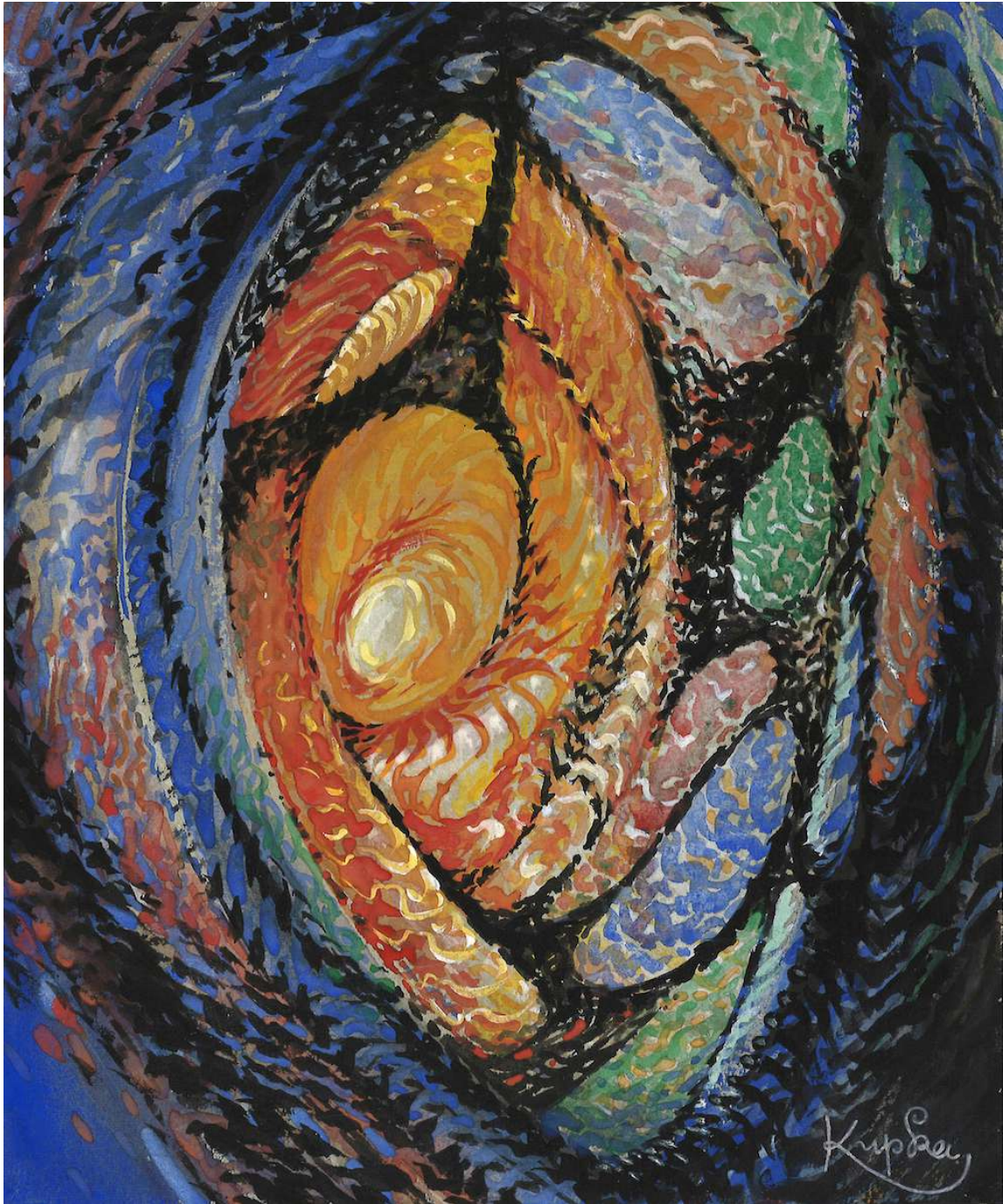
c. 1920

Watercolour and pencil on paper

17,2 x 12 cm (6 ³/₄ x 4 ³/₄ in.)



Kip Saer



Frantisek KUPKA (1871 – 1957)

Étude pour traits, plans et profondeur

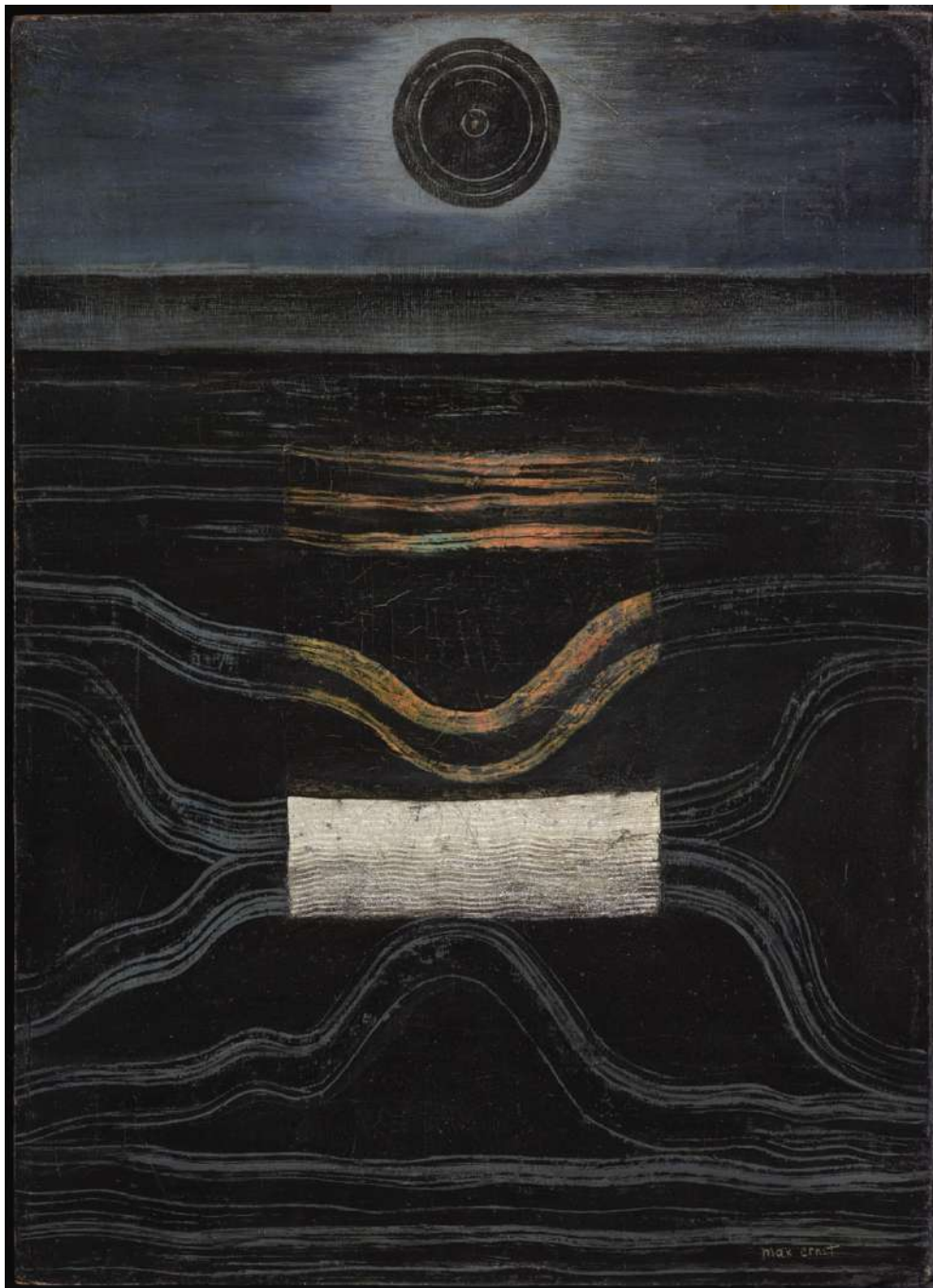
1925

Gouache on paper

Signed lower right: "Kupka"

23 x 19 cm (9 1/8 x 7 1/2 in.)





Max ERNST (1891 – 1976)

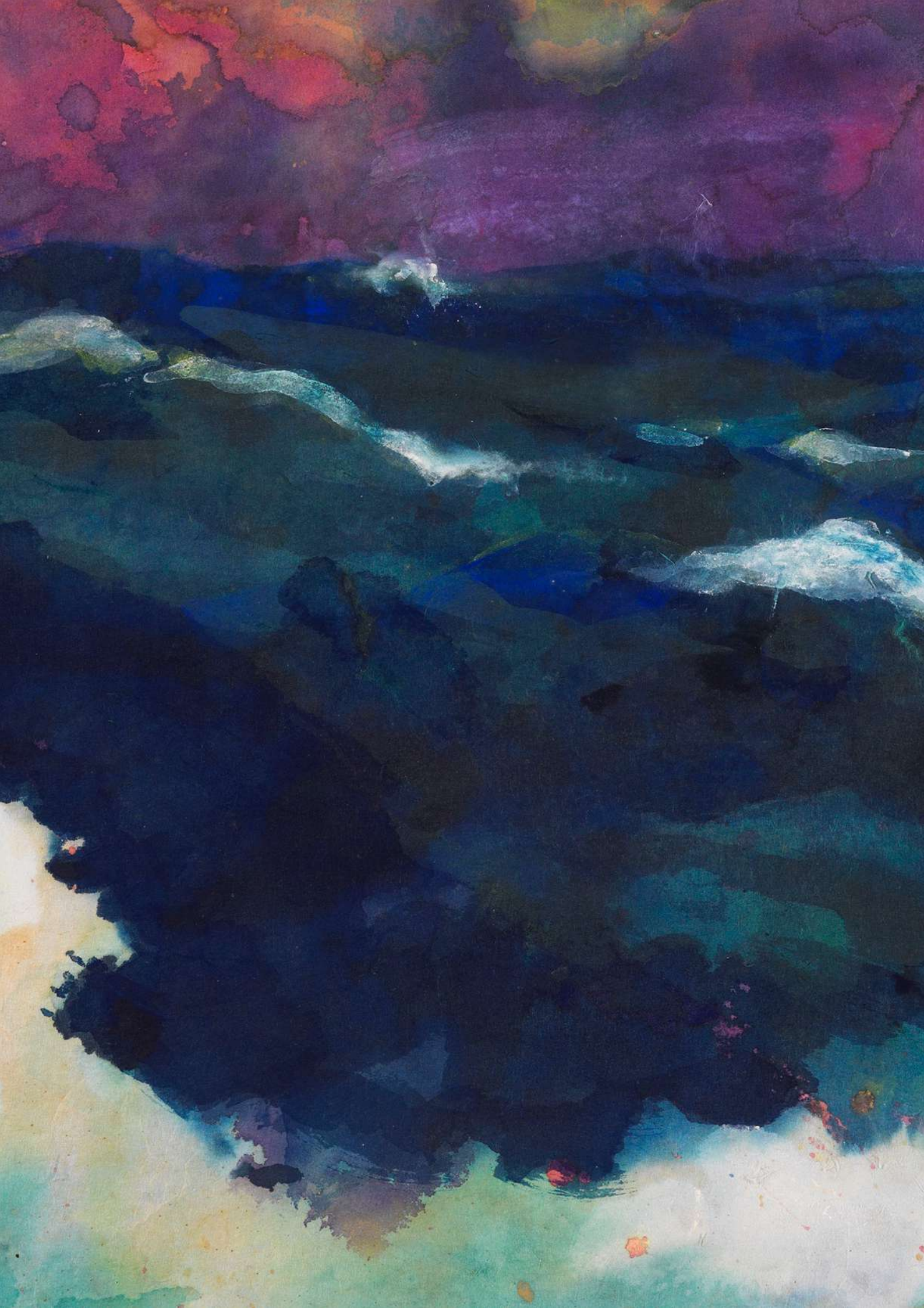
Meer und Mond

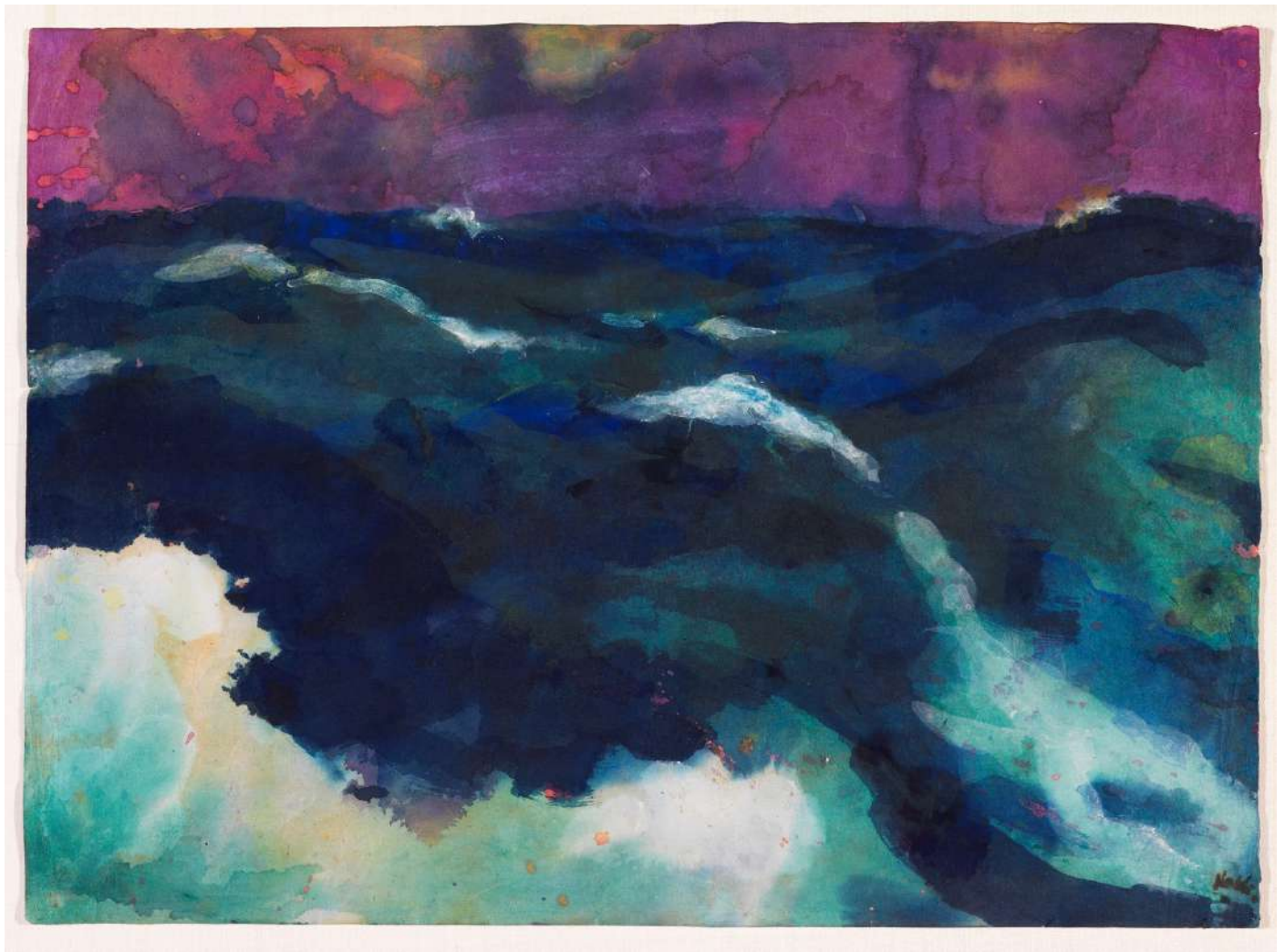
1925

Oil on panel

Signed lower right: "max ernst"

32 x 23 cm (12 9/16 x 9 in.)





Emil NOLDE (1867 – 1956)

Sea under Purple Skies

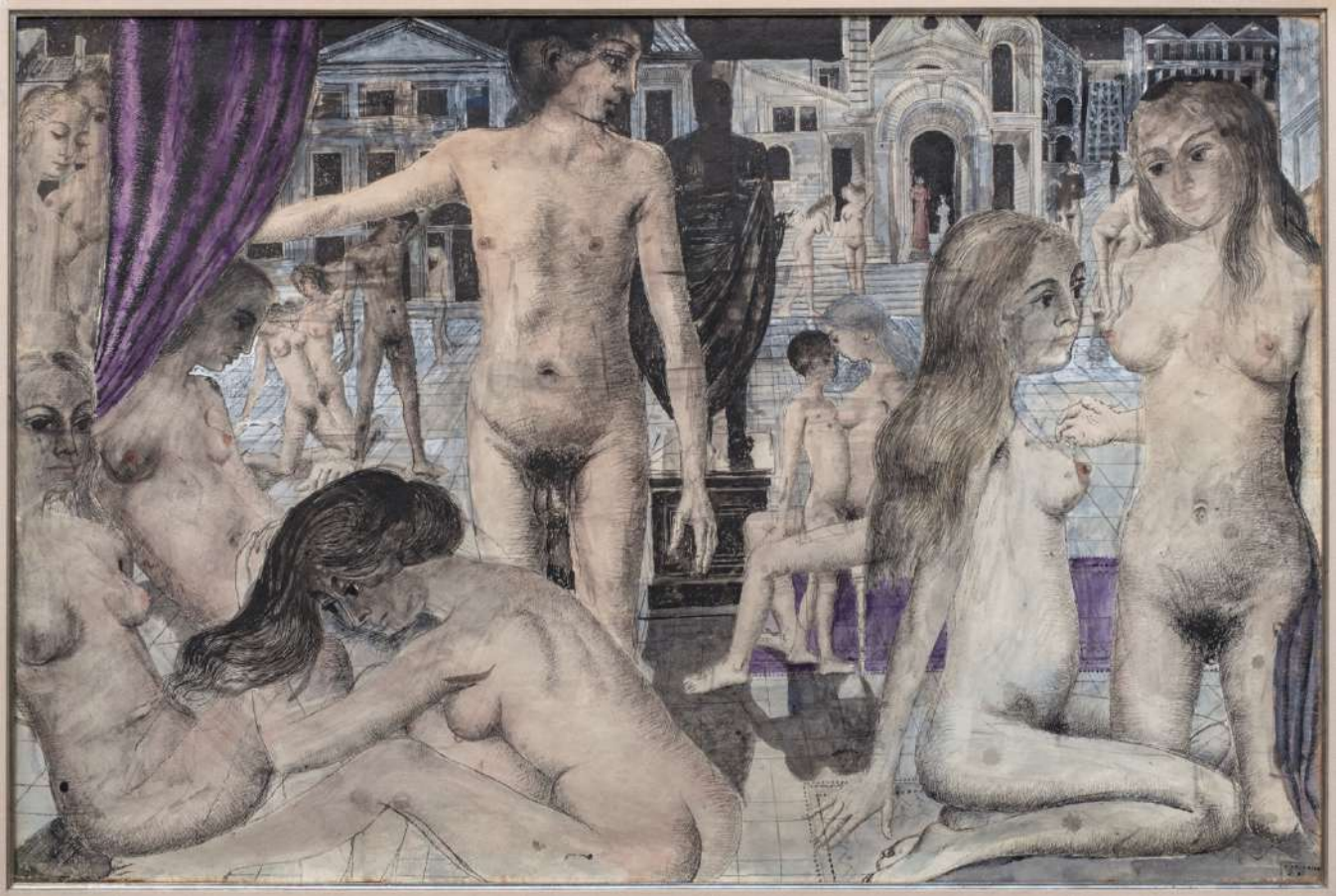
1930-1935

Watercolor and opaque white on Japan paper

Signed lower right: *Nolde*

36,5 x 50,3 cm (14.3 x 19.7 in.)





Paul DELVAUX (1897 – 1994)

Bacchanale or La Statue

1967

Watercolor and India ink wash on paper

Signed and dated lower right "P. Delvaux 2-67"

71 x 106 cm (28 x 41 3/4 in.)





Henri MATISSE (1869 – 1954)

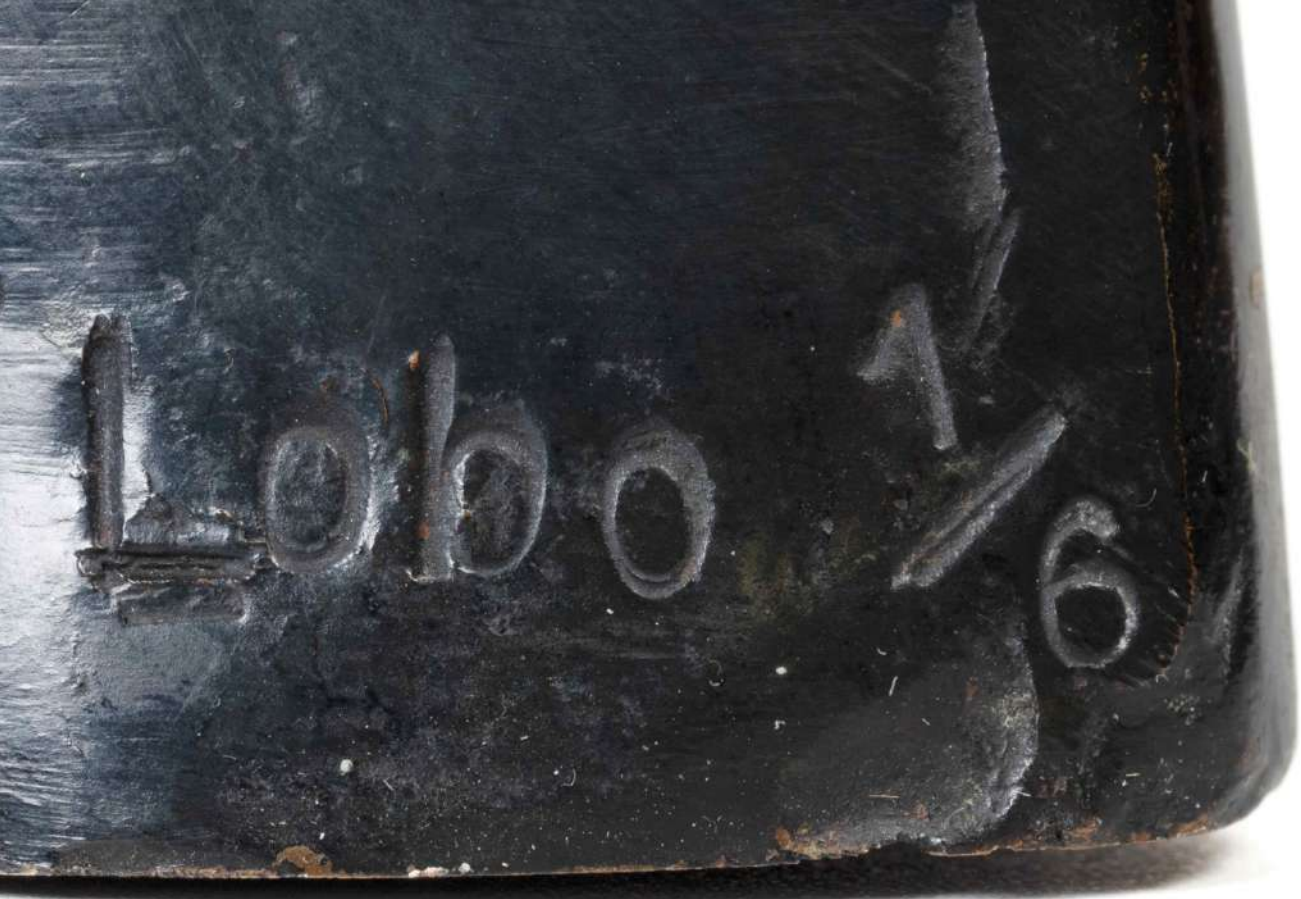
Nu Debut

February 1951

Charcoal on paper (double-sided)

Signed and dated lower left "H. Matisse fev-51"

65,3 x 50,2 cm (25 ³/₄ x 19 ³/₄ in.)





Baltasar LOBO (1910 – 1993)

Contemplation

Conceived in 1956 and cast in bronze in an edition of 6, plus 4 artist's proof and 2 hors commerce, by the foundry Susse Frères, Paris.

This cast was executed in bronze in 1960.

Signed "Lobo" and numbered 1/6

Bronze

28 x 35 x 15 cm (11 x 13 ³/₄ x 5 ³/₄ in.)





Francis PICABIA (1879 – 1953)

Untitled (La Magie du Hasard)

1948

Oil on cardboard mounted on panel

Signed lower left "Francis Picabia" and dated lower right "1948"

104,5 x 74,5 cm (41 1/8 x 29 3/8 in.)





Nicolas DE STAËL

Paysage (Paysage "Fleurs")

1953

Oil on canvas

Signed lower right and signed, titled and dated 1953 on the reverse

Painted in Lagnes

67 x 80 cm (26 3/8 x 31 1/2 in.)





Jean-Paul RIOPELLE (1923 – 2002)

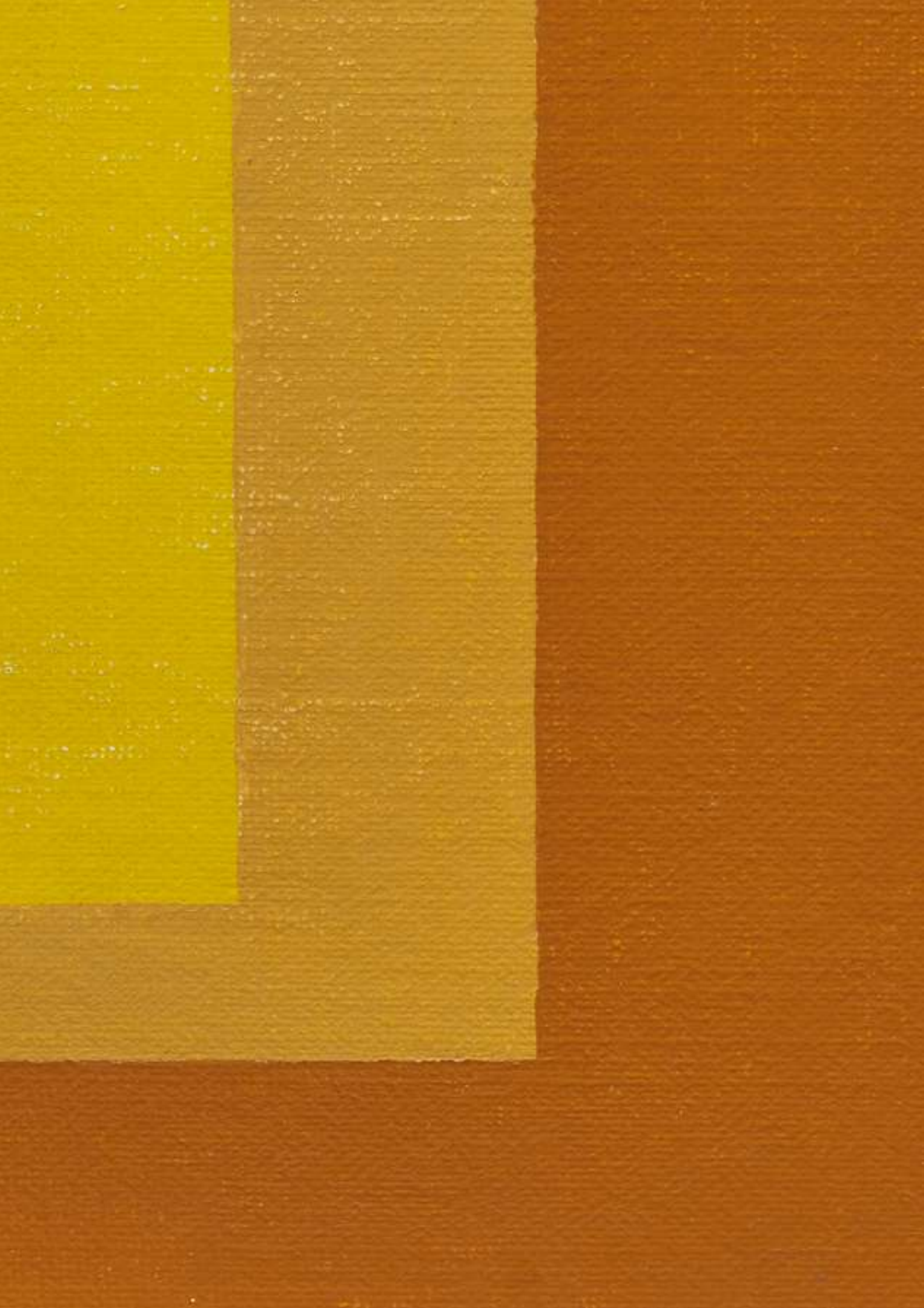
Untitled

1958

Oil on canvas

Signed and dated lower right "riopelle, 58"

73 x 92 cm (28 ³/₄ x 36 ¹/₄ in.)





Josef ALBERS (1888 – 1976)

Homage to the Square: Towards Fall I

1958

Oil on masonite

Signed with the artist's monogram and date "58" lower right. Signed titled and date on the reverse and annotated for colors

60,5 x 60,5 cm (23 7/8 x 23 7/8 in.)



Josef ALBERS (1888 – 1976)

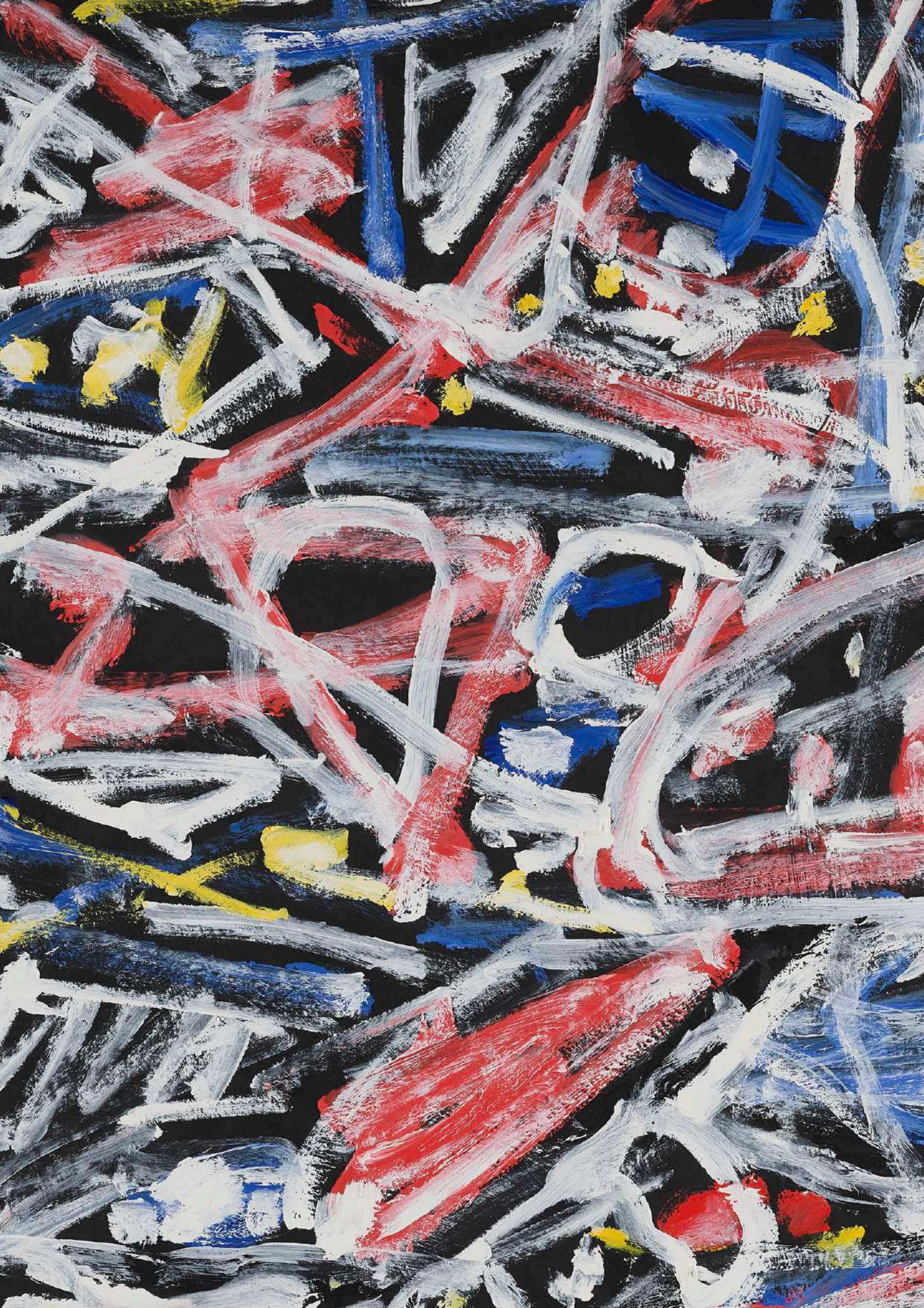
Homage to the Square: Secco

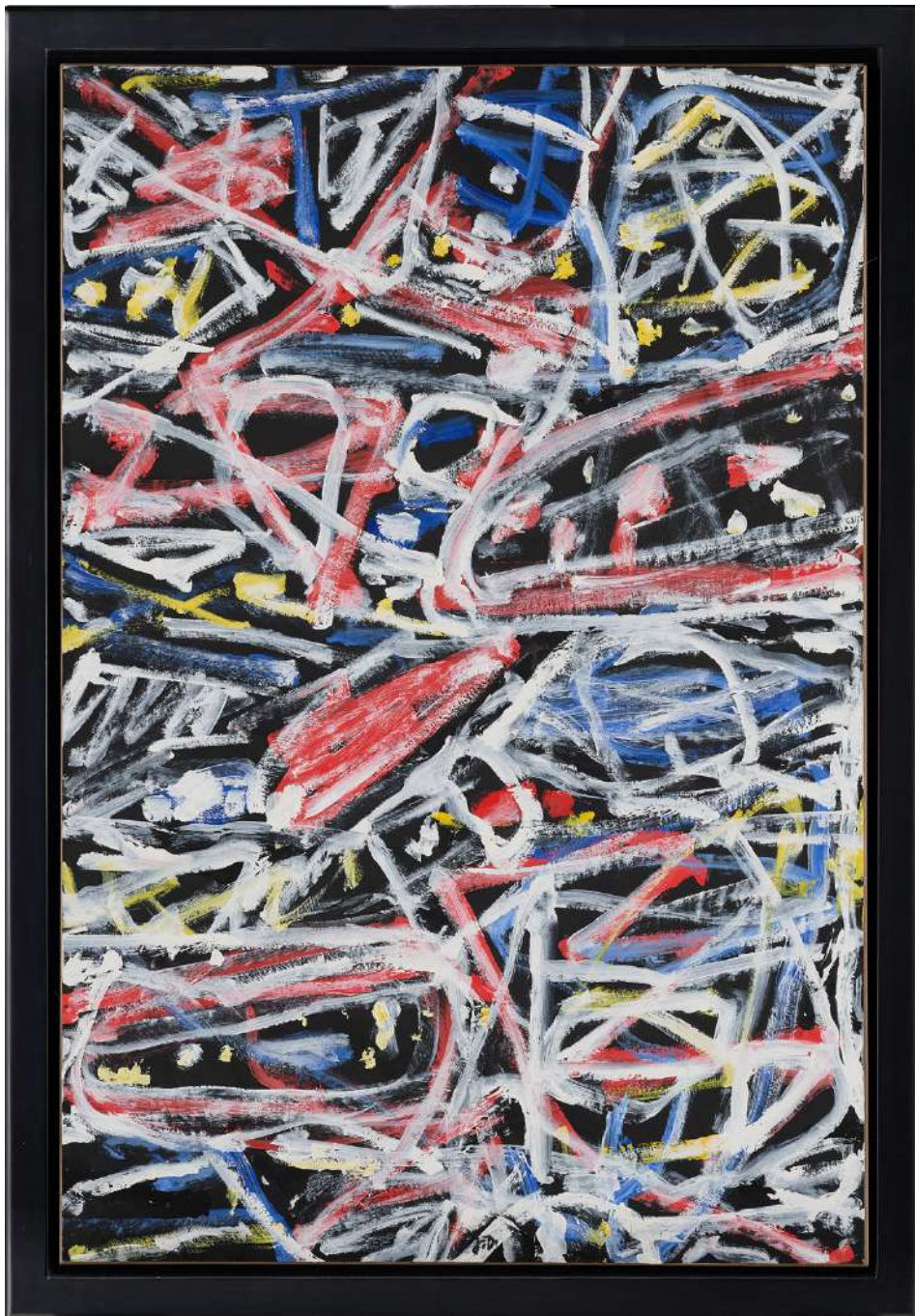
1969

Oil on masonite

Signed with the artist's monogram and date "69" lower right. At the back signed and dated "Albers 1969", titled "Study for Homage to the Square: Secco"

45,7 x 45,7 cm (18 x 18 in.)





Jean DUBUFFET (1901 – 1985)

Sans Titre, end Novembre 1984

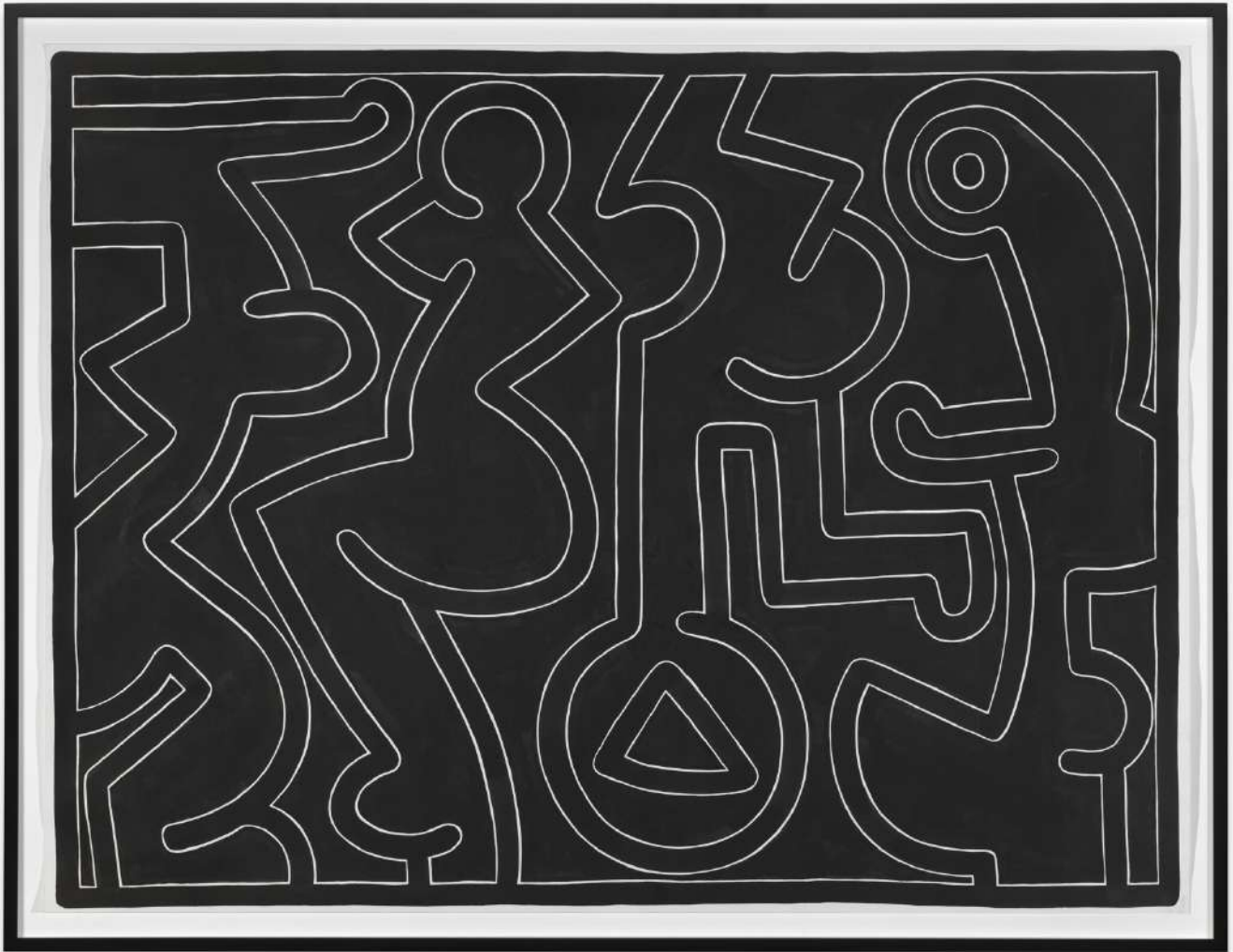
November 1984

Acrylic on paper on canvas

Signed with the artist's initial lower right "J.D"

100 x 67 cm (39 3/8 x 26 3/8 in.)





Keith HARING (1958 – 1990)

Untitled

16 September 1989

Sumi ink on paper

38 x 50 in. - 96.5 x 127 cm (unframed)

41 1/2 x 53 1/2 x 1 3/4 in. - 105.4 x 135.9 x 4.4 cm (framed)





Albert OEHLEN (b. 1954)

Dying Chrysanthemum

1999

Oil on Canvas

Titled "Dying Chrysanthemum" on the reverse

74 ³/₄ x 74 ³/₄ in. – 190 x 190 cm (unframed)

76 ³/₄ x 76 ³/₄ x 2 in. – 195 x 195 x 5 cm (framed)

David Lévy et Associés

info@levy david.com
+32 (0) 475 661225

199 Avenue Albert
1190 Brussels
Belgium

10 Avenue Matignon
75008 Paris
France

www.davidlevy.art