

# CECILIA BRUNSON PROJECTS IN THE VIEWING ROOM

For full details and larger images, please see the end of this document.



**Sheroanawe Hakihiiwe** b. 1971

[View detail](#)

*Hii hisirikipi hi au [Arbol blanco sin hojas / White tree without leaves], 2023*

Acrylic on handmade cotton paper

Framed: 44 x 58.5 cm (17 3/8 x 23 in)

Unframed: 35 x 51 cm (13 3/4 x 20 1/8 in)

(SHH0060)



**Sheroanawe Hakihiiwe** b. 1971

[View detail](#)

*Mapari peno mayo [Otra camino de termitas / Another path of termites], 2023*

Acrylic on handmade cotton paper

Framed: 44 x 58.5 cm (17 3/8 x 23 in)

Unframed: 35 x 51 cm (13 3/4 x 20 1/8 in)

(SHH0054)



**Sheroanawe Hakihiiwe** b. 1971

[View detail](#)

*Tahiapi masiko [Una hoja de palma / A palm leaf], 2023*

Acrylic on handmade cotton paper

Framed: 44 x 58.5 cm (17 3/8 x 23 in)

Unframed: 35 x 51 cm (13 3/4 x 20 1/8 in)

(SHH0056)



**Sheroanawe Hakihiiwe** b. 1971

[View detail](#)

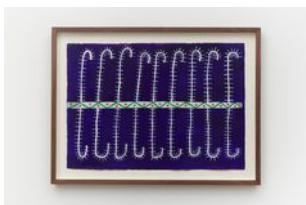
*Wao mo hutha [Cinturón femenino de cadera / Women's hip belt], 2023*

Acrylic on handmade cotton paper

Framed: 44 x 58.5 cm (17 3/8 x 23 in)

Unframed: 35 x 51 cm (13 3/4 x 20 1/8 in)

(SHH0055)



**Sheroanawe Hakihiiwe** b. 1971

[View detail](#)

*Thari au [Escudo blanco / White shield], 2023*

Acrylic on handmade cotton paper

Framed: 44 x 58.5 cm (17 3/8 x 23 in)

Unframed: 35 x 51 cm (13 3/4 x 20 1/8 in)

(SHH0065)



**Sheroanawe Hakihiiwe** b. 1971

[View detail](#)

*Hii yao yao hoko sike riye [Palo cunaguaro y palma verde / Ocelot stick and green palm], 2023*

Acrylic on handmade cotton paper

Framed: 44 x 58.5 cm (17 3/8 x 23 in)

Unframed: 35 x 51 cm (13 3/4 x 20 1/8 in)

(SHH0062)



**Sheroanawe Hakihiiwe** b. 1971

[View detail](#)

*Pei yono uhutipi [Espiritu de camino / Spirit of the path], 2023*

Acrylic on handmade cotton paper

Framed: 44 x 58.5 cm (17 3/8 x 23 in)

Unframed: 35 x 51 cm (13 3/4 x 20 1/8 in)

(SHH0064)



**Paz Errázuriz** b. 1944

[View detail](#)

*Seno Skyring. Magallanes, 1989*

Signed on verso

Digital print on Canson Baryta paper

Unframed: 64 x 44 cm (25 1/4 x 17 3/8 in)

Framed: 70 x 51.5 cm (27 1/2 x 20 1/4 in)

(PAE100)



**Paz Errázuriz** b. 1944

[View detail](#)

*Fresia Alessandri Baker-Jérwar-Asáwe. Rio Perez, Magallanes, 1994*

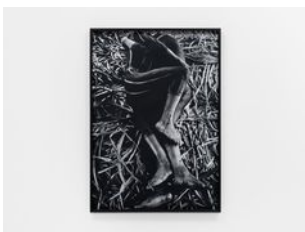
Signed on verso

Digital print on Canson Baryta paper

Unframed: 44 x 64 cm (17 3/8 x 25 1/4 in)

Framed: 51.5 x 70 cm (20 1/4 x 27 1/2 in)

(PAE092)



**Claudia Andujar** b. 1931

[View detail](#)

*Cateté, 1970/2022*

Signed and dated on verso

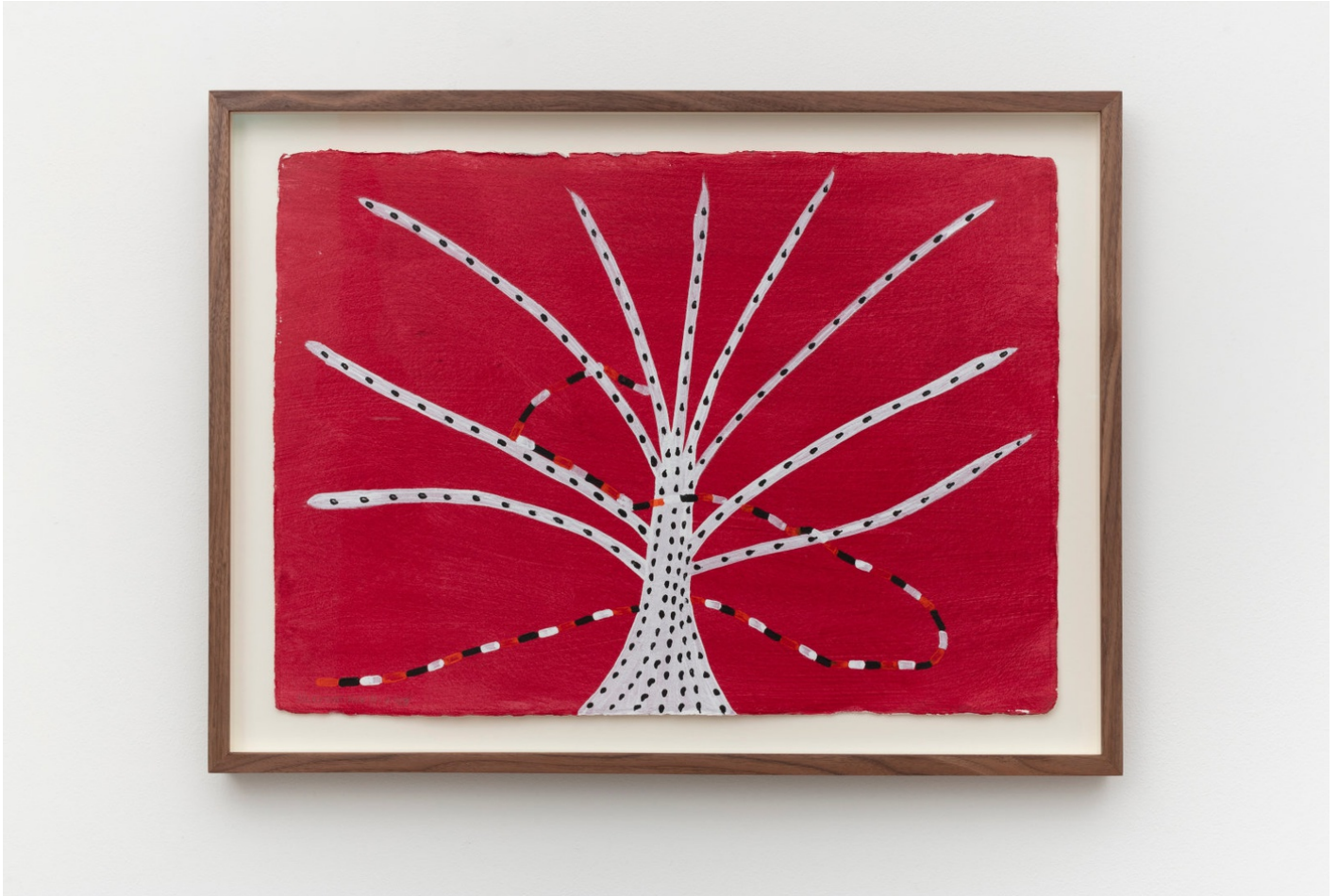
Gelatin silver print on Ilford Multigrade Classic 225g paper with selenium toning

Framed: 101.5 x 70.5 cm (40 x 27 3/4 in)

(CLA001)

SHEROANAWE HAKIHIWE

*Hii hisirikipi hi au [Arbol blanco sin hojas / White tree without leaves], 2023*



Acrylic on handmade cotton paper

Framed: 44 x 58.5 cm (17 3/8 x 23 in)

Unframed: 35 x 51 cm (13 3/4 x 20 1/8 in)

(SHH0060)

Image 1/2

**Provenance**

Direct from artist

**Exhibitions**

*Stepping Softly on the Earth*, Baltic Centre for Contemporary Art, Gateshead, UK (2023-24)



Image 2/2



SHEROANAWE HAKIHIWE

*Mapari peno mayo [Otra camino de termitas / Another path of termites], 2023*



Acrylic on handmade cotton paper

Framed: 44 x 58.5 cm (17 3/8 x 23 in)

Unframed: 35 x 51 cm (13 3/4 x 20 1/8 in)

(SHH0054)

Image 1/2

**Provenance**

Direct from artist

**Exhibitions**

*More than Human*, Design Museum, London, UK (Forthcoming, 2025)

*Stepping Softly on the Earth*, Baltic Centre for Contemporary Art, Gateshead, UK (2023-24)



Image 2/2

SHEROANAWÉ HAKIHIIWE

*Tahiapi masiko [Una hoja de palma / A palm leaf], 2023*



Acrylic on handmade cotton paper

Framed: 44 x 58.5 cm (17 3/8 x 23 in)

Unframed: 35 x 51 cm (13 3/4 x 20 1/8 in)

(SHH0056)

Image 1/2

**Provenance**

Direct from artist

**Exhibitions**

*Stepping Softly on the Earth*, Baltic Centre for Contemporary Art, Gateshead, UK (2023-24)



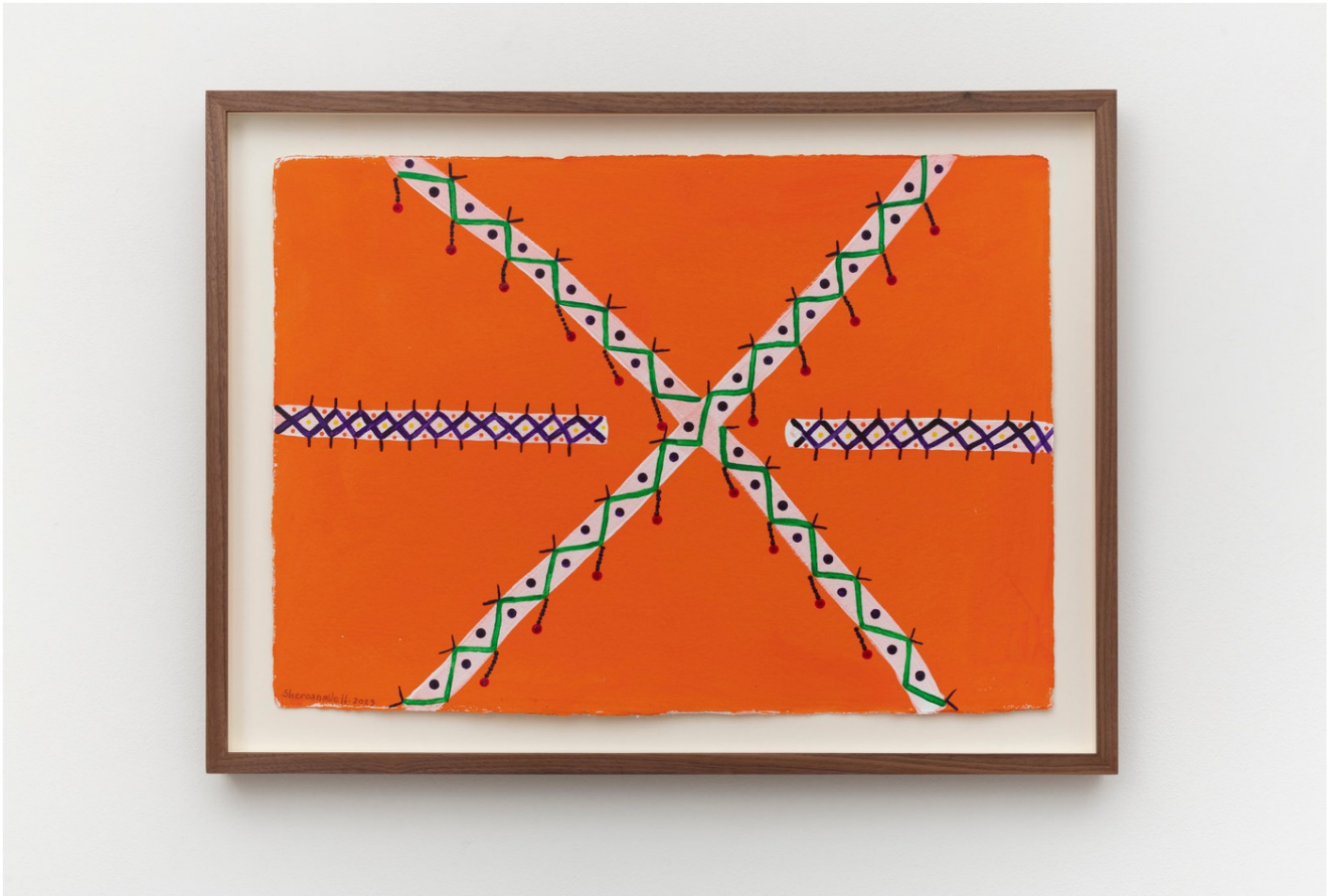


Image 2/2



SHEROANAWE HAKIHIWE

*Wao mo hutha [Cinturón femenino de cadera / Women's hip belt], 2023*



Acrylic on handmade cotton paper

Framed: 44 x 58.5 cm (17 3/8 x 23 in)

Unframed: 35 x 51 cm (13 3/4 x 20 1/8 in)

(SHH0055)

Image 1/2

**Provenance**

Direct from artist

**Exhibitions**

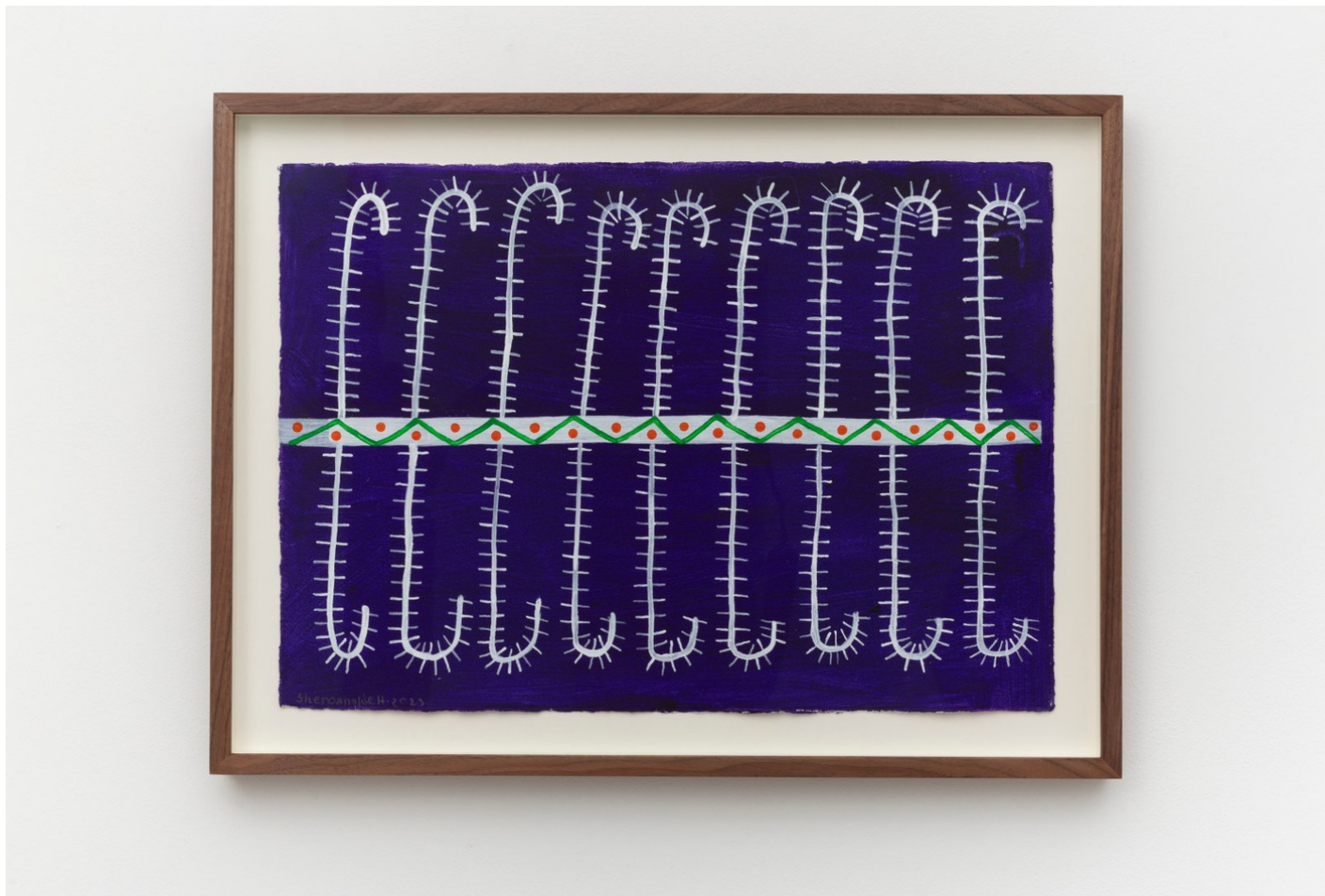
*Stepping Softly on the Earth*, Baltic Centre for Contemporary Art, Gateshead, UK (2023-24)



Image 2/2

SHEROANAWE HAKIHIWE

*Thari au [Escudo blanco / White shield], 2023*



Acrylic on handmade cotton paper

Framed: 44 x 58.5 cm (17 3/8 x 23 in)

Unframed: 35 x 51 cm (13 3/4 x 20 1/8 in)

(SHH0065)

Image 1/2

**Provenance**

Direct from artist

**Exhibitions**

*Stepping Softly on the Earth*, Baltic Centre for Contemporary Art, Gateshead, UK (2023-24)





Image 2/2



SHEROANAWE HAKIHIWE

*Hii yao yao hoko sike riye [Palo cunaguaro y palma verde / Ocelot stick and green palm], 2023*



Acrylic on handmade cotton paper

Framed: 44 x 58.5 cm (17 3/8 x 23 in)

Unframed: 35 x 51 cm (13 3/4 x 20 1/8 in)

(SHH0062)

Image 1/2

**Provenance**

Direct from artist

**Exhibitions**

*More than Human*, Design Museum, London, UK (Forthcoming, 2025)

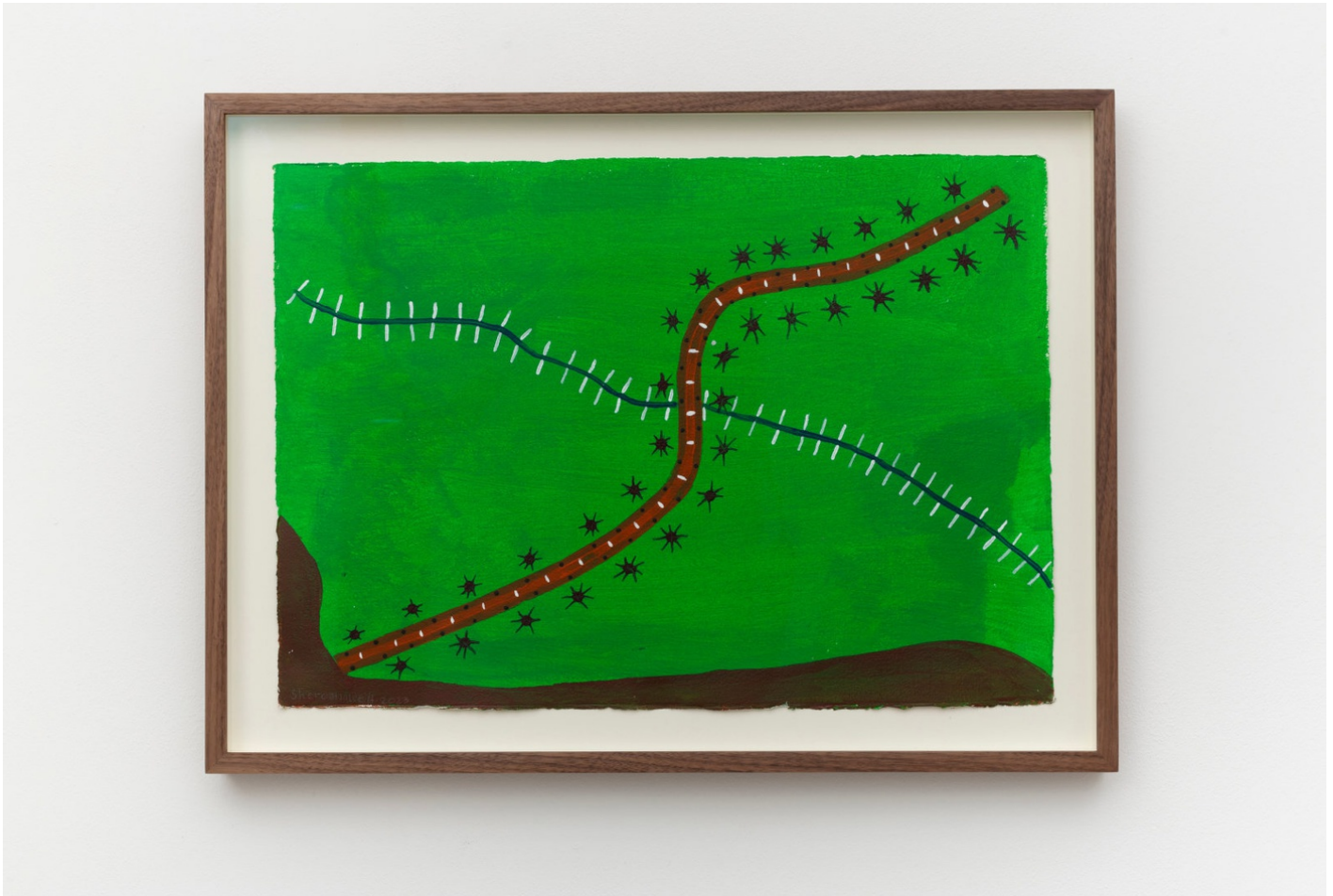
*Stepping Softly on the Earth*, Baltic Centre for Contemporary Art, Gateshead, UK (2023-24)



Image 2/2

SHEROANAWE HAKIHIWE

*Pei yono uhutipi [Espiritu de camino / Spirit of the path], 2023*



Acrylic on handmade cotton paper

Framed: 44 x 58.5 cm (17 3/8 x 23 in)

Unframed: 35 x 51 cm (13 3/4 x 20 1/8 in)

(SHH0064)

Image 1/2

**Provenance**

Direct from artist

**Exhibitions**

*More than Human*, Design Museum, London, UK (Forthcoming, 2025)

*Stepping Softly on the Earth*, Baltic Centre for Contemporary Art, Gateshead, UK (2023-24)





Image 2/2



PAZ ERRÁZURIZ  
*Seno Skyring. Magallanes, 1989*



Signed on verso  
Digital print on Canson Baryta paper  
Unframed: 64 x 44 cm (25 1/4 x 17 3/8 in)  
Framed: 70 x 51.5 cm (27 1/2 x 20 1/4 in)  
(PAE100)

Image 1/3



Image 2/3



Image 3/3

PAZ ERRÁZURIZ

*Fresia Alessandri Baker-Jérwar-Asáwe. Río Perez, Magallanes, 1994*



Signed on verso

Digital print on Canson Baryta paper

Unframed: 44 x 64 cm (17 3/8 x 25 1/4 in)

Framed: 51.5 x 70 cm (20 1/4 x 27 1/2 in)

(PAE092)

Image 1/3

### **Description**

As Chilean art critic Catalina Mena describes:

Many were the journeys Paz Errázuriz made to Patagonia. The first time, it was to seek out Fresia Alessandri, an old woman who had managed to resist the ravages of cold and solitude and who seems to have been the last repository of the Alacaluf cultural memory.

After travelling through turbulent seas beneath terrifying skies, she finally found the old woman sitting atop the haunches of a horse in the middle of a forest. The photographer spoke to Alessandri of her project, but the old woman could not have cared less about the thousands of kilometres



Paz had travelled to arrive at this moment. "No photo", was her response. Errazuriz did not insist; she returned several times over the following three years. They smoked cigarettes together and talked about a little of everything, until finally Paz gained her elusive trust.



Image 2/3



Image 3/3



CLAUDIA ANDUJAR  
*Cateté*, 1970/2022



Signed and dated on verso

Gelatin silver print on Ilford Multigrade Classic 225g paper with selenium toning

Framed: 101.5 x 70.5 cm (40 x 27 3/4 in)

(CLA001)

#### **Exhibitions**

*Géométries Sud*, Fondation Cartier pour l'art contemporaine, Paris, France (2018-19)

*A Vulnerabilidade do Ser*, Pinacoteca do Estado, São Paulo, Brazil (2005)

#### **Literature**

'Em Busca do Outro,' Teté Martinho, Revista Pororoca no.3, 2009, p. 30