

HUXLEY-PARLOUR

PICASSO | CERAMICS

Click on each image to see multiple views

For full details and larger images, please see the end of this document.



Pablo Picasso 1881 - 1973

Goat's Head (Tête de Chèvre de Profil) [A.R. 151], 1952

Ceramic dish

Inscribed 'Edition Picasso' and stamped with 'Empreinte

Originale de Picasso / Madoura Plein feu' stamps on reverse

White earthenware clay, decoration in engobes under partial
brushed glaze, patinated ground

Ivory, blue, yellow, black

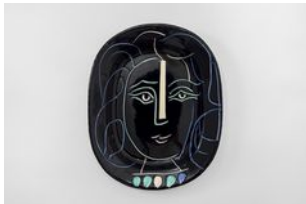
Diameter: 16 inches

Executed in an edition of 100

(BHC4074)

£ 28,000.00

[View detail](#)



Pablo Picasso 1881 - 1973

Woman's Face (Visage de Femme) [A.R. 220], 1953

Rectangular ceramic dish

Inscribed 'Edition Picasso' and 'Exemplaire Editeur' and

stamped 'Madoura Plain Feu / Edition Picasso' on reverse

White earthenware clay, partially engraved, with coloured
engobe and glaze

Blue, green, white, black

Length: 15 1/4 inches

Executed in an edition of 400

(BHC4078)

£ 70,000.00

[View detail](#)



Pablo Picasso

[View detail](#)

Face no. 111 (Visage no. 111) [A.R. 476], 1963

Round ceramic plate

Inscribed with title and 'Edition Picasso' and 'Madoura' and numbered 115/500 on reverse

White earthenware clay, decoration in engobes and enamel under glaze

Black, green, blue, red

Diameter 9 3/4 inches

Executed in an edition of 500

(BHC4072)

£ 18,000.00



Pablo Picasso 1881 - 1973

[View detail](#)

Vase with Two High Handles (Vase Deux Anses Hautes) [A.R. 141], 1952

Turned vase

Stamped 'Edition Picasso / Madoura' on base

White earthenware clay, engobe decoration, engraved under partial brushed glazed

Black, white, grey

Height: 15 inches

Executed in an edition of 400

(BHC4063)



Pablo Picasso 1881 - 1973

[View detail](#)

Owl (Hibou) [A.R. 253], 1954

Turned pitcher

Inscribed 'Edition Picasso' and 'Madoura' and stamped 'Edition Picasso / Madoura' on base

White earthenware clay, oxide decoration on white enamel

Blue

Height 9 1/2 inches

Executed in an edition of 500

(HM0345)

£ 15,500.00



Pablo Picasso 1881 - 1973

[View detail](#)

Wood-Owl (Chouette) [A.R. 543], 1968

Turned vase

Numbered and stamped 'Madoura Plain Feu / Edition Picasso' on base

White earthenware clay, decoration in engobes under partial brushed glaze

Red, green, white, black

Height: 11 inches

Executed in an edition of 500

(BHC4079)

£ 40,000.00



Pablo Picasso 1881 - 1973

[View detail](#)

Face Tankard (Chope Visage) [A.R. 434], 1959

Turned pitcher

Inscribed 'Edition Picasso' and 'Madoura', numbered 218/300 and stamped 'Edition Picasso / Madoura Plein Feu' on base

White earthenware clay, decoration in oxide on white enamel

Brown, blue

Height: 8 1/2 inches

Executed in an edition of 300

(BHC4077)

£ 14,500.00



Pablo Picasso (1881 - 1973)

[View detail](#)

Woman (Femme) [A.R. 301], 1955

Turned pitcher

Inscribed 'Edition Picasso', numbered '122/200' and stamped with 'Edition Picasso / Madoura' on base

White earthenware clay, decoration in engobes and engraved

Blue, grey, black

Height: 11 1/2 inches

Executed in an edition of 200

(HM0342)

£ 25,000.00



Pablo Picasso 1881 - 1973

[View detail](#)

Owl (Hibou) [A.R. 252], 1954

Turned pitcher

Stamped with 'Empreinte originale de Picasso / 'Madoura Plein Feu' on base

White earthenware clay, oxide decoration on white enamel

Blue

Height: 5 1/4 inches

Executed in an edition of 200

(BHC4069)

£ 10,500.00



Pablo Picasso 1881 - 1973

[View detail](#)

Vallauris [A.R. 179], 1953

Round plate

Stamped with 'Empreinte originale de Picasso / Madoura Plein Feu' on reverse

White earthenware clay, engraving accentuated with oxidised paraffin under white enamel

Brown, green

Diameter: 8 inches

Executed in an edition of 400

(BHC4068)

£ 8,500.00



Pablo Picasso

[View detail](#)

Grey Face (Visage Gris) [A.R. 206], 1953

Rectangular dish

Inscribed 'Edition Picasso' and 'Madoura' and stamped 'Edition Picasso / Madoura Plein Feu' on reverse

White earthenware clay, decoration in engobes, partially engraved under a brushed glaze

Green, white, black

Length: 14 3/4 inches

Executed in an edition of 500

(HM0346)

£ 30,000.00



Pablo Picasso 1881 - 1973

[View detail](#)

Small Owl Jug (Petit Pichet de Hibou) [A.R.293], 1955

Turned Jug

Inscribed 'Edition Picasso' and 'Madoura' and stamped with

'Edition Picasso / Madoura Plein Feu' on base

White earthenware clay, decoration in oxides and engraved by knife on white enamel

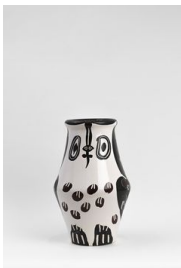
Black, blue, brown

Height: 10 1/4 inches

Executed in an edition of 500

(BHC4066)

£ 27,500.00



Pablo Picasso 1881 - 1973

[View detail](#)

Black and Brown Owl (Hibou Marron Noir) [A.R. 123], 1951

Turned vase

Inscribed 'Edition Picasso' and 'Madoura' and stamped 'Edition

Picasso / Madoura' on base

White earthenware clay, decoration in oxides, knife engraved on white enamel

Brown, black

Height: 11 1/2 inches

Executed in an edition of 300

(HM0344)

£ 17,500.00



Pablo Picasso 1881 - 1973

[View detail](#)

Jacqueline's Profile (Profil de Jacqueline) [A.R. 309], 1956

Round dish

Inscribed 'Madoura Plein feu empreinte originale de Picasso' on reverse

White earthenware clay

White

Diameter: 16 1/4 inches

Executed in an edition of 100

(BHC4067)

£ 32,000.00



Pablo Picasso 1881 - 1973

[View detail](#)

Tormented Faun's Face (Visage de Faune Tourmenté) [A.R. 320], 1956

Round dish

Inscribed with 'Madoura plein feu empreinte originale de Picasso' and numbered 66/200 on reverse

White earthenware clay, decoration in engobe, enamel, glaze

Brown, green, ivory

Diameter: 16 1/2 inches

Executed in an edition of 200

(BHC4065)

£ 12,500.00



Pablo Picasso 1881 - 1973

[View detail](#)

Dishevelled Woman (Femme Échevelée) [A.R. 510], 1963

Round plate

Stamped with 'Empreinte Originale de Picasso / Madoura Plein feu' on reverse

White earthenware clay

White

Diameter: 10 3/4 inches

Executed in an edition of 100

(BHC4073)

£ 10,500.00



Pablo Picasso 1881 - 1973

[View detail](#)

Man's Face (Visage d'homme) [A.R. 287], 1955

Rectangular dish

Inscribed with 'Edition Picasso', 'Madoura', numbered and stamped 'Madoura Plain Feu / Edition Picasso' on reverse

White earthenware clay, knife engraved decoration under brushed glaze

White, ivory

Width: 12 1/2 inches

Length: 15 1/4

Executed in an edition of 350

(BHC4070)

£ 22,500.00



Pablo Picasso 1881 - 1973

[View detail](#)

Bull's Head (Tête de Taureau) [A.R. 232], 1954

Ceramic bowl

Stamped 'Madoura Plain Feu / Edition Picasso' on base

White earthenware clay with coloured engobe and glaze

Green, white, pink patina

Diameter: 5 3/4 inches

Executed in an edition of 100

(BHC4076)

£ 9,500.00

PABLO PICASSO

Goat's Head (Tête de Chèvre de Profil) [A.R. 151], 1952



Ceramic dish

Inscribed 'Edition Picasso' and stamped with 'Empreinte Originale de Picasso / Madoura Plein feu' stamps on reverse

White earthenware clay, decoration in engobes under partial brushed glaze, patinated ground

Ivory, blue, yellow, black

Diameter: 16 inches

Executed in an edition of 100

(BHC4074)

£ 28,000.00

Image 1/2



Image 2/2

PABLO PICASSO

Woman's Face (Visage de Femme) [A.R. 220], 1953



Rectangular ceramic dish

Inscribed 'Edition Picasso' and 'Exemplaire Editeur' and stamped 'Madoura Plain Feu / Edition Picasso' on reverse

White earthenware clay, partially engraved, with coloured engobe and glaze

Blue, green, white, black

Length: 15 1/4 inches

Executed in an edition of 400

(BHC4078)

£ 70,000.00

Image 1/2



Image 2/2

PABLO PICASSO

Face no. 111 (Visage no. 111) [A.R. 476], 1963



Round ceramic plate

Inscribed with title and 'Edition Picasso' and 'Madoura' and numbered 115/500 on reverse

White earthenware clay, decoration in engobes and enamel under glaze

Black, green, blue, red

Diameter 9 3/4 inches

Executed in an edition of 500

(BHC4072)

£ 18,000.00

Image 1/2



Image 2/2

PABLO PICASSO

Vase with Two High Handles (Vase Deux Anses Hautes) [A.R. 141], 1952



Turned vase

Stamped 'Edition Picasso / Madoura' on base

White earthenware clay, engobe decoration, engraved under partial brushed glazed

Black, white, grey

Height: 15 inches

Executed in an edition of 400

(BHC4063)

Image 1/6



Image 2/6



Image 3/6



Image 4/6



Image 5/6



Image 6/6

PABLO PICASSO
Owl (Hibou) [A.R. 253], 1954



Turned pitcher
Inscribed 'Edition Picasso' and 'Madoura' and stamped 'Edition Picasso / Madoura' on base
White earthenware clay, oxide decoration on white enamel
Blue
Height 9 1/2 inches
Executed in an edition of 500
(HM0345)

£ 15,500.00

Image 1/4



Image 2/4



Image 3/4



Image 4/4

PABLO PICASSO
Wood-Owl (Chouette) [A.R. 543], 1968



Turned vase
Numbered and stamped 'Madoura Plain Feu / Edition Picasso' on base
White earthenware clay, decoration in engobes under partial brushed glaze
Red, green, white, black
Height: 11 inches
Executed in an edition of 500
(BHC4079)

£ 40,000.00

Image 1/3



Image 2/3



Image 3/3

PABLO PICASSO

Face Tankard (Chope Visage) [A.R. 434], 1959



Turned pitcher

Inscribed 'Edition Picasso' and 'Madoura', numbered 218/300 and stamped 'Edition Picasso / Madoura Plein Feu' on base

White earthenware clay, decoration in oxide on white enamel

Brown, blue

Height: 8 1/2 inches

Executed in an edition of 300

(BHC4077)

£ 14,500.00

Image 1/5



Image 2/5



Image 3/5



Image 4/5



Image 5/5

PABLO PICASSO
Woman (Femme) [A.R. 301], 1955



Turned pitcher

Inscribed 'Edition Picasso', numbered '122/200' and stamped with 'Edition Picasso / Madoura' on base
White earthenware clay, decoration in engobes and engraved

Blue, grey, black

Height: 11 1/2 inches

Executed in an edition of 200

(HM0342)

£ 25,000.00

Image 1/5



Image 2/5



Image 3/5



Image 4/5



Image 5/5

PABLO PICASSO
Owl (Hibou) [A.R. 252], 1954



Turned pitcher
Stamped with 'Empreinte originale de Picasso / 'Madoura Plein Feu' on base
White earthenware clay, oxide decoration on white enamel
Blue
Height: 5 1/4 inches
Executed in an edition of 200
(BHC4069)

£ 10,500.00

Image 1/4



Image 2/4



Image 3/4



Image 4/4

PABLO PICASSO
Vallauris [A.R. 179], 1953



Round plate
Stamped with 'Empreinte originale de Picasso / Madoura Plein Feu' on reverse
White earthenware clay, engraving accentuated with oxidised paraffin under white enamel
Brown, green
Diameter: 8 inches
Executed in an edition of 400
(BHC4068)

£ 8,500.00

Image 1/2



Image 2/2

PABLO PICASSO

Grey Face (Visage Gris) [A.R. 206], 1953



Rectangular dish

Inscribed 'Edition Picasso' and 'Madoura' and stamped 'Edition Picasso / Madoura Plein Feu' on reverse

White earthenware clay, decoration in engobes, partially engraved under a brushed glaze

Green, white, black

Length: 14 3/4 inches

Executed in an edition of 500

(HM0346)

£ 30,000.00

Image 1/2



Image 2/2

PABLO PICASSO

Small Owl Jug (Petit Pichet de Hibou) [A.R.293], 1955



Turned Jug

Inscribed 'Edition Picasso' and 'Madoura' and stamped with 'Edition Picasso / Madoura Plein Feu' on base

White earthenware clay, decoration in oxides and engraved by knife on white enamel

Black, blue, brown

Height: 10 1/4 inches

Executed in an edition of 500

(BHC4066)

£ 27,500.00

Image 1/4



Image 2/4



Image 3/4



Image 4/4

PABLO PICASSO

Black and Brown Owl (Hibou Marron Noir) [A.R. 123], 1951



Turned vase

Inscribed 'Edition Picasso' and 'Madoura' and stamped 'Edition Picasso / Madoura' on base

White earthenware clay, decoration in oxides, knife engraved on white enamel

Brown, black

Height: 11 1/2 inches

Executed in an edition of 300

(HM0344)

£ 17,500.00

Image 1/4



Image 2/4



Image 3/4



Image 4/4

PABLO PICASSO

Jacqueline's Profile (Profil de Jacqueline) [A.R. 309], 1956



Round dish

Inscribed 'Madoura Plein feu empreinte originale de Picasso' on reverse

White earthenware clay

White

Diameter: 16 1/4 inches

Executed in an edition of 100

(BHC4067)

£ 32,000.00

Image 1/2



Image 2/2

PABLO PICASSO

Tormented Faun's Face (Visage de Faune Tourmenté) [A.R. 320], 1956



Round dish

Inscribed with 'Madoura plein feu empreinte originale de Picasso' and numbered 66/200 on reverse

White earthenware clay, decoration in engobe, enamel, glaze

Brown, green, ivory

Diameter: 16 1/2 inches

Executed in an edition of 200

(BHC4065)

£ 12,500.00

Image 1/2



Image 2/2

PABLO PICASSO

Dishevelled Woman (Femme Échevelée) [A.R. 510], 1963



Round plate

Stamped with 'Empreinte Originale de Picasso / Madoura Plein feu' on reverse

White earthenware clay

White

Diameter: 10 3/4 inches

Executed in an edition of 100

(BHC4073)

£ 10,500.00

Image 1/2



Image 2/2

PABLO PICASSO

Man's Face (Visage d'homme) [A.R. 287], 1955



Rectangular dish

Inscribed with 'Edition Picasso', 'Madoura', numbered and stamped 'Madoura Plain Feu / Edition Picasso' on reverse

White earthenware clay, knife engraved decoration under brushed glaze

White, ivory

Width: 12 1/2 inches

Length: 15 1/4

Executed in an edition of 350

(BHC4070)

£ 22,500.00

Image 1/2



Image 2/2

PABLO PICASSO

Bull's Head (Tête de Taureau) [A.R. 232], 1954



Ceramic bowl

Stamped 'Madoura Plain Feu / Edition Picasso' on base

White earthenware clay with coloured engobe and glaze

Green, white, pink patina

Diameter: 5 3/4 inches

Executed in an edition of 100

(BHC4076)

£ 9,500.00

Image 1/2



Image 2/2